

# Creating jobs

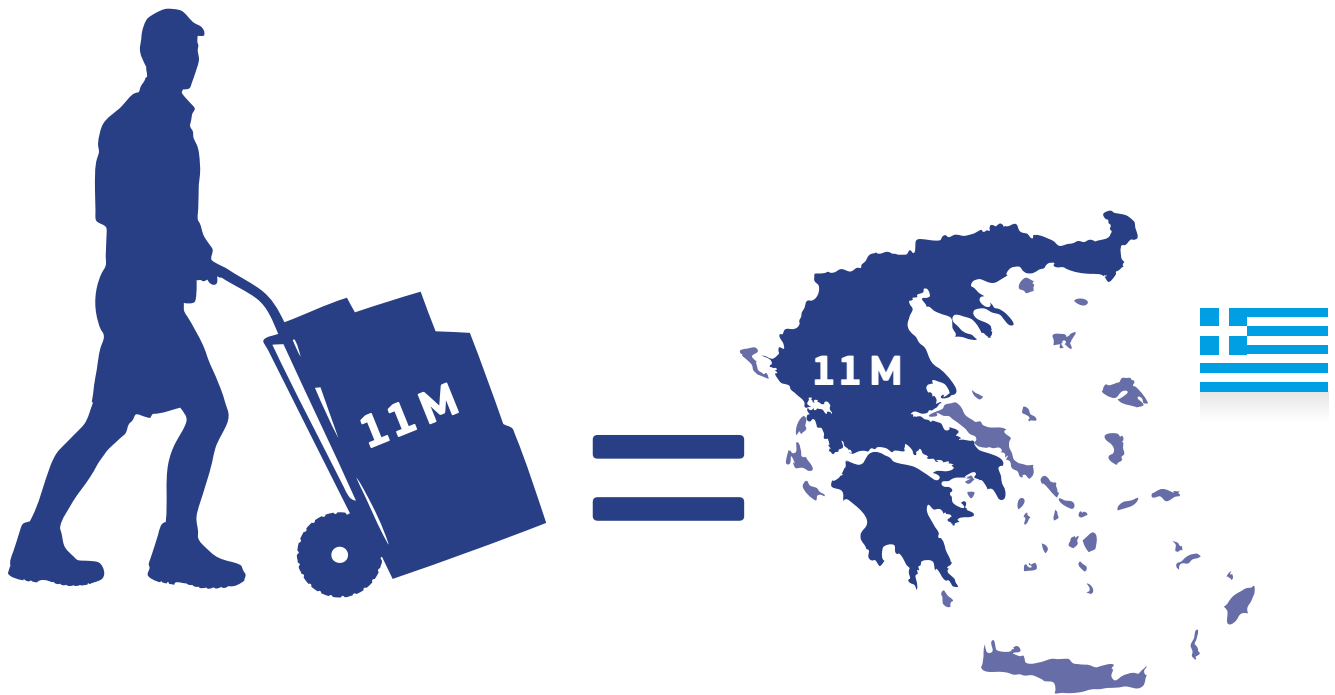
Transport provides work

**for millions of Europeans**

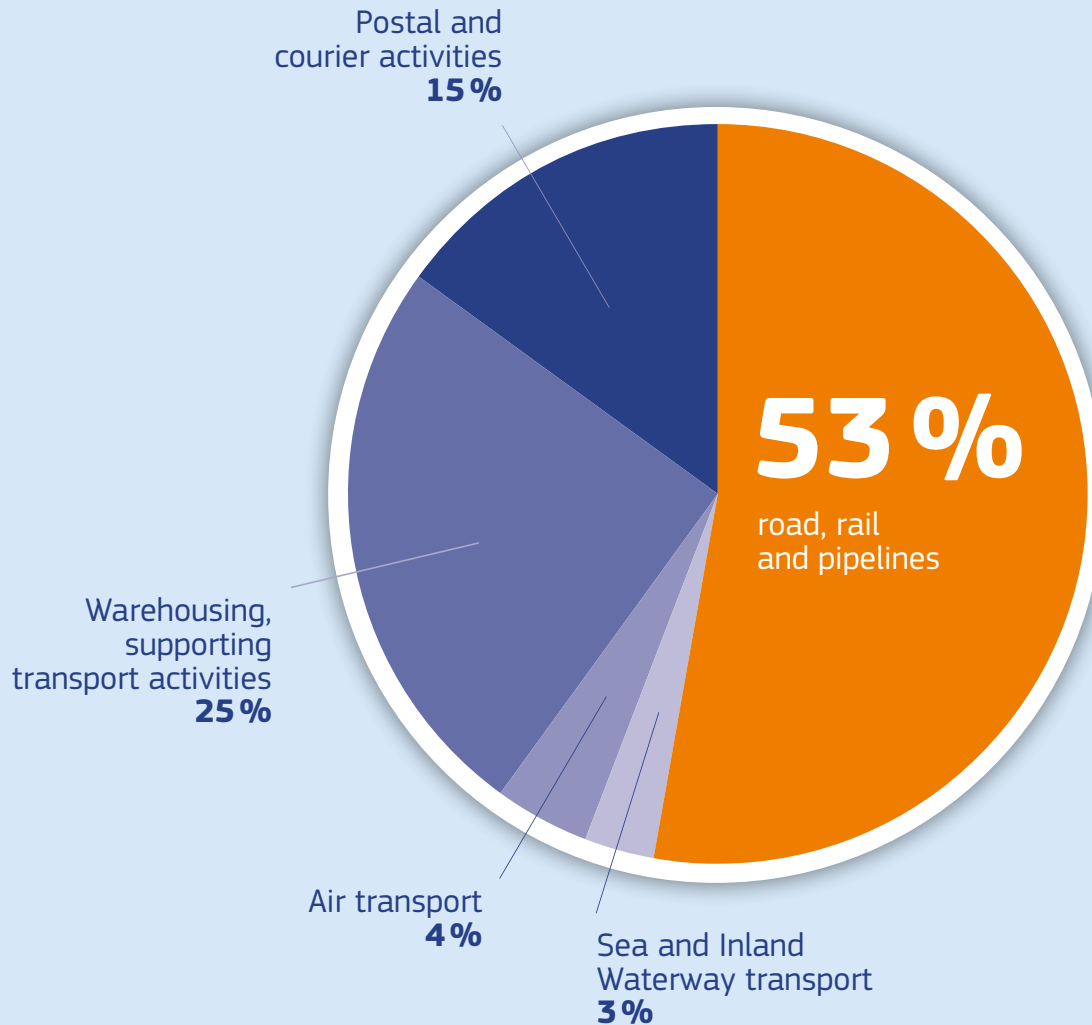


In Europe, **1 out of 20 jobs** is in the transport sector.

About **11 M Europeans** work in transport service-related jobs: that is almost the population of **Greece!**



**More than half** of transport service employees work in **land** transport (road, rail and pipelines).

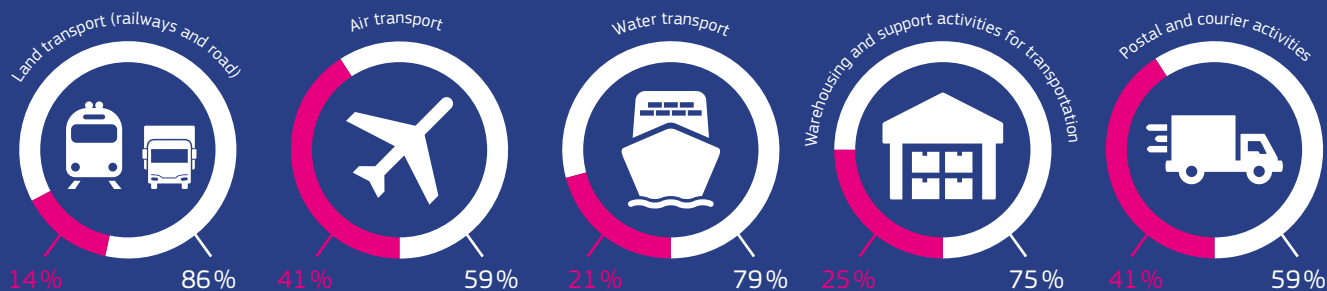


Source: Eurostat Labour Force Survey, 2014

# Only **22%** of transport workers are **women!**

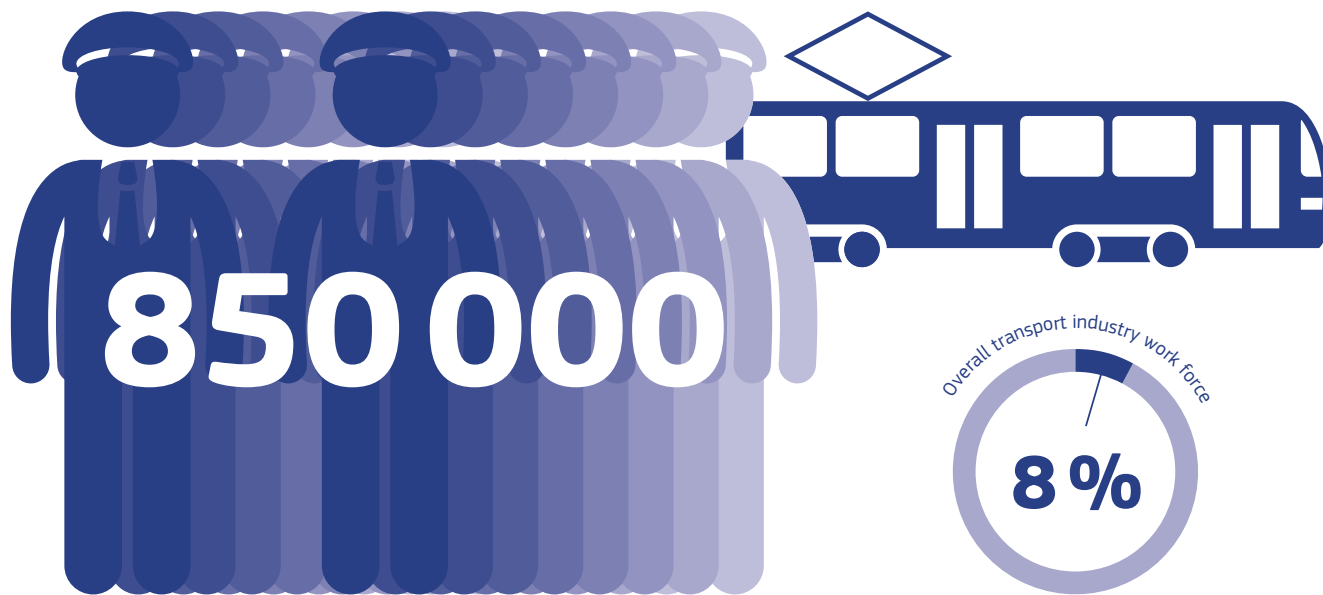


Share by gender and transport mode:



Source: Eurostat, Labour Force Survey, 2014

Urban and suburban passenger transport employs around **850 000 people**, representing around 8% of the overall transport industry work force.



Public transport is one of the largest employers at local level, such as in Amsterdam, Barcelona, Brussels and Dublin.