



www.globaltimbertrackingnetwork.org

Presentation outline



- GTTN in a nutshell
- From Phase I
- To Phase II : Project objective
- Project tasks
 - *International standards*
 - *Service portfolio and lab-finder*
 - *[Meta-]database of reference data*
 - *Communication, networking and outreach*
- Open alliance - GTTN Associate Member Organisation

2

GTTN Phase II in a nutshell



The objective of the Global Timber Tracking Network (GTTN) is to promote the operationalization of innovative tools for wood identification and origin determination to verify trade claims.

GTTN assists the fight against illegal logging and related trade around the globe, in support of the work of e.g. Monitoring Organisations, law enforcement agencies, or to assist operators' own due diligence systems.

GTTN is an open alliance that cooperates along a joint vision and the network activities are financed through an open multi-donor approach.

3

From GTTN Phase I (2012-2014) ...



- Pilot project financed by the German Ministry of Food and Agriculture (BMEL)
- Bioversity International coordinated the GTTN development in phase I
- Bringing together many of the stakeholders concerned about illegal logging and associated trade
- Intended as a global platform bringing together scientists, policy makers and other key players

4

From GTTN Phase I (2012-2014) ...



- To address issues in a holistic way, by promoting the integrated use of innovative timber identification and localization technologies

- ✓ DNA fingerprinting
- ✓ Stable isotope analysis
- ✓ Wood anatomy
- ✓ open to other methods also such as Mass spectrometry

Application examples:
Single out false declaration of:

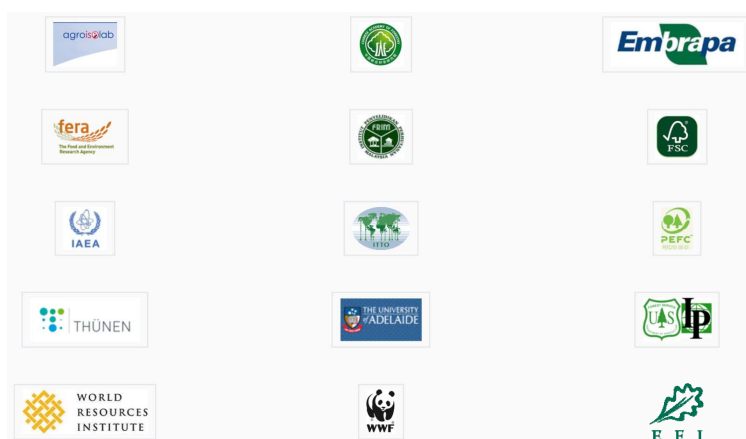
- Species: e.g. wood is of endangered species or excluded from legal harvest
- Country/region of origin: when export of a species is banned from a country

5

Phase I Partners -> Welcome to Phase II



GTNN remains **an open alliance** that cooperates along a joint vision.



6

... to GTTN phase II (2017-2019)



Main Goal

Promotion of the integrated use of innovative timber identification and localization technologies to combat illegal logging and associated trade worldwide.

- further develop and expand the network
- seek new partnerships
- facilitate active collaboration
- new funding sources

7

Global tasks



1. International standards
2. Service portfolio and lab-finder
3. [Meta-]database of reference data
4. Communication, networking and outreach

Proposed as cross-cutting themes for method-specific Working Groups

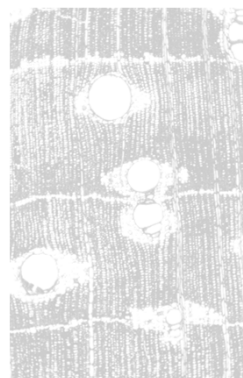
8

Task - International standards



Contribute to international standard setting on:

- Sampling
- Material storage
- Material exchange
- Methods for tests on tree species and geographic origin of timber
- Applicable regulation

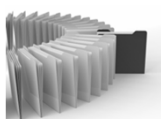


9

Task - Service portfolio and lab-finder



- Develop a laboratory and expert finder



- Develop guidance on best available method
- Depending on the product
- Depending on the claim of species and geographic origin
- Depending on the location of the customer
- For External users:
 - e.g. FB-I, monitoring organisations, enforcement and other public authorities

10

Task - [Meta-]database of reference data



For internal users: participating laboratories

Furthering the Phase I database

- geo-referenced DNA
- stable isotope data
- (wood anatomy catalogues)
- (mass spectrometric data)

Data repository centre:

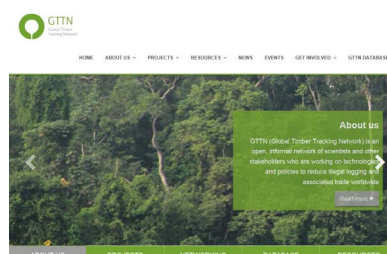
- One location or distributed databases
- Secure data entry and storage protocols
- Differentiated access levels

11

Task - Communication, networking and outreach

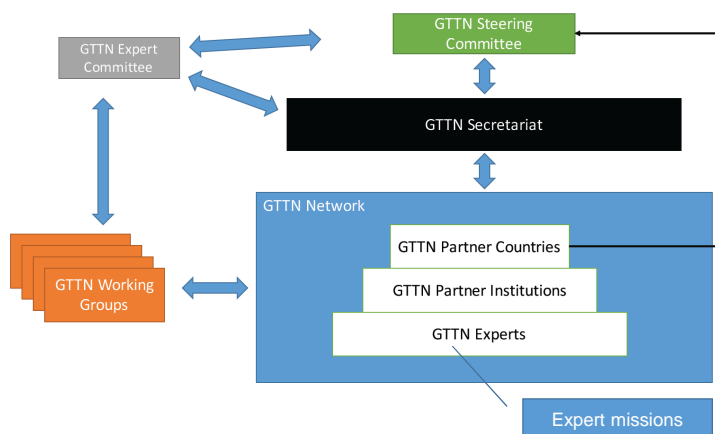


- GTIN website development and maintenance
- GTIN news, guidelines and other PR materials
- Organisation of regional workshops
- Assisting GTIN Associated Events
- Promotion of GTIN at global level



12

GTTN phase II Governance Structure



13

GTTN – an open alliance



- How can you get involved?
 - By contributing to a joint GTTN implementation agenda
 - e.g. on specific methods, species or countries of interest
 - By supporting experts directly in your country or by pooling funds into a multi-donor trust fund
 - For further info, please contact [jo.vanbrusselen \(a\) efi.int](mailto:jo.vanbrusselen@efi.int)

14

"What's in it for us?"



Researchers and tracking service supply side:

- Make your work more visible via events, website, publications
- Broaden your network by bringing you into contact with experts working on similar topics, possibility to synergize your efforts
- Access to reference data helps diversify your service portfolio
- Help you raising your lab's profile by engaging on the international scene
- Jointly create opportunities for new projects (funding!)

Practitioners, the demand side:

- Be at the forefront of novel methods design and take advantage of being an early adopter
- Influence prioritisation of systems development, species focus etc.
- Help tailor the development of GTTN services to meet your demand
- Your engagement will be visible through GTTN communications

15



With support from



by decision of the
German Bundestag

The objective of the Global Timber Tracking Network (GTTN) is to promote the operationalization of innovative tools for wood identification and origin determination, to assist the fight against illegal logging and related trade around the globe.

GTTN is an open alliance that cooperates along a joint vision and the network activities are financed through an open multi-donor approach. GTTN phase 2 coordination (2017-2019) is financed by the German Federal Ministry of Food and Agriculture (BMEL).

www.globaltimbertrackingnetwork.org