



GTNN

Global Timber
Tracking Network

www.globaltimbertrackingnetwork.org



Presentation outline

- GTTN in a nutshell
- From Phase I
- To Phase II : Project objective
- Project tasks
 - *International standards*
 - *Service portfolio and lab-finder*
 - *[Meta-]database of reference data*
 - *Communication, networking and outreach*
- Open alliance - GTTN Associate Member Organisation

GTTN Phase II in a nutshell



The objective of the Global Timber Tracking Network (GTTN) is to promote the operationalization of innovative tools for wood identification and origin determination to verify trade claims.

GTTN assists the fight against illegal logging and related trade around the globe, in support of the work of e.g. Monitoring Organisations, law enforcement agencies, or to assist operators' own due diligence systems.

GTTN is an open alliance that cooperates along a joint vision and the network activities are financed through an open multi-donor approach.

From GTTN Phase I (2012-2014) ...



- Pilot project financed by the German Ministry of Food and Agriculture (BMEL)
- Bioversity International coordinated the GTTN development in phase I
- Bringing together many of the stakeholders concerned about illegal logging and associated trade
- Intended as a global platform bringing together scientists, policy makers and other key players

Phase I Partners



From GTTN Phase I (2012-2014) ...



- To address issues in a holistic way, by promoting the integrated use of innovative timber identification and localization technologies

- ✓ DNA fingerprinting
- ✓ Stable isotope analysis
- ✓ Wood anatomy
- ✓ open to other methods also such as Mass spectrometry

Application examples:
Single out false declaration of:

- Species: e.g. wood is of endangered species or excluded from legal harvest
- Country/region of origin: when export of a species is banned from a country

... to GTTN phase II (2017-2019)



Main Goal

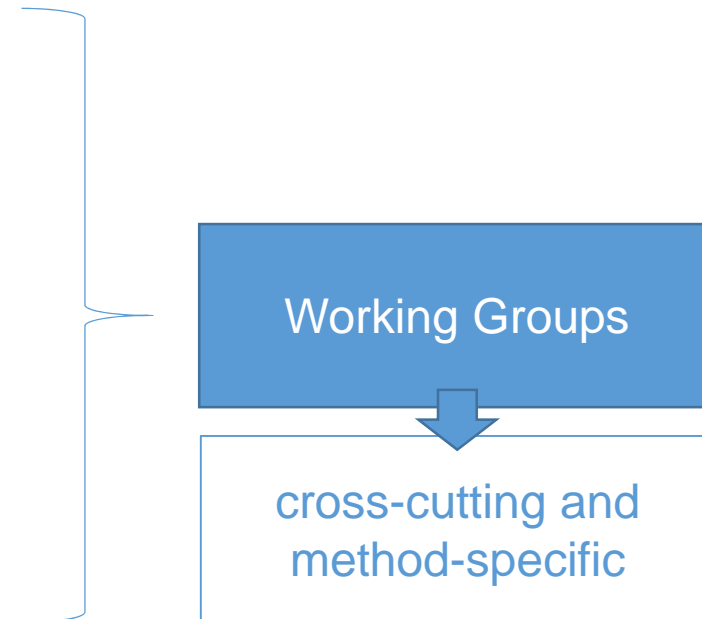
Promotion of the integrated use of innovative timber identification and localization technologies to combat illegal logging and associated trade worldwide.

- further develop and expand the network
- seek new partnerships
- facilitate active collaboration
- new funding sources

Global tasks



1. International standards
2. Service portfolio and lab-finder
3. [Meta-]database of reference data
4. Communication, networking and outreach

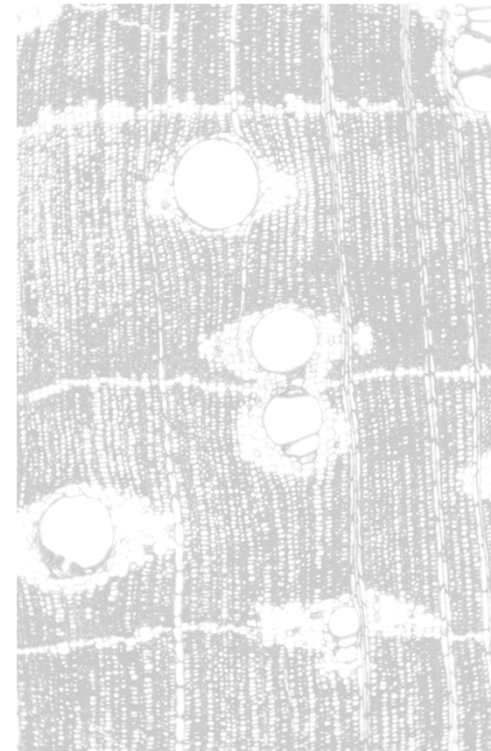


Task - International standards



Contribute to international standard setting on:

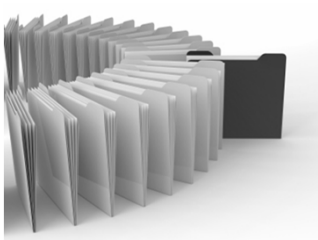
- Sampling
- Material storage
- Material exchange
- Methods for tests on tree species and geographic origin of timber
- Applicable regulation



Task - Service portfolio and lab-finder



- Develop a laboratory and expert finder



- Develop guidance on best available method
 - Depending on the product
 - Depending on the claim of species and geographic origin
-
- Depending on the location of the customer
 - For External users:
 - e.g. FB-I, monitoring organisations, enforcement and other public authorities

Task - [Meta-]database of reference data



For internal users: participating laboratories

Furthering the Phase I database

- geo-referenced DNA
- stable isotope data
- (wood anatomy catalogues)
- (mass spectrometric data)

Data repository centre:

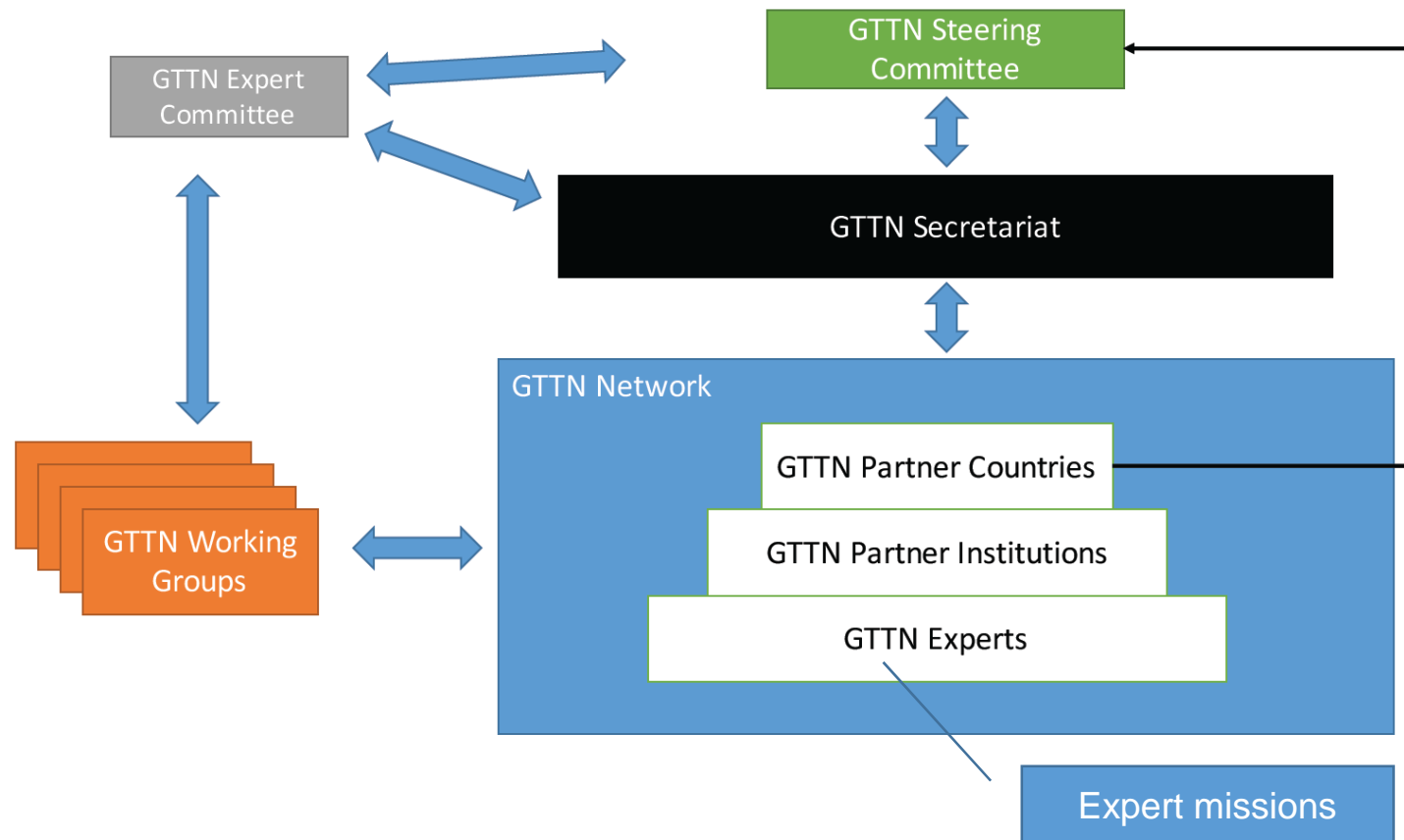
- One location or distributed databases
- Secure data entry and storage protocols
- Differentiated access levels

Task - Communication, networking and outreach



- GTTN website development and maintenance
- GTTN news, guidelines and other PR materials
- Organisation of regional workshops
- Assisting GTTN Associated Events
- Promotion of GTTN at global level

GTTN phase II Governance Structure



GTTN – an open alliance



- How can you get involved?
 - By contributing to a joint GTTN implementation agenda
 - e.g. on specific methods, species or countries of interest
 - By supporting experts directly in your country or by pooling funds into a multi-donor trust fund
 - For further info, please contact [jo.vanbrusselen \(a\) efi.int](mailto:jo.vanbrusselen@efi.int)



With support from



by decision of the
German Bundestag

The objective of the Global Timber Tracking Network (GTTN) is to promote the operationalization of innovative tools for wood identification and origin determination, to assist the fight against illegal logging and related trade around the globe.

GTTN is an open alliance that cooperates along a joint vision and the network activities are financed through an open multi-donor approach. GTTN phase 2 coordination (2017-2019) is financed by the German Federal Ministry of Food and Agriculture (BMEL).

www.globaltimbertrackingnetwork.org