



**Ministry of Food, Agriculture
and Fisheries of Denmark**

Danish Veterinary and
Food Administration

The Danish preparedness model

- a network approach

Mr. Nikolas Kühn Hove

Head of crisis management

Danish Veterinary and Food
Administration

National contingency plan

Describes the **National crisis management system**

Applies universally to any type of incident

Primarily intended for use in the event of **extraordinary incidents** that require a **coordinated response** from the affected **central authorities**.

General principles for preparedness planning and crisis management

- ✓ Sector-responsibility
- ✓ Similarity
- ✓ Subsidiarity
- ✓ Cooperation
- ✓ Precaution



Government crises management

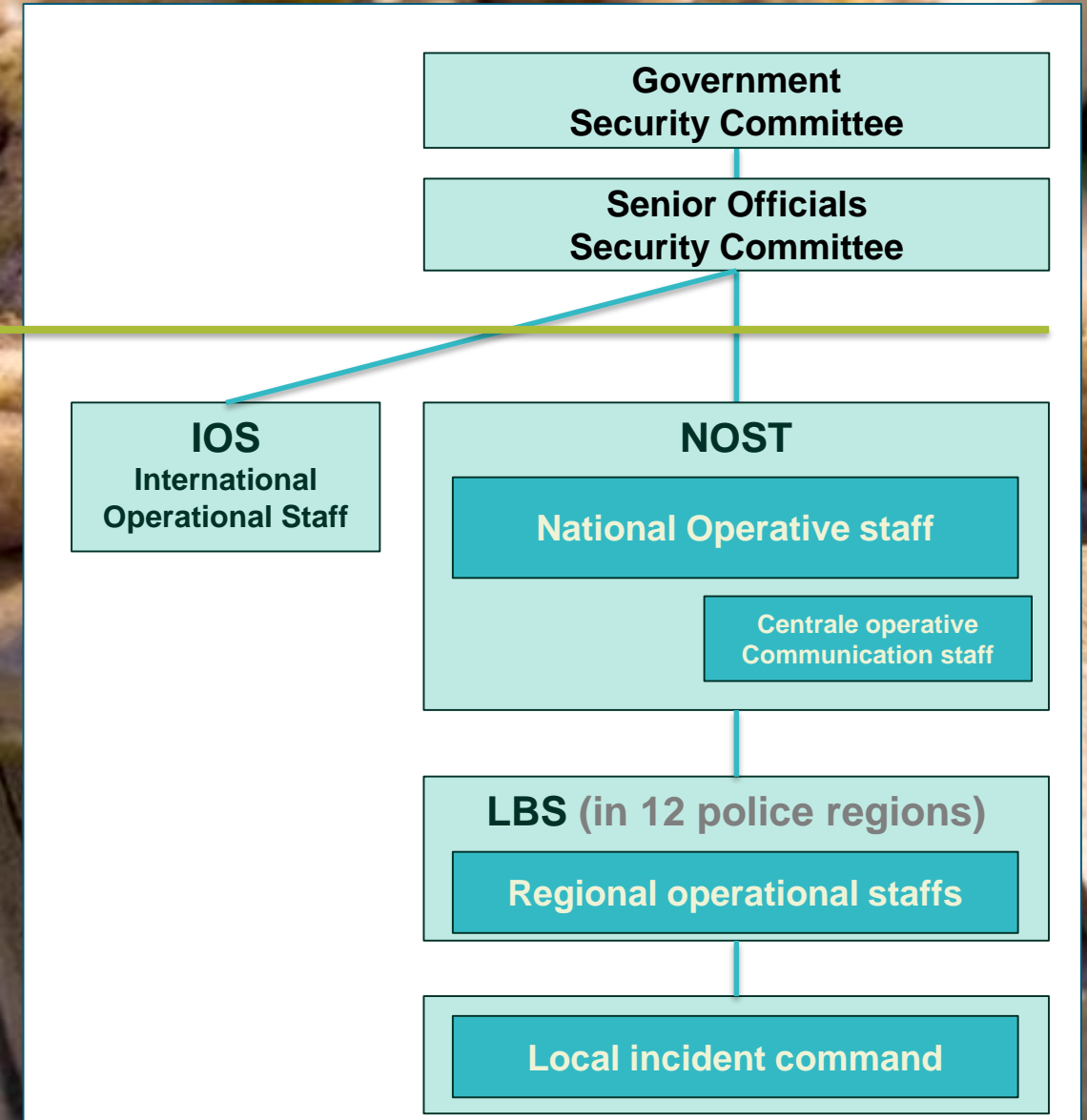
Crisis Management's Organizational Framework

at National, Regional, Local

Establish and maintain an situation overview -
to ensure quickly and effectively decisions

Ensure active cooperation and efficient
coordination

Provide information and instructions for the
public



Danish Veterinary and Food Administration (DVFA)

Crisis management contingency plan

Used to dealing with risk

- ✓ Animal health, animal welfare & veterinary medicine
- ✓ Food and feed safety
- ✓ Foodborne outbreaks and chemical contamination
- ✓ And more...

Crisis management is a has several similarities

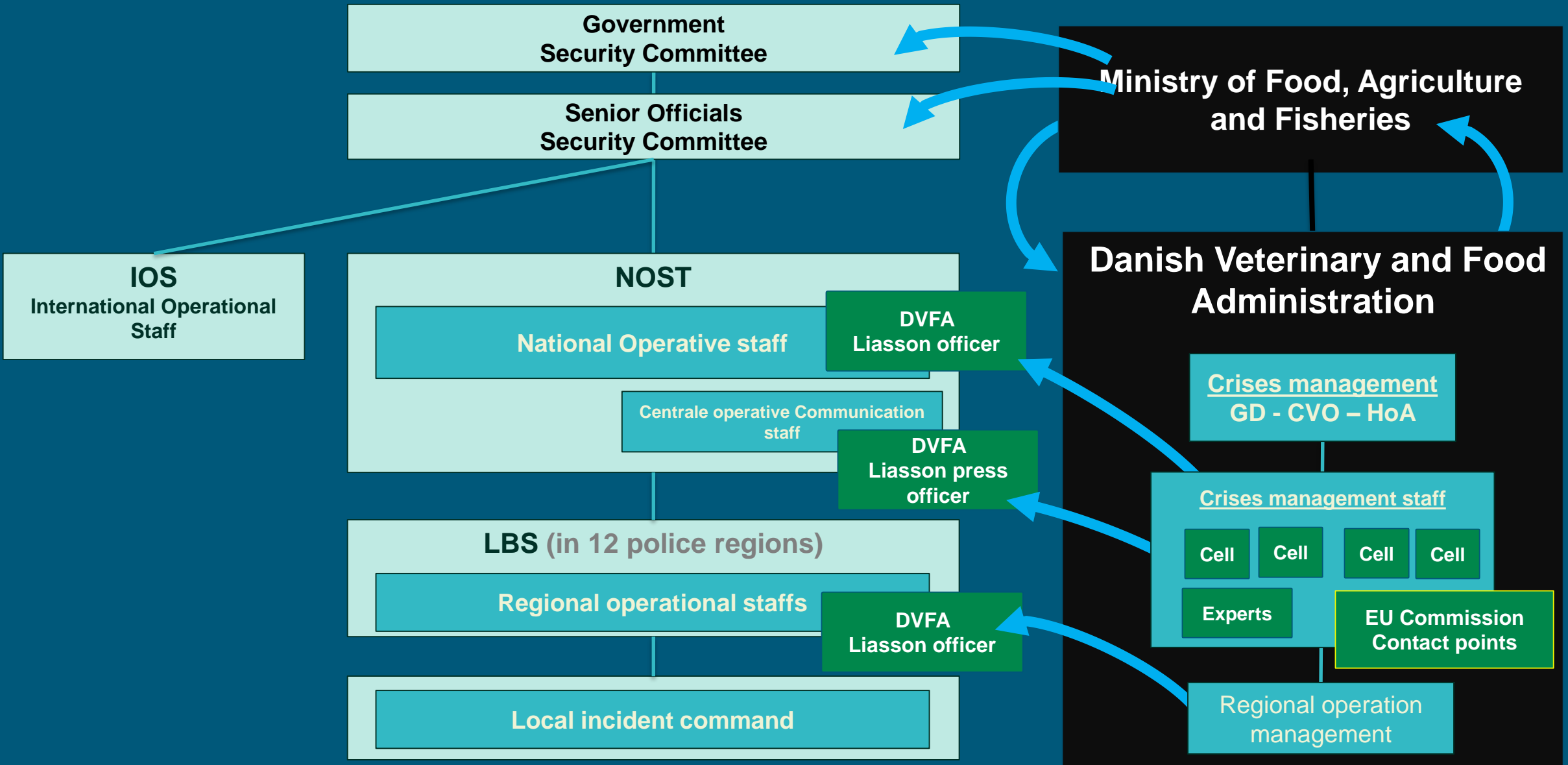
- Good decision-making as a basis for strategic decisions
- Ministry service
- Press inquiries
- Dialogue with industries and other authorities
- Communication internally and externally

Builds on strategic focus on stakeholders

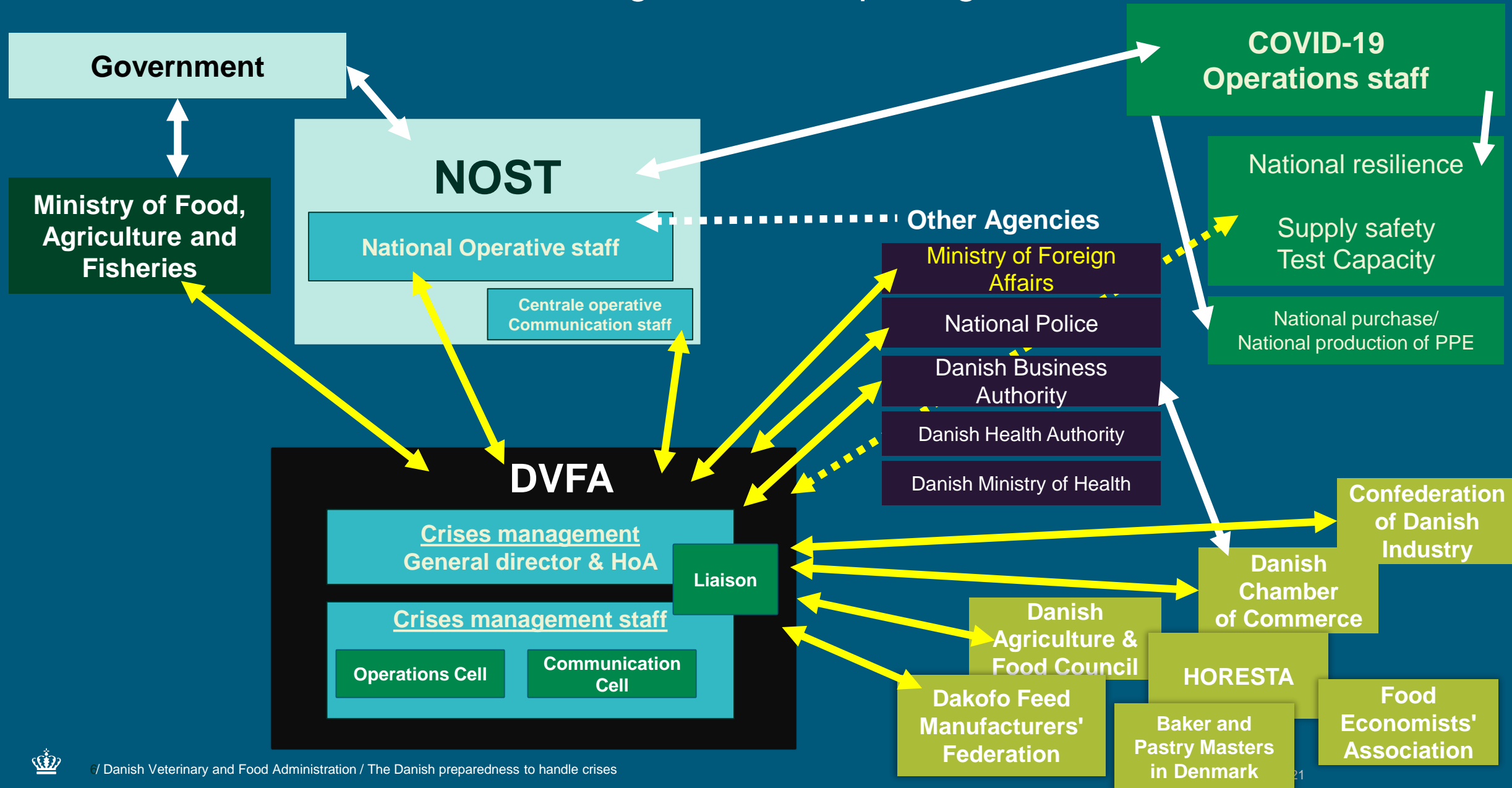
- Stakeholder relationships (Director and case officer level)
- Business organizations involvement in animal welfare and food safety
- Close contact to other government agencies (Director and case officer level)



DVFA in the National crisis management system



DVFA in the COVID-19 crisis management set-up – Light

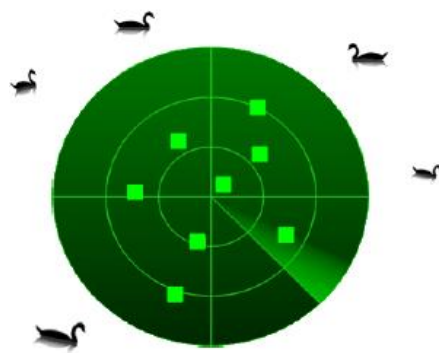


A network approach

National contingency plan based on peer to peer approach

Holistic approach including stakeholders (GOV and NGO) and industry organizations

Mindful approach [learn - don't blame]



Build your crises management network to stakeholder in peace time

