



29th Meeting of the “Multi-Stakeholder Platform on Protecting and Restoring the World’s Forests”

September 24, 2024



Table of Contents

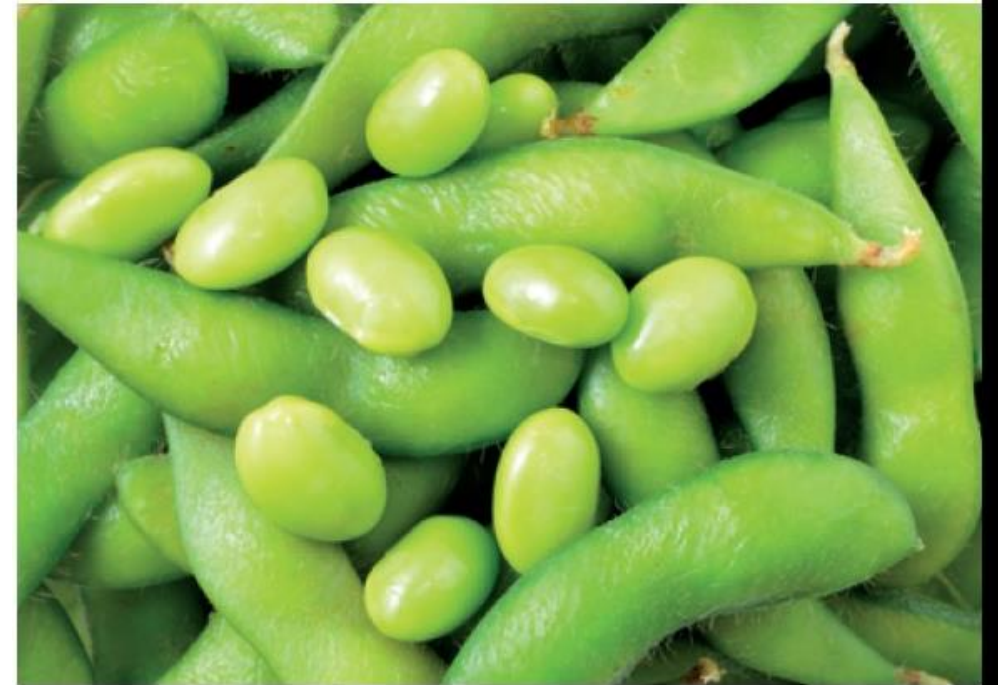
About ADM:

- Who we are globally
- What we do

How ADM is preparing for EUDR:

- Global soy production
- ADM's program preparation
- U.S. program
- Traceable, segregated and verified soy programs

Final remarks



ADM: Who We Are Globally

GLOBAL FOOTPRINT



~ 750

Facilities



~ 300

Food & Feed
Processing Locations



>200

Countries Served



~ 440

Crop Procurement
Locations



42,000

Employees

CREDENTIALS



10,100

EMEA-based employees
(25% of global workforce)



1902

Founded



ADM

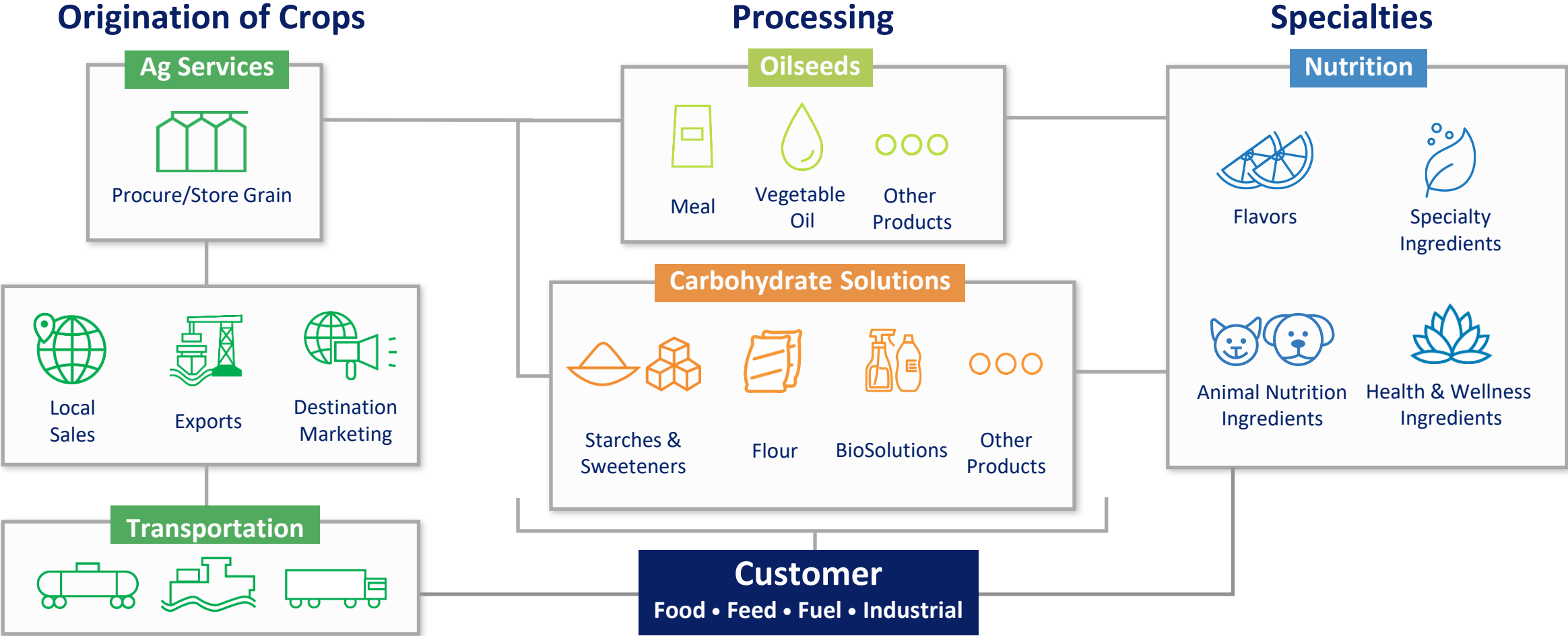
NYSE Since 1924



64

Innovation
Centers

ADM: What We Do



Global soy production



Global Soybean Producing Countries

Country	2023/2024	Unit Description	
Brazil	153,000.00	(1000 MT)	39%
United States	113,344.00	(1000 MT)	29%
Argentina	48,100.00	(1000 MT)	12%
China	20,840.00	(1000 MT)	5%
India	11,875.00	(1000 MT)	3%
Paraguay	11,000.00	(1000 MT)	3%
Canada	6,981.00	(1000 MT)	2%
Russia	6,800.00	(1000 MT)	2%
Ukraine	5,200.00	(1000 MT)	1%
Others	17,614.00	(1000 MT)	4%
Total	394,754.00		

Source: Foreign Agricultural Service, Official USDA Estimates.

AMIS - GEOGLAM Crop Calendar

Selected leading producers*

SOYBEANS	J	F	M	A	M	J	J	A	S	O	N	D
Brazil (40%)	C	C	Harvest						Planting			C
US (30%)				Planting	C	C	C	Harvest				
Argentina (10%)	C	C	C	Harvest							Planting	
China (5%)					Planting	C	C	Harvest				
India (4%)						Planting	C	C	Harvest			

*Percentages refer to the global share of production according to the latest AMIS-FAO estimates available for the 2022/23 season

Planting (peak)	Harvest (peak)
Planting	Harvest
Weather conditions in this period are critical for yields	Growing period

Source: AMIS crops

ADM's program preparation



**Engaging
farmers**

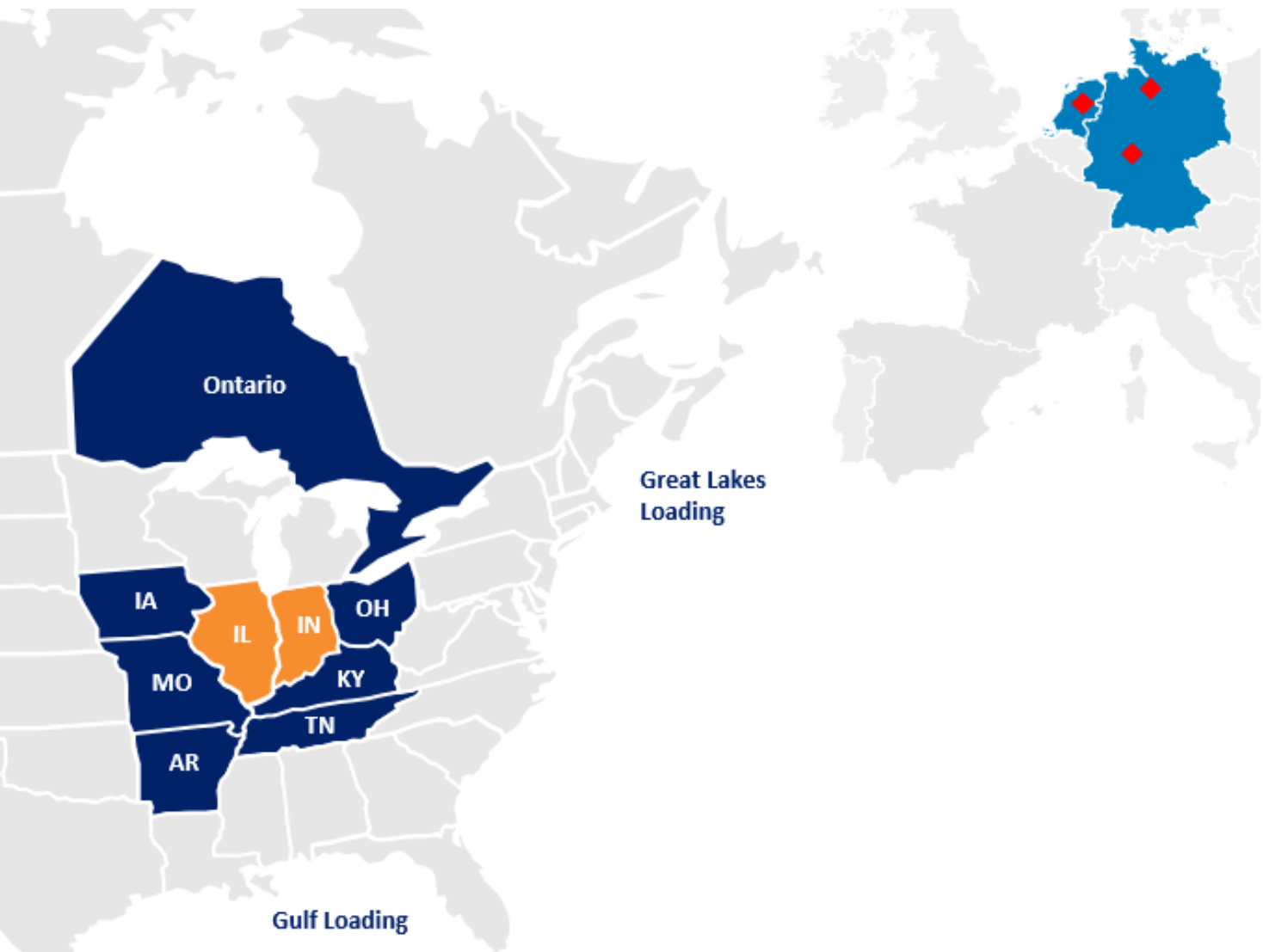


**Building over
existing programs**



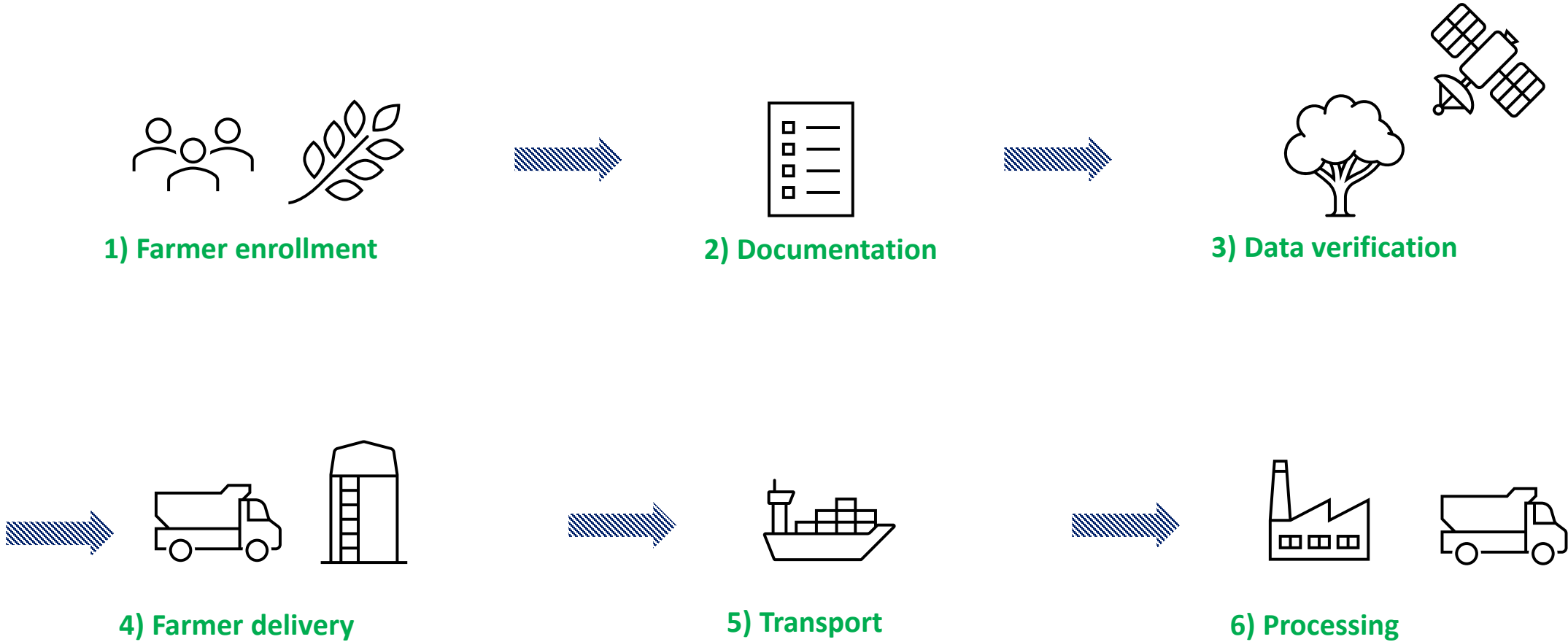
**Engaging early in
Regulation's preparation**

U.S. program: traceable, segregated and verified soy



- ◆ Sourcing locations for executed pilot program
- ◆ Sourcing locations identified for scaling volume
- ◆ ADM Rotterdam, ADM Hamburg and Mainz crush plants where EUDR beans were processed

Traceable, segregated and verified soy programs





Final remarks

Q&A

