

Overview of RSPO's new certification, trade and traceability system for EUDR compliance

15 December 2023

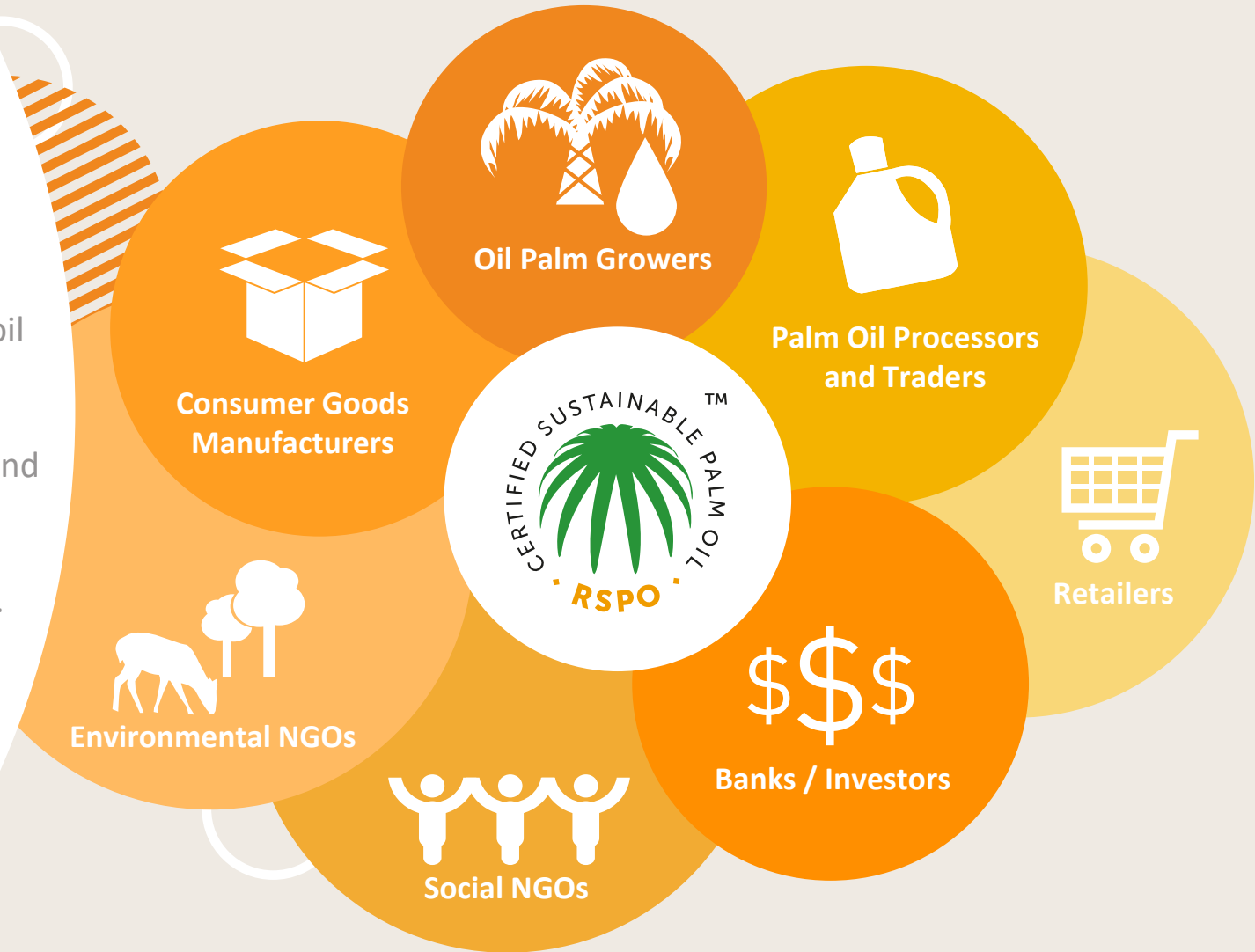


ABOUT US

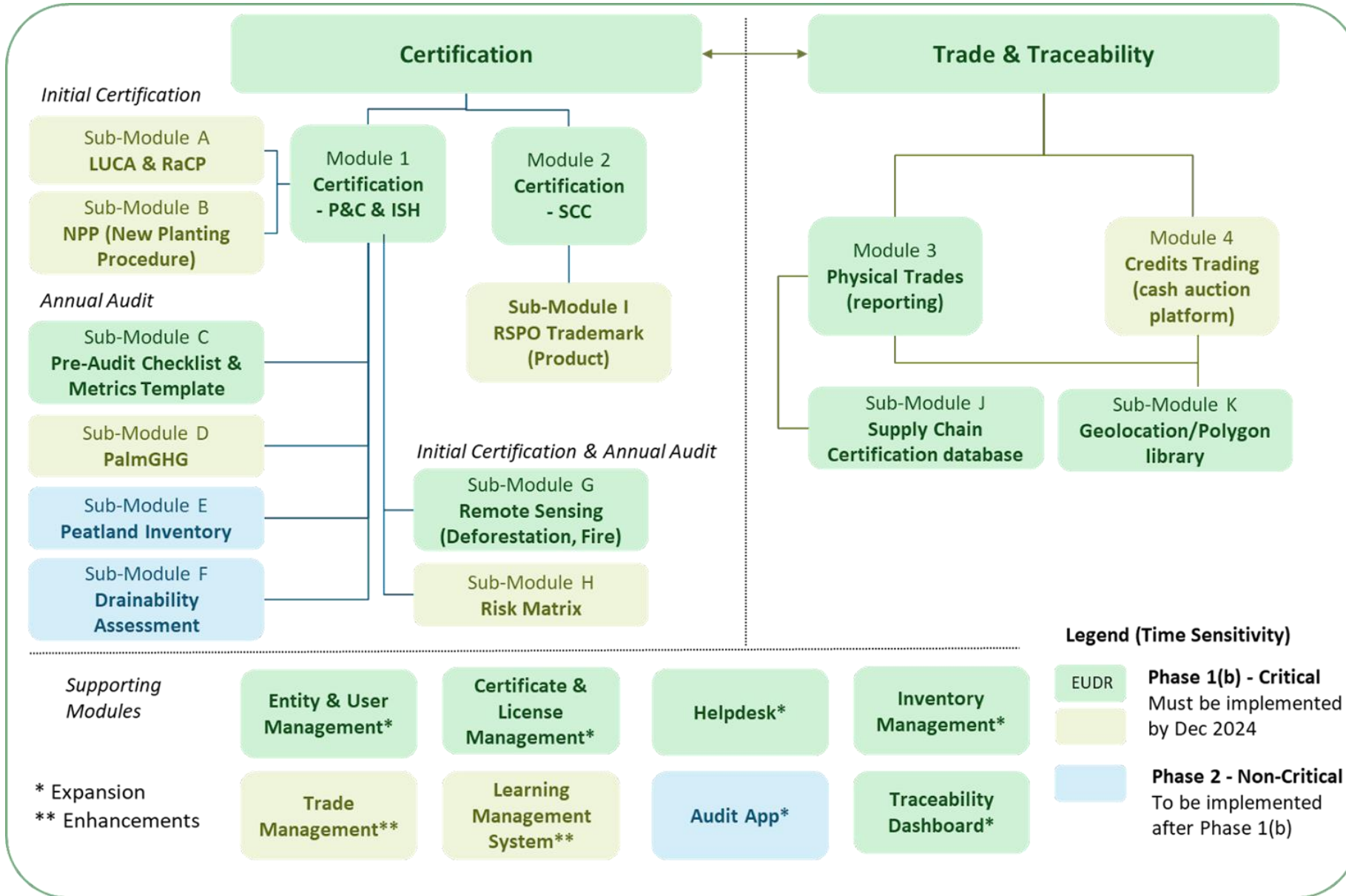
Established in 2004, RSPO is a not-for-profit, international membership organisation formed as a global partnership of stakeholders to make the production and consumption of palm oil sustainable through credible standards and awareness.

Today, RSPO has more than 5,700 members in 101 countries and territories. Over 5 million hectares of oil palm areas across 24 countries and 20% of global palm oil production is RSPO certified. Yields of RSPO certified sustainable palm oil per hectare is almost double that of conventional palm oil. RSPO certified sustainable palm oil and palm kernel oil accounts for 8.1% of global vegetable oil production, supplied from only 1% of the global area harvested for all vegetable oils – producing more from less.

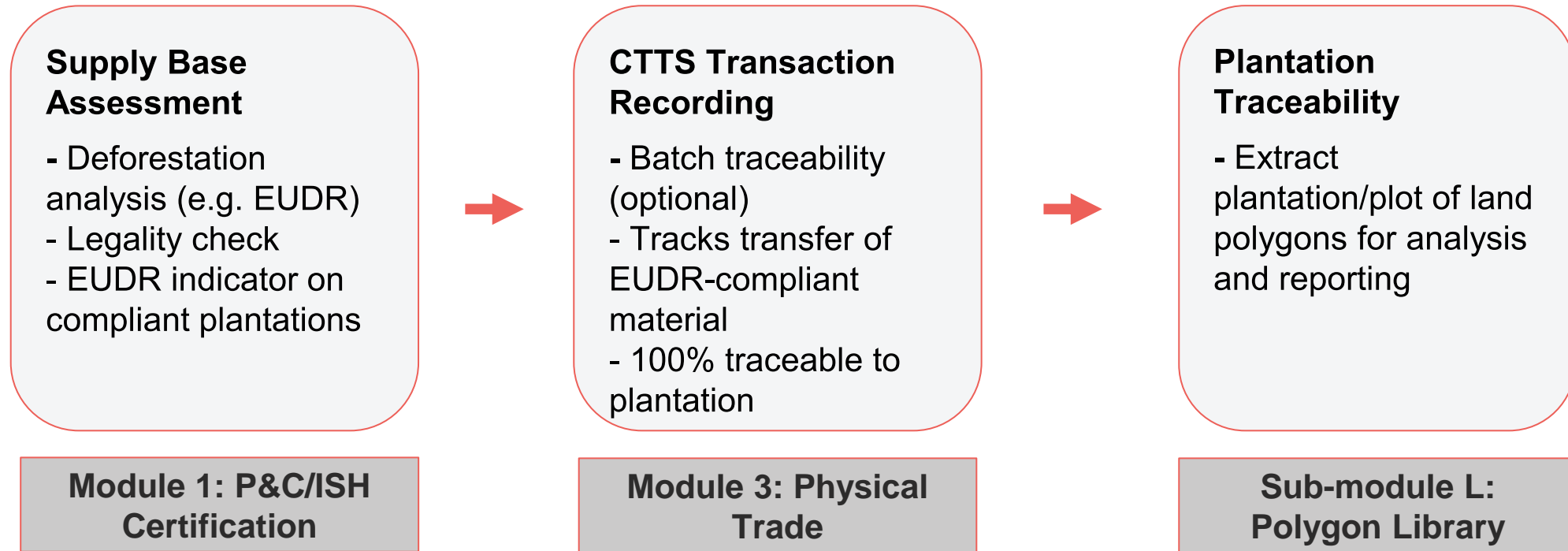
RSPO | Roundtable on Sustainable Palm Oil



System design schematic and development/implementation scope



Adaptations of system design schematic for EUDR compliance



Key EUDR system adaptations (for RSPO members importing or exporting RSPO oil palm products into and from the EU)

- Additional verification workflow to assess if plots of land are compliant with EUDR through remote sensing (Sub-module G)
- Allows for batch traceability to ensure 100% Traceability-to-Plantation/TTP per transaction (voluntary basis)
- Traceability dashboard with GIS visualisation (e.g., plantation sourcing) for RSPO members in the downstream supply chain
- Plantation/geolocation boundaries extractable and transmissible in GeoJSON format for reporting of EUDR DDS
- Two levels of traceability data will be provided: 1) Overall batch traceability and transaction data to RSPO supply chain certified facilities handling EUDR-compliant material and 2) Detailed and granular traceability data to the RSPO supply chain certified first importer into or first exporter from EU for use in the event of EUDR audits by NCAs.



THANK YOU