

THE EUROPEAN CARE STRATEGY FIRST ANNIVERSARY



7 September 2023
#EUCareStrategy

The **European Care Strategy** was presented on **7 September 2022**. It is accompanied by two proposals for Council recommendation on the revision of the Barcelona targets on early childhood education and care, and on access to affordable high-quality long-term care, adopted by the Council on 8 December 2022.

It aims to ensure **high-quality affordable and accessible care services** and improve the situation of **care providers**, both formal and informal.

The Strategy turns into action the **European Pillar of Social Rights**, especially principle 11 on childcare and support to children and principle 18 on long-term care.

The Strategy responds to clear needs in the EU:



Almost **half of people aged 65+ did not receive the care they needed** in 2019.



To keep the current long-term care coverage, **more than 1.6 million long-term care workers will have to be added** by 2050.



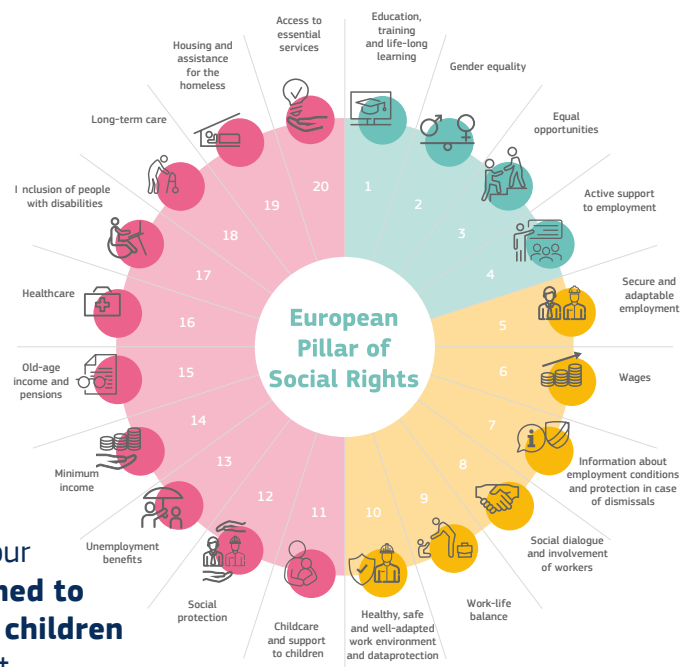
In 2022, **women aged 25-49** outside the labour force and willing to work were **10x more inclined to indicate care of adults with disabilities or children** as the main reason for not seeking employment.



In 2019, the **EU reached on average the target for participation in early child education and care** (ECEC) set in 2002, but progress is still needed, particularly as for participation of children at risk of poverty and social exclusion.



Public support for the care sector is a **social investment** which, in parallel with action on sustainable financing, brings **multiple returns for individuals, society and the economy**.



WHAT HAPPENED DURING THE FIRST YEAR OF THE EUROPEAN CARE STRATEGY

ON LONG-TERM CARE

- ✓ **The EU budget is supporting** long-term care **reforms and investments** in at least 18 Member States.
- ✓ A **strategic partnership between the European Commission and the World Health Organisation** will help Member States design national reforms and will support the training of informal carers.
- ✓ Member States appointed **[national long-term care coordinators/ contact points](#)** and held the first **mutual learning exchange on quality of long-term care**, one of the key aspects of the Council Recommendation on long-term care. They have until June 2024 to decide on implementation measures for the Council Recommendation.
- ✓ The EU continues to improve evidence and monitoring of long-term care through better data.



ON WORKFORCE

- ✓ Partners of the **[large-scale partnership for long-term care](#)** committed to training at least 60% of the long-term care workforce (3.8 million workers) every year by 2030.
- ✓ The new **[European social dialogue committee for social services](#)** will contribute to better working conditions in the sector.



ON EARLY CHILD EDUCATION AND CARE / WORK-LIFE BALANCE

- ✓ The Commission launched a **Communication Campaign** on challenging gender stereotypes and equal sharing of childcare between parents.
- ✓ The Commission continues to monitor the implementation of the Work-life balance directive for parents and carers to ensure the correct transposition of its provisions by Member States. A **seminar** organized by the Commission and Equinet supported Equality Bodies in building their capacity in efficiently implementing the Work-Life Balance Directive and ensuring a strong protection of parents and carers.
- ✓ The EU continues to work to improve the **quality** and monitoring of **Early Child Education and Care data**.

