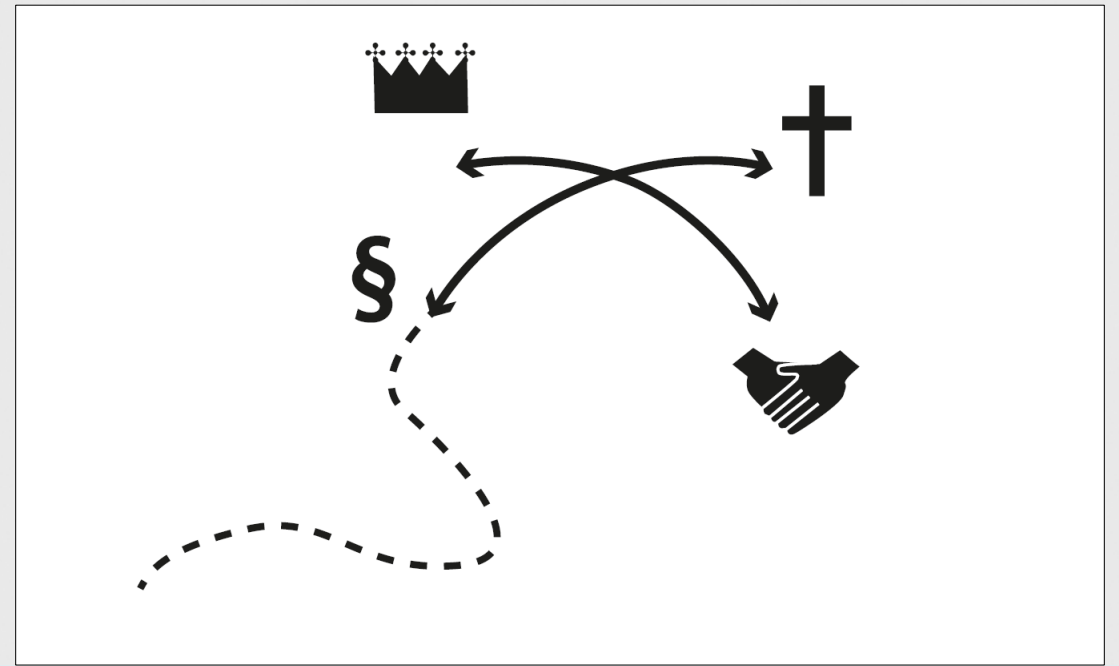


# WELCOME TO VIBORG!

## Viborg

- Located in the middle of Jutland on a range of steep hills.
- The city dates back to 900 AC.
- Medieval capital of Jutland.
- Religious center (“Jerusalem of the North”).
- Home for the main court of the western part of Denmark.
- The place where kings were crowned.



# *Accessibility in a historical city centre – new ways to the cultural heritage in Viborg*

## **Challenges**

The accessibility to the cultural heritage is challenged by:

- Steep risings
- A medieval street network
- Stairs
- Cobbled streets



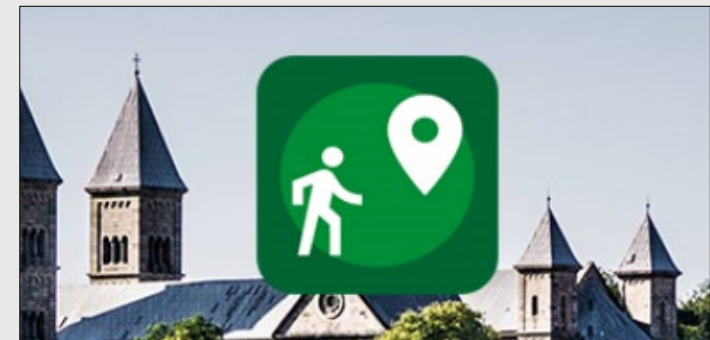
# Accessibility in a historical city centre – new ways to the cultural heritage in Viborg

## Background

The project about accessibility was realized together with 4 Danish foundations in 2010-2018.

- Realdania
- Bevica Foundation
- The Danish Disability Foundation
- The Labour Market Holiday Fund
- Viborg Municipality

Part of "League of Historical and Accessible Cities" under European Foundation Centre.



## ACCESSIBLE ROUTES IN HISTORICAL CITIES

A best practice guide for the planning, design, implementation and marketing of accessible routes in historical urban environments



# Accessibility in a historical city centre – new ways to the cultural heritage in Viborg

## Focus

- To develop new innovative solutions for both physical measures and communication.
- To make the historical values of Viborg equal accessible to all – without damaging the authenticity.



# Accessibility in a historical city centre – new ways to the cultural heritage in Viborg

## Focus

- The initiatives benefit and can be used by all – with or without disabilities.
- All have equal access and are free in their choices.



# Accessibility in a historical city centre – new ways to the cultural heritage in Viborg

## Solutions - physical measures

- New levelled pavements
- Ramps
- Guiding lines and tactile pavement
- Levelled resting platforms
- Using the existing materials of the cityscape – granite.



Tomorrow:

The historical city of Viborg is accessible for all through discreet and almost invisible solutions using the existing materials in the cityscape

# Accessibility in a historical city centre – new ways to the cultural heritage in Viborg

## Nytorv

After

Before



# *Accessibility in a historical city centre – new ways to the cultural heritage in Viborg*



Nytorv new pavement



# *Accessibility in a historical city centre – new ways to the cultural heritage in Viborg*



Dominican's Church

# Accessibility in a historical city centre – new ways to the cultural heritage in Viborg



Before



After

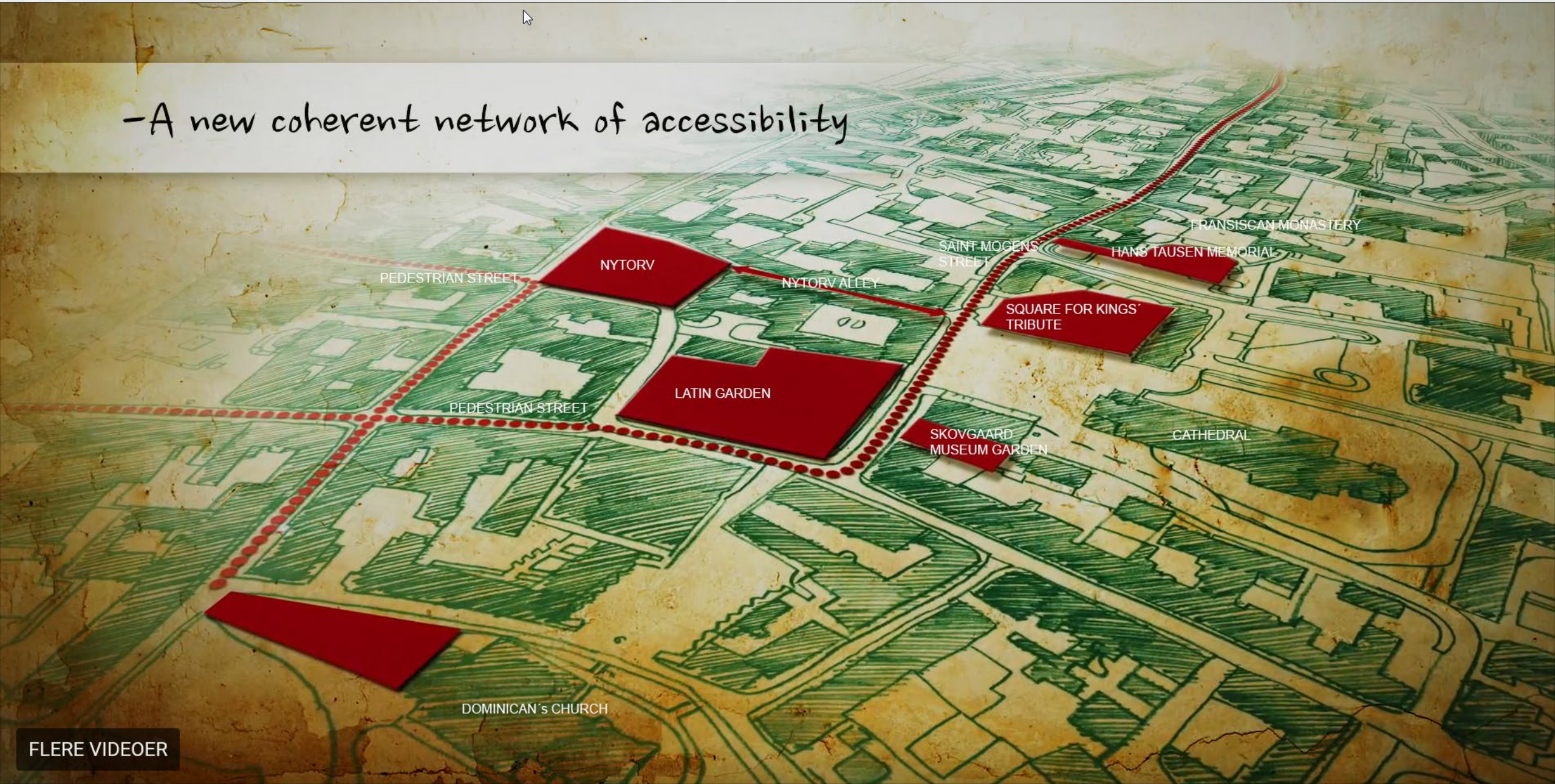


Latin Garden



# Accessibility in a historical city centre – new ways to the cultural heritage in Viborg

-A new coherent network of accessibility



# Accessibility in a historical city centre – new ways to the cultural heritage in Viborg

## Solutions - communication

- New signs and city models now make it easier to find the way through the city.
- They are made of tombac – an existing material in the cityscape.

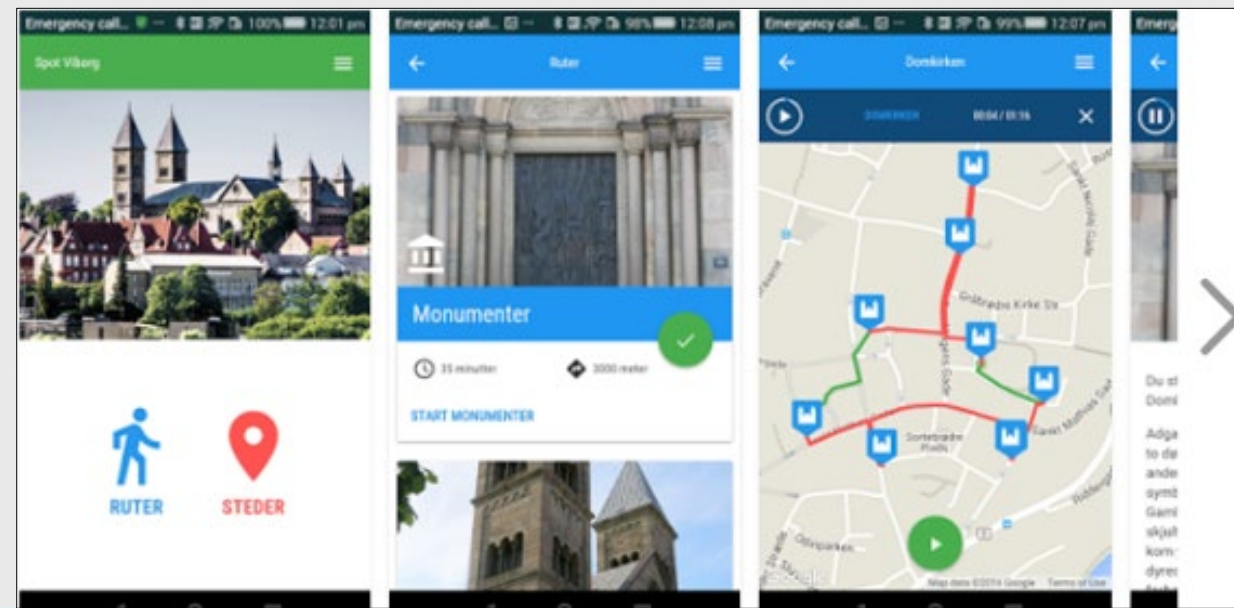
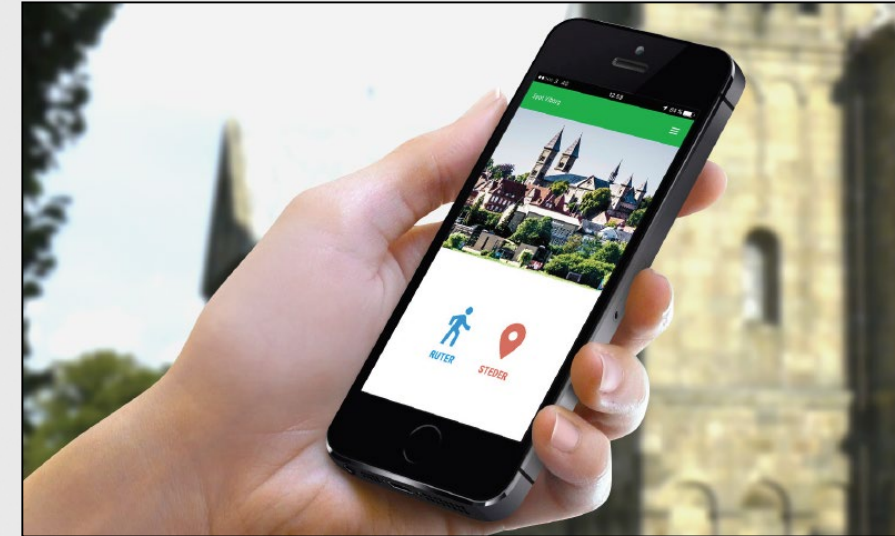


<  Museumshaven

# Accessibility in a historical city centre – new ways to the cultural heritage in Viborg

## The app “Spot Viborg”

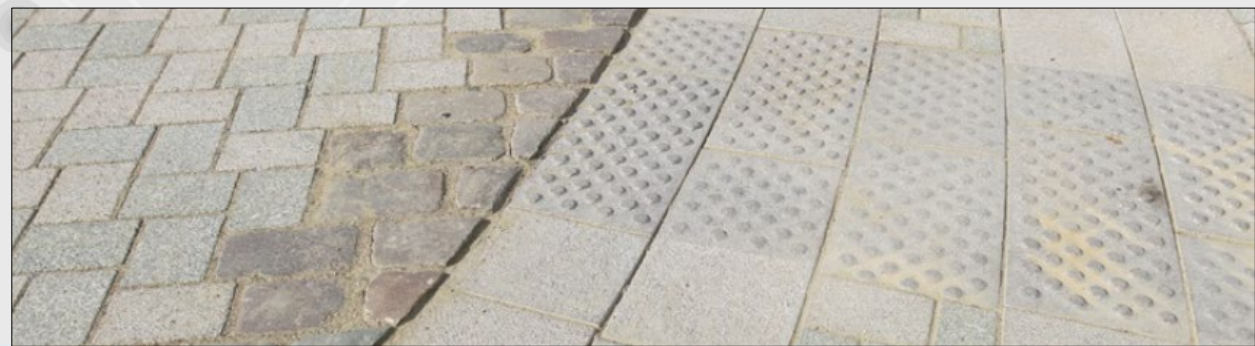
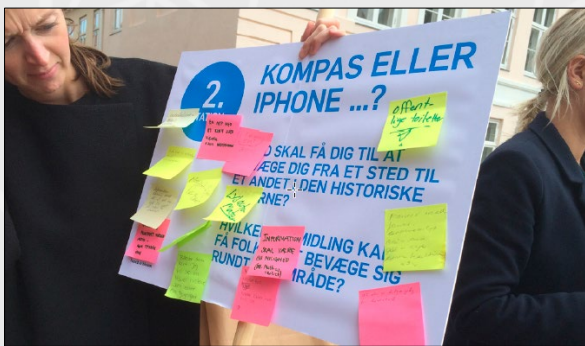
- Three accessible itineraries: “Monuments”, “Churches” or “Secret Places”.
- General information about accessible toilets, parking lots etc.
- Using the opportunities given by mobil phones such as GPSTracking, sound and vision.



# Accessibility in a historical city centre – new ways to the cultural heritage in Viborg

## Cooperation

The project is developed and realized in collaboration with a consulting knowledge-panel and a local working group.



## Accessibility in a historical city centre – new ways to the cultural heritage in Viborg

“As users we have been an active part of the genesis of this project which gives us a great satisfaction.

We are pleased that accessibility has been seen in a wider perspective than the mere physical aspects.

The process has been positive. Our proposals have been adopted and further developed thus giving us great value. We are sure that other people will benefit from this also.”



*The working group "The city of accessibility"*

*Moving further – a new accessible cultural super-attraction around the cathedral*





# Accessibility in a historical city centre – new ways to the cultural heritage in Viborg

# THANK YOU!



[www.viborg.dk/tilgaengelighed](http://www.viborg.dk/tilgaengelighed)