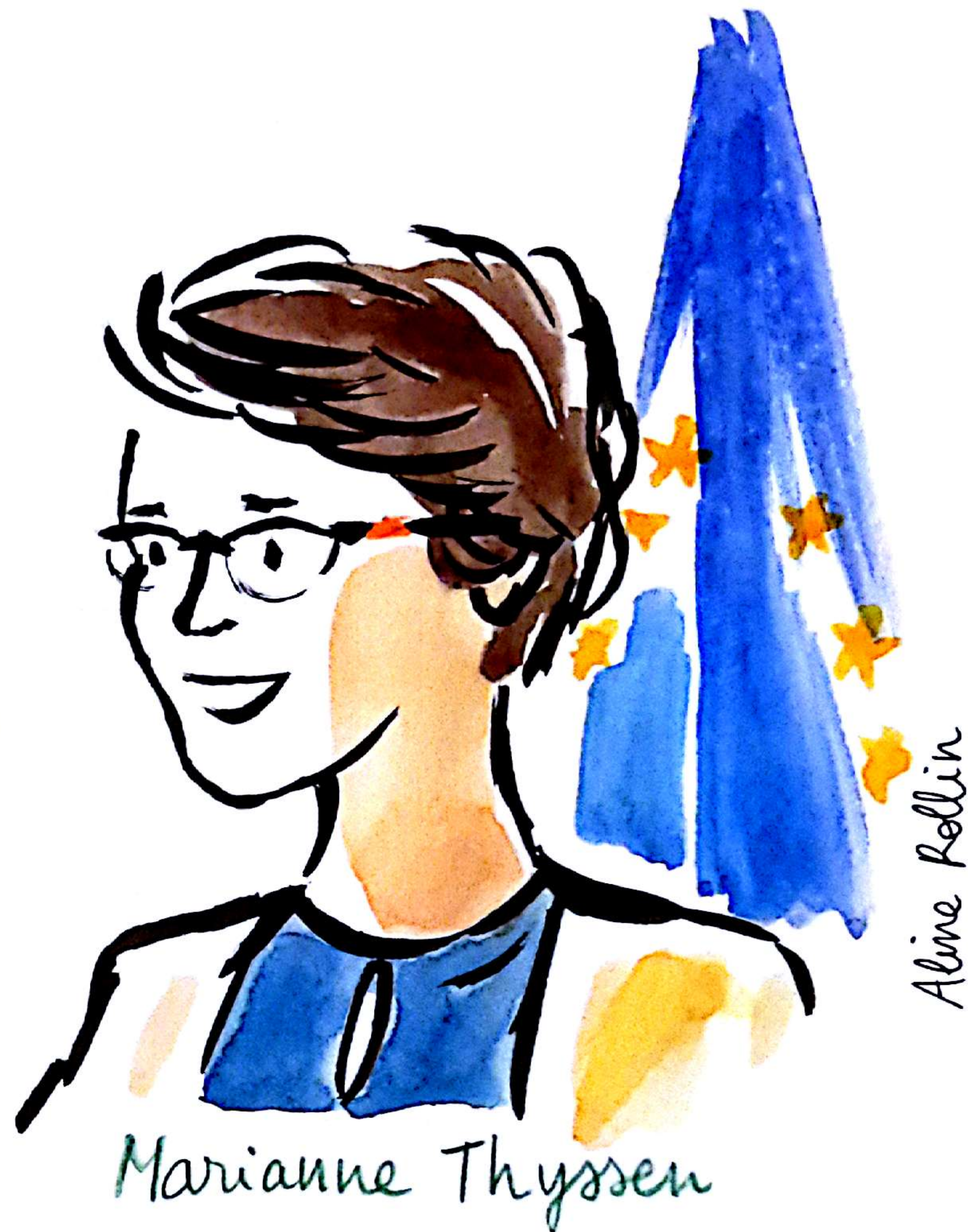


ANNUAL CONVENTION  
for INCLUSIVE GROWTH 2019

Three years ago we started  
a journey together. Today,  
I am proud of what  
we achieved!



Aline Rollin

Marianne Thyssen  
European Commissioner for  
Employment, Social Affairs, Skills  
and Labour Mobility



ANNUAL CONVENTION  
FOR INCLUSIVE GROWTH 2019

One of the priorities  
of the Romanian presidency  
is to develop  
the social dimension  
of the EU, through the  
implementation of the  
European Pillar of Social  
Rights.



Elena Solomonescu  
State Secretary, Ministry of Labour  
and Social Justice, Romania



ANNUAL CONVENTION  
for INCLUSIVE GROWTH 2019

If you want to understand  
and move people, you have  
to understand different  
views.



Maitreyi Seetharaman  
Co-Chair, Fortune Most Powerful  
Women International



Economy and Growth  
are at the top  
of European concerns.





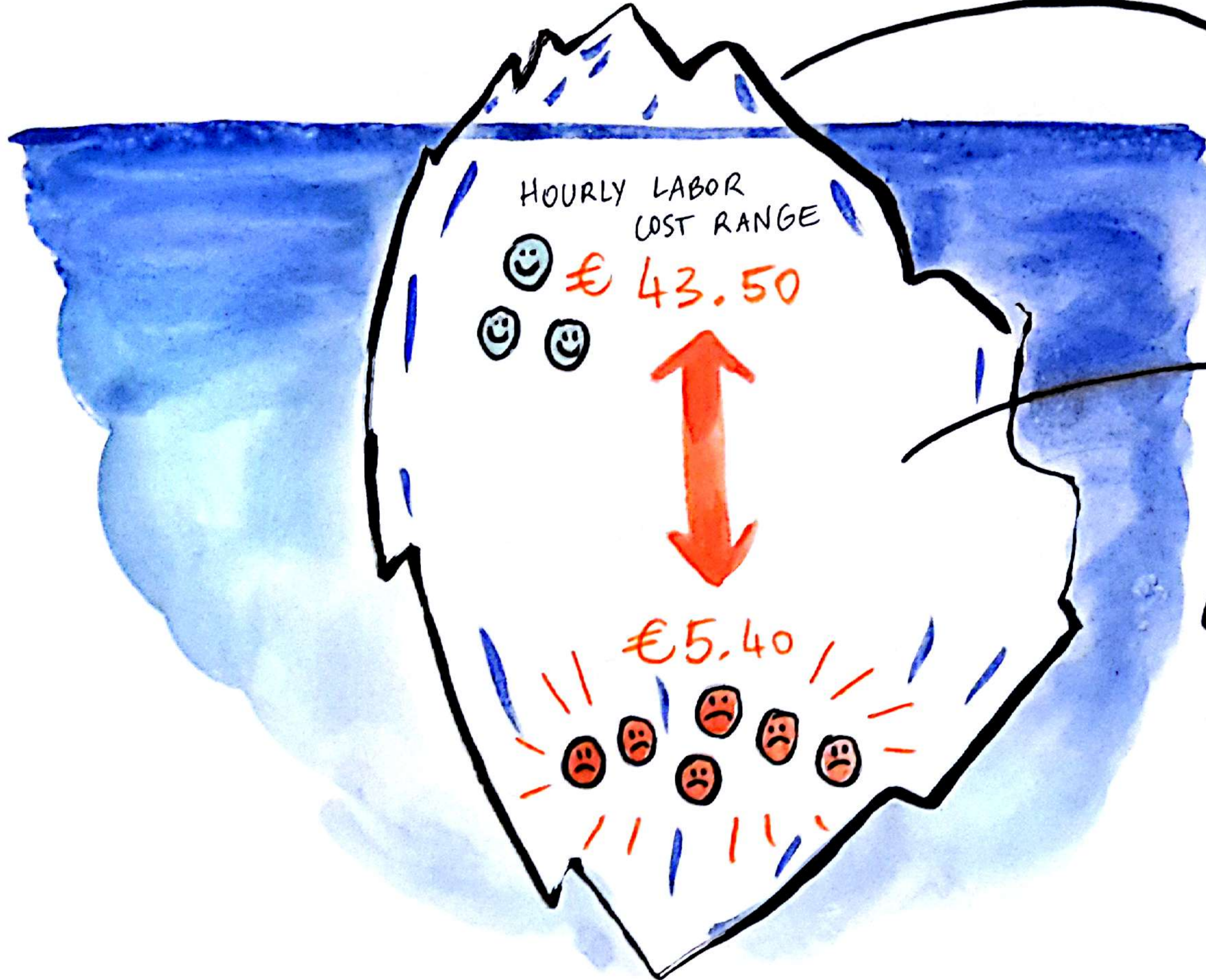
Let's think  
out of the boxes!



We must  
talk to everyone.



Be careful of  
INFORMATION SILOS.

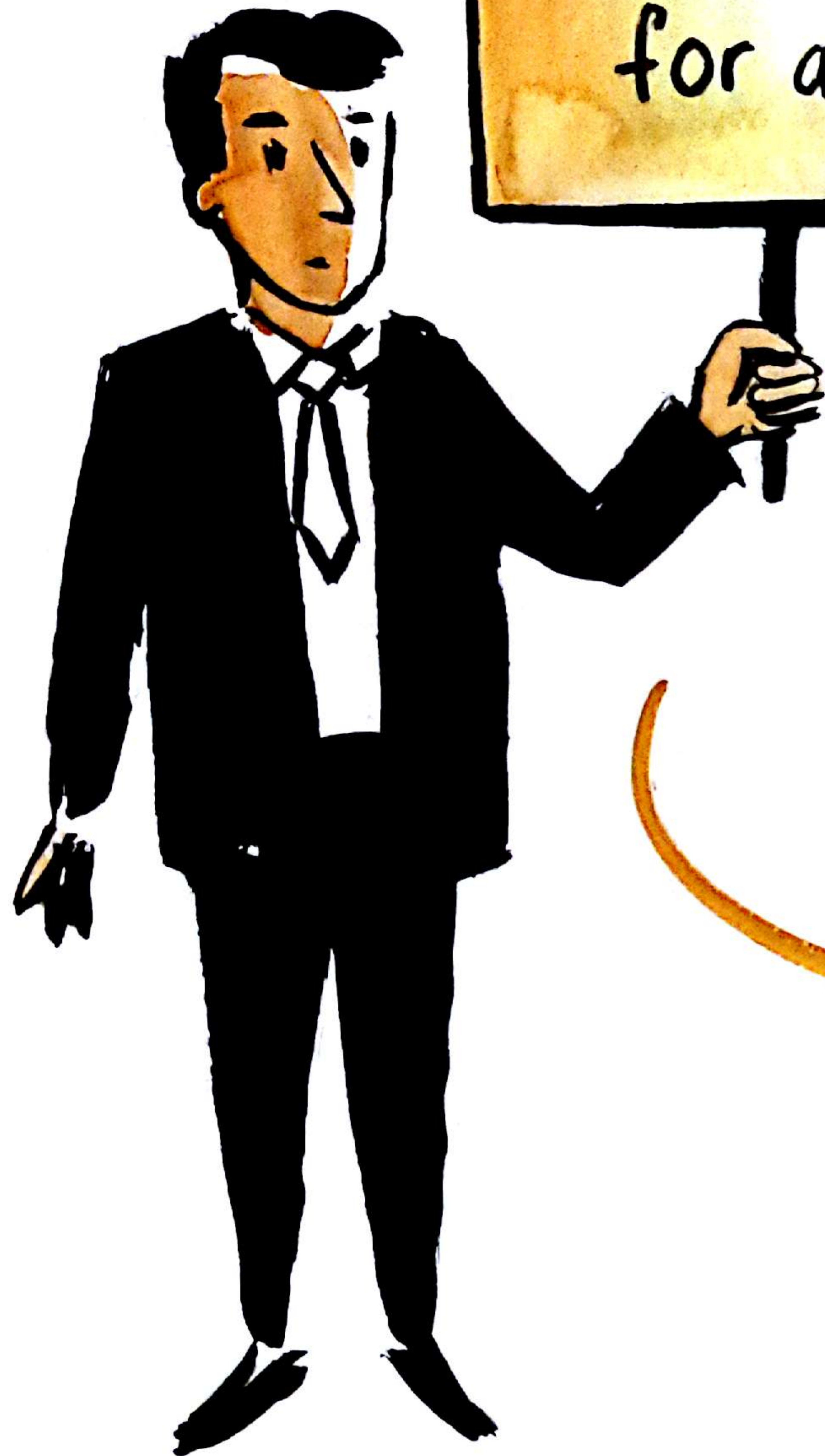


Global data  
looks better...

... but income  
distribution is  
getting worse.







LOST MY HOME.  
Need money  
for a shower.

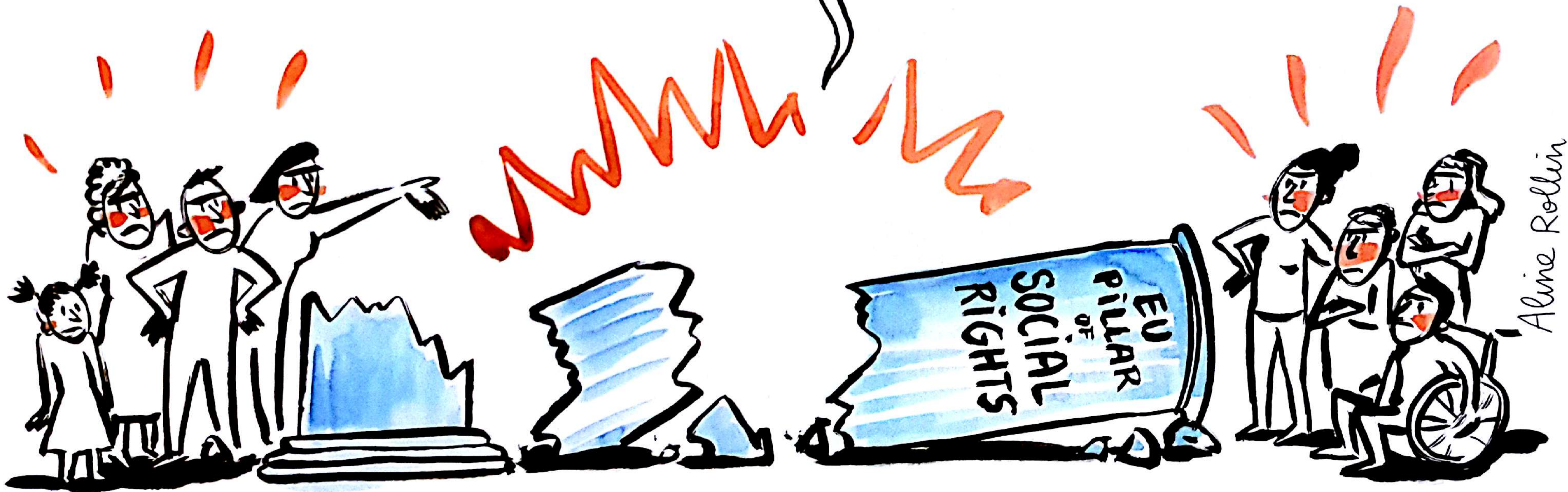
Anger  
and Dignity.

from Maithreyi Seetharaman's speech.



ACIG 2019  
WORKSHOP 1

If the implementation  
of the European Pillar of Social Rights  
is not achieved, then we will lose  
the support of citizens.





WORKSHOP 2

Social policies:



should walk together  
toward a long-term target.





WORKSHOP 3



Europe needs  
more super-heroes!

AMBASSADORS  
FOR SOCIAL EUROPE

Aline Rollin





"One size fits all" ...  
NO!

Learners need to be empowered to be architects of their learning pathways.



WORKSHOP 5

ABOUT THE NEXT  
FINANCIAL  
FRAMEWORK  
AND FUNDING  
INSTRUMENTS:

We should  
include the  
right to fail!



Alvine Rollin



## WORKSHOP 6

### EU DISABILITY STRATEGY:

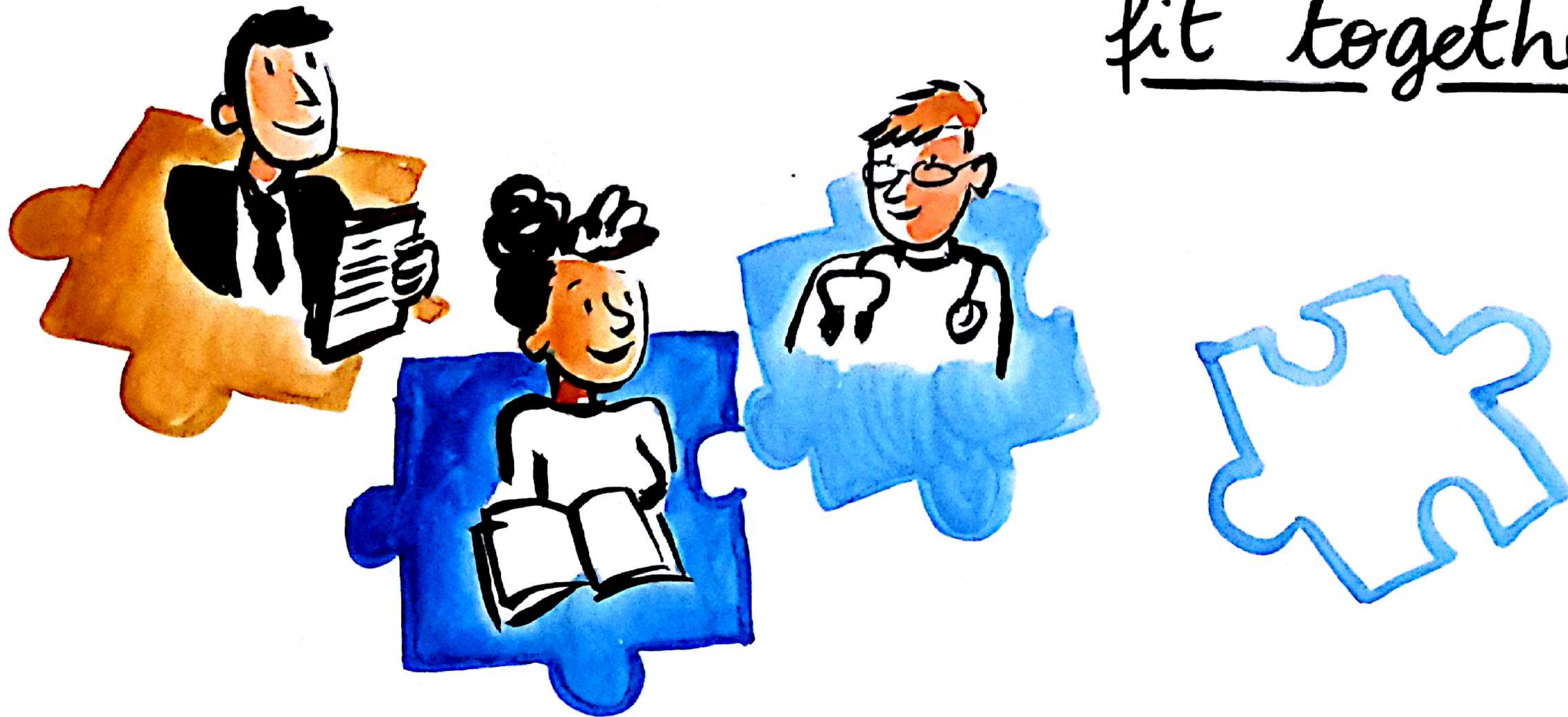
We need more impacts  
and actions that transform  
society and people's lives.





## SOCIAL SERVICES:

An integrated approach doesn't mean bundling all services in the same plan, but as pieces of a jigsaw puzzle that can fit together.





Thank you all for your  
contribution!

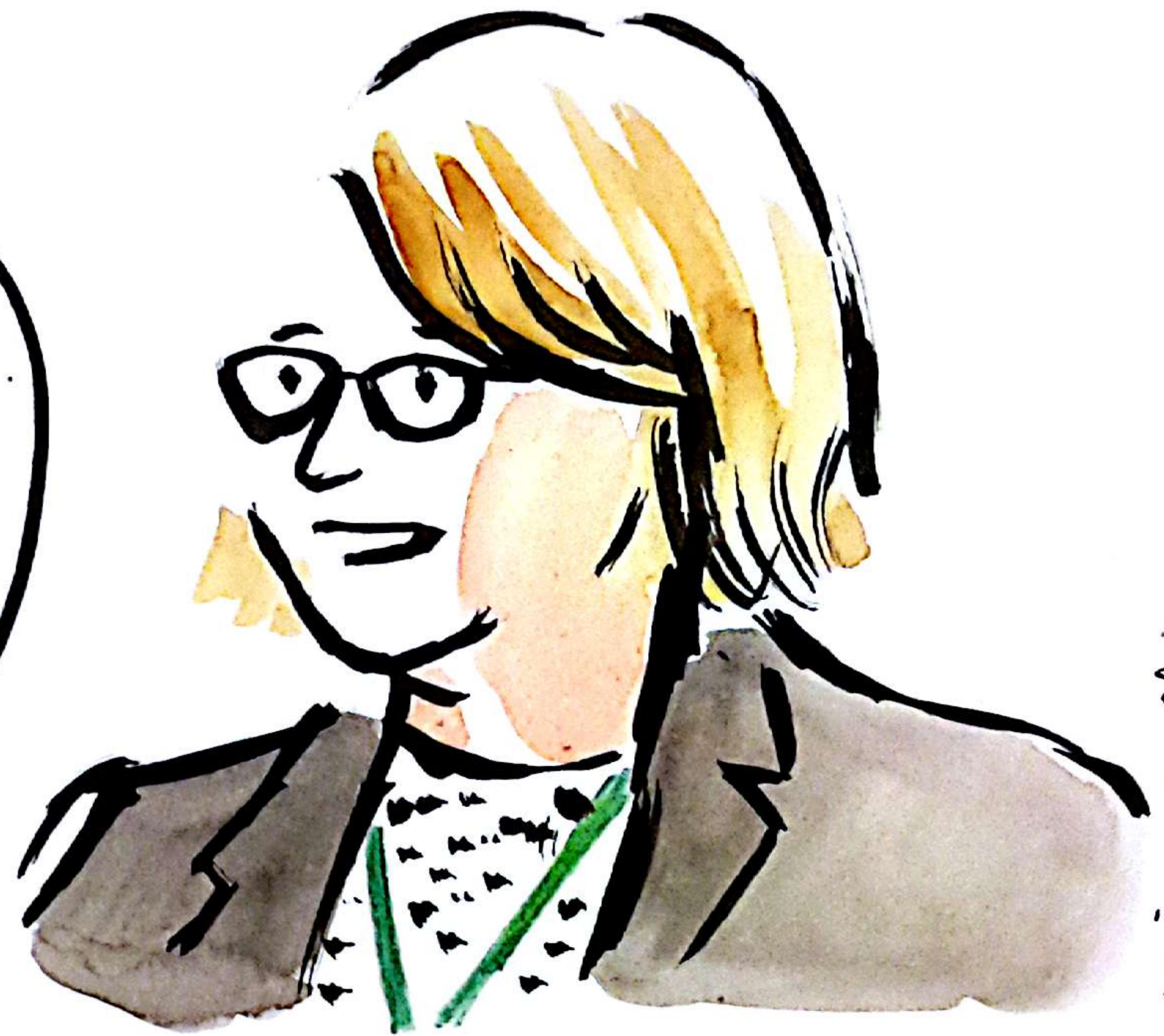




ANNUAL CONVENTION  
for INCLUSIVE GROWTH 2019

1 in 4 citizens  
is at a risk of poverty  
and social exclusion.

There is still  
a lot to do!



Aline Rollin

Katarina Ivanković  
Knežević

Director for Social Affairs,  
DG Employment, Social Affairs and  
Inclusion, European Commission.



ANNUAL CONVENTION  
FOR INCLUSIVE GROWTH 2019

The best way to  
reconnect EU with  
people is civil  
dialogue.

Regarding the social  
agenda, we need to  
choose the most ambitious  
options.



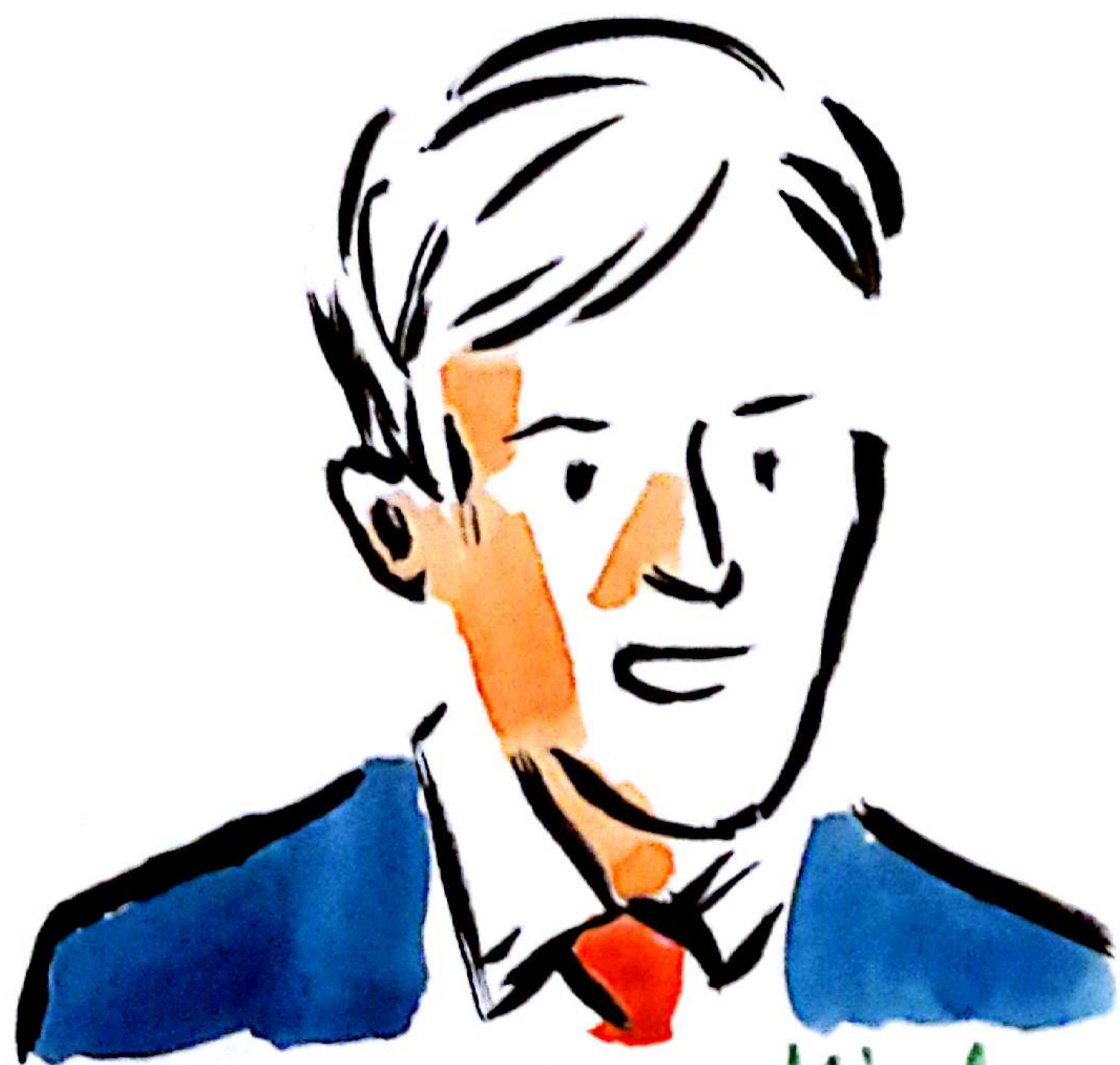
Kélig Puyet

Director of Social Platform

Aline Rollin



ANNUAL CONVENTION  
for INCLUSIVE GROWTH 2019



Mario van Mierlo

Chair, BusinessEurope Social  
Protection Working Group

We as employers  
believe that  
work is the  
future.



ANNUAL CONVENTION  
OF INCLUSIVE GROWTH 2019

“ Human wellbeing is  
of course a value in  
itself and a starting  
point of all policies.”



Alme Rollin

Pasi Korhonen

Director of EU and International  
Affairs, Ministry of Social  
Affairs and Health, Finland.