

Professional and Academic Study Programmes in

Games | Media | Hotel | Facility | Logistics
Built Environment | Tourism | Leisure



The use of transparency tools (such as diploma/certificate supplements and qualifications frameworks) in practice for the purpose of admission to a bachelor's or master's programme.

NHTV – Key figures 2017

Number of bachelor's and master's students:	7.798
Percentage of international students:	13,9%
Number of professional bachelor's programmes:	10
Number of academic bachelor's programmes:	2
Number of professional master's programmes:	4
Number of academic bachelor's programmes:	1

NHTV – Admissions 2017

- +/- 1.000 application packages
- 570 international applicants admitted
- Not admissible: 8%
- Admissible but not selected: 21%
- 400 first year international students registered

Admissions office :

Central Student Office, responsible for:

Check diploma (to be obtained):

- * level EQF/NLQF (based on advice Nuffic)
- * check accreditation
- * check authenticity documents

Check language requirements (IELTS/Toefl/CAE)

NHTV – Admission decision

>> Programmes without selection: direct admission

>> Programmes with selection:

In case applicant meets educational and language requirements:

Academy selects > based on assessment and results /specific subjects

Applicant seeks admission to the NHTV bachelor's programme Tourism Management and has obtained a Bulgarian "Diploma za Sredno Obrazovanie"

Example 1:

Tourism Management,
professional bachelor's
programme – year 1

EQF/NLQF level 4
required

Programme without
selection





Admission decision:

Applicant meets the educational requirements and receives an Admission letter.

Evaluation chart Bulgaria – Source: website Nuffic

Degree or qualification	Dutch equivalent and NLQF-level	EQF level	
<i>Diploma za Sredna Obrazovanie –</i> Диплома за средна образование met een beroepstitel (квалификация). (vocational stream)	HAVO diploma for the general education component	4	4
<u><i>Diploma za Sredno Obrazovanie</i></u> - Диплома за средна образование (academic stream)	VWO diploma*	4+	4
<i>Diploma za Zavarsheno Poluvisshe Obrazovanie with the degree of Specialist</i>	At most an HBO bachelor's degree*	6	6
<u><i>Diplom za visshе obrazovanie na obrazovatelno kvalifikatsionna stepen (Profesionalen) Bakalavr</i></u> – Диплома за висше образование на образователно-квалификационна степен бакалавр	HBO or WO bachelor's degree*	6	6
<u><i>Diploma za visshе obrazovanie na obrazovatelno kvalifikatsionna stepen – Master</i></u> – Диплома за висше образование на образователно-квалификационна степен магистер	HBO or WO master's degree*	7	7

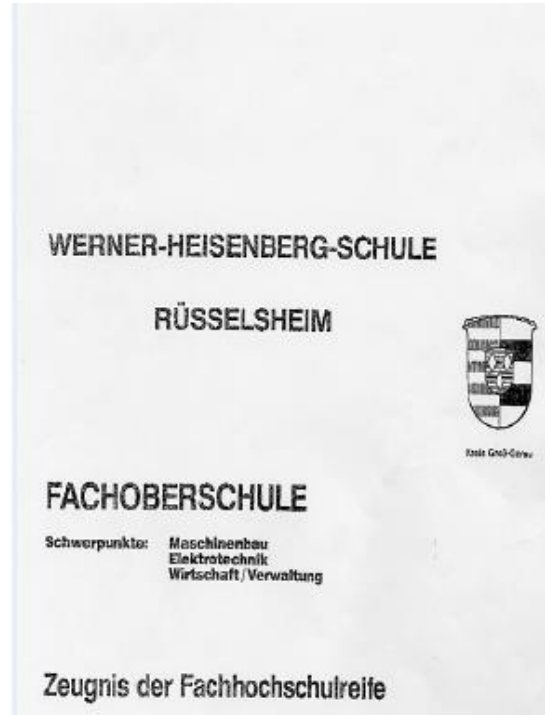
Applicant seeks admission to the NHTV bachelor's programme Leisure Studies and will obtain a German "Fachhochschulreife"

Example 2:

Leisure Studies,
academic bachelor's
programme – year 1

EQF level 4/NLQF level
4+ required

Programme without
selection



Evaluation chart Germany – Source: website Nuffic

Admission decision:

Applicant does not meet the educational requirements.

He/she will receive the offer to apply for an alternative programme, the professional bachelor's programme “International Leisure Management”.



Degree or qualification and EHEA-QF level	EQF level	Dutch equivalent and NLQF level	EQF level	
Realabschluss/Abschlusszeugnis der Klasse 10 der Hauptschule/Sekundarabschluss/ Mittlere Reife		VMBO-T diploma	1-2	
<u>Fachhochschulreife</u>		HAVO diploma	4	
<u>Zeugnis der Allgemeinen Hochschulreife</u>		VWO diploma	4+	
Diplom-Vorprüfungszeugnis (Fachhochschule)		1½-2 years of HBO	5	
Zwischenprüfungszeugnis (wissenschaftliche Hochschule)		2 years of WO	6	
Diplom-Vorprüfungszeugnis (wissenschaftliche Hochschule)		2 years of WO	6	
Vordiplomzeugnis (wissenschaftliche Hochschule)		2 years of WO	6	
Fachhochschuldiplom (Gesamthochschule)	1st	6	HBO bachelor's degree	6
Diplom	1st	6	graad van bachelor in het hbo	6

Applicant seeks admission to the NHTV professional Master's programme Game Technology with a Norwegian *Bachelor in Games & Entertainment Technology*

Example 3:

Game Technology,
professional Master's
programme

EQF/NLQF level 6 required

Programme with selection –
specific knowledge / field of
study required.



Evaluation chart Norway – Source: website Nuffic

Admission decision:

Applicant meets the educational requirements. He is informed about this by the admissions officer and file has been forwarded to the academy to start the assessment / selection procedure



Based on the diploma / diploma supplement and an intake interview, applicant has been admitted by the academy.



Degree or qualification	Dutch equivalent and NLQF level	EQF level
<i>Svennebrev</i> (Journeyman's certificate) or <i>Fagbrev</i> (Trade certificate)	MBO diploma (qualification level 3 or 4)	3/4
<u><i>Vitnemål for Videregående Opplæring</i></u>	VWO or HAVO diploma	4+/4
<i>Høgskolekandidat</i> (university college)	2 years of HBO or Associate Degree	5
<u>Bachelor</u> (university, university college or specialised university institution)	WO or HBO bachelor's degree	6
<u>Master</u> (university, university college or specialised university institution)	WO or HBO master's degree	7
<u>Candidatus</u> followed by the specialisation	WO master's degree	7

Applicant seeks admission to the same programme as in example 3, NHTV professional Master's programme Game Technology, with a Chinese Bachelor degree of Engineering

Example 4:

Game Technology,
professional Master's
programme

EQF/NLQF level 6 required

Programme with selection –
specific knowledge / field of
study required.




Evaluation chart China – Source: website Nuffic

Admission decision:

Applicant meets the educational requirements. He is informed about this by the admissions officer and file has been forwarded to the academy to start the assessment / selection procedure



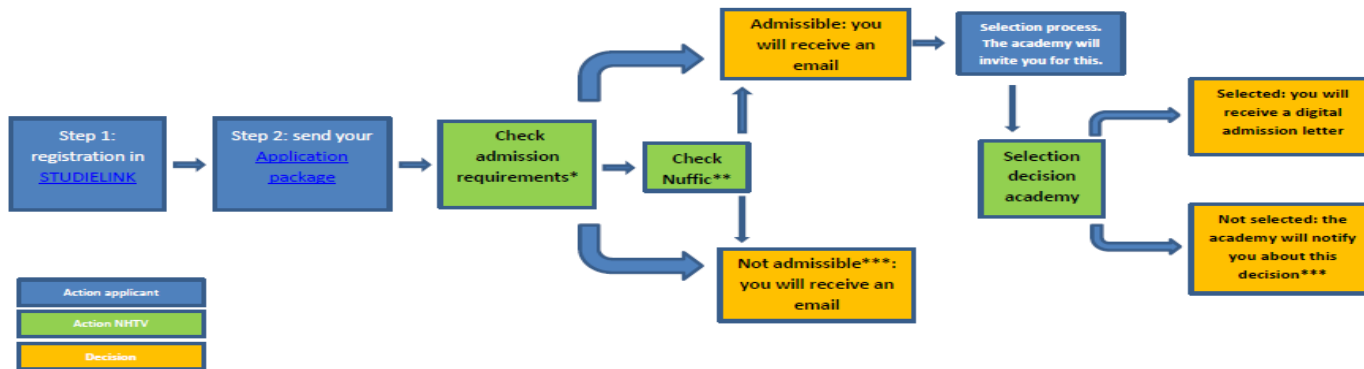
Based on the diploma and diploma supplement and an intake interview, applicant has not been admitted by the academy: 

Degree or qualification	Dutch equivalent and NLQF level		EQF level
Vocational senior middle school graduation certificate (<i>zhongdeng zhuanye xuexiao biye zhengshu</i>) (3 to 4 years)	MBO diploma (qualification level 2 or 3)	2/3	2/3
Senior middle school graduation certificate (<i>gaozhong</i>)	HAVO diploma	4	4
Graduation certificate from a <i>zhuanke</i> programme (2 years)	2 years of HBO	5	5
Graduation certificate from a <i>zhuanke</i> programme (3 years)	3 years of HBO	5	5
Graduation certificate from a bachelor's programme (4 years)	HBO bachelor's degree or 2 years of WO	6	6
Graduation certificate from a bachelor's programme at a Project 211 institution (4 years)	WO or HBO bachelor's degree	6	6
Graduation certificate from a master's programme (2 years)	WO master's degree	7	7

"We feel that you have insufficient experience in game design and technology. This Masters program requires a certain level of these qualities and the ability to develop a project individually. We wish you good luck in the future."

Admission procedure communicated

NHTV's Admission and selection process International applicants Bachelor programmes with selection



***Admission requirements:** NHTV will check if you meet the educational requirements. This includes your previous education as well as the English test requirements. E.g. for admission to a four year professional bachelor programme, your diploma needs to be an equivalent of least a Dutch HAVO diploma. This is based on the information provided by Nuffic. For information on the English test requirements, please find the admission requirements on the NHTV website under your programme of choice.

****Check Nuffic:** NHTV may send your file to [Nuffic](#) for evaluation and advice regarding your previous/current education. According to NHTV's policy Nuffic's advice is always leading in the decision making process.

*****Complaints and grievances?**

Not selected: Not selected by the academy and you do not agree? First contact the academy for more information. If you still do not agree with the decision and you wish to file an official objection, contact the [Dispute resolution committee](#).

Not admissible: You have been informed by Student Office that you are not admissible and you do not agree? Please contact Student Office and explain why you do not agree with this decision, Student Office may provide more information. If you then still do not agree and you wish to file an official objection, you may contact the [Dispute resolution committee](#).