



THE EUROPEAN SOCIAL FUND

Investing in people: key results 2007–2013

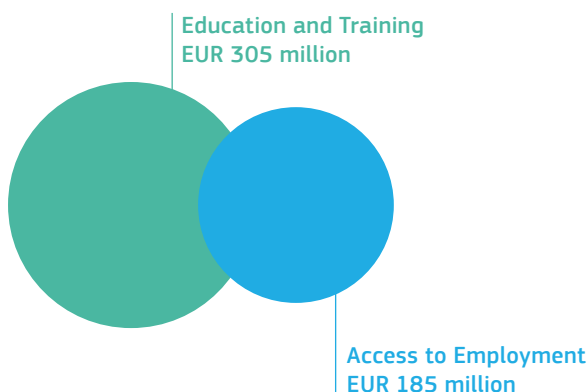


FINANCIAL INFORMATION

255 million

EU contribution (=50% of total budget) (EUR)

Allocated budget by theme*



Estimated implementation rate (%)



* Excluding Technical Assistance

PARTICIPATIONS**

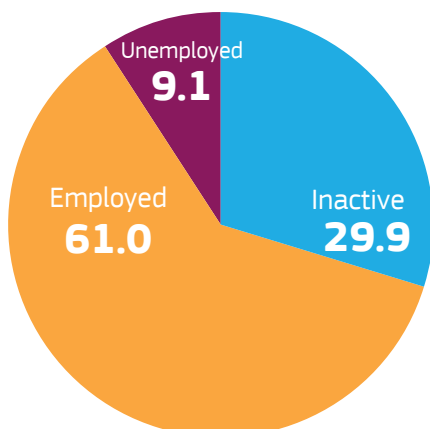
0.1 million



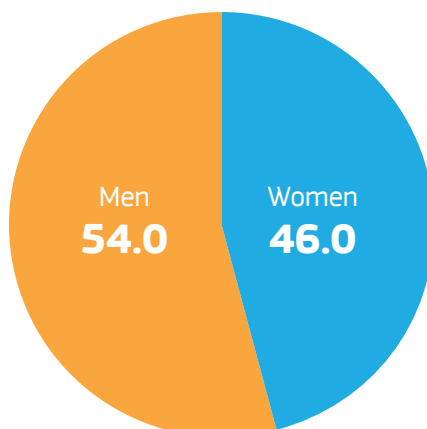
** As one person could participate more than once in ESF operations over time the number of participations is reported. These figures exclude Technical Assistance.

MAIN CHARACTERISTICS OF PARTICIPANTS

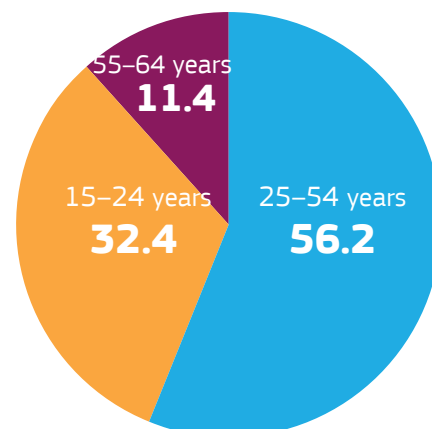
EMPLOYMENT STATUS (%)



GENDER (%)



AGE (%)



MAIN RESULTS*

Other positive results (e.g. improved skills)

54 398

Entities supported

9 238

MACRO-ECONOMIC IMPACT OF THE ESF**

Each 1€ invested in ESF during the 2007–2013 programming period will lead to an estimated 5€ increase in GDP by 2023.



MORE INFORMATION

ESF Ex-post evaluation 2007–2013 Synthesis Report:

ec.europa.eu/social/BlobServlet?docId=16808&langId=en

Staff Working Document Ex-post evaluation of the 2007–2013 ESF Programmes:

ec.europa.eu/social/BlobServlet?docId=16810&langId=en

The ESF in Denmark: ec.europa.eu/esf/main.jsp?catId=376&langId=en

@EU_social

Social Europe



Disclaimer: Figures present the situation for the programming period 2007–2013 implemented up to 2016, as reported by 15th January 2018.

* 11 out of a total of 11 result indicators were aggregated into common categories.

** Source: Updated ESF Ex-post evaluation 2007–2013 Synthesis Report Calculation method: European Commission, JRC (Joint Research Center), RHOMOLO model, ec.europa.eu/jrc/en/rhomolo