



# THE EUROPEAN SOCIAL FUND

## Investing in people: key results 2007–2013

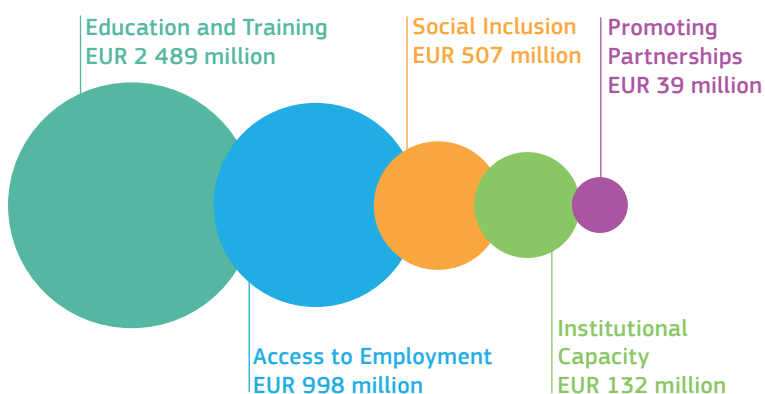


### FINANCIAL INFORMATION

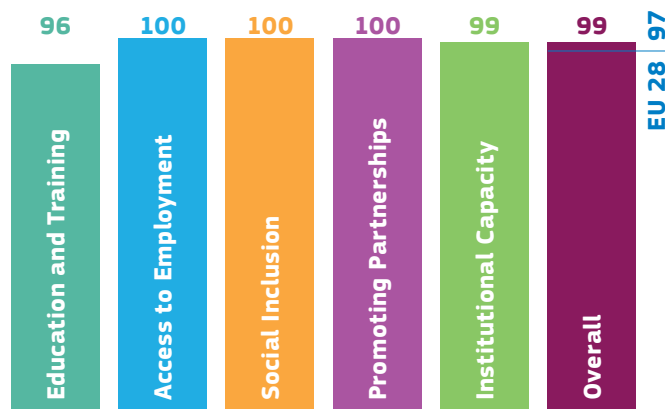
# 3 673 million

EU contribution (=85% of total budget) (EUR)

Allocated budget by theme\*



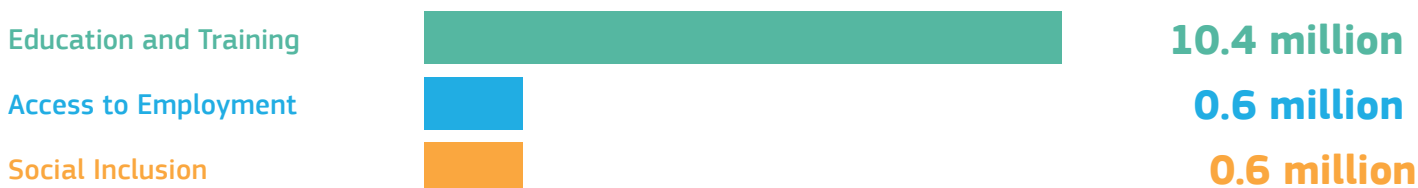
Estimated implementation rate (%)



\* Excluding Technical Assistance

### PARTICIPATIONS\*\*

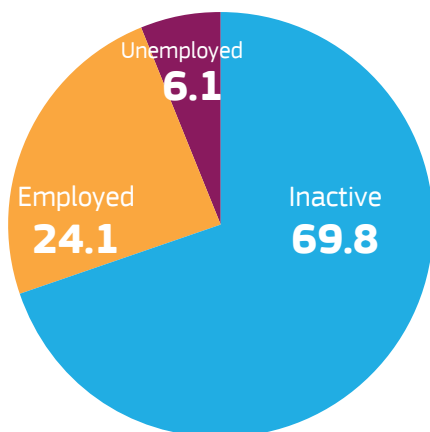
# 11.6 million



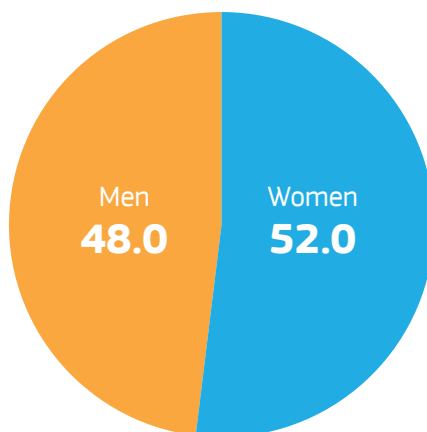
\*\* As one person could participate more than once in ESF operations over time the number of participations is reported. These figures exclude Technical Assistance.

# MAIN CHARACTERISTICS OF PARTICIPANTS

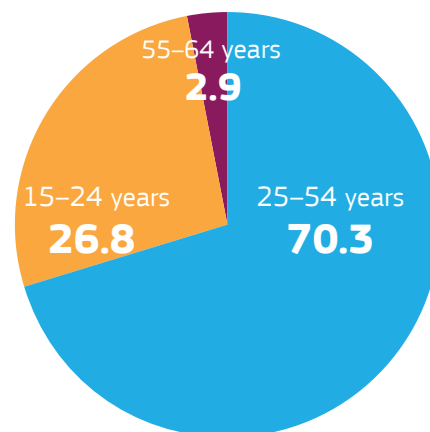
EMPLOYMENT STATUS (%)



GENDER (%)



AGE (%)



## MAIN RESULTS\*

Participants entering employment

**83 240**

Participants gaining qualifications

**2.7 million**

Other positive results (e.g. improved skills)

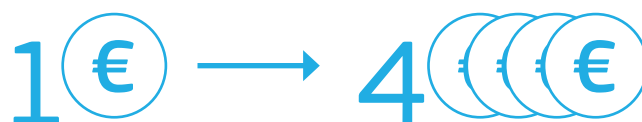
**1.9 million**

Products developed

**8 000**

## MACRO-ECONOMIC IMPACT OF THE ESF\*\*

Each 1€ invested in ESF during the 2007–2013 programming period will lead to an estimated 4€ increase in GDP by 2023.



## MORE INFORMATION

ESF Ex-post evaluation 2007–2013 Synthesis Report:

[ec.europa.eu/social/BlobServlet?docId=16808&langId=en](http://ec.europa.eu/social/BlobServlet?docId=16808&langId=en)

Staff Working Document Ex-post evaluation of the 2007–2013 ESF Programmes:

[ec.europa.eu/social/BlobServlet?docId=16810&langId=en](http://ec.europa.eu/social/BlobServlet?docId=16810&langId=en)

The ESF in Czech Republic: [ec.europa.eu/esf/main.jsp?catId=374&langId=en](http://ec.europa.eu/esf/main.jsp?catId=374&langId=en)

@EU\_social

Social Europe



*Disclaimer: Figures present the situation for the programming period 2007–2013 implemented up to 2016, as reported by 15<sup>th</sup> January 2018.*

\* 16 out of a total of 73 result indicators (and 1 output or impact indicator) were aggregated into common categories. As not all result indicators could be related to one of the categories, the number of results is possibly under-estimated on this aggregated level.

\*\* Source: Updated ESF Ex-post evaluation 2007–2013 Synthesis Report Calculation method: European Commission, JRC (Joint Research Center), RHOMOLO model, [ec.europa.eu/jrc/en/rhomolo](http://ec.europa.eu/jrc/en/rhomolo)