

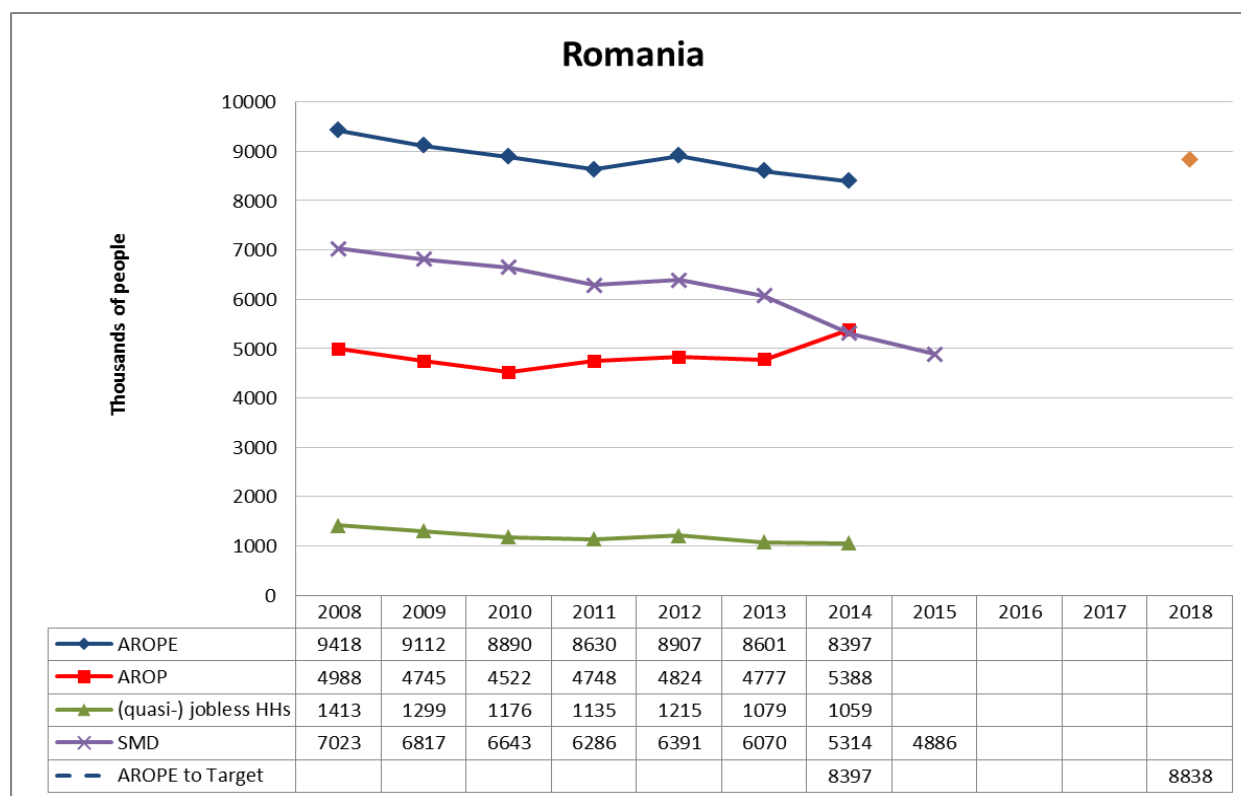
# ROMANIA<sup>1</sup>

## NATIONAL 2020 TARGET FOR THE REDUCTION OF POVERTY AND SOCIAL EXCLUSION

Reduce the number of people at risk of poverty or social exclusion by 580,000

Source: National Reform Programme (2014)

## PROGRESS TOWARDS THE 2020 NATIONAL TARGET FOR THE REDUCTION OF POVERTY AND SOCIAL EXCLUSION

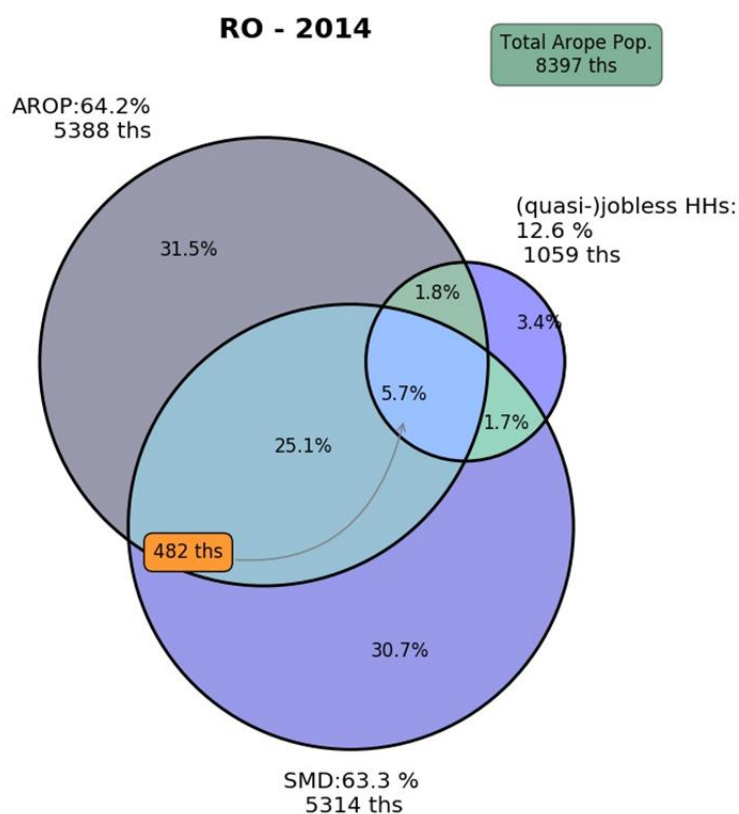


Source: Eurostat (EU-SILC)

Note: i) Progress on the target is monitored on the basis of the EU SILC data with a base year 2008 and target data year 2018; ii) AROPE - at-risk-of-poverty or social exclusion rate; AROP - at-risk-of-poverty rate; (quasi-)jobless HHs - share of population living in (quasi-)jobless households, i.e. very low work intensity (VLWI) households; SMD - severe material deprivation rate; iii) For the at-risk-of-poverty rate (AROP), the income reference year is the calendar year prior to the survey year except for the United Kingdom (survey year) and Ireland (12 months preceding the survey). Similarly, the share of (quasi-) jobless households or the very low work intensity rate (VLWI) refers to the reference year prior to the survey while for the severe material deprivation rate (SMD), the reference is the current year.

<sup>1</sup> Figures in this profile for data obtained from the Eurostat website are based on data extracted around 5 July 2016, unless otherwise stated. Note: There is a general break in series in 2010 for LFS-based indicators and a break in series in 2015 for indicators of severe material deprivation, based on EU-SILC.

## COMPOSITION OF THE POPULATION AT RISK OF POVERTY OR SOCIAL EXCLUSION (2014)



Source: Eurostat (EU-SILC)

RO												EU28	
		2008	2009	2010	2011	2012	2013	2014	2015	Latest year change	Change 2008 to latest year	2013	2014
<b>AROP</b>	% of total AROPE	53.0	52.1	50.9	55.0	54.2	55.5	64.2		8.6 pp	11.2 pp	67.9	70.6
	1000 persons	4988	4745	4522	4748	4824	4777	5388		12.8 %	8.0 %	83433	86196
<b>(quasi-) jobless HHs</b>	% of total AROPE	15.0	14.3	13.2	13.2	13.6	12.5	12.6		0.1 pp	-2.4 pp	33.3	34.2
	1000 persons	1413	1299	1176	1135	1215	1079	1059		-1.9 %	-25.1 %	40910	41810
<b>SMD</b>	% of total AROPE	74.6	74.8	74.7	72.8	71.8	70.6	63.3		-7.3 pp	-11.3 pp	39.2	36.4
	1000 persons	7023	6817	6643	6286	6391	6070	5314	4886	-8.1 %	-30.4 %	48145	44516
<b>AROP and (quasi-) jobless HHs but not SMD</b>	% of total AROPE	2.0	2.2	1.9	2.4	2.4	1.5	1.8		0.4 pp	-0.2 pp	11.2	11.9
	1000 persons	191	202	166	204	212	125	151		20.8 %	-20.9 %	13718	14482
<b>SMD and AROP but not (quasi-) jobless HHs</b>	% of total AROPE	26.8	27.0	26.3	27.7	26.5	25.6	25.1		-0.5 pp	-1.7 pp	11.0	10.5
	1000 persons	2527	2456	2334	2393	2358	2202	2108		-4.3 %	-16.6 %	13485	12794
<b>AROP and SMD and (quasi-) jobless HHs</b>	% of total AROPE	5.5	4.7	4.0	4.4	4.2	4.7	5.7		1.0 pp	0.2 pp	7.6	8.1
	1000 persons	521	429	357	378	372	407	482		18.4 %	-7.5 %	9285	9836
<b>SMD and (quasi-) jobless HHs but not AROP</b>	% of total AROPE	2.6	2.6	2.6	2.2	2.3	2.2	1.7		-0.5 pp	-0.9 pp	3.1	2.8
	1000 persons	248	235	235	187	208	185	143		-22.7 %	-42.3 %	3821	3399

Source: Eurostat (EU-SILC)

## MACRO-ECONOMIC AND LABOUR MARKET CONTEXT

RO									EU28	
	2008	2009	2010	2011	2012	2013	2014	2015	2014	2015
Real GDP growth (y-o-y % change)	8.5	-7.1	-0.8	1.1	0.6	3.5	3.0	3.8	1.4	2.0
Employment growth (y-o-y % change)	0.0	-2.0	-0.3	-0.8	-4.8	-0.9	0.8	-0.9	1.0	1.1
Unemployment rate (% of labour force)	5.6	6.5	7.0	7.2	6.8	7.1	6.8	6.8	10.2	9.4
Long-term unemployment rate (% of labour force)	2.4	2.2	2.4	2.9	3.0	3.2	2.8	3.0	5.0	4.5
Social Protection expenditure (% of GDP)	13.9	16.7	17.1	16.2	15.2	14.6	14.5			

Source: Eurostat (National Accounts, LFS, ESSPROS; National Statistics Office). Data as at 5 July 2016.

## SOCIAL PROTECTION EXPENDITURE

RO									EU28	
		2008	2009	2010	2011	2012	2013	2012	2013	
Social protection expenditure (in % of GDP)	Total	13.9	16.7	17.1	16.2	15.2	14.6	27.5		
	Sickness/Health	3.5	4.1	4.3	4.0	4.0	3.9	8.0		
	Disability	1.4	1.6	1.5	1.4	1.2	1.1	2.0		
	Old age	6.4	7.9	7.9	7.8	7.6	7.3	11.0		
	Survivors	0.6	0.8	0.8	0.7	0.7	0.7	1.6		
	Family/Children	1.5	1.7	1.7	1.7	1.3	1.2	2.3		
	Unemployment	0.2	0.4	0.6	0.3	0.2	0.2	1.5		
	Housing	0.0	0.0	0.0	0.0	0.0	0.0	0.6		
	Social Exclusion n.e.c.	0.3	0.2	0.3	0.3	0.2	0.2	0.5		
	<b>Means-tested</b>									
	Total	0.7	1.0	1.2	0.8	0.6	0.7	3.1		
	Sickness/Health	0.0	0.0	0.0	0.0	0.0	0.0	0.1		
	Disability	0.0	0.0	0.0	0.0	0.0	0.0	0.5		
	Old age	0.0	0.1	0.1	0.1	0.1	0.1	0.6		
	Survivors	0.0	0.1	0.1	0.0	0.1	0.1	0.1		
	Family/Children	0.1	0.2	0.2	0.1	0.1	0.1	0.5		
	Unemployment	0.2	0.4	0.6	0.3	0.2	0.2	0.3		
	Housing	0.0	0.0	0.0	0.0	0.0	0.0	0.6		
	Social Exclusion n.e.c.	0.3	0.2	0.3	0.3	0.2	0.2	0.4		
	<b>Non-means tested</b>									
	Total	13.2	15.7	15.9	15.4	14.6	13.9	24.4		
	Sickness/Health	3.5	4.1	4.3	4.0	4.0	3.9	7.9		
	Disability	1.4	1.6	1.5	1.4	1.2	1.1	1.5		
	Old age	6.4	7.8	7.8	7.7	7.4	7.2	10.4		
	Survivors	0.6	0.7	0.7	0.7	0.6	0.6	1.5		
	Family/Children	1.4	1.5	1.5	1.6	1.2	1.1	1.8		
	Unemployment	0.0	0.0	0.0	0.0	0.0	0.0	1.2		
	Housing									
	Social Exclusion n.e.c.	0.0	0.0	0.0	0.0	0.0	0.0	0.1		

Source: Eurostat (ESSPROS, National Statistics Office). Data as at 5 July 2016.

Note: The total figures of social expenditure include all benefits excluding administrative costs.

## MAIN SOCIAL INDICATORS

### INCOME AND LIVING CONDITIONS

RO	%											EU28	
		2008	2009	2010	2011	2012	2013	2014	2015	Latest year change	Change 2008 to latest year	2013	2014
Total population	At-risk-of-poverty or social exclusion rate	44.2	43.1	41.4	40.3	41.7	40.4	39.5		-0.9 pp	-4.7 pp	24.6	24.4
	At-risk-of-poverty rate	23.4	22.4	21.1	22.2	22.6	22.4	25.4		3.0 pp	2.0 pp	16.7	17.2
	Value of threshold (single HH) - in PPS	1838	2056	2124	2213	2157	2361	2454		3.9 %	16.2 %		
	Value of threshold (2 adults + 2 children younger than 14 years) - in PPS	3860	4318	4459	4648	4530	4959	5153		3.9 %	16.2 %		
	Severe material deprivation rate	32.9	32.2	31.0	29.4	29.9	28.5	25.0	24.6	-0.4 pp	-8.3 pp	9.6	8.9
	Share of people aged 0-59 living in (quasi-) jobless households	8.3	7.7	6.9	6.7	7.4	6.4	6.4		0.0 pp	-1.9 pp	10.9	11.2
	Persistent at-risk-of-poverty rate			18.2	16.7	18.2	17.0	20.2		3.2 pp		10.1	10.4
	At risk-of-poverty gap	32.3	32.0	30.6	31.8	30.9	32.6	35.1		2.5 pp	2.8 pp	23.8	24.6
	Anchored at-risk-of-poverty rate (ref-2008)	23.4	18.2	16.2	17.9	19.9	20.4	22.0		1.6 pp	-1.4 pp	19	19.4
	Impact of social transfers on poverty reduction (excl. pensions)	23.8	23.0	23.3	23.7	19.3	19.4	10.9		-8.5 pp	-12.9 pp	35.8	34.1
	S80/S20	7.0	6.7	6.0	6.2	6.3	6.6	7.2		9.1 %	2.9 %	5	5.2
	Overcrowding rate	56.5	55.3	54.9	54.2	51.6	52.9	52.3		-0.6 pp	-4.2 pp	17.2	16.9
	Housing cost overburden rate	18.7	15.3	15.0	9.9	16.5	15.4	14.9		-0.5 pp	-3.8 pp	11	11.4
	Real change in gross household disposable income	12.7	-6.7	-3.1	-3.1	-3.2	33.0	-21.5				0.0	0.6

Note: For the poverty threshold values, levels are shown in PPS but changes are shown as changes in national currency terms and accounting for inflation.

RO	%											EU28	
		2008	2009	2010	2011	2012	2013	2014	2015	Latest year change	Change 2008 to latest year	2013	2014
Children (0-17)	At-risk-of-poverty or social exclusion rate	51.2	52.0	48.7	49.1	52.2	48.5	50.5		2.0 pp	-0.7 pp	27.7	27.8
	At-risk-of-poverty rate	32.9	32.9	31.3	32.9	34.6	32.1	39.4		7.3 pp	6.5 pp	20.3	21.1
	Severe material deprivation rate	39.2	40.3	36.7	35.8	37.9	34.1	30.4	31.2	0.8 pp	-8.0 pp	11.0	10.4
	Share of people aged 0-17 living in (quasi-) jobless households	6.3	5.6	4.3	4.6	5.1	4.8	5.7		0.9 pp	-0.6 pp	9.5	9.7
	At risk-of-poverty gap	38.6	36.7	35.4	34.7	33.6	38.2	40.5		2.3 pp	1.9 pp	25.2	26.2
	Impact of social transfers on poverty reduction (excl. pensions)	24.2	21.9	20.6	22.0	18.0	19.8	8.8		-11.0 pp	-15.4 pp	41.5	39.0
	Overcrowding rate	73.9	73.4	70.0	70.1	72.6	71.3	71.3		0.0 pp	-2.6 pp	23.1	22.7
RO	%											EU28	
		2008	2009	2010	2011	2012	2013	2014	2015	Latest year change	Change 2008 to latest year	2013	2014
Youth (18-24)	At-risk-of-poverty or social exclusion rate	44.2	42.7	42.1	44.4	45.6	46.8	46.3		-0.5 pp	2.1 pp	31.9	31.9
	At-risk-of-poverty rate	22.9	23.2	23.9	28.2	28.9	30.2	33.2		3.0 pp	10.3 pp	22.6	23.7
	Severe material deprivation rate	32.4	32.6	31.6	32.5	32.1	31.0	27.1	28.0	0.9 pp	-4.4 pp	12.0	11.0
	Share of people aged 18-24 living in (quasi-) jobless households	6.7	5.8	5.9	5.6	5.9	5.4	4.2		-1.2 pp	-2.5 pp	11.0	11.7
	In-work at-risk-of poverty rate	23.3	24.9	23.2	30.7	31.8	29.8	31.3		1.5 pp	8.0 pp	11.3	12.7
	Youth unemployment ratio (15-24)	5.7	6.4	6.9	7.3	6.9	7.1	7.1	6.8	-0.3 pp	1.1 pp	9.9	9.2
	NEET rate	13.4	16.5	20.7	21.6	20.8	21.3	21.4	22.6	1.2 pp	9.2 pp	17.1	16.5
	Housing cost overburden rate	17.0	14.3	15.3	9.7	14.8	16.3	15.8		-0.5 pp	-1.2 pp	13.2	14.3

RO	%											EU28	
		2008	2009	2010	2011	2012	2013	2014	2015	Latest year change	Change 2008 to latest year	2013	2014
Working age (18-64)	At-risk-of-poverty or social exclusion rate	41.0	40.5	39.7	39.0	40.2	39.4	38.0		-1.4 pp	-3.0 pp	25.4	25.4
	At-risk-of-poverty rate	20.0	19.8	19.2	21.0	21.0	21.5	23.7		2.2 pp	3.7 pp	16.4	17.1
	Severe material deprivation rate	29.8	29.6	29.0	27.7	27.9	27.2	23.6	23.0	-0.6 pp	-6.8 pp	10.0	9.2
	Share of people aged 18-59 living in (quasi-) jobless households	8.9	8.4	7.6	7.3	8.1	6.9	6.5		-0.4 pp	-2.4 pp	11.3	11.6
	At risk-of-poverty gap	31.8	32.9	32.0	33.3	33.5	33.3	37.9		4.6 pp	6.1 pp	25.8	26.9
	In-work at-risk-of poverty rate	16.8	17.3	17.0	18.6	18.9	17.7	19.5		1.8 pp	2.7 pp	9.0	9.6
	Impact of social transfers on poverty reduction (excl. pensions)	26.5	25.0	26.2	25.8	21.1	20.1	12.6		-7.5 pp	-13.9 pp	36.7	34.5
	Overcrowding rate	58.5	57.0	57.7	56.7	53.4	54.6	54.2		-0.4 pp	-4.3 pp	18.4	18.1
	Housing cost overburden rate	17.4	14.7	14.6	9.7	15.9	15.0	14.5		-0.5 pp	-2.9 pp	11.4	11.9
RO	%											EU28	
		2008	2009	2010	2011	2012	2013	2014	2015	Latest year change	Change 2008 to latest year	2013	2014
Elderly (65+)	At-risk-of-poverty or social exclusion rate	49.2	43.1	39.9	35.3	35.7	35.0	33.2		-1.8 pp	-16.0 pp	18.2	17.8
	At-risk-of-poverty rate	26.0	21.0	16.7	14.1	15.4	15.0	15.5		0.5 pp	-10.5 pp	13.8	13.8
	Severe material deprivation rate	38.9	33.8	32.4	28.6	28.6	27.5	24.8	23.2	-1.6 pp	-15.7 pp	6.9	6.2
	Relative median income of elderly	0.85	0.93	0.97	1.01	1.01	1.04	1.04		0.0 %	22.4 %	0.93	0.94
	Aggregate replacement ratio	0.49	0.55	0.65	0.64	0.67	0.65	0.64		-1.5 %	30.6 %	0.56	0.56
	Overcrowding rate	25.0	24.4	23.8	23.7	21.5	23.4	21.9		-1.5 pp	-3.1 pp	6.7	6.7
	Housing cost overburden rate	26.2	19.1	16.8	9.7	17.3	15.1	15.2		0.1 pp	-11.0 pp	10.4	10.6

Source: Eurostat (EU-SILC, LFS)

## INVESTING IN CHILDREN

RO	%											EU28	
		2008	2009	2010	2011	2012	2013	2014	2015	Latest year change	Change 2008 to latest year	2013	2014
<b>Overall objective of combating child poverty and social exclusion and promoting child well-being</b>	At-risk-of-poverty or social exclusion (0-17)	51.2	52.0	48.7	49.1	52.2	48.5	50.5		2.0 pp	-0.7 pp	27.7	27.8
	At-risk-of-poverty rate (0-17)	32.9	32.9	31.3	32.9	34.6	32.1	39.4		7.3 pp	6.5 pp	20.3	21.1
	Severe Material Deprivation (0-17)	39.2	40.3	36.7	35.8	37.9	34.1	30.4	31.2	0.8 pp	-8.0 pp	11.0	10.4
	Share of people living in (quasi-) jobless households (% of 0-17 population)	6.3	5.6	4.3	4.6	5.1	4.8	5.7		0.9 pp	-0.6 pp	9.5	9.7
	Persistent at-risk-of-poverty (0-17)			28.6	25.0	31.2	22.7	30.1		7.4 pp		12.3	13.3
<b>Access to adequate resources</b>	in-work poverty rate of people living in households with dependent children	19.5	19.6	19.8	21.9	23.2	20.5	23.3		2.8 pp	3.8 pp	10.6	11.1
	At-risk-of-poverty rate for children (0-17) living in (quasi-) jobless households	82.3	87.9	63.0	76.5	73.1	70.9	91.1		20.2 pp	8.8 pp	64.2	67.2
	At-risk-of-poverty rate for children (0-17) living in households at work	29.5	29.8	29.9	30.7	32.6	30.3	36.2		5.9 pp	6.7 pp	15.5	16.0
	Childcare 1-29 hours per week (% 0-3 years children)	6.0	4.0	4.0	1.0	11.0	5.0	2.0		-3.0 pp	-4.0 pp	13.0	14.0
	Childcare more than 30 hours per week (% 0-3 years children)	2.0	1.0	3.0	1.0	4.0	1.0	1.0		0.0 pp	-1.0 pp	14.0	14.0
	Childcare 1-29 hours per week (% 3 years to mandatory school age children)	37.0	44.0	49.0	30.0	48.0	36.0	37.0		1.0 pp	0.0 pp	35.0	34.0
	Childcare more than 30 hours per week (% 3 years to mandatory school age children)	17.0	19.0	17.0	11.0	11.0	15.0	15.0		0.0 pp	-2.0 pp	47.0	49.0
	Relative median at-risk-of-poverty gap (0-17)	38.6	36.7	35.4	34.7	33.6	38.2	40.5		2.3 pp	1.9 pp	25.2	26.2
	Part time due to care responsibilities (total)	3.0	2.9	2.4	2.6	2.2	2.3	2.4	2.0	-0.4 pp	-1.0 pp	22.3	21.7
	Part time due to care responsibilities (male)											4.0	4.2
	Part time due to care responsibilities (female)	6.0	5.9	5.2	5.0	4.4	4.7	5.0	3.9	-1.1 pp	-2.1 pp	27.8	27.1
	Impact of social transfers (excl. pensions) in reducing child poverty	24.2	21.9	20.6	22.0	18.0	19.8	8.8		-11.0 pp	-15.4 pp	41.5	39.0
Housing cost overburden rate (0-17)	17.5	14.5	15.2	10.7	18.2	17.0	16.0		-1.0 pp	-1.5 pp	10.5	10.7	
<b>Access to quality services</b>	NEET rate (15-19)	9.0	9.7	9.9	10.4	10.3	10.1	10.4	12.0	1.6 pp	3.0 pp	6.7	6.5
	Early leavers from education and training (18-24)	15.9	16.6	19.3	18.1	17.8	17.3	18.1	19.1	1.0 pp	3.2 pp	11.9	11.2
	Self reported unmet need for medical care (16-24)	1.1	1.4	2.6	2.3	2.1	2.2	1.5		-0.7 pp	0.4 pp	1.5	1.5
	Infant mortality rate	11.0	10.1	9.8	9.4	9.0	9.2	8.4		-0.8 pp	-2.6 pp		3.7
	Severe housing deprivation (0-17)	45.8	44.9	41.1	38.5	36.9	35.5	34.6		-0.9 pp	-11.2 pp	7.5	7.5
	Overcrowding rate (0-17)	73.9	73.4	70.0	70.1	72.6	71.3	71.3		0.0 pp	-2.6 pp	23.1	22.7

Source: Eurostat (EU-SILC, LFS, Mortality data)



LONG-TERM ADEQUACY OF PENSIONS: THEORETICAL REPLACEMENT RATES (2013-2053)

TRR case		Net				Gross			
		2013		2053		2013		2053	
		Men	Women	Men	Women	Men	Women	Men	Women
<b>Average Earnings</b>	Base case I: 40 years up to age 65	73.1	62.1	41.1	43.9	55.4	45.9	31.8	34.0
	Base case II: 40 years up to the SPA	73.1	62.1	41.1	40.1	55.4	45.9	31.8	31.0
	Increased SPA: from age 25 to SPA	71.3	59.5	41.1	39.1	52.4	41.2	31.8	30.2
	AWG career length case	68.1	57.1	41.1	39.1	50.4	40.9	31.5	30.0
	Longer career I: from age 25 to 67			45.8				35.5	
	Shorter career I: from age 25 to 63			40.5				31.3	30.2
	Longer career I: from age 25 to SPA+2			45.8	43.9			35.5	34.0
	Shorter career I: from age 25 to SPA-2			40.5	n.a.			31.3	n.a.
	Career break – unemployment: 1 year			40.0	33.1			31.4	29.4
	Career break – unemployment: 2 years			38.0	33.1			30.5	29.3
	Career break – unemployment: 3 years			36.0	31.6			29.7	27.7
	Career break due to child care: 0 year				39.1				30.2
	Career break due to child care: 1 year				39.1				30.2
	Career break due to child care: 2 years				39.1				30.2
	Career break due to child care: 3 years				39.1				30.2
	Short career (30 year career)			22.9	20.7			23.6	22.0
	Early retirement due to unemployment			33.4				29.1	
	Early retirement due to disability			41.1	36.4			31.8	31.6
	Indexation: 10 years after retirement			33.5				27.0	
<b>Low Earnings (66%)</b>	Base case I: 40 years up to age 65	84.1	72.3	43.6	46.6	62.7	51.8	33.8	36.1
	Base case II: 40 years up to the SPA	84.1	72.3	43.6	41.8	62.7	51.8	33.8	32.4
	Increased SPA: from age 25 to SPA	81.2	67.4	43.6	40.8	62.2	56.3	33.8	31.6
	AWG career length case	78.7	66.2	43.6	40.8	58.3	53.6	33.5	31.3
	Longer career I: from age 25 to 67			49.2				38.1	
	Shorter career I: from age 25 to 63			42.4				32.8	
	Longer career I: from age 25 to SPA+2			49.2	41.4			38.1	36.1
	Shorter career I: from age 25 to SPA-2			42.4	n.a.			32.8	n.a.
	Career break – unemployment: 1 year			42.5	36.4			33.4	30.7
	Career break – unemployment: 2 years			40.4	36.4			32.5	30.6
	Career break – unemployment: 3 years			38.3	35.0			31.6	29.0
	Career break due to child care: 0 year				40.8				31.6
	Career break due to child care: 1 year				40.8				31.6
	Career break due to child care: 2 years				40.8				31.6
	Career break due to child care: 3 years				40.8				31.6
	Short career (30 year career)	77.3	67.2	24.6	21.7	58.1	48.3	25.4	23.0
	Early retirement due to unemployment			34.5				30.0	
	Early retirement due to disability			43.6	38.4			33.8	31.6
	Pension rights of surviving spouses				40.8				31.6
<b>High</b>	Base case I: 40 years up to age 65	61.4	51.2	16.7		47.5	38.6	17.4	
	Base case II: 40 years up to the SPA	61.4	51.2	21.3	20.8	47.5	38.6	17.1	11.6

Source: Joint SPC/EC 2015 report on Pension Adequacy in the European Union (2013-2053)



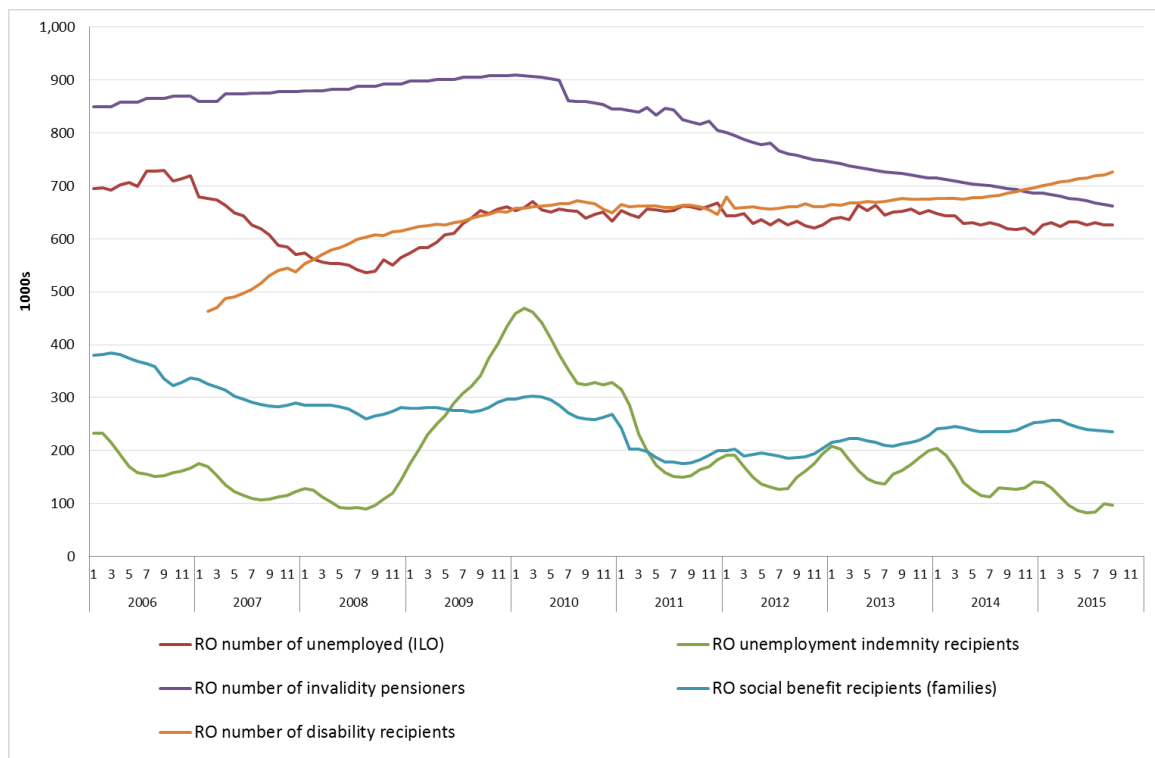
## HEALTH CARE SYSTEMS

RO								EU28	
	2008	2009	2010	2011	2012	2013	2014	2013	2014
Healthy life years at birth (years) - male	60.0	59.8	57.3	57.4	57.6	58.6	59.0	61.4	61.4
Healthy life years at birth (years) - female	62.9	61.7	57.5	57.0	57.7	57.9	59.0	61.5	61.8
Healthy life years at 65 (years) - male	7.9	7.2	5.9	5.4	5.9	5.8	5.9	8.5	8.6
Healthy life years at 65 (years) - female	8.0	7.1	5.1	4.7	5.1	5.2	5.7	8.6	8.6
Life expectancy at birth (years) - male	69.7	69.8	70.0	70.8	70.9	71.6	71.4	77.8	78.1
Life expectancy at birth (years) - female	77.5	77.7	77.7	78.2	78.1	78.7	78.7	83.3	83.6
Life expectancy at 65 (years) - male	14.2	14.3	14.2	14.5	14.4	14.7	14.7	17.9	18.2
Life expectancy at 65 (years) - female	17.7	17.8	17.6	17.8	17.7	18.1	18.1	21.3	21.6
Self reported unmet need for medical examination or treatment	10.8	8.5	10.8	11.9	10.7	10.4	9.3	3.6	3.6
Self-perceived health (%)	69.3	70.2	70.7	69.4	70.3	70.5	70.8	67.2	67.4
Total health care expenditure per capita (PPS)	657.1	644.1	727.4	709.4	748.0				
Total health care expenditure (% of GDP)	5.4	5.7	6.0	5.6	5.6				

Source: Eurostat (EU-SILC, Mortality data, SHA,

Note: Self-perceived health refers to the percentage of the population reporting either good or very good health.

## TRENDS IN TAKE-UP OF SELECTED BENEFITS<sup>2</sup>



<sup>2</sup> These data have been collected by the SPC in the context of monitoring the social impact of the crisis. It includes only a selection of benefits which have been considered most reactive to the crisis. The number of unemployed (standard definition by the ILO) are given as background.

RO	Unemployment
<b>definition</b>	Unemployment according to ILO definition - Total
<b>unit</b>	Thousands of persons unemployed - seasonally adjusted
<b>source</b>	Source: Eurostat
<b>link</b>	<a href="http://ec.europa.eu/eurostat/web/main">http://ec.europa.eu/eurostat/web/main</a>
	Unemployment indemnity
<b>definition</b>	Number of unemployment indemnity recipients (indemnizație de șomaj), according to the Law No. 76/2002 regarding the unemployment insurance system and employment stimulation, with subsequent amendments
<b>unit</b>	Thousands of persons beneficiaries of unemployment indemnity
<b>source</b>	National Agency for Employment, Romania
<b>link</b>	<a href="http://www.mmuncii.ro/j33/index.php/ro/transparenta/statistici/date-statistice">http://www.mmuncii.ro/j33/index.php/ro/transparenta/statistici/date-statistice</a>
	Social assistance benefit/means-tested minimum income
<b>definition</b>	The recipients of social assistance benefit (ajutor social) are families earning less than a certain amount set depending on the family structure, as to the Law no.416/2001 on guaranteed minimum income with subsequent amendments. The Law provides a set of assets that may exclude some families from benefitting of social income. The social assistance benefit is equal to the difference between the amount set by the Law and the family income.
<b>unit</b>	Thousands of families recipients of social benefit for ensuring the minimum guaranteed income
<b>source</b>	Ministry of Labour, Family, Social Protection and Elderly, Romania
<b>link</b>	<a href="http://www.mmuncii.ro/j33/index.php/ro/transparenta/statistici/date-statistice">http://www.mmuncii.ro/j33/index.php/ro/transparenta/statistici/date-statistice</a>
<b>comment</b>	
	Invalidity pension
<b>definition</b>	A person who is certified as being incapable for suitable fulltime or regular part-time employment due to a serious disease or bodily or mental impairment is entitled to an Invalidity pension (pensie de invaliditate), subject to the relative contribution conditions, as to the Law no. 263/2010 on the Unitary System of Public Pensions, with subsequent amendments.
<b>unit</b>	thousands of invalidity pensioners
<b>source</b>	National House of Public Pensions, Romania
<b>link</b>	<a href="http://www.mmuncii.ro/j33/index.php/ro/transparenta/statistici/date-statistice">http://www.mmuncii.ro/j33/index.php/ro/transparenta/statistici/date-statistice</a>
	Disability benefit
<b>definition</b>	Definition of persons with disabilities: persons which, due to social environment inadequate to their physical, sensory, psychic, mental and/or associated impairment, are totally prevented or have limited access with equal chances to the society life, needing protection measures for social integration and inclusion, as to the Law no.448/2006 on social protection and promotion of the persons with disabilities rights, with subsequent amendments.
<b>unit</b>	thousands recipients of complementary personal budget for persons with severe, major or average disability (buget personal complementar pentru persoane cu handicap grav, accentuat sau mediu)
<b>source</b>	Ministry of Labour, Family, Social Protection and Elderly; National Agency for Social Payments and Inspection, Romania
<b>link</b>	<a href="http://www.mmuncii.ro/j33/index.php/ro/transparenta/statistici/buletin-statistic">http://www.mmuncii.ro/j33/index.php/ro/transparenta/statistici/buletin-statistic</a>

**comment**

Note: one person may receive simultaneously the disability benefit and invalidity pension

## SUMMARY TABLE OF MAIN SOCIAL TRENDS

Group	Indicator	RO										EU27		
		2008	2009	2010	2011	2012	2013	2014	2015	change 2013-2014 (2014-2015 for LFS-based figures)	change 2008-2014 (2008-2015 for LFS-based figures)	2014 (2015 for LFS-based figures)	latest year change	change 2008 to latest year
Europe 2020	At risk of poverty or social exclusion (in %)	44.2	43.1	41.4	40.3	41.7	40.4	39.5		-0.9 pp	-4.7 pp	24.4	-0.1 pp	0.7 pp
	At-risk-of-poverty rate (in %)	23.4	22.4	21.1	22.2	22.6	22.4	25.4		3.0 pp	2.0 pp	17.2	0.5 pp	0.7 pp
	At-risk-of-poverty threshold for a single person household (levels in pps, changes as real change in national currency in %)	1838	2056	2124	2213	2157	2361	2454		3.9 %	16.2 %	n.a.	n.a.	n.a.
	Severe material deprivation rate (in %)	32.9	32.2	31.0	29.4	29.9	28.5	25.0		-3.5 pp	-7.9 pp	8.9	-0.7 pp	0.4 pp
	Population living in (quasi-) jobless households (in %)	8.3	7.7	6.9	6.7	7.4	6.4	6.4		0.0 pp	-1.9 pp	11.1	0.3 pp	1.9 pp
Intensity of poverty risk	Relative median at-risk-of-poverty gap (in %)	32.3	32.0	30.6	31.8	30.9	32.6	35.1		2.5 pp	2.8 pp	24.6	0.8 pp	2.7 pp
Persistence of poverty risk	Persistent at-risk-of-poverty rate (in %)	n.a.	n.a.	18.2	16.7	18.2	17.0	20.2		3.2 pp	n.a.	10.3	0.3 pp	1.7 pp
Income inequalities	Income quintile ratio (S80/S20)	7.0	6.7	6.0	6.2	6.3	6.6	7.2		9.1 %	2.9 %	5.2	4.0 %	4.0 %
Child poverty and social exclusion	At-risk-of poverty or social exclusion rate of children (% of people aged 0-17)	51.2	52.0	48.7	49.1	52.2	48.5	50.5		2.0 pp	-0.7 pp	27.7	0.0 pp	1.3 pp
Effectiveness of social protection system	Impact of social transfers (excl. pensions) on poverty reduction (%)	23.8	23.0	23.3	23.7	19.3	19.4	10.9		-8.5 pp	-12.9 pp	34.1	-1.4 pp	-0.7 pp
	Impact of social transfers (incl. pensions) on poverty reduction (%)	51.0	53.5	55.5	55.4	54.9	53.5	47.7		-5.8 pp	-3.3 pp	61.44	-1.0 pp	0.8 pp
	At-risk-of-poverty rate for the population living in (quasi-) jobless households	50.4	48.6	44.6	51.6	48.1	49.3	59.7		10.4 pp	9.3 pp	58.1	2.0 pp	2.4 pp
Social consequences of labour market	In-work at-risk-of poverty rate (in %)	16.8	17.3	17.0	18.6	18.9	17.7	19.5		1.8 pp	2.7 pp	9.6	0.6 pp	1.1 pp
	Long-term unemployment rate (in %)	2.4	2.2	2.4	2.9	3.0	3.2	2.8	3.0	0.2 pp	0.6 pp	4.5	-0.5 pp	2.0 pp
Youth exclusion	Early school leavers (in %)	15.9	16.6	19.3	18.1	17.8	17.3	18.1	19.1	1.0 pp	3.2 pp	11	-0.3 pp	-3.8 pp
	Youth unemployment ratio (15-24)	5.7	6.4	6.9	7.3	6.9	7.1	7.1	6.8	-0.3 pp	1.1 pp	8.4	-0.8 pp	1.5 pp
	NEETs (15-24)	11.6	13.9	16.6	17.5	16.8	17.0	17.0	18.1	1.1 pp	6.5 pp	12	-0.5 pp	1.1 pp
Active ageing	Employment rate of older workers (55-64) in %	43.1	42.6	40.7	39.9	41.6	41.8	43.1	41.1	-2.0 pp	-2.0 pp	53.4	1.5 pp	7.9 pp
Pension adequacy	At risk of poverty or social exclusion for the elderly (65+) in %	49.2	43.1	39.9	35.3	35.7	35.0	33.2		-1.8 pp	-16.0 pp	17.7	-0.4 pp	-5.6 pp
	Median relative income of elderly people	0.85	0.93	0.97	1.01	1.01	1.04	1.04		0.0 %	22.4 %	0.94	1.1 %	10.6 %
	Aggregate replacement ratio	0.49	0.55	0.65	0.64	0.67	0.65	0.64		-1.5 %	30.6 %	0.56	0.0 %	14.3 %
Health	Self reported unmet need for medical care	10.8	8.5	10.8	11.9	10.7	10.4	9.3		-1.1 pp	-1.5 pp	3.6	0.0 pp	0.5 pp
	Healthy life years at 65 - males	7.9	7.2	5.9	5.4	5.9	5.8	5.9		1.7 %	-25.3 %	n.a.	n.a.	n.a.
	Healthy life years at 65 - females	8.0	7.1	5.1	4.7	5.1	5.2	5.7		9.6 %	-28.7 %	n.a.	n.a.	n.a.
Access to decent housing	Housing cost overburden rate	18.7	15.3	15.0	9.9	16.5	15.4	14.9		-0.5 pp	-3.8 pp	11.4	0.3 pp	0.9 pp
Evolution in real household disposable income	Real change in gross household disposable income (in %)	12.7	-6.7	-3.1	-3.1	-3.2	33.0	-21.5	n.a.	-21.5 %	-11.5 %	n.a.	n.a.	n.a.

Note: For the poverty threshold values, levels are shown in PPS but changes are shown as changes in national currency terms and accounting for inflation. For consistency with the main SPPM dashboard latest changes refer to 2013-2014 for EU-SILC based indicators and 2014-2015 for LFS-based indicators, while changes since 2008 refer to 2008-2014 and 2008-2015 respectively.

## KEY SOCIAL CHALLENGES AND GOOD SOCIAL OUTCOMES, ROMANIA

Social policy area	Key social challenge	Good social outcome
1. Preventing poverty and social exclusion through inclusive labour markets, adequate and sustainable social protection and high quality services	<p>Rate of poverty and social exclusion is significantly higher than the EU average.</p> <p>Poverty gap and persistent poverty are significantly higher than the EU average.</p> <p>Inequality (S80/S20) is significantly higher than the EU average and rising.</p> <p><i>Roma population has lower employment, health, and educational attainment and higher poverty levels.</i></p> <p><i>Rural areas are far behind urban areas in terms of poverty reduction, employment and education, and access to services.</i></p>	Share of people in (quasi-)jobless households <sup>3</sup> is significantly better than the EU average
2. Breaking the intergenerational transmission of poverty – tackling child poverty	<p>Child poverty and social exclusion is significantly higher than the EU average.</p>	
3. Active inclusion – tackling poverty in working age	<p>In-work poverty is the highest in the EU.</p> <p>Impact of social transfers is significantly below the EU average.</p> <p><i>The cooperation between the Public Employment Services, social services and municipalities is weak.</i></p> <p><i>The adequacy and take-up of unemployment benefits are low.</i></p>	
4. Elderly poverty/adequate income and living conditions of the elderly	<p>Elderly poverty and social exclusion risk is considerably higher than the EU average, although severe material deprivation shows a slight positive development.</p> <p><i>The equalisation of the pension age for men and women is still pending, sustaining the gender pension gap.</i></p>	

<sup>3</sup> This is equivalent to the 'very low work intensity' (VLWI) indicator published by Eurostat.

<p>5. Health</p>	<p>Life expectancy at birth and at 65 are significantly worse than the EU average.</p> <p>Potential years of life lost, preventable and amenable mortality are significantly worse than the EU average.</p> <p>Unmet need for medical care is significantly worse than the EU average, as well as the subcomponents cost and distance, despite significantly positive development over the past three years.</p> <p><i>Informal payments are a barrier to access.</i></p> <p><i>Health workforce shortage is a serious issue.</i></p>	<p>Healthy life years at birth is around the EU average but shows some positive development.</p>
<p>6. Other key issues</p>	<p><i>The rate of poverty or social exclusion for persons with disabilities is one of the highest in the EU.</i></p>	