



EUROPEAN UNION



EU
MISSIONS

RESTORE OUR OCEAN AND WATERS



State of play on marine protected areas in the Baltic sea basin



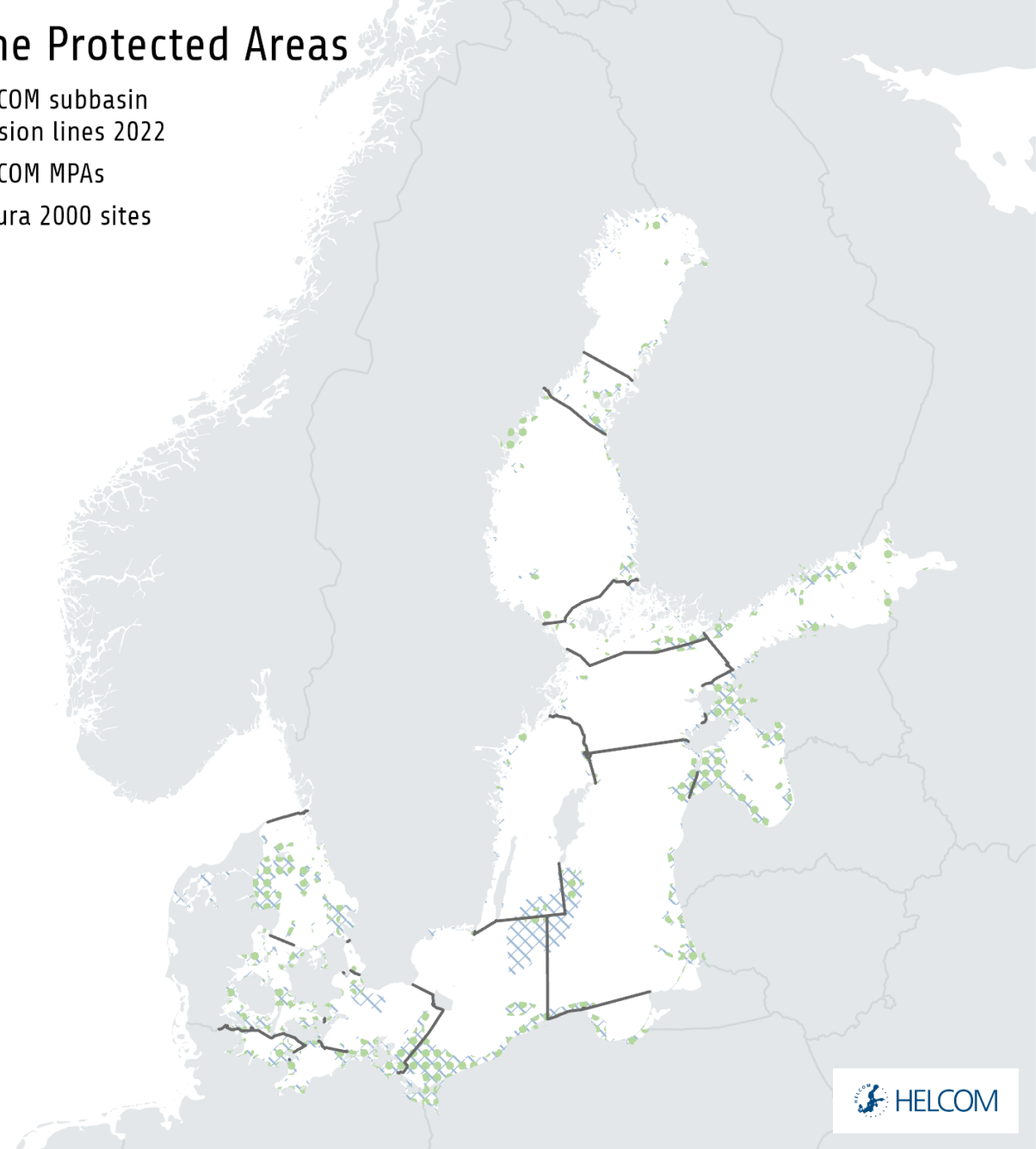
Jannica Haldin, HELCOM Deputy Executive Secretary

HELCOM MPA Network

- As of December 2022, the Baltic MPA network covers approximately 16.5% of the Baltic Sea
- Included in this are 178 HELCOM MPAs, amounting to about 13.2% of the Baltic Sea.
- It took 30 years to get here, now we need to double it in 7 years.

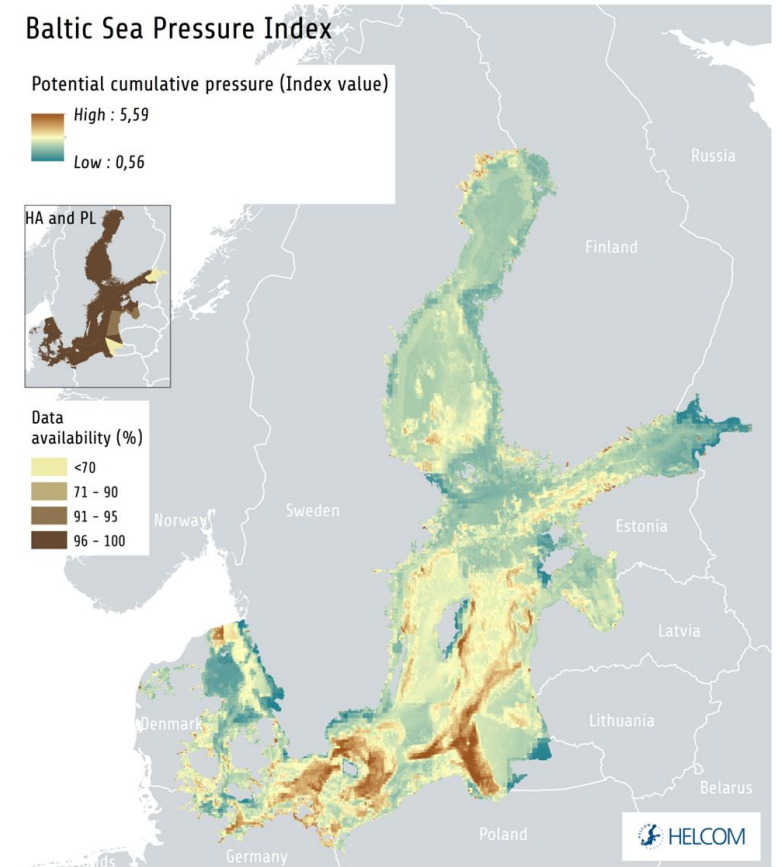
Marine Protected Areas

- HELCOM subbasin division lines 2022
- HELCOM MPAs
- Natura 2000 sites



What bottlenecks/needs/challenges is the Baltic Sea experiencing with regards to MPAs?

- **Incomplete knowledge base for decision making and designation**, including distribution of biodiversity across the Baltic Sea, the function and role of biodiversity elements in increasing resilience, supply of ecosystem services and ecosystem function and the effect of pressures and human activities on biodiversity
- **Gaps in governance**, including too narrow scope of protection, lack of strict protection, inconsistent use, or lack, of identified nature values, protection objectives and targets. Differing and inconsistent legislation and interpretations. Lack of a concrete network approach and gaps in coherence of the existing MPA network. Unclear role of OECM in spatial protection.
- **Insufficient use of adaptive management**, including insufficient capacity of managers, lack of, or ineffective, management plans, insufficient measures, insufficient enforcement and lack of compliance assurance and insufficient monitoring. Lack of tracking progress and inadequate measuring the level of success across each aspect of the protection cycle. The need to address the above on a Baltic wide scale to ensure comparability and compatibility across countries and by extension improved ecological relevance of the results and the consequent national implementation.



What opportunities and solutions are there?

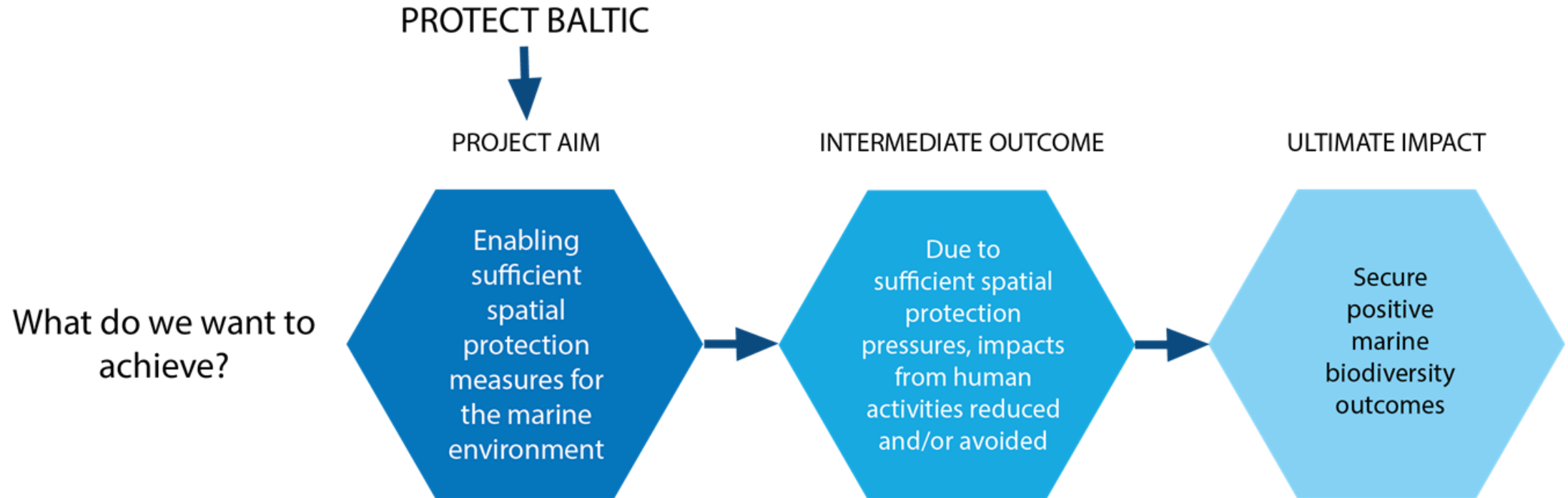
- No MPA is an island, and neither are the countries bordering the sea.
- Address identified gaps cohesively and holistically, at an ecologically relevant level (i.e. transboundary).
- Build a robust and applicable region wide framework for protection, one that is adaptable, transparent and which supports data driven and strategic decision making when it comes to protection.



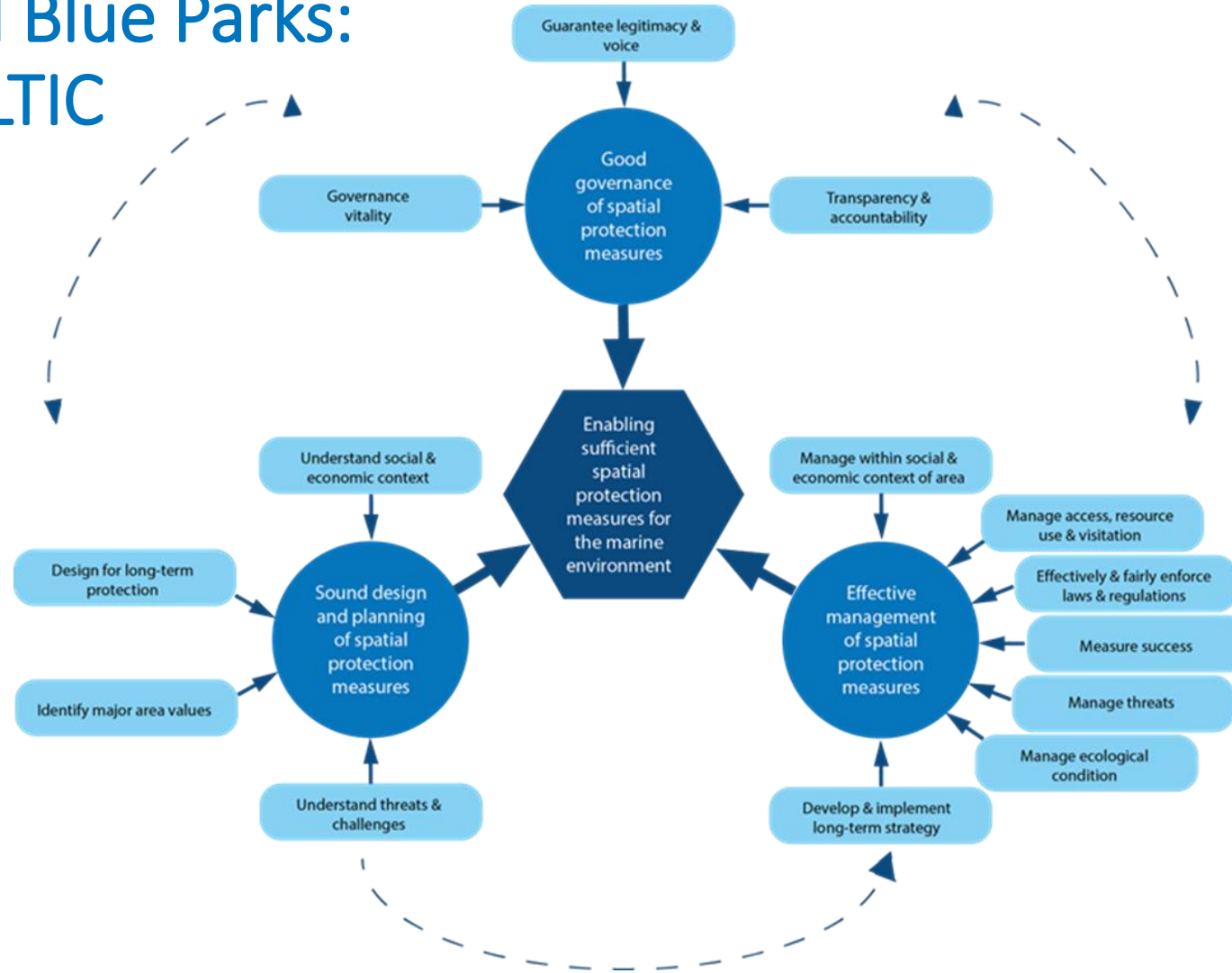


HELCOM and Blue Parks:

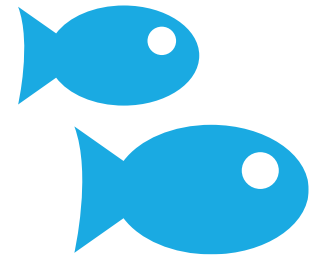
HELCOM and Blue Parks: PROTECT BALTIC



HELCOM and Blue Parks: PROTECT BALTIC



Thank you for your attention!



<https://helcom.fi/>

<https://protectbaltic.eu/>