

The EU Regional Competitiveness Index 2.0 - 2022 edition

ISBN 978-92-68-00298-8 doi:10.2776/295102 (print)

ISBN 978-92-76-58866-5 doi:10.2776/313889 (PDF)

Luxembourg: Publications Office of the European Union, 2023

Corrigendum 11 May 2023

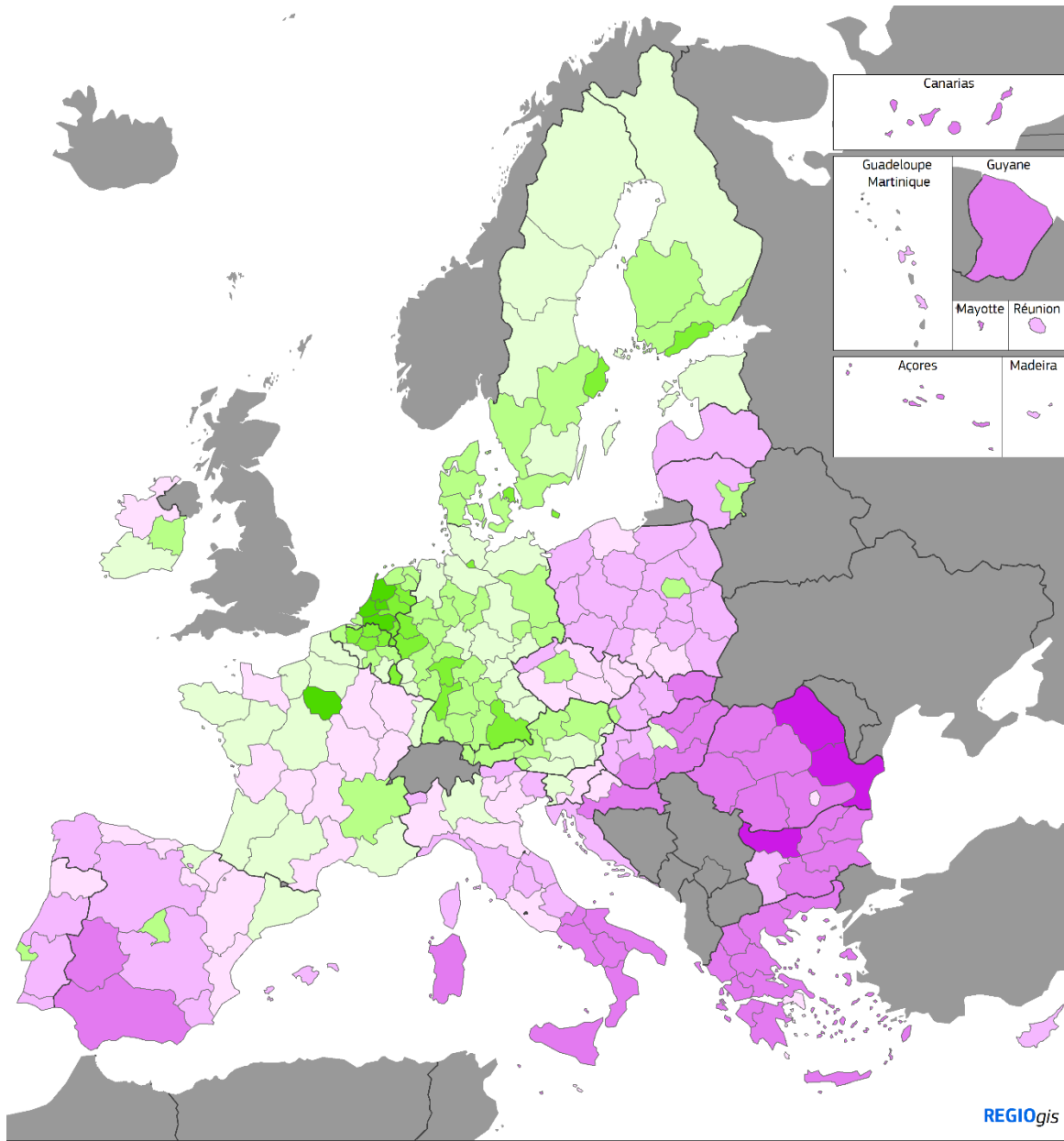
Due to a correction in data of three indicators used in the Labour Market Efficiency pillar ([i] employment rate, excluding the agricultural sector; [ii] unemployment rate; [iii] gender gap in unemployment rate), the overall scores, sub-indices and pillars of the Regional Competitiveness Index 2.0, 2022 edition have been recalculated in May 2023. The revision resulted in minor differences with the scores published in March 2023. In the specific:

- In the overall RCI score, no region previously classified as being above the EU average moved to being below EU average, and the vice-versa.
- In the Efficiency sub-index, of 234 regions, 5 moved from being above/below EU average and the vice-versa
 - Picardie (FR) and Aquitaine (FR) moved from being just above to being just below the EU average. For Aquitaine, at the 0-digit level, the two scores are unchanged (at 100).
 - Luxembourg (BE), Haute-Normandie (FR) and Länsi-Suomi (FI) moved from being below to being above EU average.
- Ranking in Table 4: the list of top10 and bottom 10 regions remains unchanged.
- The list of fast growing regions in terms of overall RCI, between 2019 and 2022 remains unchanged.

List of revised charts/maps/tables: Map2, Map3 (middle), Map4, Map5, Figure 2, Figure 3 (middle), Figure 6 and Table 4. All remaining charts/maps/tables were unaffected by the revision.

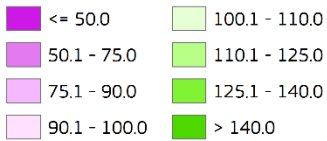
For any questions, please contact: REGIO-B1-PAPERS@ec.europa.eu

Map 2: Regional Competitiveness Index 2.0, 2022 edition



Regional Competitiveness Index 2.0, 2022 edition

Index

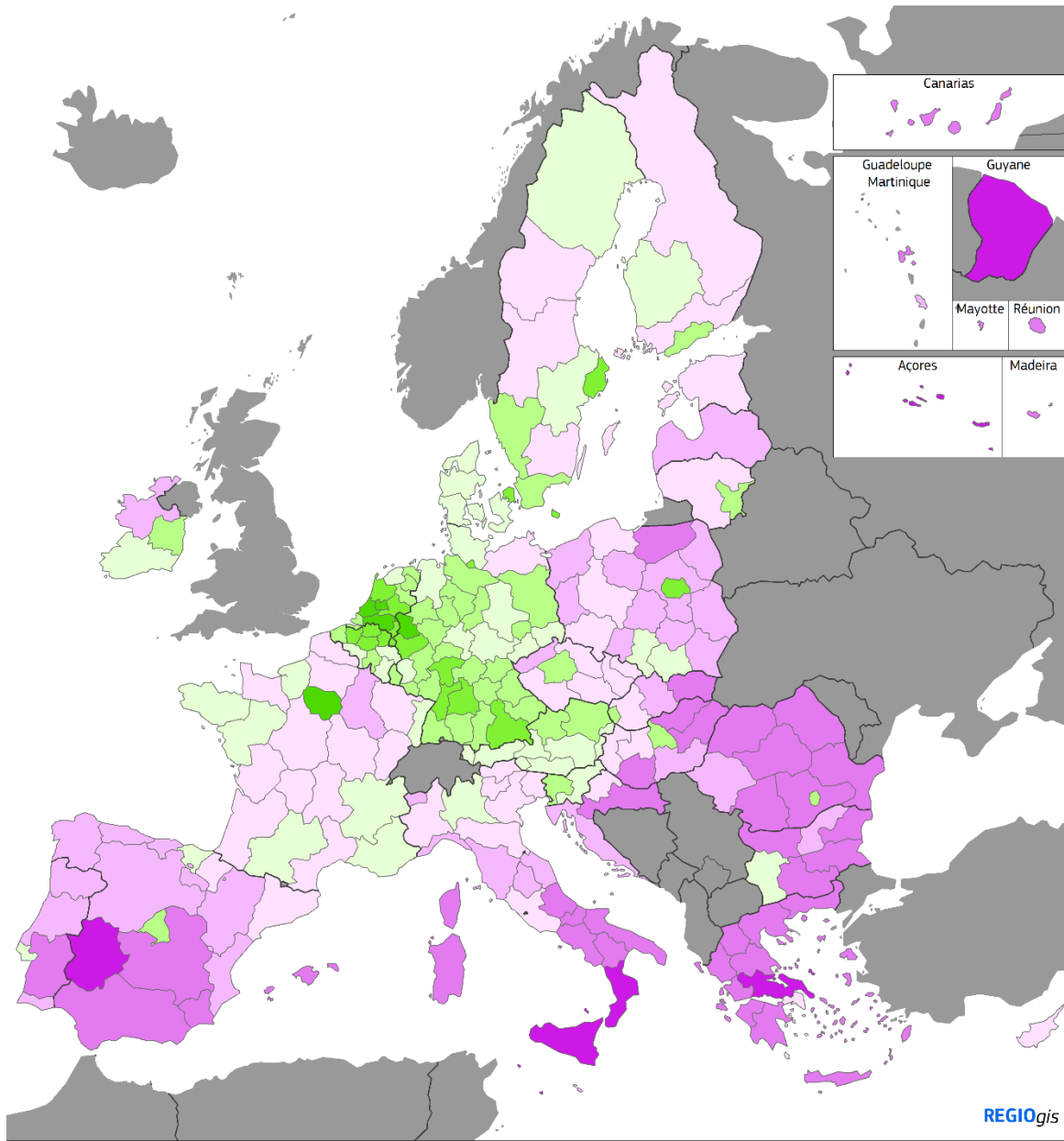


Revised, May 2023
EU-27 = 100

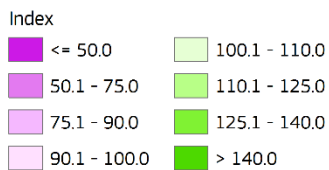


© EuroGeographics Association for the administrative boundaries

Map 3: RCI 2.0 - 2022 edition, Efficiency sub-index



Regional Competitiveness Index 2.0, 2022 edition - Efficiency sub-index

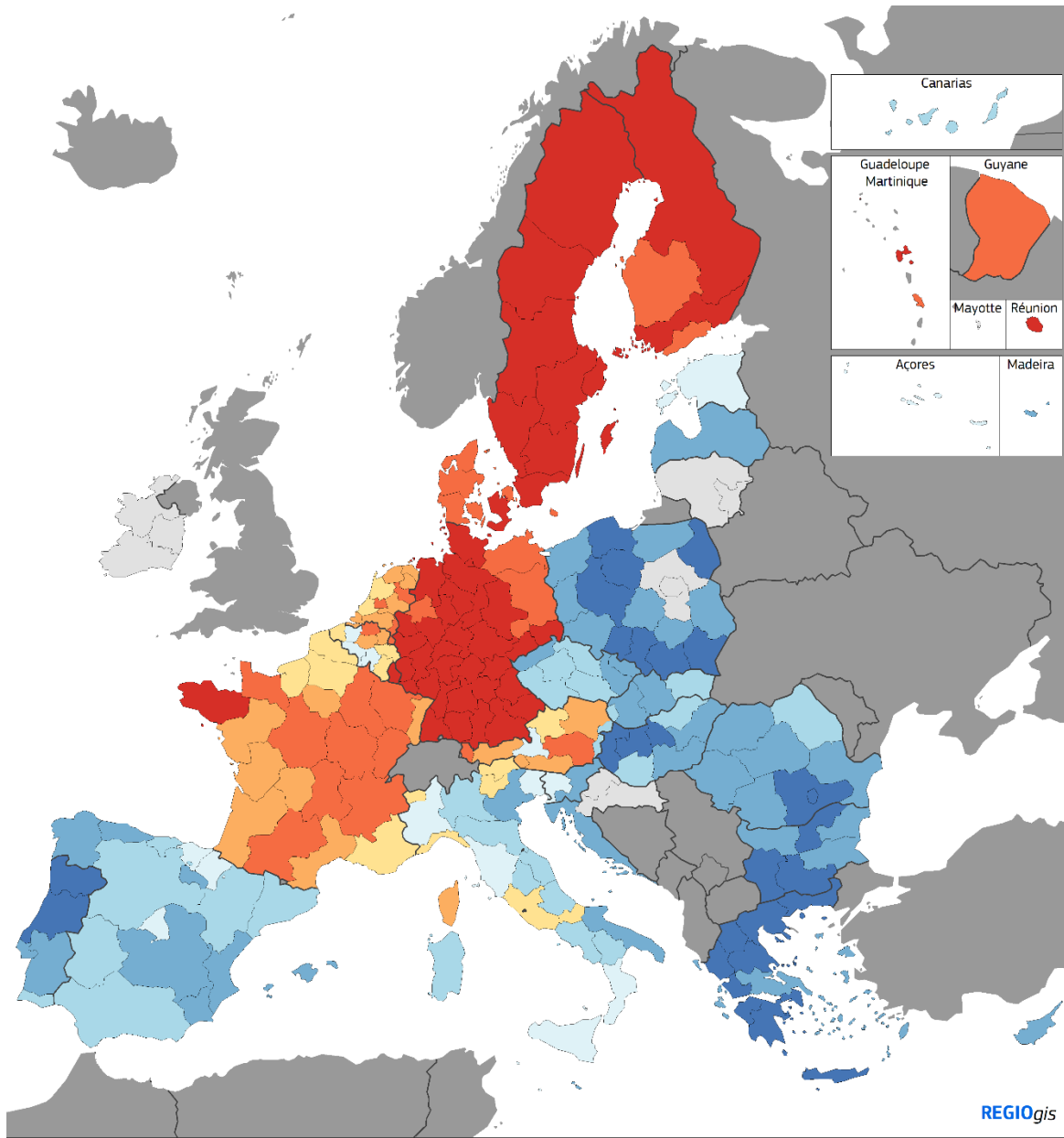


Revised, May 2023
EU-27 = 100

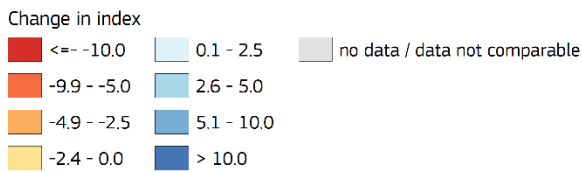


© EuroGeographics Association for the administrative boundaries

Map 4: RCI 2.0 index changes between 2016 and 2022 edition



RCI 2.0 index change between 2016 edition and 2022 edition

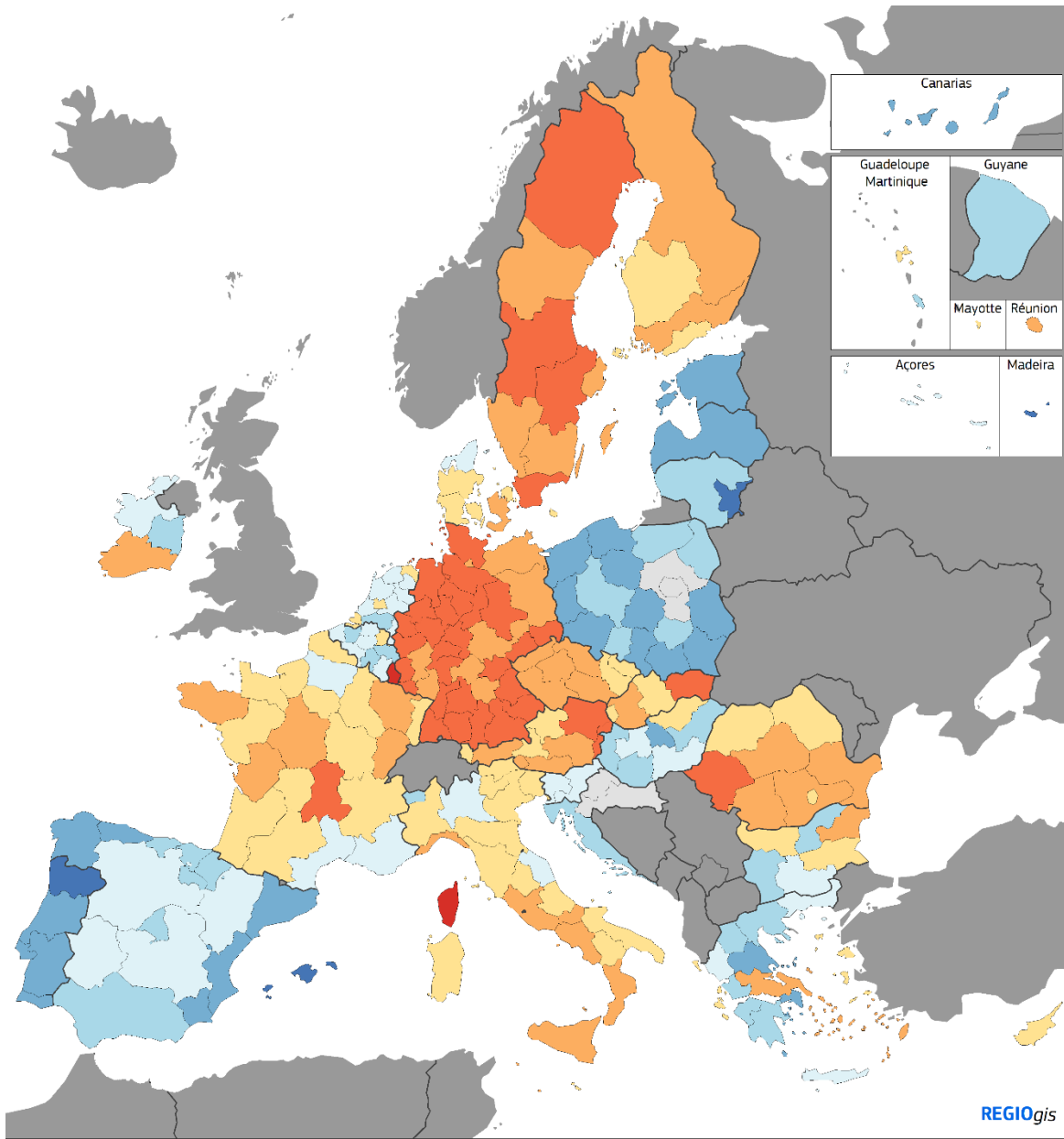


Revised, May 2023
 Data for some regions cannot be compared due to changes in the NUTS classification (RCI 2.0, 2022: PL91 and PL92)

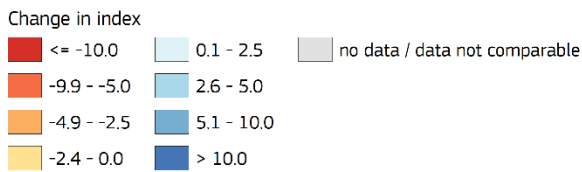


© EuroGeographics Association for the administrative boundaries

Map 6: RCI 2.0 index changes between 2019 and 2022 edition



RCI 2.0 index change between 2019 edition and 2022 edition

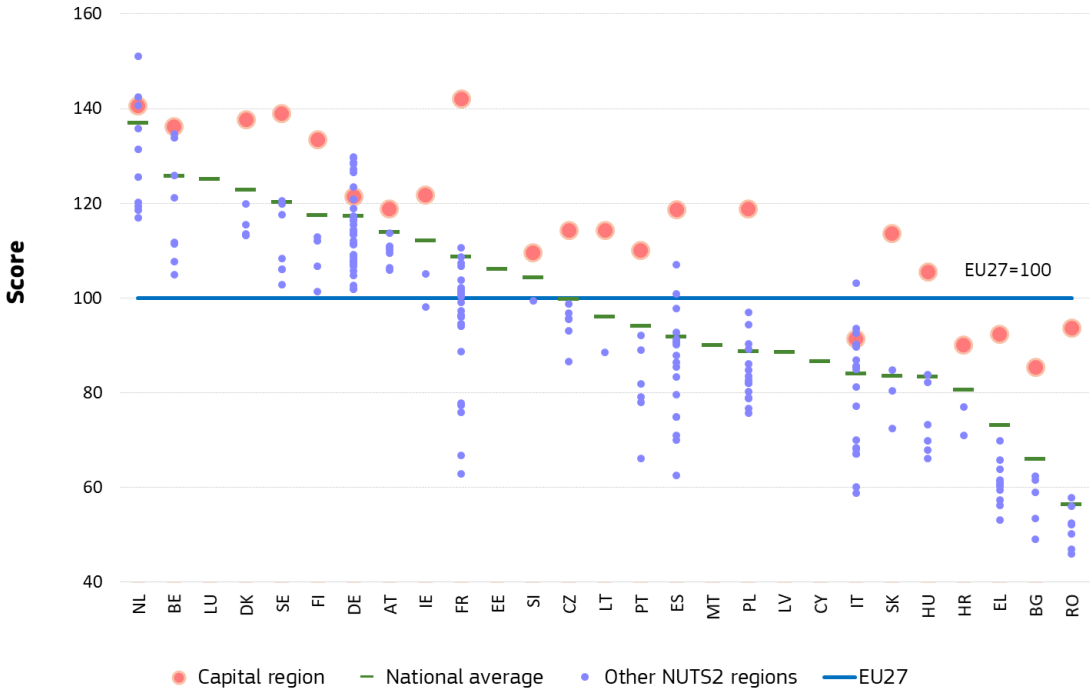


Revised, May 2023
 Data for some regions cannot be compared due to changes in the NUTS classification (RCI 2.0, 2022: PL91 and PL92)



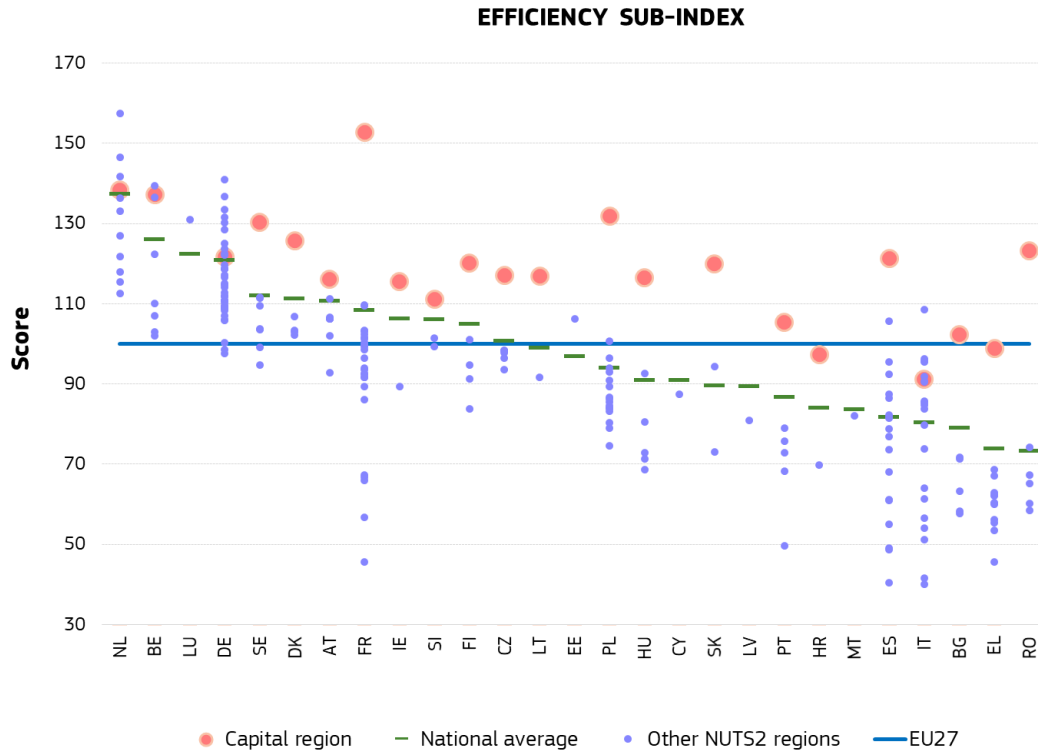
© EuroGeographics Association for the administrative boundaries

Figure 2: RCI 2.0 – 2022 edition – regional variation by Member State



Source: Directorate-General (DG) for Regional and Urban Policy and Joint Research Centre.
 NB: Member States ranked by national averages. There is a gap between the year mentioned in the title of the RCI and the actual data used for the calculations (i.e. RCI 2.0-2022 uses mainly data until 2019, prior to COVID-19 and the war in Ukraine)

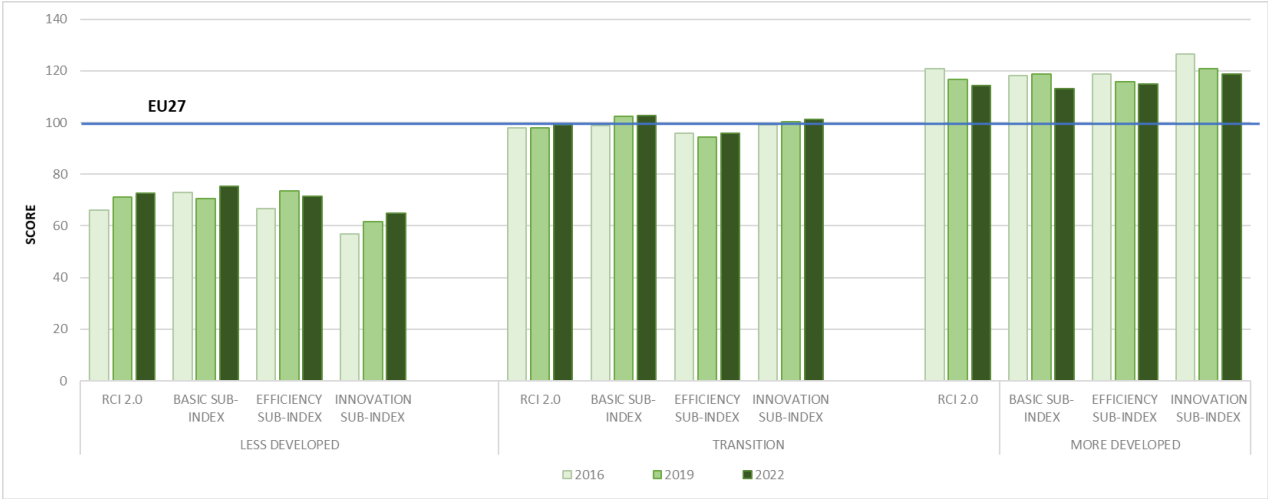
Figure 3 (middle): RCI 2.0 – 2022 edition – regional variation by Member State, Efficiency sub-index



Source: Directorate-General (DG) for Regional and Urban Policy and Joint Research Centre.

NB: Member States ranked by national averages. There is a gap between the year mentioned in the title of the RCI and the actual data used for the calculations (i.e. RCI 2.0-2022 uses mainly data until 2019, prior to COVID-19 and the war in Ukraine)

Figure 6: Time evolution of RCI 2.0 and its sub-indices, by stage of development



Source: Directorate-General (DG) for Regional and Urban Policy and Joint Research Centre.
 NB: Member States ranked by national averages. There is a gap between the year mentioned in the title of the RCI and the actual data used for the calculations (i.e. RCI 2.0-2022 uses mainly data until 2019, prior to COVID-19 and the war in Ukraine)

Table 4: RCI 2.0 – 2022 edition. Top 10 and bottom 10 EU regions

TOP 10				
Member State	Region code	Region name	RCI 2.0 - 2022 (EU27=100)	Rank
Netherlands	NL31	Utrecht	151.1	1
Netherlands	NL33	Zuid-Holland	142.5	2
France	FR10	Ile-de-France	142.0	3
Netherlands	NL41	Noord-Brabant	140.6	4
Netherlands	NL_C	Amsterdam and its commuting zone	140.6	4
Sweden	SE11	Stockholm	138.9	6
Denmark	DK01	Hovedstaden	137.7	7
Belgium	BE_C	Brussels and its commuting zone	136.3	8
Netherlands	NL22	Gelderland	135.7	9
Belgium	BE23	Oost-Vlaanderen	134.6	10

BOTTOM 10				
Member State	Region code	Region name	RCI 2.0 - 2022 (EU27=100)	Rank
Greece	EL51	Anatoliki Makedonia, Thraki	56.2	225
Romania	RO11	Nord-Vest	56.0	226
Bulgaria	BG34	Yugoiztochen	53.4	227
Greece	EL64	Stereia Elláda	53.2	228
Romania	RO12	Centru	52.5	229
Romania	RO31	Sud-Muntenia	52.1	230
Romania	RO41	Sud-Vest Oltenia	50.2	231
Bulgaria	BG31	Severozapaden	49.0	232
Romania	RO21	Nord-Est	47.0	233
Romania	RO22	Sud-Est	46.1	234

Note: Equal ranking is assigned if regions have the same score at the 1-digit level