

# **Study on the Impact of the Single Market on Cohesion: Implications for Cohesion Policy, Growth and Competitiveness**

**(CCIN 2010CE16BAT006)**

Submitted by LSE Enterprise with consortium partners Vienna University of Economics and Business, University of Helsinki and Centre for Social and Economic Research (CASE)

## **Annex to Final Report**

December 2011

### **Presented to:**

European Commission  
Directorate-General Regional Policy  
Directorate Policy Development  
CCI: 2010CE16BAT006

LSE Enterprise  
8th Floor, Tower Three  
London School of Economics  
T : +44. (0) 207955 7128

## Annex: Tables and figures referred to in main report

Figure 2.2: Correlations of GDP growth rates (5-year rolling windows, group mean)

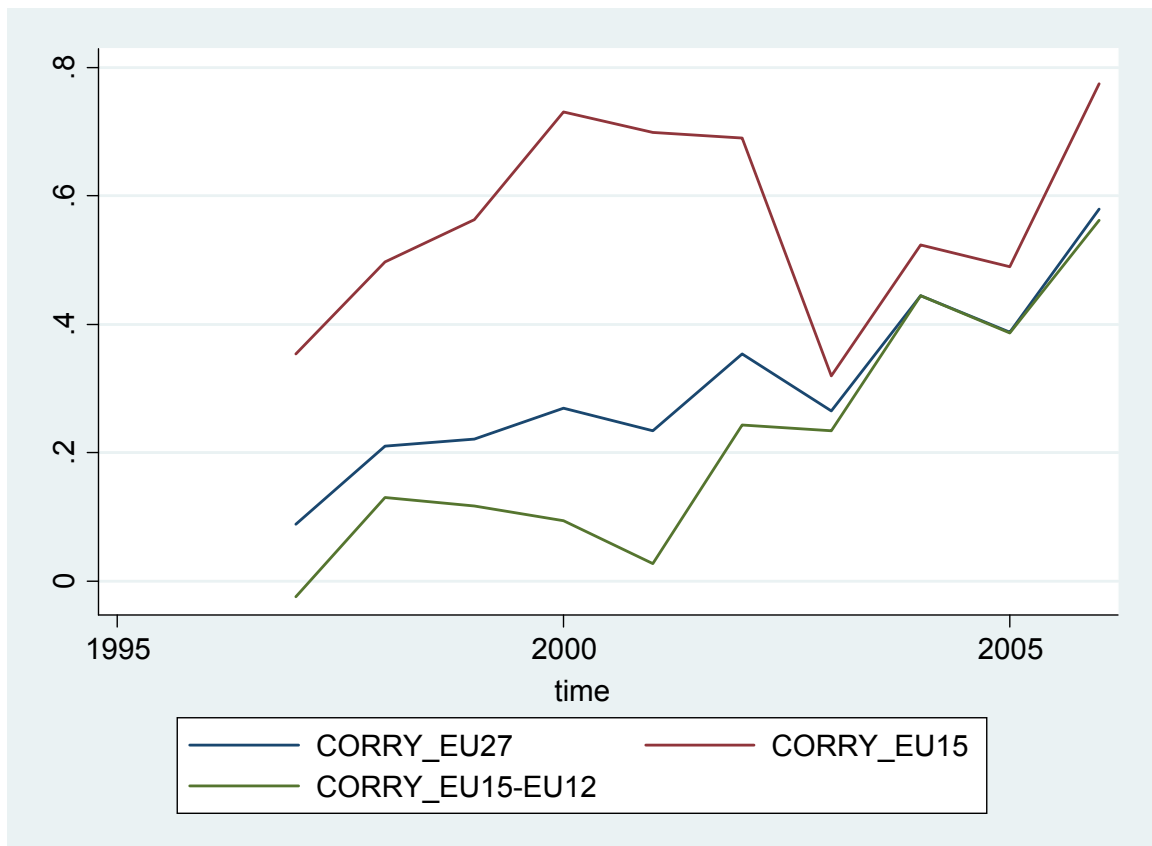


Figure 2.3: Development of bilateral differences in government budget balance (5-year averages, group mean)

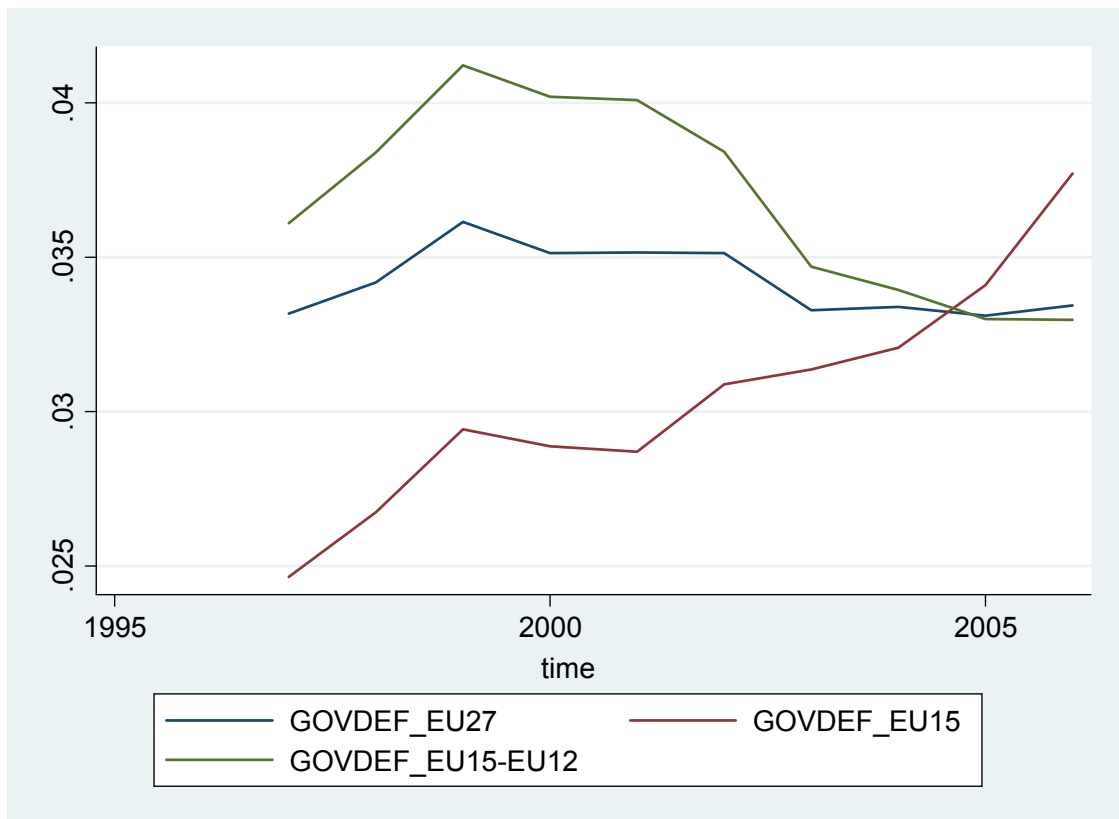
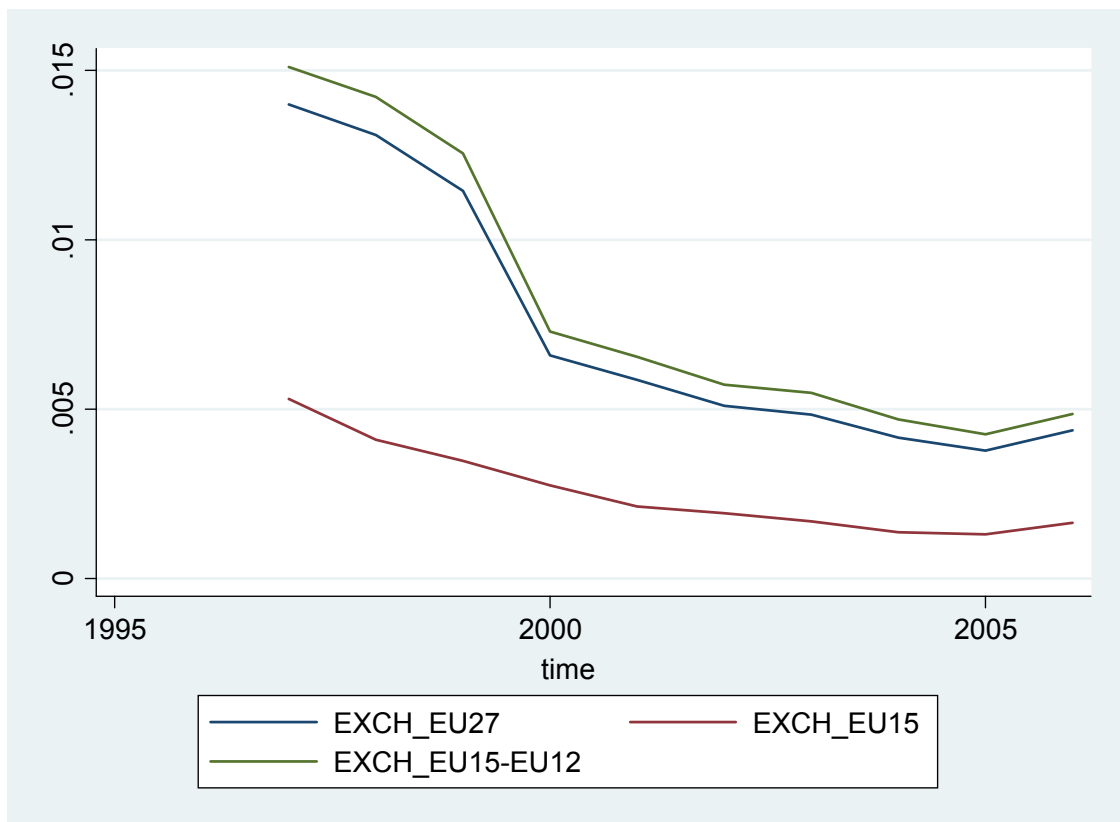
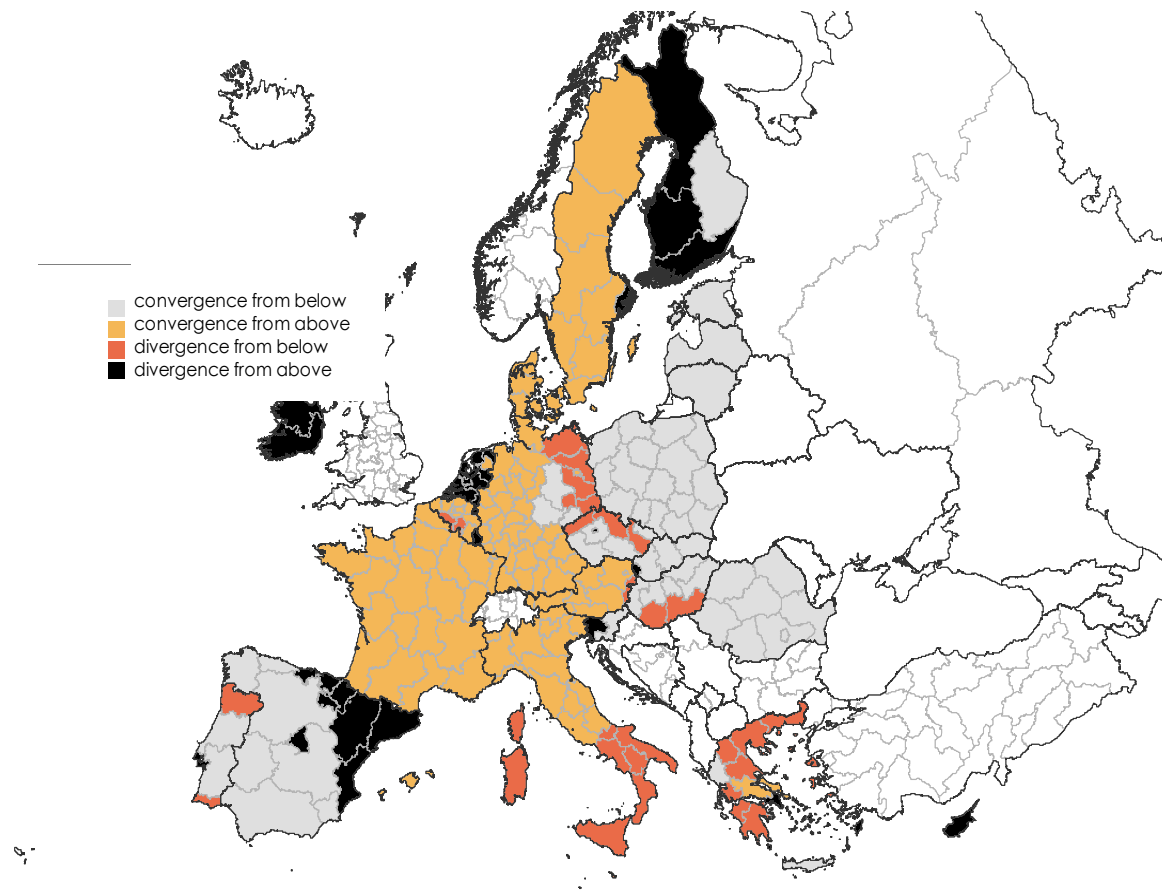


Figure 2.4: Development of bilateral exchange rate volatility (5-year rolling window, group mean)

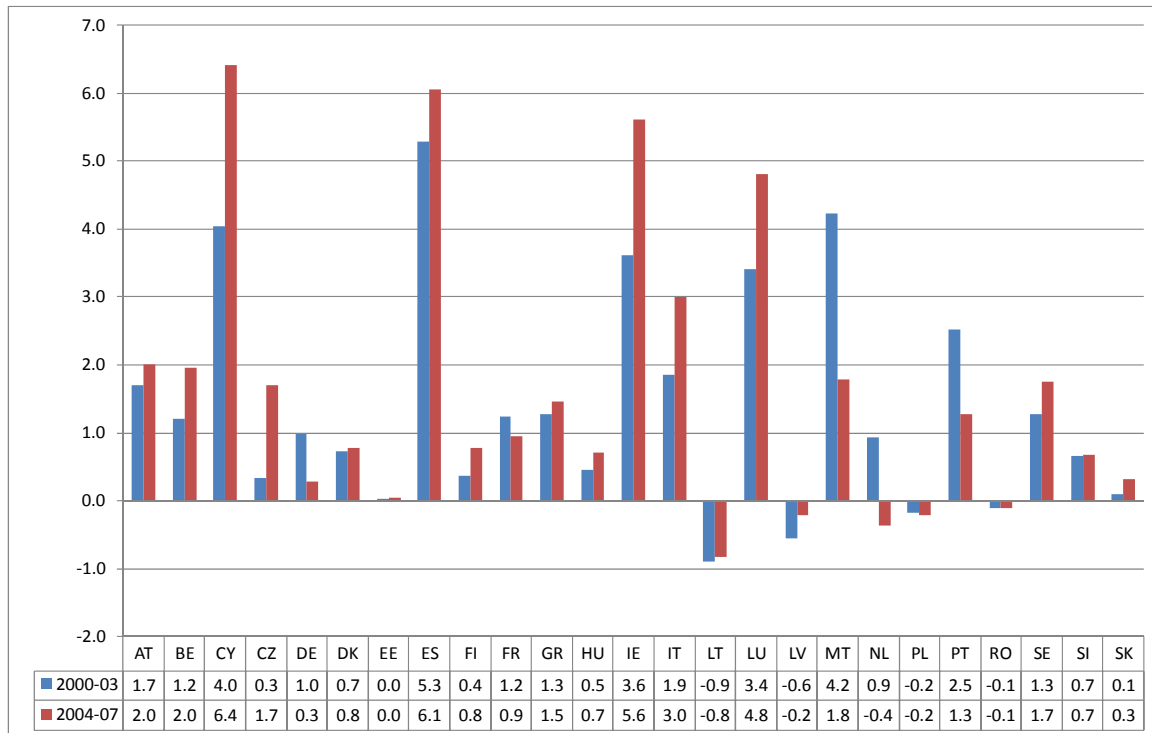


**Figure 2.6: Convergence types among European regions**



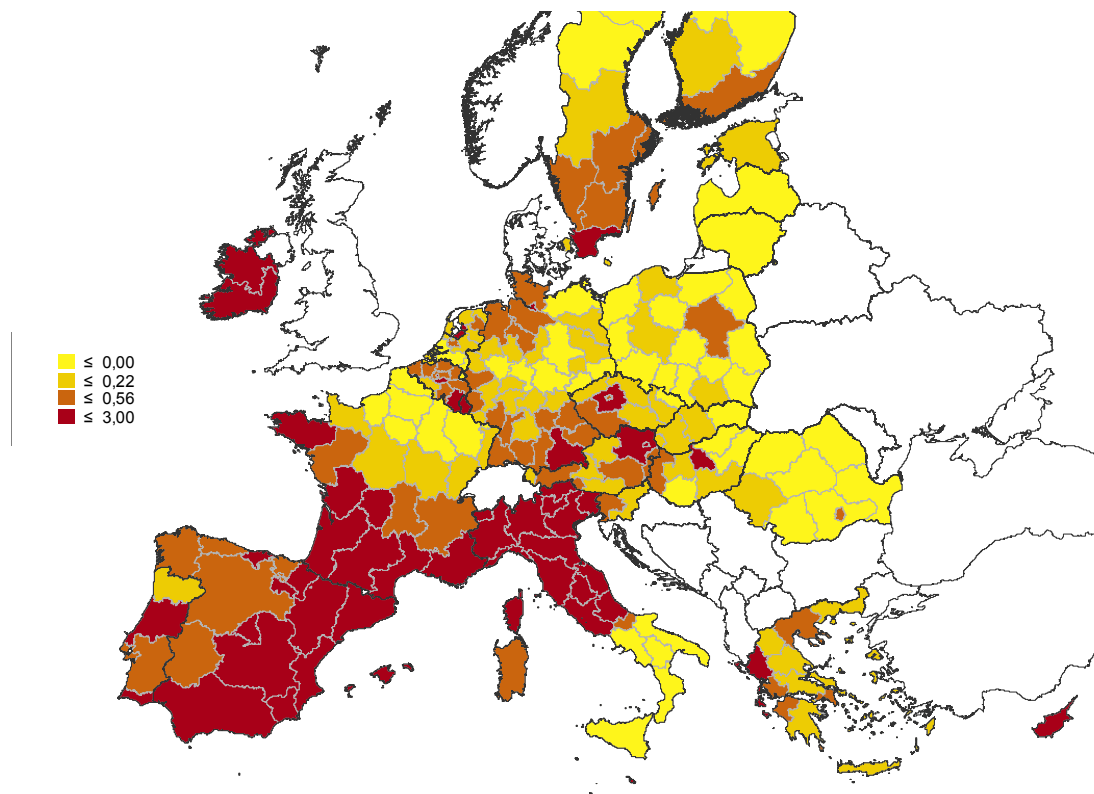
*Source:* EUROSTAT, own calculations Note: figure is based on average annual growth rates of GDP per capita at purchasing power parities in the time period 2000-2007 and GDP per capita level (at purchasing power standards in 2007) , Convergence from above = region has above average GDP per capita level in 2000, but below average growth rates, Convergence from below = region has below average GDP per capita level in 2000, but above average growth rates, Divergence from above = region has above average GDP per capita level in 2000 and above average growth rates, Divergence from below = region has below average GDP per capita level in 2000 and below average growth rates.

**Figure 2.7: Total Net Migration in Per Cent of Total Population by Country and Selected time periods**



Source: EUROSTAT, own calculations, Figure reports sum of absolute net migration across regions by year in per cent of total population.

**Figure 2.8: Total Net Migration Share**



Source: EUROSTAT, own calculations. Note Figure displays total immigration or emigration in the period 2000 to 2007

**Table 2.4: Skill Structure of Foreign Born Population by Country and Selected Years  
(in per cent)**

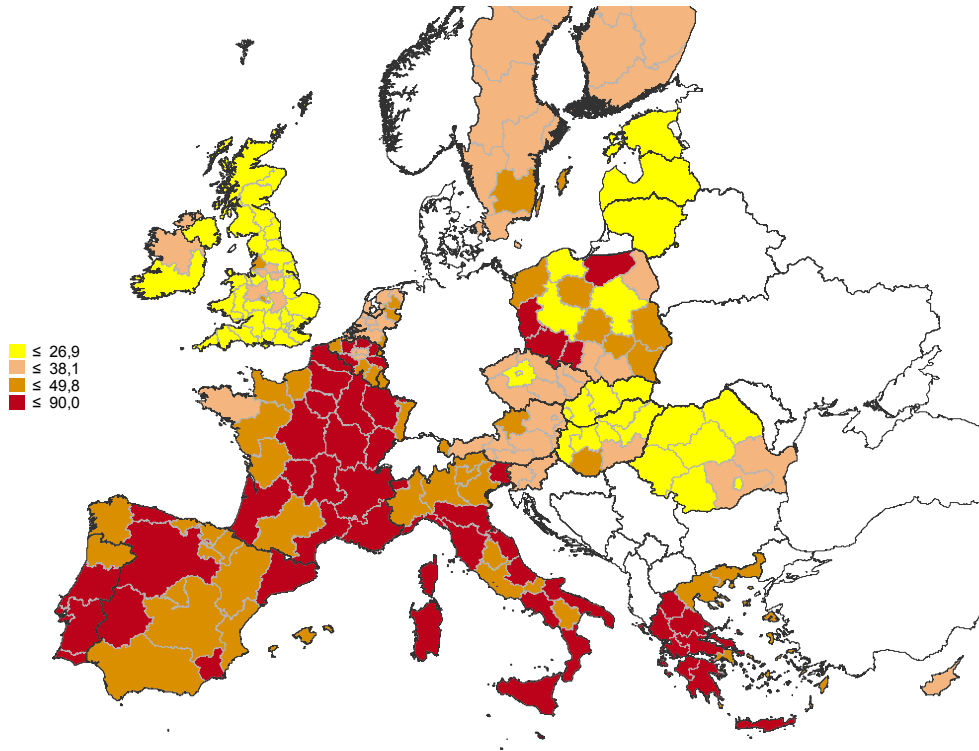
	low		Medium		High	
	2000	2008	2000	2008	2000	2008
AT	42.0	35.6	44.8	48.2	13.1	16.2
BE	55.8	48.2	24.3	27.6	19.9	24.3
BG		19.9		47.3		32.8
CY	29.5	28.7	36.5	39.7	34.0	31.6
CZ		22.5		56.3		21.2
DK	20.9	26.8	33.4	31.5	17.2	22.8
EE	22.7	12.1	40.3	42.3	26.7	28.3
ES	49.5	45.9	23.7	32.4	26.4	20.8
FI	37.6	33.4	34.1	40.3	24.6	26.3
FR	58.9	51.8	24.2	27.5	16.9	20.7
GR	44.2	49.9	38.2	36.8	17.7	13.3
HU		20.5		46.2		24.2
IE		18.5		33.0		35.6
IT		49.0		39.2		11.8
LT	26.3	21.3	33.1	54.0	40.6	24.6
LU	50.5	36.5	28.6	32.2	18.8	31.3
LV		14.7		49.4		20.2
MT		53.3		26.8		19.8
NL	49.7	38.3	31.2	36.3	18.4	24.2
PL		41.4		42.9		15.7
PT	63.0	54.2	23.8	26.0	13.2	19.8
RO		19.0		46.3		34.7
SE	33.3	31.3	39.5	35.0	23.3	28.7
SI		33.1		55.7		11.2
SK		14.5		64.0		21.5
UK	19.8	20.4	16.1	42.1	21.1	27.5

Source: ELFS

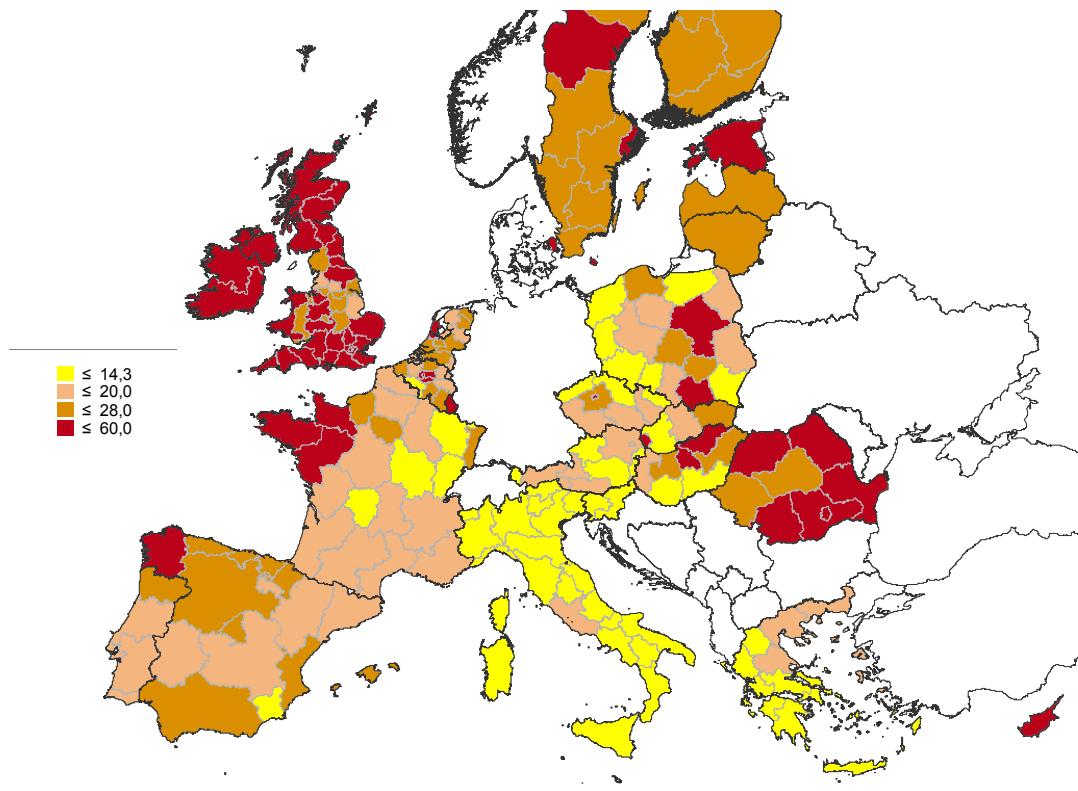


Figure 2.9: Share of low and high educated workers in total stock of foreign born

*Low educated*



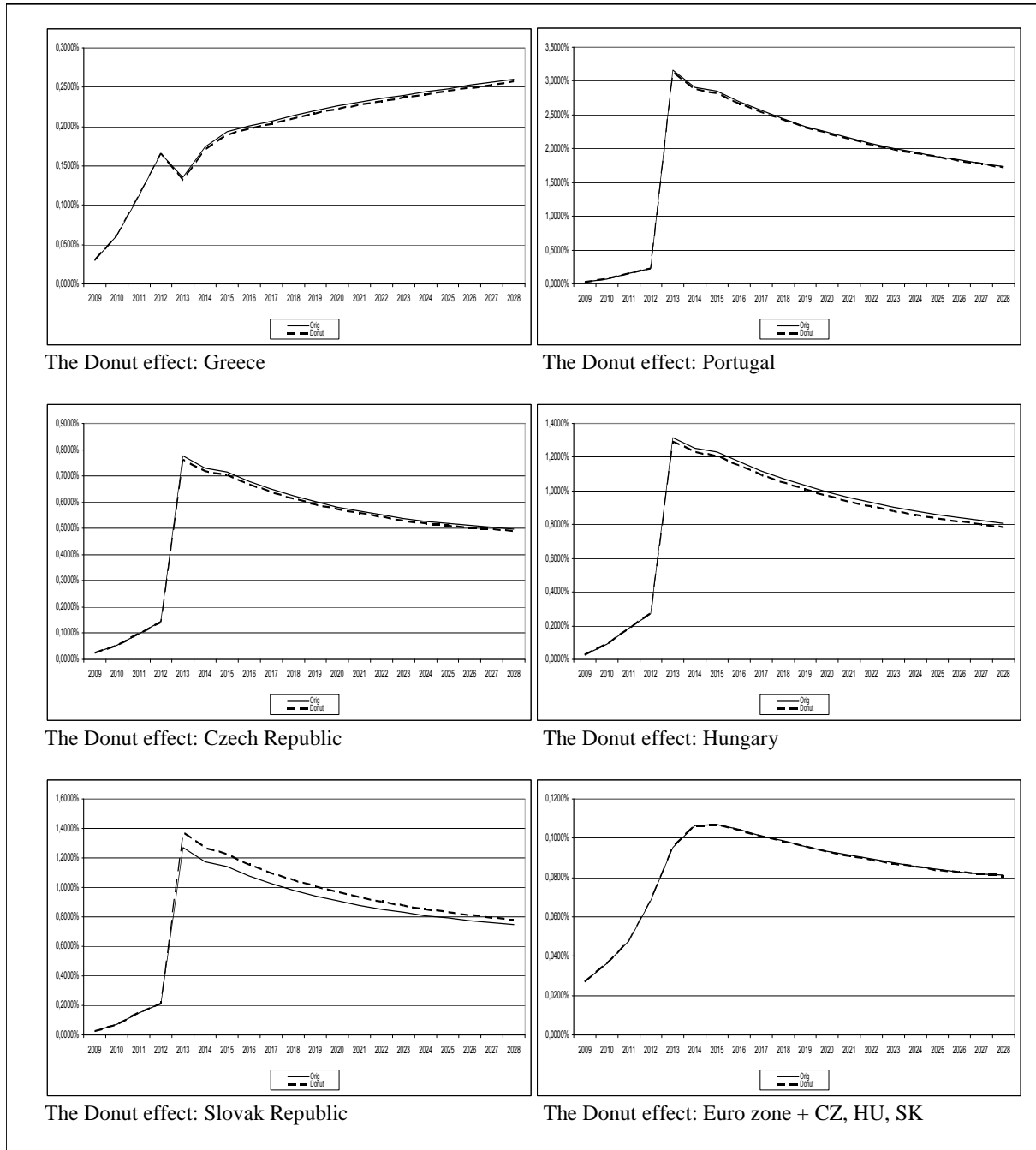
*Highly educated*



Source: ELFS, Note data reports average shares for the time period 2004-2007

**Figure 3.4: Results of the Donut scenario**

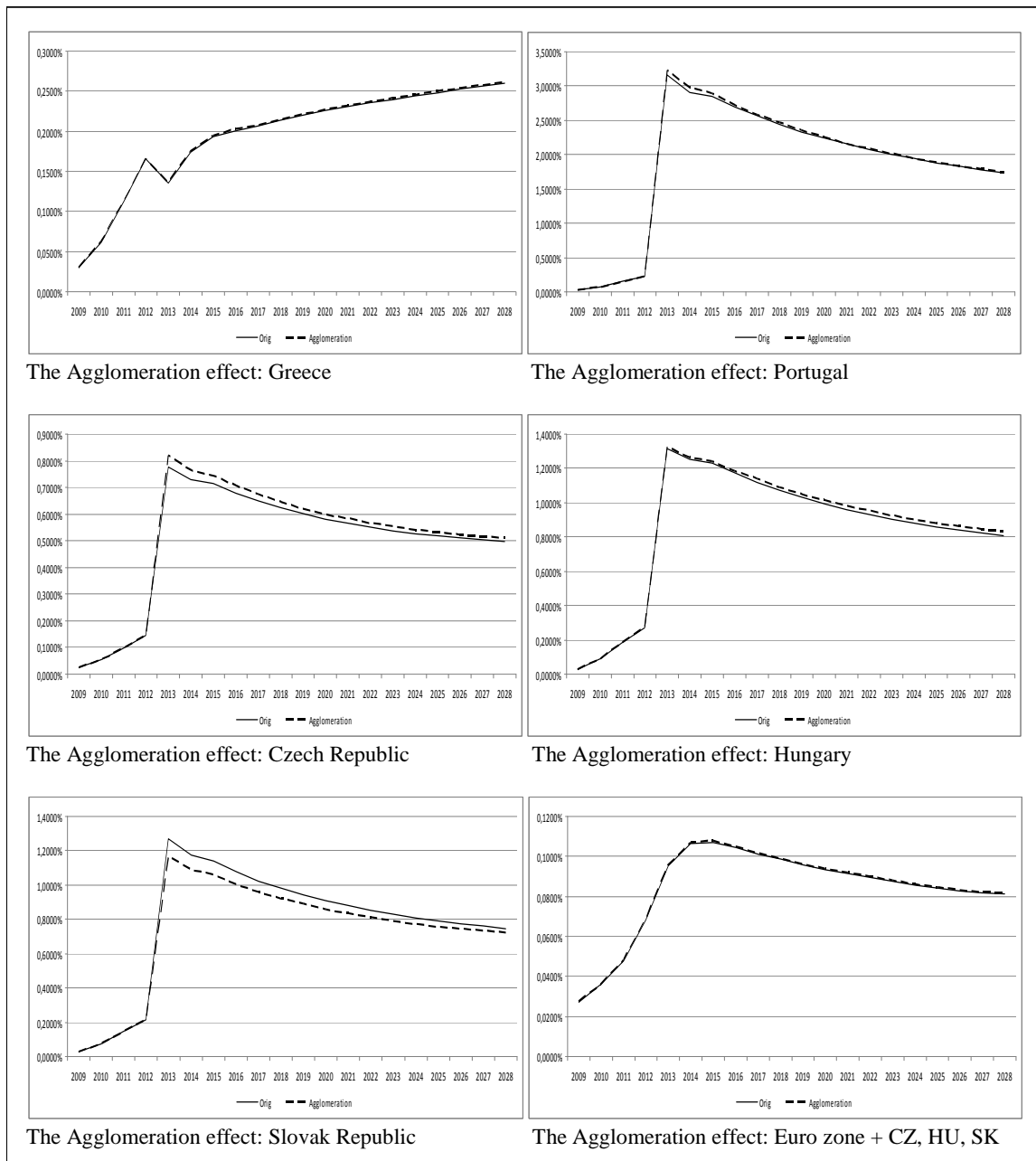
Percentage differences between scenario and baseline GDP values.



*Note:* The extended GMR Europe model system was run for the analysis

**Figure 3.5: Results of the Agglomeration and concentration scenario**

Percentage differences between scenario and baseline GDP values.



Note: The extended GMR Europe model system was run for the analysis

**Table 4.1: Lisbon Earmarked and Non-Earmarked Allocations: Competitiveness & Employment OPs**

Country	Total Allocation €	Lisbon Earmarking		Non earmarked	
		Decided OPs €	%	Decided Ops €	%
AT	1,027,311,617	934,061,242	90.9	93,250,375	9.1
BE	1,425,174,612	1,190,483,947	83.5	234,690,665	16.5
CY	612,434,992	314,511,444	53.4	297,923,548	46.6
CZ	417,922,713	329,286,599	78.8	88,636,114	21.2
DE	9,409,281,668	7,736,411,732	82.2	1,672,869,936	17.8
DK	509,577,239	457,388,655	89.8	52,188,584	10.2
ES	8,481,326,277	6,098,907,229	91.9	2,382,419,048	28.1
FI	1,595,966,044	1,375,965,515	93.0	220,000,529	7.0
FR	10,258,065,496	8,090,730,610	78.9	2,167,334,886	21.1
GR	638,376,702	310,481,234	48.6	327,895,468	51.4
HU	2,012,229,193	984,291,129	48.9	1,027,938,064	51.1
IE	750,724,742	600,862,370	80.0	149,862,372	20.0
IT	6,324,890,107	5,065,123,109	80.1	1,259,766,998	19.9
LU	50,487,332	43,923,978	71.4	6,563,354	28.6
NL	1,660,002,737	1,320,593,128	79.6	339,409,609	20.4
PT	940,634,265	663,811,932	70.6	276,822,334	29.4
SE	1,626,091,888	1,407,260,632	84.5	218,831,256	15.5
SK	454,890,489	343,259,311	74.6	111,631,178	25.4
UK	6,978,387,838	6,193,002,023	88.8	785,385,815	11.2
19	55,173,775,952	43,460,355,819	78.8	11,713,420,133	21.2

Source: Structural Funds Common Database – Strategic Report on Earmarking

**Table 4.2 Lisbon Earmarked and Non-Earmarked Allocations: Convergence OPs**

Country	Total Allocation	Lisbon Earmarking		Non earmarked	
		Decided OPs	%	Decided OPs	%
AT	177,166,964	154,478,287	87.2	22,688,677	12.8
BE	638,326,154	491,278,519	77.0	147,047,635	23.0
BG	6,673,628,244	3,385,886,925	57.0	3,287,741,319	43.3
CZ	25,884,681,771	14,719,590,554	56.9	11,165,091,217	43.1
DE	16,079,334,622	11,732,517,803	73.0	4,346,816,819	27.0
EE	3,403,459,881	1,560,942,443	45.9	1,842,517,438	54.1
ES	26,176,407,704	20,757,713,276	79.3	5,418,694,427	20.7
FR	3,191,155,555	1,811,283,210	56.8	1,379,872,345	43.2
GR	19,571,884,743	13,325,507,916	68.1	6,246,376,827	31.9
HU	22,908,919,407	12,175,632,967	53.2	10,733,286,440	46.8
IT	21,640,425,296	14,306,106,346	66.1	7,334,318,950	33.9
LT	6,775,492,823	3,534,347,834	51.6	3,241,144,989	48.4
LV	4,530,447,634	2,527,858,320	55.8	2,002,589,314	44.2
MT	840,123,051	368,140,800	43.8	471,982,251	56.2
PL	65,221,852,992	42,336,237,226	64.9	22,885,615,766	35.1
PT	20,470,926,247	16,806,269,532	87.1	3,664,656,714	12.9
RO	19,213,036,712	9,858,248,292	51.3	9,354,788,420	48.7
SI	4,101,048,636	2,694,750,638	65.7	1,406,297,998	34.3
SK	10,905,729,461	6,412,334,224	58.8	4,493,395,237	41.2
UK	2,912,549,625	2,355,639,764	80.9	556,909,861	19.1
20	281,316,597,521	181,314,764,877	64.5	100,001,832,644	35.5

Source: Structural Funds Common Database – Strategic Reporting Earmarking

**TABLE 5.1 The main ‘drivers’ of the Cohesion Policy 2007-2013 interventions, by regions**

Type of regions	Intervention logics						
	<a href="#">I Broad-based economic development</a>	<a href="#">II Transport connectivity</a>	<a href="#">III Building on the position secured</a>	<a href="#">IV Advanced and inclusive development</a>	<a href="#">V Catalysts for regional economic restructuring</a>	<a href="#">VI Advanced industrial development</a>	<a href="#">VII Leveraging region specific assets</a>
Convergence	Bucharest (RO)  Campania (IT) Calabria (IT) Central Bohemia (CZ) Central Moravia (CZ) Dolnoslaskie (PL) Slaskie (PL) West Wales & The Valleys (UK) Galicia (ES) Estremadura (ES) Andalucia (ES) Castilla La Mancha (ES) South Transdanubia (HU) Brandenburg (DE) <i>(Brandenburg Nord East - convergence)</i> Sicily (IT)	North Hungary (HU)  South West (CZ) North West (CZ) Podkarpackie (PL)  South Central (BG)	Mazowieckie (PL)		Cornwall and Isles of Scilly (UK) Malopolskie (PL) Thüringen (DE)		North Great Plain (HU) Lubelskie (PL) Alentejo (PT) Puglia (IT)
Phasing out	Wallonia Hainaut (BE)  Brandenburg (DE)  <i>(Brandenburg South West - phasing out)</i>	Basilicata (IT)	Burgenland (AT)  Central Macedonia (GR)	Niedersachsen (DE) <i>(Lüneburg - phasing out)</i>			Asturias (ES)
Phasing in	Central Hungary (HU) Castilla y Leon (ES)		Eastern Finland (FI)		Border Midland and Western (IE)  Merseyside (UK)		Southern Aegean (GR) Sardinia (IT)

Competitiveness			Prague (CZ) Catalonia (ES) Ovre Norrland (SE) Southern Eastern (IE) Pays de la Loire (FR) North Netherlands (NL) Lisbon (PT)	Lower Austria (AT) Salzburg (AT) Berlin (DE) Bremen (DE) Hamburg (DE) Niedersachsen (DE) <i>(Weser-Ems, Hannover, Braunschweig - competitiveness )</i> Rheinland – Pfalz (DE) Stockholm (SE) South Netherlands (NL)	Brussels (BE) Skane- Blekinge (SE) West Sweden (SE) Mid- North Sweden (SE) Southern Finland (FI) Northern Finland (FI) Western Finland (FI) Provence - Alpes - Cote d'Azur (FR)	Tuscany (IT) Madrid (ES) North East (UK) Piedmont (IT) Lorraine (FR)	Corse (FR)

**Table 5.2 Main regional objectives of ERDF interventions (2007-2013), by type of region (73 regions)**

<b>What are the stated main objectives of the programme for this region (country)?* (more than one choice)</b>						
<b>ERDF</b>	<b>regions</b>				<b>Total</b>	<b>%</b>
	<b>CP</b>	<b>CV</b>	<b>PI</b>	<b>PO</b>		
<b>Innovation</b>	20	11	3	4	38	13.5
<b>Competitiveness</b>	13	10	2	2	27	9.6
<b>Urban development</b>	12	11	1	3	27	9.6
<b>Governance</b>	9	13	1	2	25	8.9
<b>Promoting entrepreneurship</b>	9	9	3	1	22	7.8
<b>Transport</b>	4	14	1	2	21	7.5
<b>Tourism</b>	1	19	0	0	20	7.1
<b>Environmental sustainability</b>	8	8	2	1	19	6.8
<b>Accessibility</b>	9	6	0	2	17	6.0
<b>Energy and risk prevention</b>	6	5	0	2	13	4.6
<b>Economic growth</b>	6	6	0	0	12	4.3
<b>Infrastructure</b>	2	7	1	1	11	3.9
<b>Information society</b>	1	7	1	0	9	3.2
<b>Social cohesion</b>	1	4	0	2	7	2.5
<b>Improving business environment</b>	5	1	0	0	6	2.1
<b>Employment</b>	2	0	0	1	3	1.1
<b>Human resources</b>	1	1	0	1	3	1.1
<b>Territorial cohesion</b>	1	0	0	0	1	0.4



**TABLE 5.3 Main regional objectives of ESF interventions (2007-2013), by type of region (73 regions)**

<b>What are the stated main objectives of the programme for this region (country)?</b>						
<b>ESF</b>	<b>regions</b>				<b>Total</b>	<b>%</b>
	<b>CP</b>	<b>CV</b>	<b>PI</b>	<b>PO</b>		
<b>Human capital</b>	6	7	1	3	17	17.5
<b>Governance</b>	4	6	1	2	13	13.4
<b>Transnational and interregional cooperation</b>	4	6	1	2	13	13.4
<b>Employment</b>	4	5	1	1	11	11.3
<b>Social inclusion</b>	4	5	1	1	11	11.3
<b>Promoting entrepreneurship</b>	4	4	0	2	10	10.3
<b>Innovation</b>	3	1	0	1	5	5.2
<b>Competitiveness</b>	2	1	0	1	4	4.1
<b>Increase women participation</b>	1	1	0	1	3	3.1
<b>Attractive region</b>	2	0	0	0	2	2.1
<b>Economic growth</b>	1	0	0	1	2	2.1
<b>Environmental sustainability</b>	1	1	0	0	2	2.1
<b>Institutional capacity</b>	1	1	0	0	2	2.1
<b>Infrastructure</b>	0	0	0	1	1	1.0