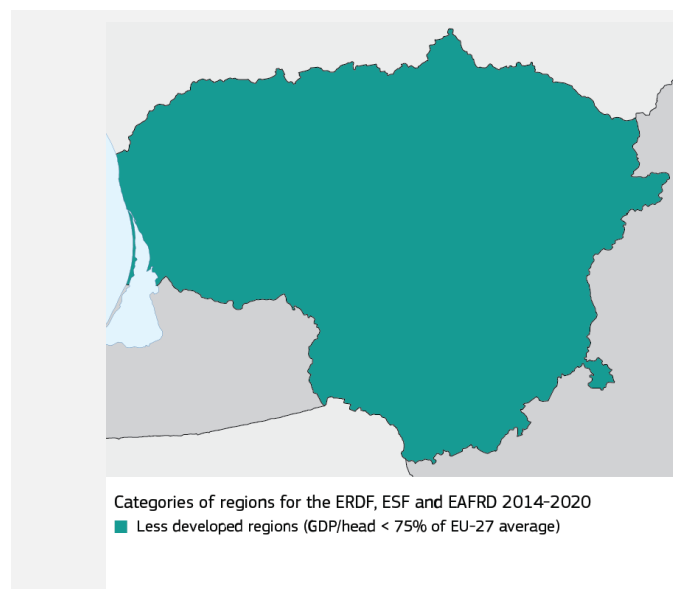


EUROPEAN STRUCTURAL AND INVESTMENT FUNDS¹



LITHUANIA

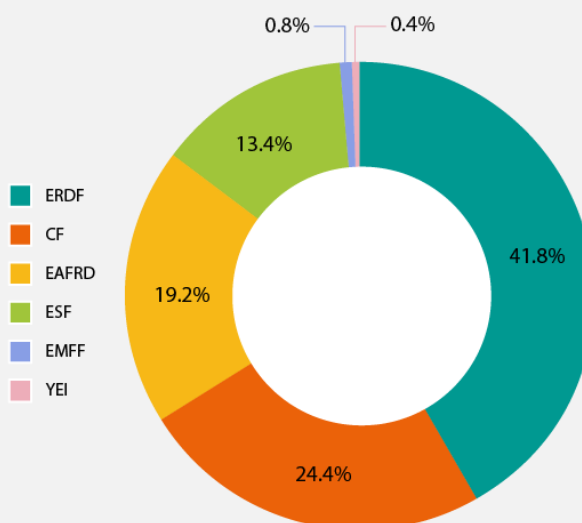
With a budget of **EUR 454 billion** for 2014-2020, the **European Structural and Investment Funds (ESI Funds)** are the European Union's main investment policy tool. The ESI Funds combine five Funds: **European Regional Development Fund (ERDF)**; **European Social Fund (ESF)**; **Cohesion Fund (CF)**; **European Agricultural Fund for Rural Development (EAFRD)**; and the **European Maritime and Fisheries Fund (EMFF)**. Lithuania, together with 19 other Member States, will also benefit from the **Youth Employment Initiative (YEI)**.



Through three national programmes, Lithuania has been allocated **EUR 8.39 billion** from ESI Funds over the period 2014-2020. With a national contribution of **EUR 1.56 billion**, Lithuania has a total budget of **EUR 9.95 billion** to be invested in various areas, from innovation and competitiveness to SME support, as well as in resource efficiency, promoting employment, quality education and social inclusion.

ESI FUNDS BUDGET FOR LITHUANIA (2014-2020)

- EUR 3.5 billion through the ERDF
- EUR 2.05 billion through the CF
- EUR 1.61 billion through the EAFRD
- EUR 1.13 billion through the ESF
- EUR 63 million through the EMFF
- EUR 32 million through the YEI



¹ Data included in this factsheet have been extracted from the ESIF Open Data platform which is accessible online at <https://cohesiondata.ec.europa.eu/>. Data on target achievements are based on officially agreed common indicators or, for the ESF, programme specific indicators (reference date for data: November 2015).

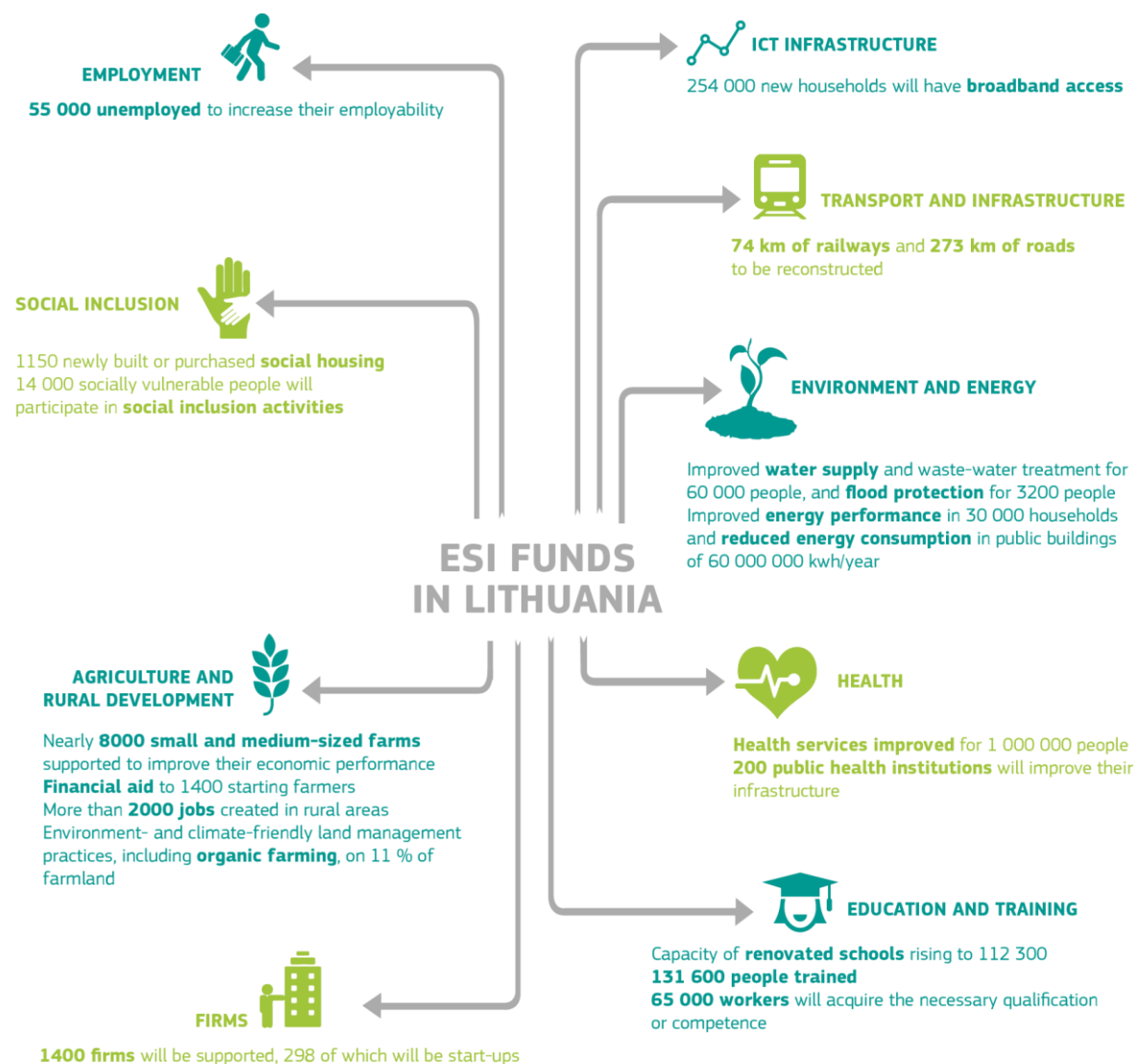
MAIN PRIORITIES

ESI FUNDS IN LITHUANIA WILL:

- Contribute to improving the **innovativeness** and **competitiveness** of the economy and to strengthening the links between R&I and industrial policies.
- Support **SMEs** as well as the modernisation of agricultural, forestry, aquaculture and fishery holdings.
- Help tackle unemployment and social exclusion, improve the quality of **education** and **training** and ensure that labour market demand is better met by increasing the level of qualifications and skills of the active labour force and preventing early school leaving.
- Extend the **TEN-T transport networks** and improve accessibility.
- Support environment- and climate-friendly land-management practices and contribute to a reduction in **greenhouse gases**.
- Enhance the efficiency of **public administration**.

TARGETS

All funds are designed to support Lithuania's **socio-economic development**. The expected results (**targets**) give an overall view of where Lithuania should be on key parameters by 2020.



HOW WILL LITHUANIA ACHIEVE THE EXPECTED RESULTS?

Lithuania will work towards the efficient spending of the EU funds, based on a multidimensional approach.

FULFILLING PRECONDITIONS FOR THE EFFECTIVE AND EFFICIENT USE OF ESI FUNDS

To ensure that ESI Funds are used efficiently and focus on results, the Commission has set some preconditions when allocating ESI Funds to the Member States.

The main purpose of these conditions, also called 'ex-ante conditionalities', is to help all Member States and their regions to tackle issues that past experience has shown to be particularly relevant to the efficient implementation of the Funds. These principles could be linked, for example, to the implementation of EU legislation, the financing of strategic EU projects, or administrative evaluation and institutional capacity.

These *ex-ante* conditionalities cover most investment areas: improvements to research and innovation (R&I) strategies as well as strategic plans linked to environmental protection, energy resources, transport, socio-economic inclusion, health services, employment, education and training.

ENCOURAGING THE USE OF FINANCIAL INSTRUMENTS AND TERRITORIAL TOOLS

- Over EUR 700 million is expected to be made available via financial instruments, and targeted in particular at energy efficiency, SMEs and self-employment. This represents an increase of more than 50 % on the 2007-2013 programming period.
- Programmes put in place will ensure that the territorial instruments available are used to full advantage. Urban authorities will be responsible for managing EUR 210 million of investment, mainly to be allocated to sustainable urban development and economic and social regeneration. The implementation of local development strategies worth around EUR 100 million in all rural and coastal, and some urban, areas will strengthen local partnerships.

SIMPLIFICATION FOR BENEFICIARIES

Lithuania plans to simplify the procedures for all the ESI Funds to make greater use of simplified costs options and to improve the IT systems available to beneficiaries (e.g. by creating a single access point, improving the quality of information, and providing online forms).

SUCCESS STORIES: EXAMPLES OF PROJECTS USING 2007-2013 ESI FUNDS

NEW VILNIUS BYPASS CUTS TRAFFIC JAMS AND TRAVEL TIMES

The Western Bypass around Lithuania's capital relieves the city centre of congestion while improving road infrastructure in the north-west metropolitan area. The new 2.84-kilometre stretch of road improves the overall accessibility in and around the city, and makes it easier to get to and from the international airport. The bypass should also reduce the number of accidents and cut noise pollution in these areas.

The new stretch of road improves the overall accessibility in and around the city. This new route has been designed to support the development of the capital city's key industrial areas, located in the southern and eastern parts of Vilnius. More than 400 jobs were created during project implementation.

Total budget: EUR 51 325 904

EU budget contribution to the project from CF: EUR 37 732 720

More information: <http://europa.eu/!HB43yP>

BETTER CROSS-BORDER EMERGENCY SERVICES FOR LITHUANIA AND POLAND

Following a needs analysis of those living in the cross-border areas between Lithuania's Marijampolė & Alytus regions and the Podlaskie & Warmińsko-Mazurskie regions of Poland, a joint project was launched to improve both countries emergency services' response times and to promote the EU-wide 112 emergency number.

There had traditionally been a lack of cooperation between the Lithuanian and Polish emergency services, chiefly due to the insufficient integration between the existing services of the two countries and the lack of a developed infrastructure.

Under the ERDF-funded project, new alerting and dispatch centres were established with the express intention of receiving and dealing with 112 calls and speeding up response times.

Total budget: EUR 4 083 436

EU budget contribution to the project from ERDF: EUR 3 470 921

More information: <http://europa.eu/ljR36CF>

WORKING FOR THE WELFARE OF THE FAMILY

While working parents in Lithuanian cities can count on a broad range of options for balancing childcare and other responsibilities, there are fewer opportunities in the countryside. The 'Working for the welfare of the family' project set out to change this situation in Tauragė county by offering rural women the chance to break with traditional home-centred roles as carers. For the women, the project provided encouragement, career advice and training. For the families, social workers offered support for childcare and looking after elderly family members while the women were away. The project outcome was significant as it helped the municipal authorities to upgrade their whole approach to groups at risk. In total, 25 individuals were helped through the provision of homecare support. Several families with disabled children received help thanks to the new rehabilitation centre, which cares for their children during working hours.

Total budget: EUR 1 113 520

EU budget contribution to the project from ESF: EUR 1 113 520

More information: <http://europa.eu/lyX34pt>

MODERNISATION OF MARKETING MILK

EAFRD support helped a Lithuanian dairy cooperative in the village of Varanauskas to modernise its transportation and milk accounting systems by acquiring new vehicles equipped with high-tech milk suction technology and integrated accounting systems. The cooperative was able to improve its cost-efficiency and competitiveness on the market.

Total budget: EUR 333 272

EU budget contribution to the project from EAFRD: EUR 129 753

More information: <http://europa.eu/vW66mk>

MODERN EQUIPMENT FOR POND AQUACULTURE

The introduction of heavy-duty machinery has boosted productivity and competitiveness in a pond aquaculture business, expanding production and creating new jobs.

Total budget: EUR 379 783

EU budget contribution to the project from EFF: EUR 170 903

(During the 2007-2013 period, the EMFF was known as European Fisheries Fund or EFF)

FIND OUT MORE ABOUT ESI FUNDS IN LITHUANIA

- ESI Funds: <http://ec.europa.eu/esif>
- ESI Funds Open Data Platform: <https://cohesiondata.ec.europa.eu/countries/LT>
- ERDF & CF: http://ec.europa.eu/regional_policy/en/atlas/lithuania
- ESF: <http://ec.europa.eu/esf/main.jsp?catId=387&langId=en>
- YEI: <http://ec.europa.eu/social/BlobServlet?docId=13482&langId=en>
- EAFRD: http://ec.europa.eu/agriculture/rural-development-2014-2020/country-files/index_en.htm
- EMFF: http://ec.europa.eu/fisheries/cfp/emff/country-files/index_en.htm
- The EU Representation in Lithuania: http://ec.europa.eu/lietuva/news_hp/index_lt.htm
- EU project examples: http://ec.europa.eu/budget/euprojects/search-projects/list_en
- Follow us on Twitter: @EU_Regional @EU_Social @EU_Agri @EU_Mare #ESIFunds