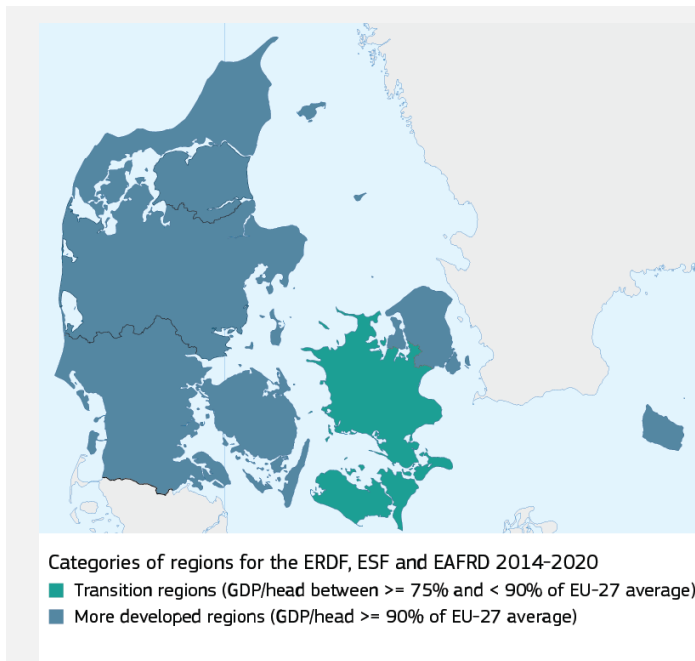


EUROPEAN STRUCTURAL AND INVESTMENT FUNDS¹



DENMARK

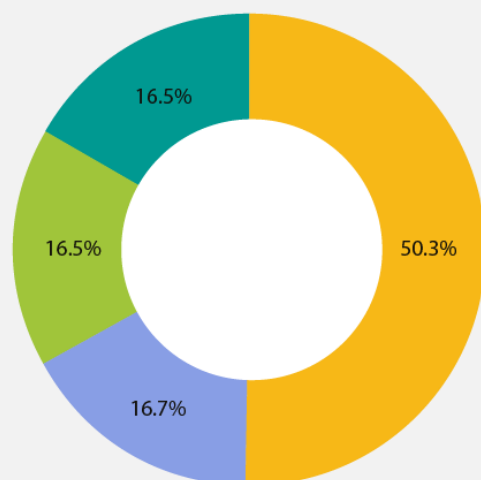
With a budget of **EUR 454 billion** for 2014-2020, the **European Structural and Investment Funds (ESI Funds)** are the European Union's main investment policy tool. The ESI Funds combine five Funds: **European Regional Development Fund (ERDF)**; **European Social Fund (ESF)**; **Cohesion Fund (CF)**; **European Agricultural Fund for Rural Development (EAFRD)**; and the **European Maritime and Fisheries Fund (EMFF)**.



Through four national programmes, Denmark has been allocated **EUR 1.25 billion** from ESI Funds over the period 2014-2020. With a national contribution of **EUR 722 million**, Denmark has a total budget of **EUR 1.97 billion** to be invested in various areas, from **SME support** to **social inclusion** as well as the **low-carbon economy** and **aquaculture**.

ESI FUNDS BUDGET FOR DENMARK (2014-2020)²

- **EUR 629 million** through the **EAFRD**
- **EUR 208 million** through the **EMFF**
- **EUR 207 million** through the **ERDF**
- **EUR 207 million** through the **ESF**



¹ Data included in this factsheet have been extracted from the ESIF Open Data platform which is accessible online at <https://cohesiondata.ec.europa.eu/>. Data on target achievements are based on officially agreed common indicators or, for the ESF, programme specific indicators (reference date for data: November 2015).

² Only those Member States with a gross national income (GNI) per inhabitant of less than 90 % of the EU average benefit from the Cohesion Fund. As such, Denmark is not eligible to benefit from the CF.

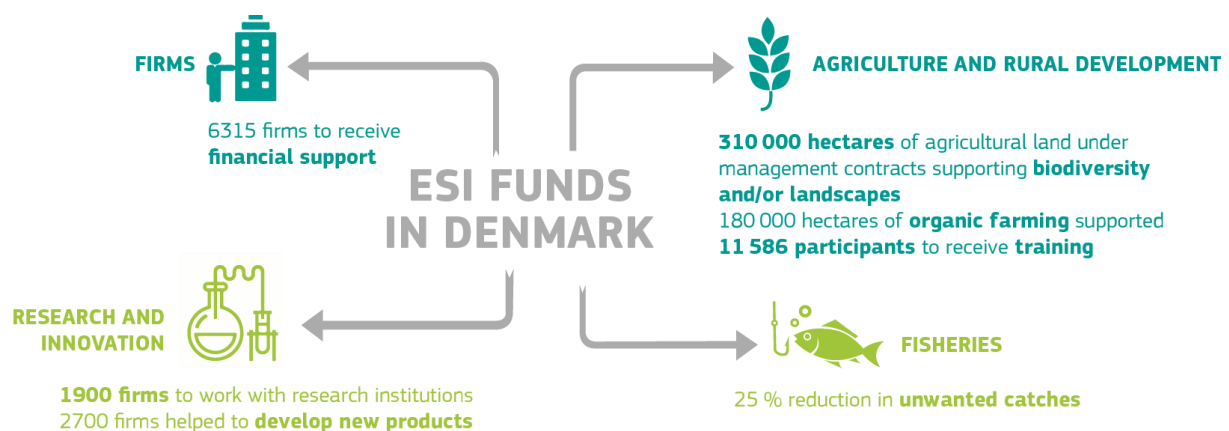
MAIN PRIORITIES

ESI FUNDS IN DENMARK WILL:

- Help **SMEs** in industry, services, **agriculture**, aquaculture and **fisheries** to be more innovative and better at turning innovation into profit, with support focusing on clusters and **cooperation networks**.
- Help people on the margins of the labour market and improve **employability** by helping more people to complete **vocational training** and higher education.
- Focus on **protecting** and preserving **natural assets**, improving water quality and biodiversity, and using cultivated land and fish stocks (including aquaculture) in an environment friendly and sustainable way.
- Improve **resource efficiency** as part of Denmark's strategy to increase business competitiveness, and the funds spent on competitiveness will also contribute to its transition to a **low-carbon economy**.

TARGETS

All funds are designed to support Denmark's **socio-economic development**. The expected results (**targets**) give an overall view of where Denmark should be on key parameters by 2020.



HOW WILL DENMARK ACHIEVE THE EXPECTED RESULTS?

Denmark will work towards the efficient spending of the EU Funds, based on a multidimensional approach.

FULFILLING PRECONDITIONS FOR THE EFFECTIVE AND EFFICIENT USE OF ESI FUNDS

To ensure that ESI Funds are used efficiently and focus on results, the Commission has set some preconditions when allocating ESI Funds to the Member States.

The main purpose of these conditions, also called 'ex-ante conditionalities', is to help all Member States and their regions to tackle issues that past experience has shown to be particularly relevant to the efficient implementation of the Funds. These principles could be linked, for example, to the implementation of EU legislation, the financing of strategic EU projects, or administrative evaluation and institutional capacity.

These ex-ante conditionalities cover most investment areas: improvements to regional research and innovation (R&I) strategies as well as strategic plans linked to environmental protection, energy resources, transport, socio-economic inclusion, health services, education and training.

ENCOURAGING THE USE OF FINANCIAL INSTRUMENTS AND TERRITORIAL TOOLS

- ERDF and ESF programmes are delivered through 6 regional growth fora, with the Danish Business Authority as the managing authority. The EAFRD and EMFF are both managed by the Danish AgriFish Agency, with the Leader actions implementation delegated to the Danish Business Authority, ensuring close coordination between the Funds.
- In addition, the two national managing authorities sit on each other's monitoring committee (for ERDF/ESF and EAFRD/EMFF respectively). Furthermore, the two managing authorities envisage coordinating meetings between the two sets of Funds in order to increase efficiency in their implementation. Although the ESF and the Fund for European Aid to the Most Deprived both have social inclusion objectives, the ESF is more labour-market-related. The two Funds avoid overlap thanks to the clear division between their respective objectives and by the two managing authorities being members of each other's monitoring committee.

SIMPLIFICATION FOR BENEFICIARIES

Potential beneficiaries will have electronic access to the management of the Fund (in line with the e-Cohesion initiative). Those who do not have immediate access to e-Cohesion will still be able to access it using alternative means. Denmark also envisages extending the use of the simplified costs options.

SUCCESS STORIES: EXAMPLES OF PROJECTS USING ESI FUNDS (2007-2013)

THE 100% RENEWABLE CITY

In 2007, the north Danish city of Frederikshavn set itself the ambitious goal of becoming the first European city to rely solely on renewable energy – and to achieve this by 2015. The pioneering Energibyen ('Energy City') initiative aims to create a 100% renewable energy system by tapping multiple energy sources rather than only one. It will offer green growth opportunities which are expected to have a significant positive impact on the city's economic attractiveness and development. The project gives priority to large energy infrastructure investments with positive spin-offs for the local economy and labour market, as well as to the involvement of local communities and citizens. As part of the initiative, a new digital modelling and visualisation tool has been developed to handle the complexity of such a 100% renewable energy system. This was co-financed by the ERDF, with some 2 480 000 DKK (EUR 333 365) provided between 2007 and 2011. It now forms the basis for strategic investment and scenario planning for the city's new energy supply and consumption model.

Total budget: **EUR 666 730**

EU Budget contribution to the project from ERDF: EUR 333 365

More information: <http://europa.eu/!dC96rN>

HOLD FAST

The 'Hold Fast' project played a major role in encouraging young Danes to stay on at school and get the qualifications they need for a good job. The project's integrated approach follows schoolchildren from before the age they enter secondary school to when they leave, with the focus on identifying those at most risk of dropping out. The aim is to help these young people participate fully in working life. The tools available include introductory courses to overcome fears, training and mentoring, and other insertion schemes. Since the summer of 2009, more than 20 000 young people from the Southern and Central Denmark regions have participated in project activities intended to facilitate the transition from primary to secondary education, as well as strengthen retention efforts and the completion rate. Approximately 2500 employees from 160 project partners have been directly involved in the project. The participating regions experienced a clear improvement in the so-called profile number, an indicator of young peoples' achievement in education.

Total budget: **EUR 6 284 000**

EU budget contribution to the project from ESF: EUR 3 031 000

More information: <http://europa.eu/!Uk43kh>

NEW SLAUGHTERHOUSE FOR ORGANIC POULTRY

A leading Danish company in the production of organic poultry decided to invest in building processing facilities to meet the increased demand for organic poultry. Slaughtering and processing organic chicken requires a separate processing line. The organic slaughterhouse is located in south-western Jutland, not far from the German border. The project demonstrated that it was possible to retain business activity in a remote rural area by focusing on high-quality food production which was also marketed towards consumers in city areas. The beneficiary is one of the few poultry producers to receive certification from the national animal protection organisation due to the good conditions for the poultry.

Total budget: **EUR 241 723**

EU budget contribution to the project from EAFRD: **EUR 96 689**

More information: http://enrd.ec.europa.eu/en/policy-in-action/rdp_view/

NETWORK FOR PHASING OUT FORMALIN IN DANISH AQUACULTURE

The project aimed at creating a producer network to phase out the use of formalin in Danish aquaculture. Formalin is an aqueous solution of formaldehyde, which is used to control external parasitic infections in fish. However, the drug has shown to be carcinogenic and allergenic. The project succeeded in raising awareness of this issue and resulted in a large number of fish farmers replacing formalin by less dangerous substitutes. Additionally, the project reinforced the cooperation and working relationship between fish farmers, veterinarians, consultants and researchers.

Total budget: **EUR 190 000**

EU budget contribution to the project from EFF: **EUR 95 000**

(During the 2007-2013 period, the EMFF was known as European Fisheries Fund or EFF)

More information: <http://www.danskakvakultur.dk/media/14095/>

FIND OUT MORE ABOUT ESI FUNDS IN DENMARK

- ESI Funds: <http://ec.europa.eu/esif>
- ESI Funds Open Data Platform: <https://cohesiondata.ec.europa.eu/countries/DK>
- ERDF: http://ec.europa.eu/regional_policy/en/atlas/denmark
- ESF: <http://ec.europa.eu/esf/main.jsp?catId=376&langId=en>
- EARDF: http://ec.europa.eu/agriculture/rural-development-2014-2020/country-files/index_en.htm
- EMFF: http://ec.europa.eu/fisheries/cfp/emff/index_en.htm
- The EU Representation in Denmark: http://ec.europa.eu/danmark/index_da.htm
- EU project examples: http://ec.europa.eu/budget/euprojects/search-projects/list_en
- Follow us on Twitter: @EU Regional @EU Social @EU Agri @EU Mare #ESIFunds