

# ESI FUNDS CONTRIBUTION TO COMMISSION PRIORITIES

## INTERNAL MARKET



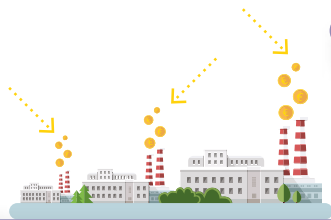
ESI Funds will support around **801 500 enterprises** and create approximately **354 300 new jobs**.



**7 515 km** of **railway lines**, of which 5 200 km belong to the TEN-T, will be reconstructed or upgraded.



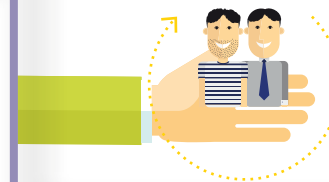
**396 500 SMEs** will receive funding to invest in human development and people skills through the ESF.



EAFRD will provide support to more than **3 000 innovation projects** under the European Innovation Partnership.



**2.9 million people** will gain a qualification on completing an ESF project.



**3.1 million unemployed or inactive young people** will be supported by the Young Entrepreneurs Initiative (YEI).