

REGIO EVALNET 20+21 May 19

Horizontal issues on indicators

#CohesionPolicy
#EUinmyRegion
#ESIFOpenData



Outline

- 1. General Principles**
- 2. Output indicators**
- 3. Result indicators**
- 4. Follow up planned**

Programming by Specific Objective

Inputs	Outputs	Results
EUR budget via Categorisation tables	Common and Specific Indicators	Common and Specific Result indicators

- **Concept of outputs: direct deliverables; reported when achieved**
- **Concept of results: outcome for beneficiary or users. What has changed as a direct result; reported when available**

General principles

- **Common indicator definitions + methodologies are mandatory within bounds explained in indicator fiche. National use may be more restrictive; not broader**
- **Indicator coverage, in principle, covers**
 - **all categories of expenditure 1) payments based on expenditure, 2) SCOs 3) payments not based on expenditure**
 - **A high proportion of all actions to “contribute to measuring overall performance” (CPR Art 12)**
- **Performance framework: PF methodology document can explain choice of indicators, data, coverage, calculation of targets and milestones, etc. (CPR Art 13)**
- **Cost of implementing the indicator system + collection is an eligible cost, either by programme or by beneficiary**
- **Are there mandatory common indicators for all Member states? No, but used when relevant (and proportionate)**

ERDF/CF – RCO : common output

Specific Objective 1	Actions / tasks
Programming	<ul style="list-style-type: none"> • Choose actions linked to needs and objectives + budget identified (Art 17) • Choose appropriate output indicators for actions: common or specific are listed in programme
	<ul style="list-style-type: none"> • Baselines: Not applicable • Milestones: Yes, for all outputs (0 is possibility) • Target: Yes, for all
	PF methodology document (Art 13) : explains criteria, data + evidence, calc. methods (i.e. of coverage, milestones, targets) factors and assumptions. (Available on request)
Prog. modification (Incl. update of Methodology for PF)	i.e. at mid term (5+2) => review indicator choice / revising targets
Monitoring	<ul style="list-style-type: none"> • At operation/project selection: <u>forecasts</u> • Regular reporting of <u>achieved</u> values: • Single operations/projects vs complex operations with multiple projects

ERDF/CF – RCO : common output

- **Narrative will be familiar**
- **Use of enterprise indicators: in multiple Specific Objectives is likely (proportionality / materiality)**
- **Programming of milestones and forecasts by SO may be in “gross” terms, do not have to take into account**
 - possible multiple supports into account (clarify in PF Methodology)
 - No breakdown of targets by size of enterprise, other sub indicators
- **Multiple counting (i.e. population / areas) to be dealt with in indicator fiche (and PF methodology)**

ERDF/CF – RCR common results

Specific Objective 1	
Programming	<ul style="list-style-type: none"> • Actions linked to needs and objectives + budget identified • appropriate result indicators for change expected for beneficiaries : common or specific are listed
	<ul style="list-style-type: none"> • Baselines: 0/>0 (where known or can be estimated) • Milestones: N/A • Target: Yes, for all
Prog. Modification (including methodology for PF)	i.e. at mid term. => choice of result indicators / correction of targets
Monitoring	<ul style="list-style-type: none"> • At project selection • Updating baseline based on pipeline • Regular reporting of forecast + achieved values (where relevant)

ERDF/CF – RCR common results /1

- **Common results a novel element for 2021-2027 ERDF/CF**
- **Narrative will be important for EC and MS / programmes**
 - Lags and delays in achievement, measurement and reporting of outputs and, even more so, of results for beneficiaries (cf. infrastructures)
 - No requirement for RCR milestone values, possible mid term modifications of targets
 - Possibility that for some results will only be available at closure (and then some results may not be measured) => need for evaluation
 - Distinction between what is possible using monitoring system and using evaluation
 - EU Comparability of RCR values will need to be kept under review, lessons learned

ERDF/CF – RCR common results /2

- **Timing of measurement and reporting by the operation: may vary depending on the specific RCR indicator from 1) moment of submitting final claim, 2) after 12 months of operation; 3) first annual reporting exercise after completion.**
- **But monitoring requirement should be limited in time.**
- **Ensuring that beneficiaries will answer one year after project completion: different strategies possible; further discussion, clarification needed.**
- **How to deal with possible data incompleteness: defining which set of beneficiaries is covered, full or partial; representative samples, generalising of results**

Follow-up planned

- **Consolidation of common indicators fiche in line with consultations**
- **EVALNET discussion / exchange of experiences**
 - Double counting of populations / areas
 - Improving synchronised data transmission
- **Workshops on**
 - Measuring reduction in CO2 eq. emission
 - Measuring transport result indicators

MS invited to submit short summaries of their existing methods by early September and identify experts.

Workshop dates will be confirmed as soon as possible

Reporting templates ERDF/CF indicators CPR, Annex VII



#CohesionPolicy
#EUinmyRegion
#ESIFOpenData

Examples of reporting

Example 1: Support to SMEs for innovation

Objective:
SME innovation

What ? Result::
**SME innovation
RCR03**

How ? Output::
**SME grants
RCO02**

How much::
**Intervention
field(s)**

Programming:

	Baseline in OP	Milestone (2024)	Target (2029)
RCO01	0	40	100
RCO02	0	40	100
RCR03	0		100

Example 1: Support to SMEs for innovation (continued)

Reporting in a given year, say 2023:

Outputs: Table 3 in Annex VII (simplified)

ID	Indicator breakdown (of which)	Milestone (2024)	Target (2029)	Forecast (31/12/2023)	Achieved (31/12/2023)
RCO01	Total	40	100	20	10
<i>RCO01a</i>	<i>Micro</i>				2
<i>RCO01b</i>	<i>Small</i>				4
<i>RCO01c</i>	<i>Medium</i>				4
<i>RCO01d</i>	<i>Large</i>				0
<i>RCO02</i>	<i>Total</i>	40	100	20	10

Result: Table 6 in Annex VII (simplified)

ID	Indicator breakdown (of which)	Baseline OP	Target (2029)	Baseline updated		Value	
				Forecast (31/12/2023)	Completed (31/12/2023)	Forecast (31/12/2023)	Completed (31/12/2023)
RCR03	Total	0	100	0	0	20	5

Example 2: Energy performance of dwellings

Objective:
Increase energy performance of dwelling

What ? Result::
**Primary electricity consumption
RCR26**

How ? Output::
**Support for dwelling renovation
RCO18**

How much::
Intervention field(s)

Programming:

	Baseline in OP	Milestone (2024)	Target (2029)
RCO18		80	200
RCR26	24		20

Assumptions:

- *Baseline: 120 kwh/year/dwelling*
- *Target: 100 kwh/year/dwelling*

Example 2: Energy performance of dwellings

(continued)

Reporting in a given year, say 2023:

Output: Table 3 in Annex VII *(simplified)*

ID	Indicator breakdown (of which)	Milestone (2024)	Target (2029)	Forecast (31/12/2023)	Achieved (31/12/2023)
RCO18	Total	80	200	60	40

Example 2: Energy performance of dwellings (continued)

Reporting in a given year, say 2023:

Result: Table 6 in Annex VII (simplified)

ID	Indicator breakdown (of which)	Baseline OP	Target (2029)	Baseline updated		Value	
				Forecast (31/12/2023)	Completed (31/12/2023)	Forecast (31/12/2023)	Completed (31/12/2023)
RCR26	Total	24	20	7,2	3,6	6	3
RCR26a	Dwellings				3,6		3
RCR26b	Public buildings				0		0
RCR26c	Enterprises				0		0
RCR26d	Other				0		0

- *If initial assumptions valid*
- *Projects selected for 60 dwellings (120kwh/year/dwelling)*
- *Projects completed for 40 dwellings, of which 30 dwellings in 2022 (100kwh/year/ dwelling)*



Tables in Annex VII CPR

Table 3 Reporting for output indicators *ERDF/ Cohesion Fund*

- ❑ Table 3, Annex VII, CPR proposal
- ❑ Column 13: "Based on Commission guidelines"
- ❑ Column 14: "Comments"
- ❑ Automatic data transfer to/ from SFC

Table 4 Reporting for Staff financed by ERDF and Cohesion Fund

- ❑ Table 4, Annex VII, CPR proposal – removed by the SMWP in Council

Table 5 Multiple support for enterprises *ERDF/ Cohesion Fund*

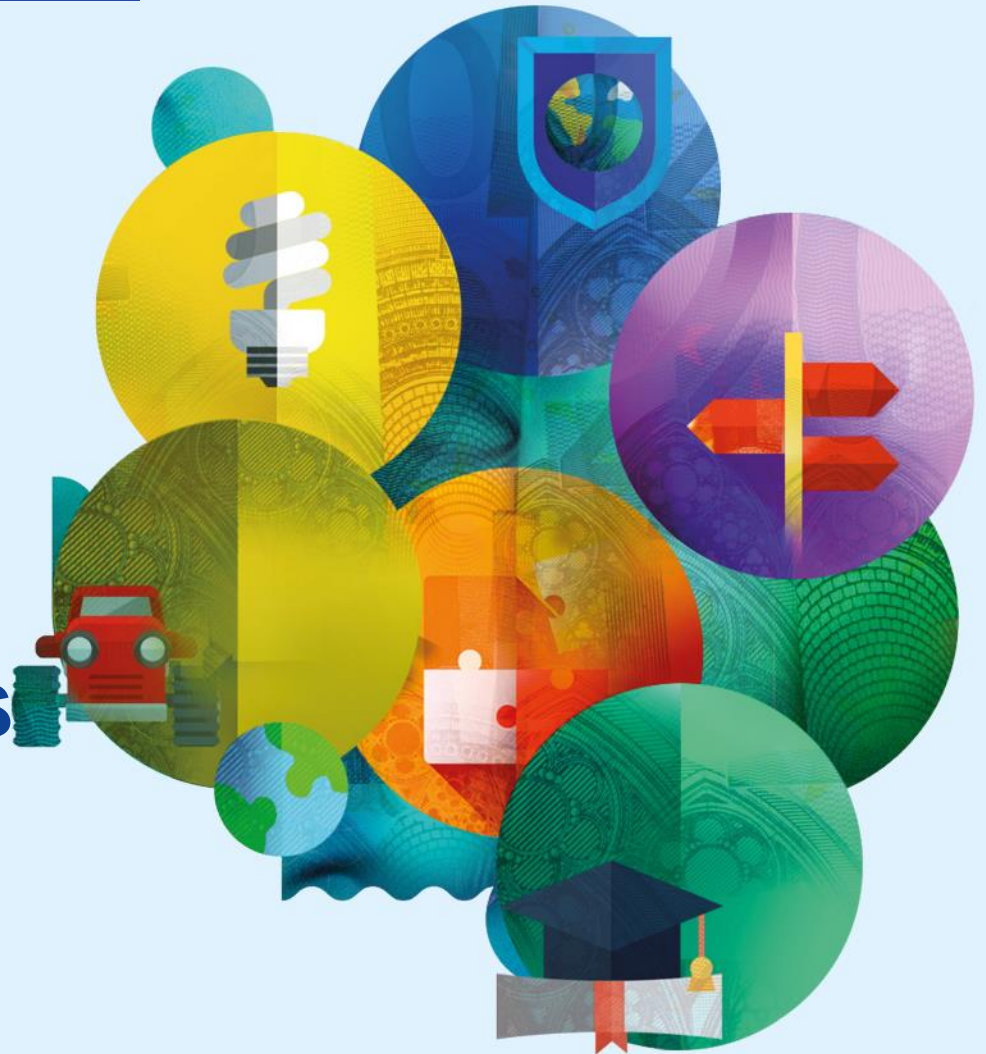
- Based on unique identifiers of enterprises
- Merge micro with small?*
- Type of enterprise – measured when?*

Table 6 Reporting for result indicators *ERDF/ Cohesion Fund*

- Method of calculation: updated baselines, forecast and completed values

REGIO EVALNET 20+21 May 19

Indicator fiche + Guidance requests



#CohesionPolicy
#EUinmyRegion
#ESIFOpenData

1. Revised indicator fiche

Row no.	Field	Description
0	Indicator Code	<i>Indicator code from Annex 1 ERDF&CF Regulation. Example: RCO01</i>
1	Indicator Name	<i>Name indicator from Annex 1 ERDF&CF Regulation</i>
2	Measurement unit	<i>Example: enterprises</i>
3	Baseline	0 or ≥ 0
4	Milestone 2024	≥ 0 or not required
5	Target 2029	> 0
6	Type	<i>Output/ Result</i>
7	Policy objective	<i>Example for RCO01: All policy objectives</i>
8	Specific objective	<i>Example for RCO01: All specific objectives</i>
10	Link to 2014-2020	<i>Example for RCO01: CO01</i>
11	Contribution to corporate indicators	<i>Example for RCO01: CCO01, CCO02, CCO04, CCO05</i>
12	Underlying definitions and concepts	<i>Provides the definition of the indicator and the main associated concepts.</i>
13	Data source	<i>Provides the data source used by the Managing Authority for data collection. Example: projects/ registries/ MA monitoring system etc.</i>
14	Time measurement	<i>Time when achieved values for the indicator are recorded in the monitoring system.</i>
15	Reporting	<i>Types of values to be reported (example: forecast for selected projects and achieved values); frequency and time of reporting; template for reporting (ex: CPR Annex VII, Table 3).</i>
16	Notes	<i>Other specific issues for the indicator. Example: Indicator RCO01 is based on the values recorded for indicators for the form of support RCO02, RCO03 and RCO03.</i>
17	References	<i>Reference to legislative texts, reports etc. relevant for the definition of the indicator.</i>
18	Example of calculation method	<i>Includes suggestions for the calculation method for the indicator.</i>

Fiche Comments /1 (n=6)

- **Each fiche should be independent of other fiche. Avoid requiring cross reading of several fiches to know what is exactly demanded**
- **Ensure fiche areprecise, detailed, practical with examples ...**
- **Fiche will need to be adapted and promoted in national contexts**

Fiche Comments /2

- **Pt 10 “link to 2014-2020” delete and add “Link to other 21-27 indicators”**
- **Pt 11 link to Annex II not necessary for MS.**
- **Merge Pts 12 +16**
- **Pt 13 : delete, will vary by national system / choice for RCR**
- **Pt 18: divided opinions**

- **Add “aggregation” field**
- **Add “short title” field**

2. Calls for guidance / explanations (n=10)

Main themes in MS comments on guidance

1. Utility of previous guidance
2. Programming : intervention rationale/ logic
3. Performance review: criteria, process, consequences
4. Evaluation: Planning; scope of techniques; 5 EC criteria;

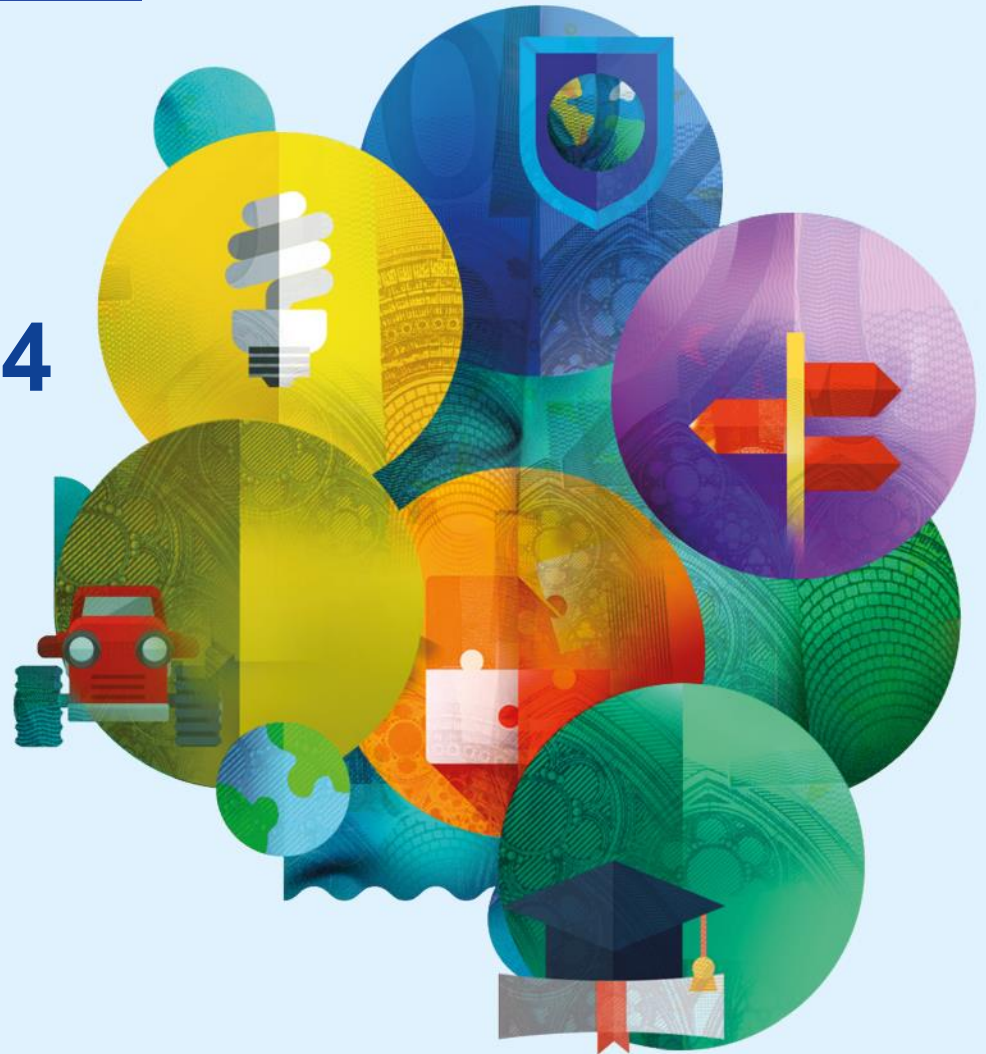
Other issues

1. Legal references, definitions, glossary

Commission position

- 1. Guidance is not generally planned: Commission takes seriously the need for simplification**
- 2. The common indicators will be describes and set out in indicator fiches and therefore the subject of guidance**
- 3. In legislative process explanatory fiche are produced where needed**
- 4. Interpretation of legislation as needed (after adoption)**
- 5. Formal programming should address issues of doubt, judgement, national context (i.e. PF methodology)**

Results of the MS consultations on indicators PO1-PO4



#CohesionPolicy
#EUinmyRegion
#ESIFOpenData

Annex I ERDF/ CF Indicators

Calendar and process

- ❑ Indicators Policy Objective 1: Dec 2018-Jan 2019
- ❑ Indicators Policy Objective 2: Feb-Mar, 2019
- ❑ Indicators Policy Objective 3+4: Mar-Apr 2019
- ❑ Interreg indicators: Feb 20, May 14, 2019
- ❑ Horizontal and Policy Objective 5 indicators: May 2019
- ❑ Full revised Annexes 1+2: May 22, 2019

Policy objective	Specific objective	Before consultations		After consultations	
		Outputs	Results	Outputs	Results
Policy Objective 1	1.i Enhancing research and innovation capacities and the uptake of advanced technologies	10	8	10	9
	1.ii Reaping the benefits of digitisation for citizens, companies and governments	3	4	2	3
	1.iii Enhancing growth and competitiveness of SMEs	1	5	2	4
	1.iv Developing skills for smart specialisation, industrial transition and entrepreneurship	4	5	2	2
	Total PO1	18	22	16	18

- ✓ Replies from 18 MS
- ✓ 95 pages comments

Indicators Policy Objective 1 – changes implied

<p>RCO¹01 - Enterprises supported (of which: micro, small, medium, large)* (enterprises)</p> <p>RCO 02 - Enterprises supported by grants* (enterprises)</p> <p>RCO 03 - Enterprises supported by financial instruments* (enterprises)</p> <p>RCO 04 - Enterprises with non-financial support* (enterprises)</p> <p>RCO 05 - New enterprises start-ups supported* (enterprises)</p> <p>RCO 06 - Researchers working in supported research facilities (annual full time equivalents (FTE))</p> <p>RCO 07 - Research institutions participating in joint research projects (institutions)</p> <p>RCO 08 - Nominal value of research and innovation equipment (euro)</p> <p>RCO 10 - Enterprises cooperating with research institutions (enterprises)</p> <p>RCO 96 – Interregional investments for innovation in EU projects EU projects* (euro)</p>	<p>RCR²01 - Jobs created in supported entities* (annual FTE)</p> <p>RCR 103 – Research jobs created in supported entities* (annual FTE)</p> <p>RCR 02 - Private investments matching public support (of which: grants, financial instruments)* (euro)</p> <p>RCR 03 – Small and medium-size enterprises³ (SMEs) introducing product or process innovation* (enterprises)</p> <p>RCR 04 - SMEs introducing marketing or organisational innovation* (enterprises)</p> <p>RCR 05 - SMEs innovating in-house* (enterprises)</p> <p>RCR 06 - Patent applications submitted to European Patent Office* (patents applications)</p> <p>RCR 07 - Trademark and design applications* (trademarks and design applications)</p> <p>RCR 08 - Publications from supported projects Public-private co-publications (publications)</p>
<p>RCO 12 – Enterprises supported to digitise their products and services (enterprises)</p> <p>RCO 13 - Value of digital services, products and processes developed for enterprises (euro) Digital services and products developed for enterprises (services and applications)</p> <p>RCO 14 - Public institutions supported to develop digital services products and processes and applications (institutions)</p>	<p>RCR 11 - Users of new and upgraded public digital services, products and processes services and applications* (users/year)</p> <p>RCR 12 - Users of new and upgraded digital services, products and processes products, services and applications developed by enterprises* (users/year)</p> <p>RCR 13 - Enterprises reaching high digital intensity* (enterprises)</p> <p>RCR 14 – Enterprises using public digital services*</p>
<p>RCO 15 - Capacity of incubation created* (enterprises)</p> <p>RCO 103 - High growth enterprises supported* (enterprises)</p>	<p>RCR 16 – High growth enterprises supported* (enterprises)</p> <p>RCR 17 – New 3-year old enterprises surviving in the market* (enterprises)</p> <p>RCR 18 - SMEs using incubator services after incubator creation one year after the incubator creation (enterprises)</p> <p>RCR 19 - Enterprises with higher turnover* (enterprises)</p> <p>RCR 25 – SMEs with higher value added per employee* (enterprises) Value added per employee in supported SMEs* (euro/employee)</p>

¹ RCO: REGIO Common Output Indicator.

² RCR: REGIO Common Result Indicator.

³ Commission Recommendation of 6 May 2003 concerning the definition of micro, small and medium-sized enterprises (notified under document number C(2003) 1422) (OJ L 124, 20.5.2003, p. 36).

Policy objective	Specific objective	Before consultations		After consultations	
		Outputs	Results	Outputs	Results
Policy objective 2	2.i Promoting energy efficiency measures	3	5	4	2
	2.ii Promoting renewable energy	2	2	2	2
	2.iii Developing smart energy systems, grids and storage at local level	2	2	2	2
	2.iv Promoting climate change adaptation, risk prevention and disaster resilience	5	5	6	4
	2.v Promoting sustainable water management	3	4	3	3
	2.vi Promoting the transition to a circular economy	1	4	2	3
	2.vii Enhancing biodiversity, green infrastructure in the urban environment and reducing pollution	5	4	4	3
	2.viii Promoting sustainable multimodal urban mobility	6	3	6	3
	Total PO2	27	29	29	22

- ✓ Replies from 18 MS
- ✓ 119 pages comments

Indicators Policy Objective 2 – changes implied

<p>RCO 18 – Dwellings with improved Households supported to improve energy performance (<i>dwellings</i>)</p> <p>RCO 19 - Public buildings with improved supported to improve energy performance (<i>square metres</i>)</p> <p>RCO 20 - District heating and cooling network lines newly constructed or improved (<i>km</i>)</p> <p>RCO 104 – Number of high efficiency co-generation units (<i>units</i>)</p>	<p>RCR 26 - Annual primary final energy consumption (of which: dwellings public buildings, enterprises, other residential, private non-residential, public non-residential) (<i>MWh/year</i>)</p> <p>RCR 27 – Households with improved energy performance of their dwellings</p> <p>RCR 28 – Buildings with improved energy classification (of which: residential, private non-residential, public non-residential)</p> <p>RCR 29 - Estimated greenhouse gas emissions* (<i>tons of CO2eq/ year</i>)</p> <p>RCR 30 – Enterprises with improved energy performance</p>
<p>RCO 22 - Additional production capacity for renewable energy (of which: electricity, thermal) (<i>MW</i>)</p> <p>RCO 97 – Number of energy communities and Renewable energy communities supported* (<i>RES communities</i>)</p>	<p>RCR 31 - Total renewable energy produced (of which: electricity, thermal) (<i>MWh/year</i>)</p> <p>RCR 32 – Additional operational capacity installed for renewable energy: Capacity connected to the grid (operational) (<i>MW</i>)*</p>
<p>RCO 23 - Digital management systems for smart grids energy systems (<i>digital management systems</i>)</p> <p>RCO 98 – Households supported to use smart energy grids</p> <p>RCO98 – Solutions for electricity storage (MWh)</p>	<p>RCR 33 - Users connected to smart grids electricity systems (<i>users</i>)</p> <p>RCR 34 - Roll-out of projects for smart grids electricity systems (<i>projects</i>)</p>
<p>RCO 24 – Investments in new or upgraded disaster monitoring, preparedness, warning and response systems (<i>euro</i>)</p> <p>RCO 25 - Coastal strip, river bank and lakeshore, and landslide flood protection newly built or consolidated to protect people, assets and the natural environment (<i>km</i>)</p> <p>RCO 105 – Landslide protection newly built or consolidated (<i>hectares</i>)</p> <p>RCO 26 - Green infrastructure built or upgraded for adaptation to climate change* (<i>hectares</i>)</p> <p>RCO 27 – National and sub-national / regional/ local strategies addressing climate change adaptation* (<i>strategies</i>)</p> <p>RCO 28 - Areas covered by protection measures against wild forest fires (<i>hectares</i>)</p>	<p>RCR 35 - Population benefiting from flood protection measures (<i>persons</i>)</p> <p>RCR 36 - Population benefiting from wild forest fire protection measures (<i>persons</i>)</p> <p>RCR 37 - Population benefiting from protection measures against climate related natural disasters (other than floods and wild forest fires) (<i>persons</i>)</p> <p>RCR 96 – Population benefiting from protection measures against non-climate related natural risks and risks related to human activities* (<i>persons</i>)</p> <p>RCR 38 – Estimated average response time to disaster situations*</p>

Indicators Policy Objective 2 – changes implied

<p>RCO 30 - Length of new or consolidated upgraded pipes for the distribution systems of public water supply household water connections- (km)</p> <p>RCO 31 - Length of new or upgraded pipes for the public network for collection of waste water sewage collection networks newly constructed or consolidated (km)</p> <p>RCO 32 - New or upgraded capacity for waste water treatment (population equivalent)</p>	<p>RCR 41 - Population connected to improved public water supply (persons)</p> <p>RCR 42 - Population connected to at least secondary waste water treatment (persons)</p> <p>RCR 43 - Water losses in distribution systems for public water supply (cubic metres/ year)</p> <p>RCR 44 - Waste water properly treated</p>
<p>RCO 34 - Additional capacity for waste recycling (tonnes)</p> <p>RCO 106 – Investments in facilities for separate waste collection (euro)</p>	<p>RCR 46 – Population served by waste recycling facilities and small waste management systems</p> <p>RCR 104 – Waste collected separately (tonnes/ year)</p> <p>RCR 47 - Waste recycled (tonnes/ year)</p> <p>RCR 48 - Recycled Waste used as raw materials (tonnes/ year)</p> <p>RCR 49 – Waste recovered</p>
<p>RCO 36 - Surface area of Green infrastructure supported in urban areas (hectares)</p> <p>RCO 37 - Surface of Natura 2000 sites covered by protection and restoration measures in accordance with the prioritised action framework (hectares)</p> <p>RCO 99 – Surface area outside Natura 2000 sites covered by protection and restoration measures</p> <p>RCO 38 - Surface area of rehabilitated land supported (hectares)</p> <p>RCO 39 – Area covered by systems for monitoring air pollution installed (hectares)</p>	<p>RCR 50 - Population benefiting from measures for air quality* (persons)</p> <p>RCR 95 -Population having access to new or upgraded improved green infrastructure in urban areas* (persons)</p> <p>RCR 51 – Population benefiting from measures for noise reduction</p> <p>RCR 52 - Rehabilitated land used for green areas, social housing, economic or community activities other uses (hectares)</p>
<p>RCO 55 - Length of new or modernised tram and metro lines (km)</p> <p>RCO 56 - Length of reconstructed or modernised upgraded tram and metro lines (km)</p> <p>RCO 57 – Capacity of environmentally friendly rolling stock for collective public transport (places)</p> <p>RCO 58 - Dedicated cycling infrastructure supported (km)</p> <p>RCO 59 - Alternative fuels infrastructure (refuelling/ recharging points* (recharging points)</p> <p>RCO 60 - Cities and towns with new or upgraded modernised digitised urban transport systems (cities and towns)</p>	<p>RCR 62 - Annual users passengers of new or modernised public transport (users/ year)</p> <p>RCR 63 - Annual users of new or modernised upgraded tram and metro lines (users/ year)</p> <p>RCR 64 - Annual users of dedicated cycling infrastructure (users/ year)</p>

Policy objective	Specific objective	Before consultations		After consultations	
		Outputs	Results	Outputs	Results
Policy objective 3	3.i Enhancing digital connectivity	2	2	2	2
	3.ii Developing a sustainable, climate resilient, intelligent, secure and intermodal TEN-T	5	7	7	6
	3.iii Developing sustainable, climate resilient, intelligent and intermodal national, regional and local mobility, including improved access to TEN-T and cross-border mobility	9		9	
	Total PO3	16	9	18	8

- ✓ Replies from 20 MS
- ✓ 69 pages comments

Indicators Policy Objective 3 – changes implied

<p>RCO 41 - Additional dwellings households with broadband access of very high capacity (<i>dwelling</i>s)</p> <p>RCO 42 - Additional enterprises with broadband access of very high capacity (<i>enterprises</i>)</p>	<p>RCR 53 - Dwellings households with broadband subscriptions to a very high capacity network (<i>dwelling</i>s)</p> <p>RCR 54 - Enterprises with broadband subscriptions to a very high capacity network (<i>enterprises</i>)</p>
<p>RCO 43 - Length of new or upgraded roads supported - TEN-T (<i>km</i>)¹</p> <p>RCO 45 - Length of roads reconstructed or modernised upgraded - TEN-T (<i>km</i>)</p> <p>RCO 106 – Length of roads with new or modernised traffic management systems – TEN-T (<i>km</i>)</p> <p>RCO 47 - Length of new or upgraded rail supported - TEN-T (<i>km</i>)</p> <p>RCO 49 - Length of rail reconstructed or modernised upgraded - TEN-T (<i>km</i>)</p> <p>RCO 51 - Length of new, upgraded or modernised inland waterways - TEN-T (<i>km</i>)</p> <p>RCO 107 - Length of European Rail Traffic Management System equipped railways in operation – TEN-T (<i>km</i>)</p>	<p>RCR 55 – Annual users of newly built, reconstructed, upgraded or modernised roads (<i>user-km/year</i>)</p> <p>RCR 56 - Time savings due to improved road infrastructure (<i>person-years</i>)</p> <p>RCR 101- Time savings due to improved rail infrastructure (<i>person-years</i>)</p> <p>RCR 57 – Length of European Rail Traffic Management System equipped railways in operation</p> <p>RCR 58 - Annual users of newly built, upgraded, reconstructed or modernised railways (<i>users-km/year</i>)</p> <p>RCR 59 - Freight transport on rail (<i>tonnes-km/year</i>)</p> <p>RCR 60 - Freight transport on inland waterways (<i>tonnes-km/year</i>)</p>
<p>CO 44 - Length of new or upgraded roads supported – non-TEN-T (<i>km</i>)</p> <p>RCO 46 - Length of roads reconstructed or modernised upgraded - non-TEN-T (<i>km</i>)</p> <p>RCO 108 – Length of roads with new or modernised traffic management systems – non-TEN-T (<i>km</i>)</p> <p>RCO 48 - Length of new or upgraded rail supported - non-TEN-T (<i>km</i>)</p> <p>RCO 50 - Length of rail reconstructed or modernised upgraded - non-TEN-T (<i>km</i>)</p> <p>RCO 109 - Length of European Rail Traffic Management System equipped railways in operation – non-TEN-T (<i>km</i>)</p> <p>RCO 52 - Length of new or modernised upgraded inland waterways - non-TEN-T (<i>km</i>)</p> <p>RCO 53 – New or modernised railway stations and stops facilities (<i>railway stations and stops</i>)</p> <p>RCO 54 – New or modernised upgraded intermodal connections* (<i>intermodal nodes</i>)</p> <p>RCO 100 – Number of ports supported</p>	

¹ Regulation (EU) No 1315/2013 of the European Parliament and of the Council of 11 December 2013 on Union guidelines for the development of the trans-European transport network and repealing Decision No 661/2010/EU (OJ L 348, 20.12.2013, p. 1).

Policy objective	Specific objective	Before consultations		After consultations	
		Outputs	Results	Outputs	Results
Policy objective 4	4.i Enhancing effectiveness of labour markets and access to quality employment through infrastructure	1	1	1	1
	4.ii Improving access to inclusive and quality services in education, training and lifelong learning through developing social innovation and infrastructure	2	2	2	2
	4.iii Increasing the socio-economic integration of marginalised communities, migrants and disadvantaged groups, through integrated measures including housing and social services	3	3	2	2
	4.iv Ensuring equal access to health care through developing infrastructure	2	4		3
	Total PO4	8	10	5	8

- ✓ Replies from 18 MS
- ✓ 44 pages comments

Indicators Policy Objective 4 – changes implied

<p>RCO 61 – <u>Surface of new or modernised facilities</u> Annual unemployed persons served by enhanced-for employment services (<i>square metres</i>)</p>	<p>RCR 65 – Job seekers using annually the services of the <u>Annual users of new or modernised facilities for</u> employment services (<i>users/ year</i>)</p>
<p>RCO 66 - Classroom capacity of <u>new or modernised supported</u> childcare <u>facilities</u> infrastructure (<i>new or upgraded</i>) (<i>persons</i>)</p> <p>RCO 67 - Classroom capacity of new or modernised education facilities supported education infrastructure (<i>new or upgraded</i>) (<i>persons</i>)</p>	<p>RCR 70 - Annual number of children using childcare infrastructure supported users of new or modernised childcare facilities (<i>users/ year</i>)</p> <p>RCR 71 - Annual <u>users of new or modernised</u> number of students using education facilities (<i>users/ year</i>)</p>
<p>RCO 63 - Capacity of <u>new or modernised</u> temporary reception <u>facilities</u> infrastructure created (<i>persons</i>)</p> <p>RCO 64 – Capacity of rehabilitated housing – migrants, refugees, and persons under or applying for international protection</p> <p>RCO 65 - Capacity of <u>new or modernised social</u> rehabilitated housing – other (<i>persons</i>)</p>	<p>RCR 66 – <u>Annual users of new or modernised temporary reception facilities</u> Occupancy of temporary reception infrastructure built or renovated (<i>users/ year</i>)</p> <p>RCR 67 - <u>Annual users of new or modernised social housing</u> Occupancy of rehabilitated housing – migrants, refugees, and persons under or applying for international protection (<i>users/ year</i>)</p> <p>RCR 68 – Occupancy of rehabilitated housing – other</p>
<p>RCO 69 - Capacity of <u>new or modernised supported</u> health care <u>facilities</u> infrastructure (<i>visits/ year</i>)</p> <p>RCO 70 - Capacity of <u>new or modernised supported</u> social care <u>facilities</u> infrastructure – <u>(other than housing)</u> (<i>persons</i>)</p>	<p>RCR 72 – People with access to improved <u>Annual users of new or modernised e</u>-health care services (<i>users/ year</i>)</p> <p>RCR 73 - Annual users of number of persons using <u>new or modernised</u> health care facilities supported (<i>users/ year</i>)</p> <p>RCR 74 - Annual users of number of persons using <u>new or modernised</u> social care facilities supported (<i>users/ year</i>)</p> <p>RCR 75 – Average response time for medical emergencies in the area supported</p>

Policy objective	Specific objective	Before consultations		After consultations	
		Outputs	Results	Outputs	Results
Total PO1 - PO4		69	70	68	56

- Changes in names for clarification
- Changes in scope of the indicator
- Change in measurement unit
- Demarcation rules
- Clarification of terms and concepts
- Removal of indicators
- Replacement of existing with new indicators
- Addition of indicator (1 in 1 out)
- Shifts from results to outputs

***Annex II Core performance
indicators ERDF/ CF***

Annex II PO1 – changes implied

Policy objective (1)	Specific objective (2)	Outputs (3)	Results (4)
1. A smarter Europe by promoting innovative and smart economic transformation	(i) Enhancing research and innovation capacities and the uptake of advanced technologies	CCO 01 - Enterprises supported to innovate CCO 02 - Researchers working in supported research facilities	CCR 01 – Small and medium-sized enterprises (SMEs) introducing product, process, marketing or organisational innovation
	(ii) Reaping the benefits of digitisation for citizens, companies and governments	CCO 03 - Enterprises and public institutions supported to develop digital products, services and <u>processes</u> applications	CCR 02 - Annual users of new <u>or upgraded</u> digital products, services and applications <u>processes</u>
	(iii) Enhancing growth and competitiveness of SMEs	CCO 04 – SMEs supported to <u>enhance growth and competitiveness</u> create jobs and growth	CCR 03 - Jobs created in SMEs supported
	(iv) Developing skills for smart specialisation, industrial transition and entrepreneurship	CCO 05 – SMEs investing in skills <u>for smart specialisation</u> development	CCR 04 – SMEs staff <u>completing</u> benefiting from training for skills <u>for smart specialisation</u> development

Annex II PO2 – changes implied

2. A greener, low-carbon Europe by promoting clean and fair energy transition, green and blue investment, the circular economy, climate adaptation and risk prevention and management	(i) Promoting energy efficiency measures	CCO 06 – Investments in measures to improve energy <u>performance</u> efficiency	CCR 05 – Savings in annual primary energy consumption Beneficiaries with improved energy classification
	(ii) Promoting renewable energy	CCO 07 - Additional production capacity for renewable energy Additional renewable energy production capacity	CCR 06 – Volume of Additional renewable energy produced
	(iii) Developing smart energy systems, grids and storage at local level	CCO 08 - Digital management systems for smart <u>energy systems</u> grids	CCR 07 - Additional users connected to smart <u>energy systems</u> grids
	(iv) Promoting climate change adaptation, risk prevention and disaster resilience	CCO 09 – Investments in new or upgraded disaster monitoring, <u>preparedness</u> , warning and response systems	CCR 08 - Additional population benefiting from protection measures against floods, <u>wild forest</u> fires, and other climate related natural disasters
	(v) Promoting sustainable water management	CCO 10 - New or upgraded capacity for waste water treatment	CCR 09 - Additional population connected to at least secondary waste water treatment
	(vi) Developing the circular economy	CCO 11 – New or upgraded capacity for waste recycling	CCR 10 - Additional waste recycled
	(vii) Enhancing biodiversity, green infrastructure in the urban environment, and reducing pollution	CCO 12 - Surface area of green infrastructure in urban areas	CCR 11 - Population benefiting from measures for air quality
	(viii) Promoting sustainable multimodal urban mobility	CCO 16 - Extension and modernisation of tram and metro lines	CCR 15 - Annual users served by new and modernised tram and metro lines

Annex II PO3 – changes implied

3. A more connected Europe by enhancing mobility and regional ICT connectivity	(i) Enhancing digital connectivity	CCO 13 - Additional <u>dwelling</u> s households and enterprises with <u>broadband access of very high capacity</u> coverage by very high capacity broadband networks	CCR 12 - Additional <u>dwelling</u> s households and enterprises with broadband subscriptions to a very high capacity network
	(ii) Developing a sustainable, climate resilient, intelligent, secure and intermodal TEN-T	CCO 14 – Road TEN-T: New, upgraded, <u>reconstructed, or modernised</u> roads CCO 15 – Rail TEN-T: New, upgraded, <u>reconstructed, or modernised</u> railways	CCR 13 - Time savings due to improved road infrastructure CCR 14 - Annual number of passengers served by improved rail transport
	(iii) Developing sustainable, climate resilient, intelligent and intermodal national, regional and local mobility, including improved access to TEN-T and cross-border mobility	CCO 22 – Road non-TEN-T: New, upgraded, <u>reconstructed, or modernised</u> roads CCO 23 – Rail non-TEN-T: New, upgraded, <u>reconstructed, or modernised</u> railways	

Annex II PO4 – changes implied

<p>4. A more social Europe by implementing the European Pillar of Social Rights</p>	<p>(i) Enhancing the effectiveness of labour markets and access to quality employment through developing infrastructure</p>	<p>CCO 17 – Surface of new or modernised facilities for employment services Annual unemployed persons served by enhanced facilities for employment services</p>	<p>CCR 16 – Job seekers using annually enhanced Annual users of new or modernised facilities for employment services</p>
	<p>(ii) Improving access to inclusive and quality services in education, training and lifelong learning through developing social innovation and infrastructure</p>	<p>CCO 18 - New or modernised upgraded capacity for childcare and education facilities</p>	<p>CCR 17 - Annual users served by new or modernised upgraded childcare and education facilities</p>
	<p>(iii) Increasing the socio-economic integration of marginalised communities, migrants and disadvantaged groups, through integrated measures including housing and social services;</p>	<p>CCO 19 – <u>New or modernised capacity of temporary reception and social housing facilities</u> Additional capacity of reception infrastructures created or upgraded</p>	<p>CCR 18 - Annual users of new or <u>modernised temporary reception and social housing facilities</u> by new and improved reception and housing facilities</p>
	<p>(iv) Ensuring equal access to health care through developing infrastructure</p>	<p>CCO 20 - New or modernised upgraded capacity for health care facilities infrastructure</p>	<p>CCR 19 – <u>Annual users of new or modernised health care facilities</u> Population with access to improved health care services</p>

Next steps:

- ❑ Presentations + minutes consultations online
- ❑ Updated fiches Annex I: Sept 2019
- ❑ Workshops on methodologies: Dec 2019