



GOVERNMENT
OF MALTA

MINISTRY FOR FINANCE
AND EMPLOYMENT
PARLIAMETARY SECRETARIAT
FOR EUROPEAN FUNDS



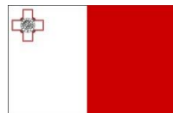
EU funds
for Malta
2014-2020



VASTE PROGRAMME ESF.02.048

INFORM EU Network Delegates

24th May 2022



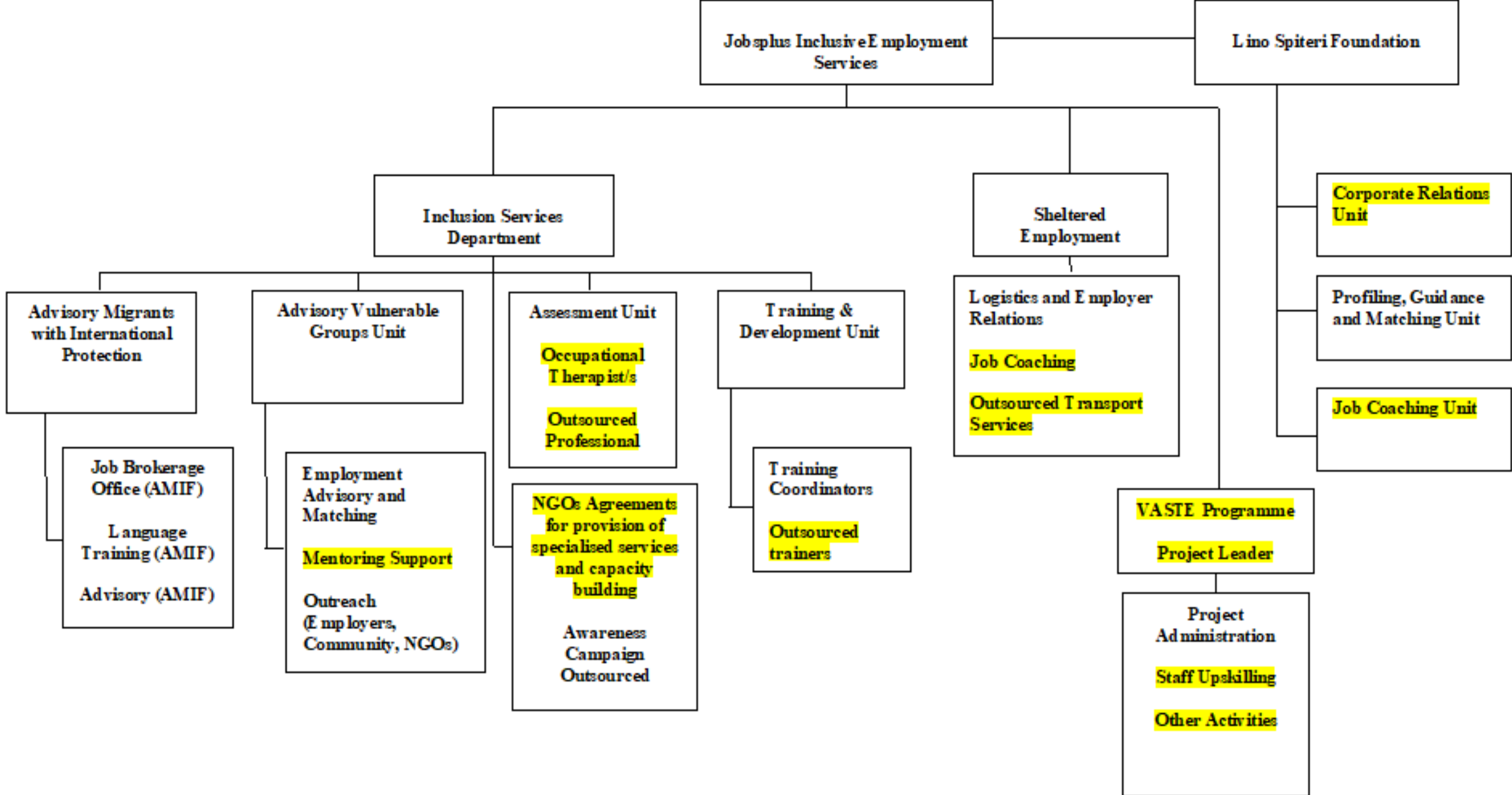
Operational Programme II - European Structural and Investment Funds 2014-2020
"Investing in human capital to create more opportunities and promote the well-being of society"

Project part-financed by the European Social Fund
Co-financing rate: 80% European Union; 20% National Funds



Activities and Services provided through the VASTE Programme

- ▶ Organigram & Identification of Roles
- ▶ General Information
- ▶ VASTE Programme Flowchart
- ▶ Video
- ▶ Assessments
- ▶ Sheltered Employment Training
- ▶ Profiling, Guidance & LSF Headstart Programme
- ▶ Corporate Relations & Job Coaching/Mentoring / Video
- ▶ Training
- ▶ Agreements with NGOs
- ▶ Other Activities
- ▶ Statistics

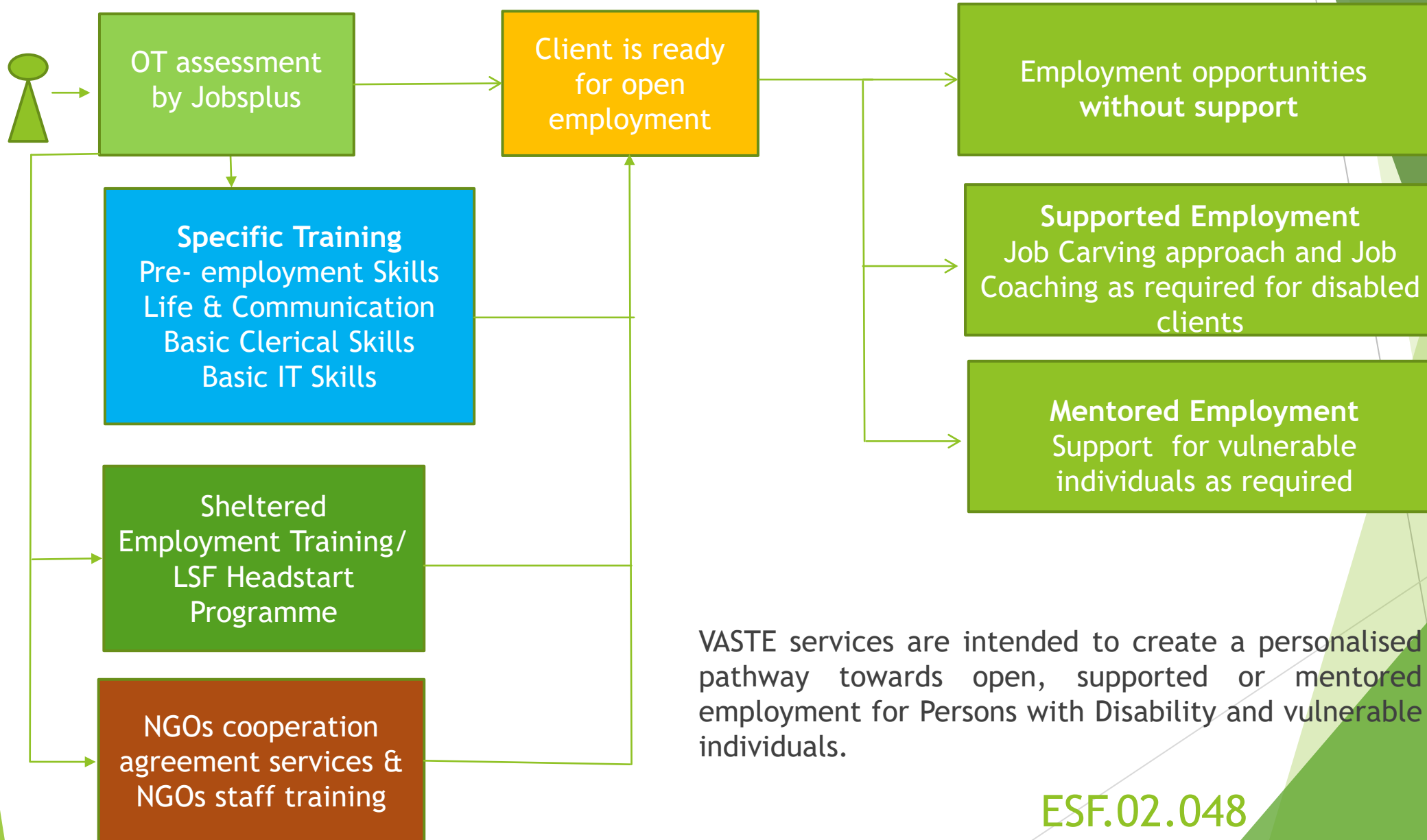


General Information

Jobsplus Inclusive Employment Services is accountable for the meaningful entry into gainful occupation of former substance abusers, former inmates and other socially-challenged individuals, persons with disability, long term unemployed and migrants with an international protection status.

The ESF VASTE Programme is being implemented in partnership with the Lino Spiteri Foundation (LSF) till end December 2022 with a budget of circa €13 million. As at end March 2022, a total of 2006 unique participants (30% female) from these target groups benefited from the following activities and services. 1197 (60%) are registered disabled persons, 767 (38%) are vulnerable individuals and 42 (2%) are long term unemployed.

VASTE PROGRAMME (2016 - 2022)



VASTE services are intended to create a personalised pathway towards open, supported or mentored employment for Persons with Disability and vulnerable individuals.

ESF.02.048



Assessment

The different assessments available with the use various assessment tools aim to provide accurate and reliable information about each individual clients' cognitive, emotional, physical and vocational capacity as well as indicating the appropriate support and training required.

Sheltered Employment Training

Persons with disability receive hands-on training in different work-related tasks such as back-office work, assembly of products, packaging material, sorting etc. During the one-year programme, clients work within groups assisted by job coaches. This initiative offers the opportunity to the very weakest to progress towards supported or open employment.

Profiling, Guidance & LSF Headstart Programme

Profiling & Guidance

- ▶ A profile is created for each client's detailing skills, competencies, interests and employment preferences. An action plan is formulated, clients are referred to various training activities and schemes.

LSF Head Start Programme

- ▶ The Head Start Programme is to serve as a launch pad into employment. It is aimed at equipping clients with the basics of work ethic; communication skills, teamwork and varied activities such as; practical tasks that require physical/ hand dexterity; practical sessions on computing and IT apps relevant to a working adult.

Corporate Relations, Job Coaching & Mentoring

(These were included in the EU PES Practice Database April 2018)

Corporate Relations

- ▶ The CR executives outreach and liaise with companies. Through job carving they strive to create employment opportunities for the jobseekers by analysing the enterprise requirements and operation/workflow. The LSF CR executives identify elements & tasks from existing jobs in the enterprise to design a new job or a workflow that can integrate a person with disability or a mixed-ability group of persons with disabilities.

Job Coaching/Mentoring

- ▶ Job coaching and mentoring services are provided as needed in addition to work exposure schemes and financial incentives. The objective is to ensure that these individuals not only obtain a job but also manage to retain it.



Training

- ▶ Specific classroom-based employability training include:
 - Pre-employment Skills (interview skills, job search technique, etc);
 - Life & Communication skills;
 - Basic ICT Skills;
 - Basic Clerical Skills.
- ▶ Pre Employment training courses are accredited at Level 1 (2 ECVET points) from Malta Further & Higher Education Authority.
- ▶ Jobsplus provides transport services throughout these training courses as required.

Agreements with NGOs

Specialised services and support

- ▶ Employability skills training, placement and monitoring services to unemployed substance abusers during their rehabilitation programme;
- ▶ Psychotherapy, social work and counselling services to other vulnerable jobseekers to resolve issues hindering their employability;
- ▶ Monitoring of employed substance abusers during their re-entry in employment/self-employment following rehabilitation.

NGOs Staff Training

- ▶ Support in capacity building through training of professionals working with adults.

Other Activities:

- ▶ **Document Management Project** was specifically created to increase the employment of persons with disability in Gozo.
 - 60 Gozitan Disabled Persons in employment supported by LSF Job Coaches.
 - Currently 14 public entities are benefiting from this Project.
- ▶ **Training of Staff** - To enhance their knowledge about specific traits of potential participants and to encourage the use of different approaches/tools.
- ▶ **Information Sessions for Employers** - To become aware of the support structures and services available.
- ▶ **Awareness Campaign** - Conveyed specific messages to reach out to inactive individuals and employers.

Awareness Campaign

Benefits and assistance available to employers to facilitate the employment of Persons with Disability and Vulnerable Individuals.

Jobsplus | jobsplus.gov.mt | 1711

Operational Programme 3 - European Structural and Investment Funds 2014-2020
"Investing in human capital to create more opportunities and promote the well-being of society"
Project part-financed by the European Social Fund
Co-financing rate: 80% European Union Funds; 20% National Funds

SUPPORT TO EMPLOYERS
VULNERABLE & DISABLED EMPLOYEES

- JOB COACHING / MENTORING
- WORK EXPOSURES
- PROFESSIONAL SUPPORT
- FINANCIAL SUPPORT
- CORPORATE RELATIONS TEAM

JOBSP+ VASTE_WEB BANNER 2 DRAFT3
Jobsplus | www.jobsplus.gov.mt | 1711

Operational Programme 3 - European Structural and Investment Funds 2014-2020
"Investing in human capital to create more opportunities and promote the well-being of society"
Project part-financed by the European Social Fund
Co-financing rate: 80% European Union Funds; 20% National Funds

SIBNA L-GHAJNUNA B'TAHRIG U SAPPORT ADDATTAT

1711

Operational Programme 3 - European Structural and Investment Funds 2014-2020
"Investing in human capital to create more opportunities and promote the well-being of society"
Project part-financed by the European Social Fund
Co-financing rate: 80% European Union Funds; 20% National Funds

Ghadajt minn perjodu diffiċli u trid issib xoghol? Cempel illi Jobsplus, Programm VASTE

Jobsplus | jobsplus.gov.mt | 1711

Operational Programme 3 - European Structural and Investment Funds 2014-2020
"Investing in human capital to create more opportunities and promote the well-being of society"
Project part-financed by the European Social Fund
Co-financing rate: 80% European Union Funds; 20% National Funds

SHELTERED EMPLOYMENT TRAINING
JOB CARVING

PROFESSIONAL SERVICES
CORPORATE RELATIONS

EMPLOYMENT




JOB CRAFTING
JOB COACHING

1711

Operational Programme 3 - European Structural and Investment Funds 2014-2020
"Investing in human capital to create more opportunities and promote the well-being of society"
Project part-financed by the European Social Fund
Co-financing rate: 80% European Union Funds; 20% National Funds

ENABLING INCLUSION THROUGH EMPLOYMENT
The Life Skills Foundation

Information Sessions

MINISTRY FOR EDUCATION AND EMPLOYMENT
 PARLIAMENTARY SECRETARIAT
 FOR EUROPEAN FUNDS AND SOCIAL DIALOGUE

EMPLOYERS INFO SESSION

ACCESS
 valuable information on support services available



BUILD
 internal capacity to professionally assist vulnerable individuals and disabled persons at the workplace

CAPITALIZE
 from fiscal and other incentives linked with the employment of new/current vulnerable individuals and disabled persons

Next session will be held on the 6th November 2019 at 13.30

Stay ahead of the Game and join the leaders that promote the Employment of Vulnerable individuals and Disabled persons

Reserve a spot now ✉ set.jobplus@gov.mt ☎ 2220 1722

ENABLING INCLUSION THROUGH EMPLOYMENT
The Skills Acquisition Foundation

Operational Programme II - European Structural and Investment Funds 2014-2020
 "Investing in human capital to create more opportunities and promote the well-being of society"
 Project partially financed by the European Social Fund
 Co-financing rate 80% European Union, 20% National Funds







MINISTRY FOR EDUCATION AND EMPLOYMENT
 PARLIAMENTARY SECRETARIAT
 FOR EUROPEAN FUNDS AND SOCIAL DIALOGUE

WHY ATTEND?

ACCESS
 valuable information on support services available

BUILD
 internal capacity to professionally assist vulnerable individuals and disabled persons at the workplace

CAPITALIZE
 from fiscal and other incentives linked with the employment of new/current vulnerable individuals and disabled persons

Stay ahead of the Game and join the Leaders that promote the Employment of Vulnerable individuals and Disabled persons

Reserve a spot now
 Email us on set.jobplus@gov.mt or call us on 2220 1722






The VASTE Programme complementing an AMIF 11.01 Project - Employment Support Services for Migrants



Employment Support Services
for Migrants
MT/2017/AMIF/11.01



- 1 Short-Term Job Exposures through the Job Brokerage Office (JBO)
- 2 Career Guidance, Profiling, and CV drafting
- 3 Courses in basic English and Maltese Language for Employment
- 4 Access to other Professional Services, Courses and Schemes

Eligibility:
Asylum Seekers
Refugees
Holders of Subsidiary/Temporary Humanitarian Protection

Contact details:
Guidance, project information and courses
Email: amif.jobsplus@gov.mt
Job Brokerage Office
Email: brokerage.jobsplus@gov.mt
Tel: 22201415

Asylum, Migration and Integration Fund 2014 – 2020
This Project is financed by the European Union
Co-financed by 75% EU Funds 20% Maltese Funds
Sustainable Management of Migration Flows



- ▶ **Short-Term Job Exposures** through the Job Brokerage Office (JBO).
- ▶ **Career Guidance, Profiling & CV drafting.**
- ▶ **Training courses** in basic English and Maltese Language for Employment.
- ▶ **Access to other Services, Professional support, courses & work exposure schemes.**

T: +356 22201405

E: amif.jobsplus@gov.mt

Statistics: VASTE Programme as at end March'22

Activity	Interventions	Disabled Participants	Vulnerable Participants
Pre-employment training	935	402	281
Course in basic ICT skills	155	86	53
Sheltered employment training	238	205	0
LSF Job coaching Services	6,158	970	0
NGO Services	607	86	355
Mentoring Services	3,170	0	278
Total:	11,263		
Unique persons participating in one or more VASTE activities:	2,006		

Statistics: Jobsplus & Lino Spiteri Foundation Placements

Persons with Disability Placements	2016	2017	2018	2019	2020	2021
Placements	267	212	138	234	230	341
LSF vacancies created	268	225	175	140	114	171

Vulnerable Placements	2016	2017	2018	2019	2020	2021
Placements	173	233	178	182	206	287

Olivia Farrugia

Head of Division

T: +356 22201999

E: olivia.a.farrugia@gov.mt

Thank you