



State of play on programming 2021-2027 and involvement of partners

7 December 2021, the Dialogue with the CPR partners





Partnership and programming 2021-27

7 December 2021, the Dialogue with the CPR partners
Witold Willak, DG REGIO



Partnership principle in Article 8 of the CPR

Partnership and multi-level governance

For the Partnership Agreement and each programme, each Member State shall organise and implement **a comprehensive partnership** in accordance with:

- its institutional and legal framework
- taking into account the specificities of the Funds

Partnership principle

Applicable for decades, the **Code of Conduct** for the first time also since the beginning of the informal stage

Some MS have established proper partnership with the relevant partners, in some, there are **gaps**, e.g.

- involving the relevant bodies representing civil society, environmental partners, and bodies responsible for promoting social inclusion, fundamental rights, rights of persons with disabilities, gender equality and non-discrimination
- transparent consultation mechanisms with partners including a feedback mechanism

Key issues to watch in 2021-2027

Are partners well informed ?



Do partners have an impact on the final decisions ?

Are partners well consulted ?



Are partners offered capacity-building opportunities ?

State of play of 2021-2027 programming

- Delays due to necessary reaction to COVID pandemic – CRII, REACT-EU and RRF
- **6 Partnership Agreements submitted** (1 adopted for **EL**, **AT** (29/7, observations sent), **DE** (20/9, observations sent), **FI** (22/11), **LT** (19/11), **SE** (29/11))
- 39 cohesion policy submitted (10% of all expected), incl. 6 ESF-led, all adoptions in 2022
- All programmes (except for 1) will reprogramme 2021 allocation
- Informal dialogue to be used at its fullest – if the programming documents are of sufficient quality, adoption process will be smoother and faster
- Commission stands ready to continue the dialogue (formal or informal) with the MS and to provide support
- Quality is of utmost importance, Commission will continue providing observations to informal/formal programming documents

Cohesion policy has its well-established qualities but we strive for more

- European Green Deal – ERDF/CF climate targets (30% and 37%), biodiversity and JTF
- Stronger horizontal principles (fundamental rights, equality, non-discrimination, sustainability, including “Do no significant harm”)
- Stronger partnership principle
- Improved and leaner enabling conditions
- Modernised thematic concentration and more focused Policy Objectives
- Improved performance framework and mid-term review
- Policy closer to citizens – new Policy Objective 5
- New European Bauhaus
- Administrative capacity is a key
- Simplification for beneficiaries at heart of CP 2021-27

State of play of REACT-EU programming for 2021

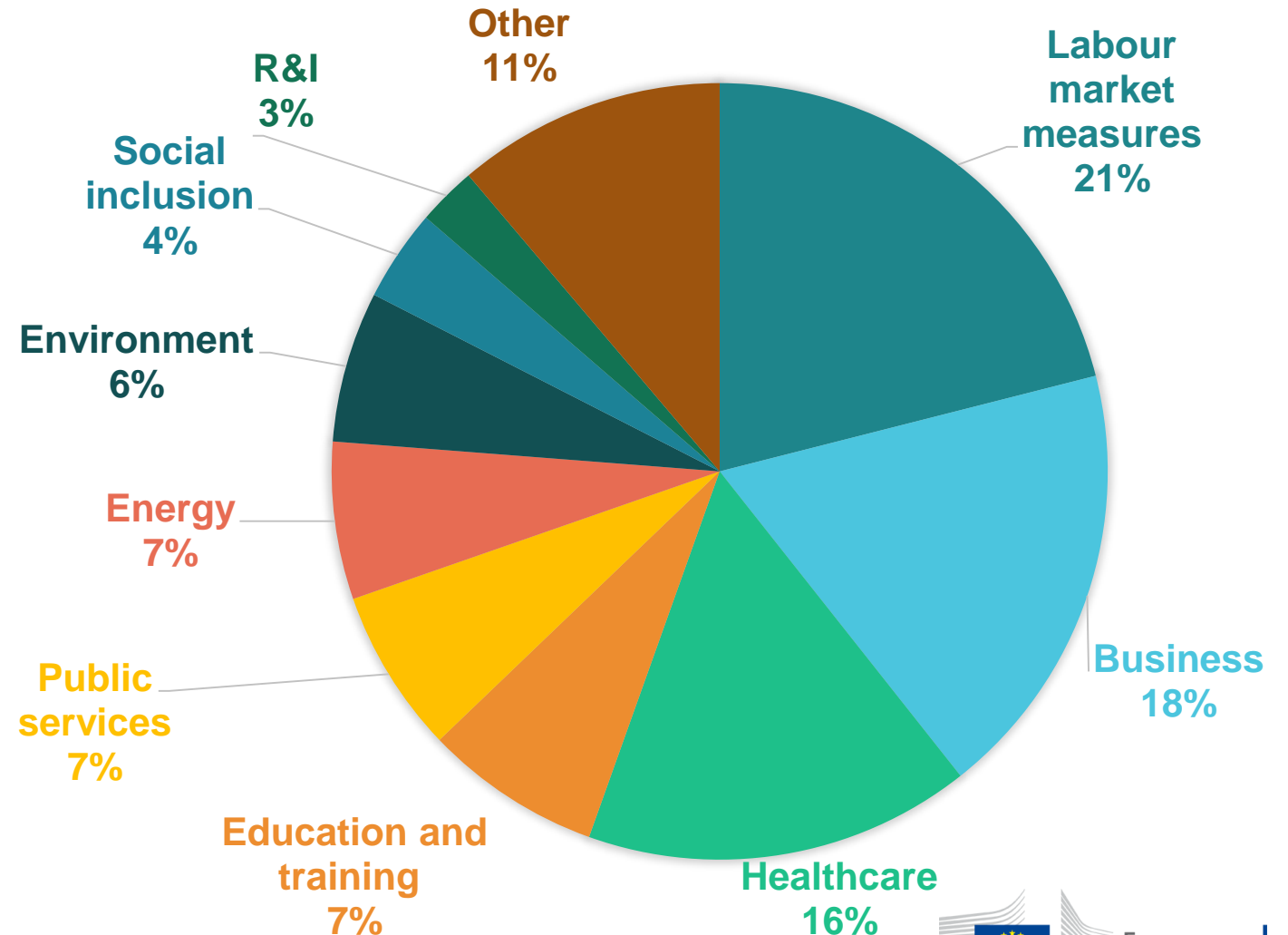
2021 Programming almost complete:

- EUR 36.6 bn total support (92% of total allocation)
 - ERDF = €23.3bn
 - ESF = €12.8bn
 - FEAD = €506m
- 20 MS have completed their amendments
- 175 adopted OPAs adopted, of which 99 REGIO

Focus on 2022 tranche:

- EUR10.8 billion available for 2022
- [Allocation split by MS](#) announced on 24 November
- New 2022 tranche is expected to top-up activities initiated in 2021

CURRENT INVESTMENTS THROUGH REACT-EU





European Social Fund Plus (ESF+)

7 December 2021, the Dialogue with the CPR partners
Ruth Paserman, Director, DG EMPL



Cohesion Policy Objective 4: A More Social and Inclusive Europe Implementing the European Pillar of Social Rights

both direct support to people and reforms

EMPLOYMENT

- (a) Access to employment of all jobseekers
- (b) Modernising labour market institutions and services
- (c) Gender-balanced labour market participation, work/life balance
- (d) adaptation of workers & enterprises, well-adapted working environment, active & healthy ageing

EDUCATION TRAINING

- (e) Improving the quality, effectiveness and labour market relevance of education and training systems
- (f) Promoting equal access to and completion of, quality and inclusive education
- (g) Lifelong learning, re- and up-skilling, anticipating change and new skills requirements

SOCIAL INCLUSION

- (h) Active inclusion
- (i) Promoting socio-economic integration of third-country nationals, including migrants
- (j) promoting socio-economic integration of marginalised communities such as the Roma
- (k) Equal and timely access to services; social protection, healthcare systems and long term care
- (l) Social integration of people at risk of poverty and social exclusion
- (m) Addressing material deprivation, including accompanying measures

Enabling conditions - Capacity building - Social innovation

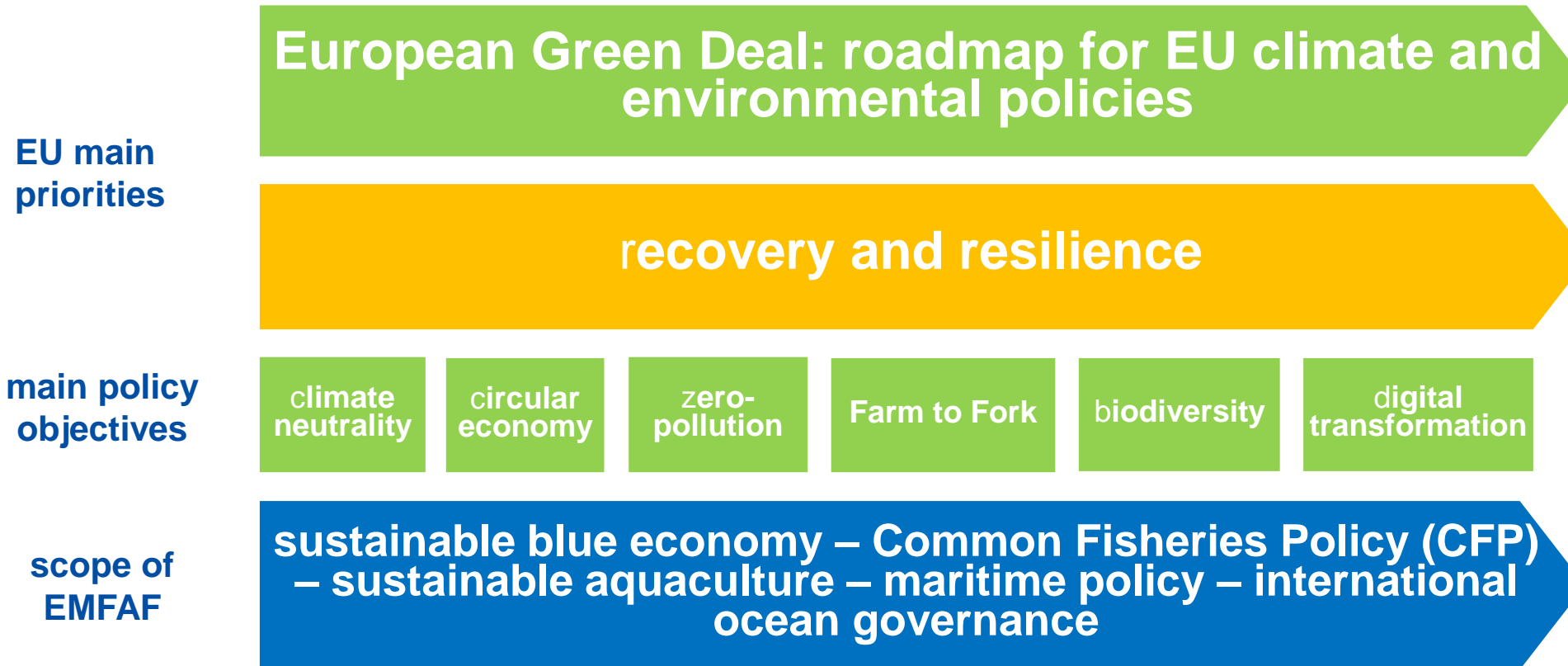


European Maritime, Fisheries and Aquaculture Fund (EMFAF)

7 December 2021, the Dialogue with the CPR partners
Dobrinka Dimova, DG MARE



EMFAF-related context



Scope of EMFAF (examples in shared management)

Sustainable blue economy & maritime policy	Common Fisheries Policy	Sustainable aquaculture
<ul style="list-style-type: none"> - maritime security - development and diversification of the sustainable blue economy in local areas through CLLD (Community-led local development) - marine knowledge 	<ul style="list-style-type: none"> - fostering sustainable fishing activities in the long term (innovation and investment in low-impact and low-carbon fishing techniques) - providing conditions a competitive fisheries sector and an efficient market for fishery products - supporting the structural management of fisheries <ul style="list-style-type: none"> - collecting scientific data to underpin fisheries management - supporting the control of fishing activities and promoting a culture of compliance to ensure a level-playing field <ul style="list-style-type: none"> - safety on board - generational renewal 	<ul style="list-style-type: none"> - environmental sustainability (including through organic aquaculture, resource efficiency and nature management services) <ul style="list-style-type: none"> - productive investments - innovation - diversification of production and activities - development of professional skills - improvement of working conditions <ul style="list-style-type: none"> - public health actions - aquaculture stock insurance schemes <ul style="list-style-type: none"> - animal health and welfare

EMFAF specific elements

Programming

- **SWOT analysis** (Strengths, Weaknesses, Opportunities and Threats) to identify the needs
- A **financing plan** showing the distribution of financial resources across the Specific Objectives

Close collaboration with other funds is essential to ensure synergies.

Nature of the fund & partners

- Sectoral fund that is **linked to specific policies**: CFP & maritime policy
- Sectoral partners

State of play

- 2 EMFAF programmes formally submitted so far (AT and EL)



Asylum, Migration and Integration Fund (AMIF), Border Management and Visa Instrument (BMVI) and Internal Security Fund (ISF)

7 December 2021, the Dialogue with the CPR partners
Ari Valila, DG HOME



HOME Funds 2021-2027– Asylum, Migration and Integration Fund (AMIF), Border Management and Visa Instrument (BMVI) and Internal Security Fund (ISF)

- Partnership Agreement in the CPR does not apply to HOME Funds, but coordination, demarcation and complementarities between the Funds, incl. HOME Funds need to be included in the PA (CPR art. 11 (b) (ii) and (iii));
- Partnership and multi-level governance (CPR art. 8) applicable to HOME Funds. The AMIF (EU) 2021/1147 has also a specific article (4) on the partnership-principle;
- All programmes in all three HOME Funds include a specific section describing how the requirements of the partnership-principle have been met;
- DG HOME must assess the section concerned as part of the programme assessment ensuring a genuine and comprehensive partnership with relevant partners;
- In the AMIF an exceptionally high co-financing (90% vs 75%) could be paid for integration measures implemented by local and regional authorities and civil society organisations.

State of play of 2021-2027 programming

- Deadline for submitting draft programmes for the formal programming process (following an informal phase): 15 October 2021;
- Draft programmes cover approximately 2/3 of the total financial envelope of the HOME Funds (approx. 18 billion in total without agencies). The remaining part will be allocated at the Mid-Term Review and through bi-annual Commission Work Programmes of the Thematic Facility (years 2021-2022 recently adopted);
- Admissibility checks as of 1 December 2021 (all three Funds);
 - Admissible 19 programmes
 - Non Admissible 29 programmes (back to MS)
 - Pending 1 programme and not submitted 44 programmes
- Admissible programmes are assessed with support of REGIO, EMPL and MARE with regard to the CPR provisions, e.g. Horizontal Enabling Conditions and Partnership arrangements:
- We expect that the first HOME programmes are approved in spring 2022.



Thank you

