



THE EU AS A MAJOR INVESTOR

EXAMPLES OF LARGE PROJECTS IN EU MEMBER STATES

The European Union is a major investor in large projects in transport, energy or ICT infrastructure, as well as in other areas such as environment, culture or education. Such projects receive funding from the European Regional Development Fund (ERDF), the Cohesion Fund (CF) or the European Social Fund (ESF).

COUNTRY	PROJECT	EU CONTRIBUTION	THEMATIC
 United Kingdom	Cornwall Next Generation Broadband	EUR 65 million ERDF	
	ASTUTE	EUR 18 million ERDF	
 Poland	LNG Terminal	EUR 202 million ERDF	
	S17 Express Road	EUR 273 million ERDF	
 Hungary	Budapest Metro Line 3	EUR 473,4 million CF	
	Extreme Light Infrastructure Attosecond Light Pulse Source	EUR 113 million ERDF	
 Italy	Pompeii	EUR 78 million ERDF	
	'School Mechanism' project	EUR 420 million ESF	
 France	East European High-Speed Line	EUR 1 billion ERDF	
	Mont-Saint Michel	EUR 10 million ERDF	

#CohesionPolicy
 #EUinmyRegion
 #ESIFunds

@EUinmyRegion

http://ec.europa.eu/regional_policy/en

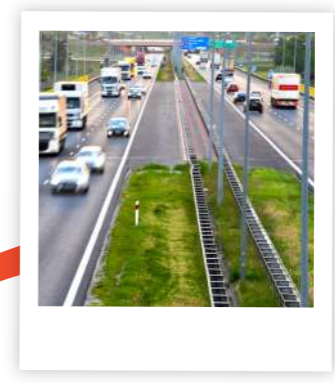
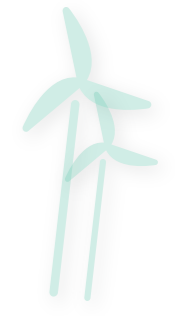


THE EU AS A MAJOR INVESTOR

The **ASTUTE** project – an alliance between Welsh universities – was set up to stimulate economic growth and competitiveness and increase environmental sustainability through the development, demonstration and uptake by local firms of advanced manufacturing technologies. Over 300 businesses were involved in more than 150 joint industry-academia projects, allowing them to consolidate and expand their operations and generate widespread socio-economic benefits.



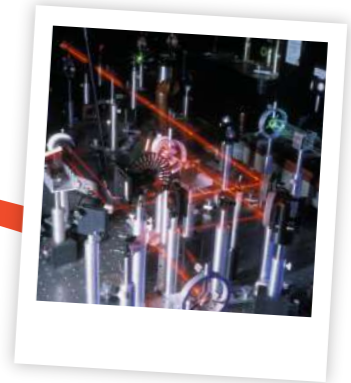
An EU-funded **LNG terminal** for unloading and storage of liquefied natural gas, and its subsequent conversion to natural gas and delivery to the national supply network, has been built at Świnoujście, on Poland's Baltic coast. By contributing to diversification of gas supply, the terminal increases energy security in Poland and neighbouring countries irrespective of technical, climatic or political factors, and helps to satisfy a growing demand for gas.



A new section of Poland's **S17 express road** between the town of Garwolin and the village of Kurów, and running through the Mazowieckie and Lubelskie regions, is being built with EU funding. A section of the S12 express road connecting the S17 with the city of Puławy and an important river bridge over the Vistula is also under construction as part of the project.

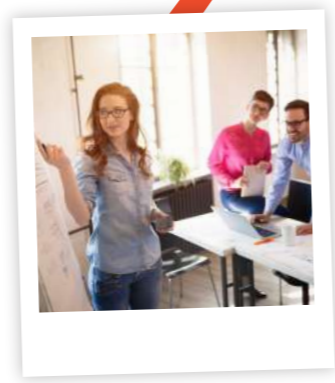


EUR 473,4 million from the Cohesion Fund were invested in the reconstruction of the entire **Budapest Metro Line 3**, the 'blue line', in the Hungarian capital of Budapest. This will provide better services to the more than half million users who use it daily.



The **Extreme Light Infrastructure Attosecond Light Pulse Source** (ELI-ALPS) laser research centre in Szeged is the largest research and development project in Hungary to date. Co-funded by the EU, the centre can produce the highest number of and, at the same time, the shortest laser pulses in the world. This allows atomic processes within molecules to be observed. The project is part of a pan-European, internationally renowned research infrastructure with facilities in the Czech Republic (ELI Beamlines), Hungary (ELI-ALPS) and Romania (ELI-NP). It has contributed to reversing the brain drain: keeping local researchers and attracting foreign experts to the 3 countries.

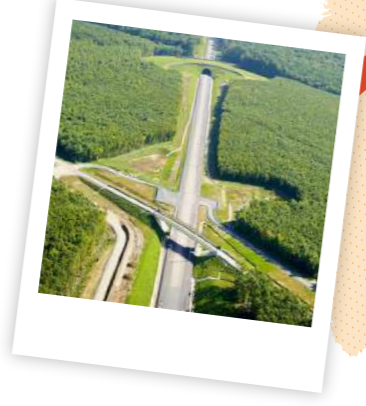
Pompeii is one of the world's most important archaeological sites. Under Grande Progetto Pompei, EUR 105 million has been invested in its preservation and restoration, of which EUR 78 million is from EU funds – ERDF. This should boost the economy by promoting tourism and related local industries. Phase 1 was completed in December 2015 and the rest of the work is expected to be finished by the end of 2018.



Thanks to the **'School Mechanism' project**, by the end of 2013, more than 400 000 students had an opportunity to participate in school work experiences (such as traineeships), periods of study abroad (in particular to improve language skills) or integrated plans for key skills development. More than 200 initiatives to prevent early school leaving were co-funded, involving 52 000 students.



Used by 12 000 passengers a day and serving new stations, the **East European High-Speed Line** facilitates movement of people and goods. In 10 years, journey times between Paris and Strasbourg have gone from 4 hours to 1 hour 45 minutes. This brings places such as Reims, Nancy, Frankfurt and Basel closer together and enables many towns and cities to attract more residents, businesses and investment.



Plans to refocus on **Mont-Saint Michel's** maritime aspect were implemented, with new emphasis placed upon the area's architectural heritage and natural environment. Increased biodiversity, a focus on high-quality tourism and sustainable economic development are the priorities of this enormous project.



The aim of the **Cornwall Next Generation Broadband** project is to transform Cornwall and the Isles of Scilly (CloS) economically and socially into a more knowledge based, high value added and lower carbon economy. The project has attracted high-value businesses (including start-ups), and inward investors, providing them with fibre connectivity with up to 100Mb/s capability. About 10 000 of Cornwall's 25 000 businesses were connected by end 2015, with up to 2,400 high-value businesses..

