

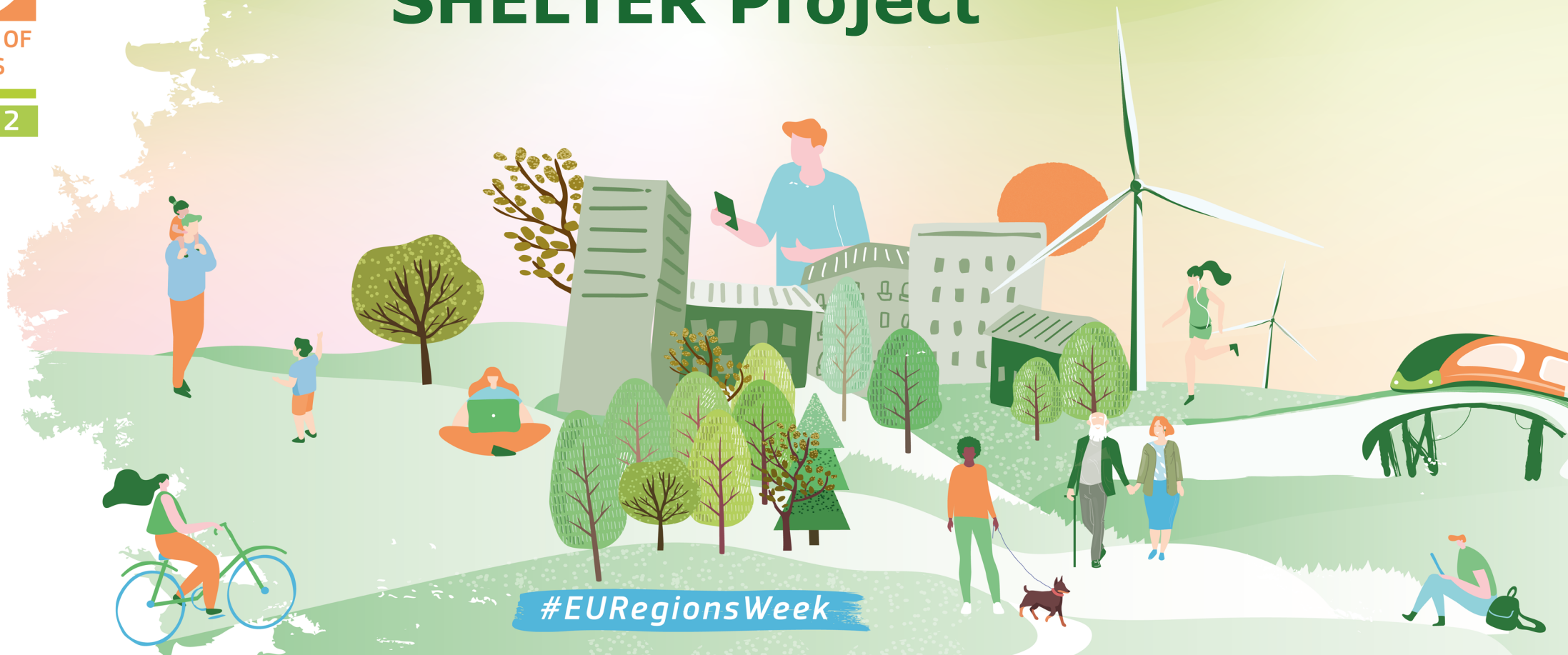


EUROPEAN WEEK OF  
REGIONS & CITIES

2003 - 2022

New Challenges for  
Europe's Cohesion

# SHELTER Project



#EURegionsWeek

Shelter





EUROPEAN WEEK OF  
REGIONS & CITIES

2003 - 2022

# What's SHELTER Project?

New Challenges for  
Europe's Cohesion

## Data driven and community-based resilience enhancement

as result of the interplay of two processes collaborating →  
individual solutions for each HA:

- **Data driven approach** → supports diagnosis, decision making, implementation and monitoring based on existing knowledge and heterogenous data
- **Open Labs approach** → continuous framework for local knowledge extraction, citizen's engagement, co-creation, capacity building and innovation





EUROPEAN WEEK OF  
REGIONS & CITIES

2003 - 2022

## SHELTER 5 Open Labs

- Ravenna
- Seferihisar
- Dordrecht
- Baixa-Lima
- Sava river basin



New Challenges for  
Europe's Cohesion

## Typologies of HA Resilience

- 3 scales
- 6 hazards
- Intangible, Cultural and Natural Heritage







EUROPEAN WEEK OF  
REGIONS & CITIES

2003 - 2022

## SHELTER Open Labs

New Challenges for  
Europe's Cohesion

OPEN LAB	CODE	CO- CREATION STRATEGY TYPE	CASE STUDY	TOOLS	HAZARD	METHODS
URBAN	U-TEC	Technological co-adaptation strategy	Ravenna	Stabilization and consolidation techniques	Earthquakes	Co-creation of specifications for the solution through the involvement of citizens and master students. International open call for suppliers
				Pumps	Subsidence	
	U-ICT	ICT solution co-creation strategy	Dordrecht	Tailored IMMERSITE solution	Floods/Storms	Co-creation and co-development of tailored citizen engagement tool (SHELTER)
URBAN	U-VER	Vernacular co-adaptation	Seferihizar	Innovation in vernacular architecture	Earthquakes	Co-creation of solutions based on traditional skills through the involvement of local research, academia and local business.
				Vernacular eco-rehabilitation	Heatwaves	
CROSS-REGIONAL	CR-NBS	NBS co-creation strategy	Baisa-lima	Co-creation of NBS	Wildfires	Co-creation of NBS through the involvement of local research, academia and local business.
	CR-GOV	Multilevel governance	Sava river	Co-creation of multilevel governance schemes for transnational HA.	Floods	Co-creation of collaborative governance schemes.

→ committed to co-create their own path towards resilience

#EURegionsWeek



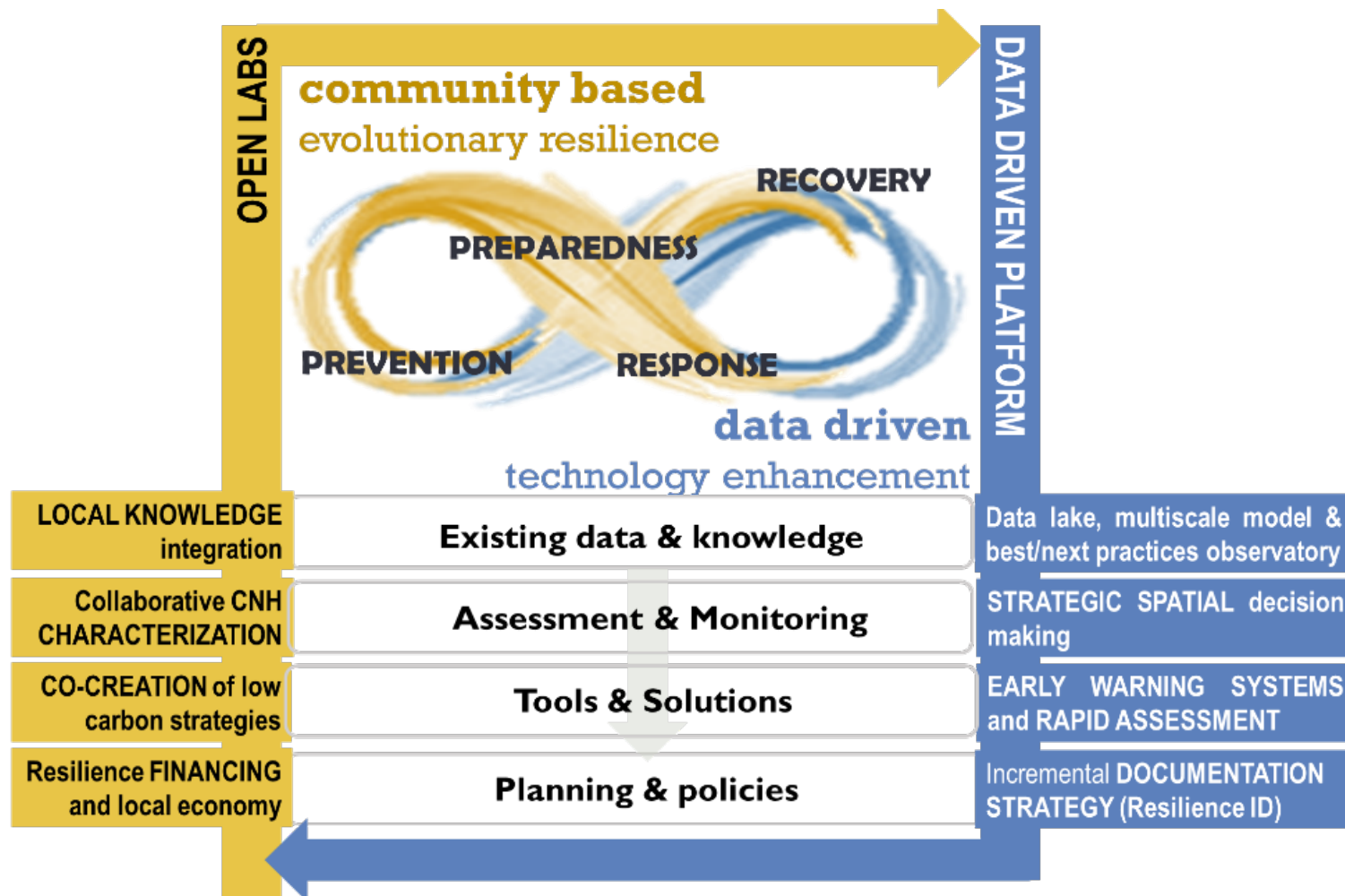


EUROPEAN WEEK OF  
REGIONS & CITIES

2003 - 2022

# SHELTER operational knowledge framework

New Challenges for  
Europe's Cohesion



#EURegionsWeek



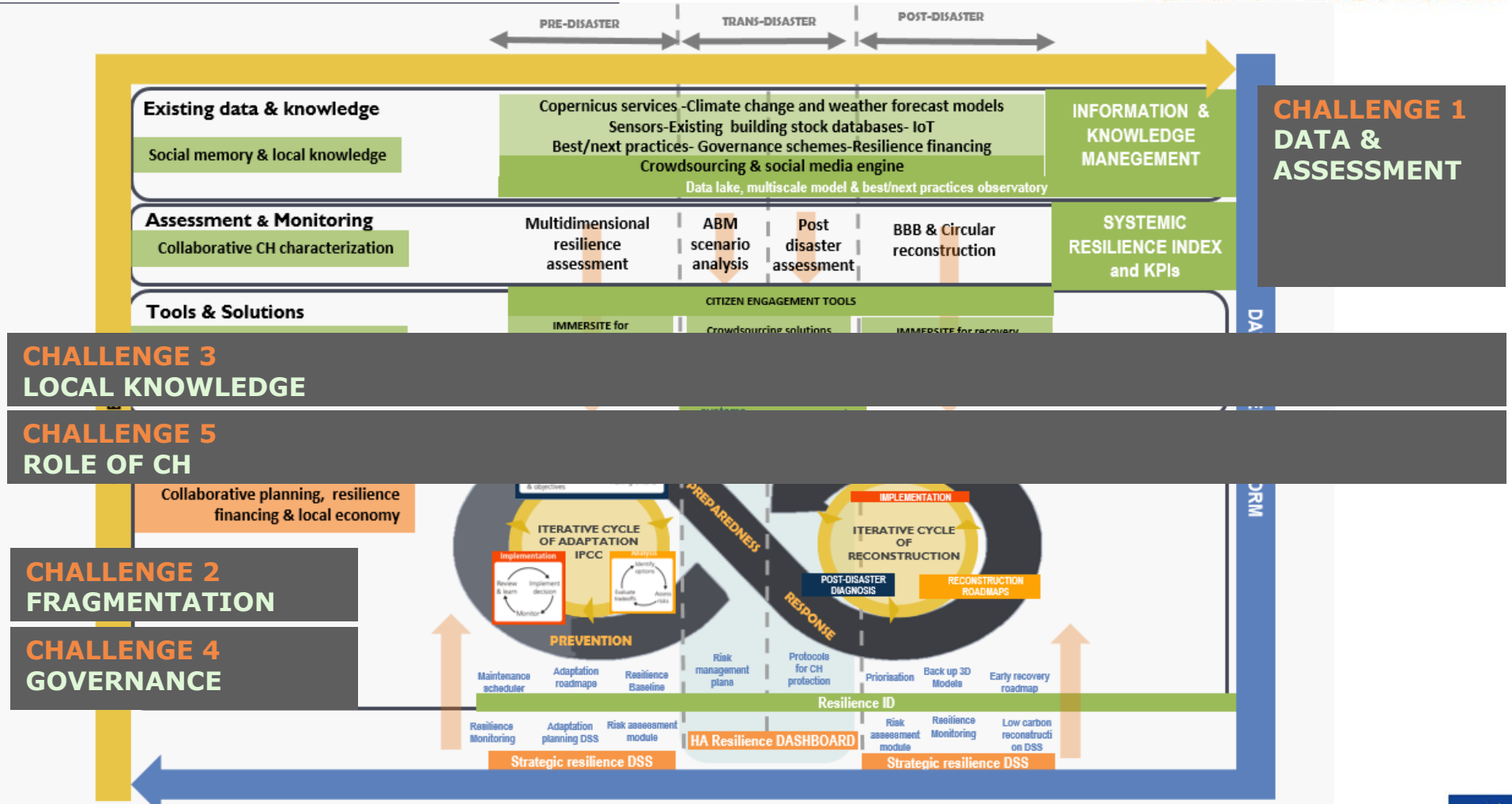


EUROPEAN WEEK OF  
REGIONS & CITIES

2023 - 2024

# SHELTER operational knowledge framework

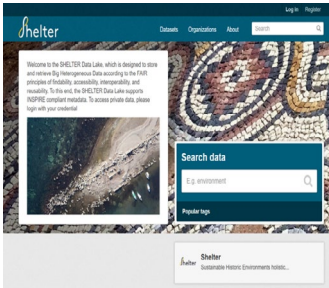
New Challenges for Europe's Cohesion





EUROPEAN WEEK OF REGIONS & CITIES

2003 - 2022

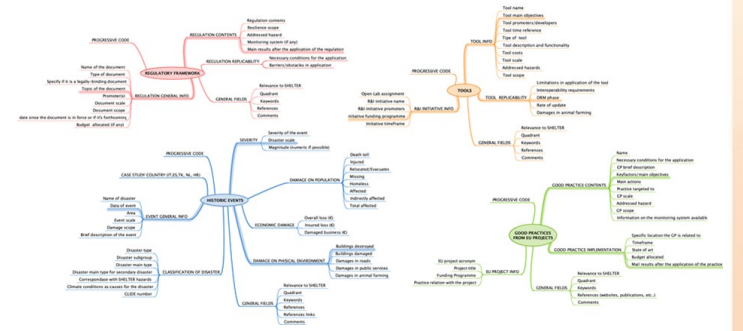
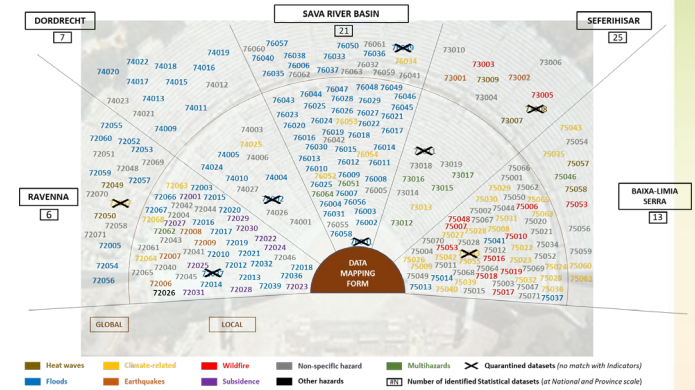


# Existing data & knowledge

## Challenge: operationalize data and information

- ✓ **Data mapping form** → 251 datasets
- ✓ **SHELTER Ontology** → + 65 definitions in Shelter Wiki page  
→ matched with ARCH glossary
- ✓ **Best/Next Practice Observatory**  
→ 150 references codified + protocol for historic events + 94 Good practices + 100 Tools
- ✓ **Data Lake** → 72 data sets
- ✓ **Multiscale Multisource Data Model** → 5 models of our OLs

## New Challenges for Europe's Cohesion







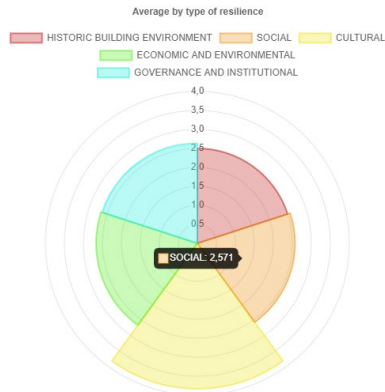
EUROPEAN WEEK OF  
REGIONS & CITIES

2003 - 2022

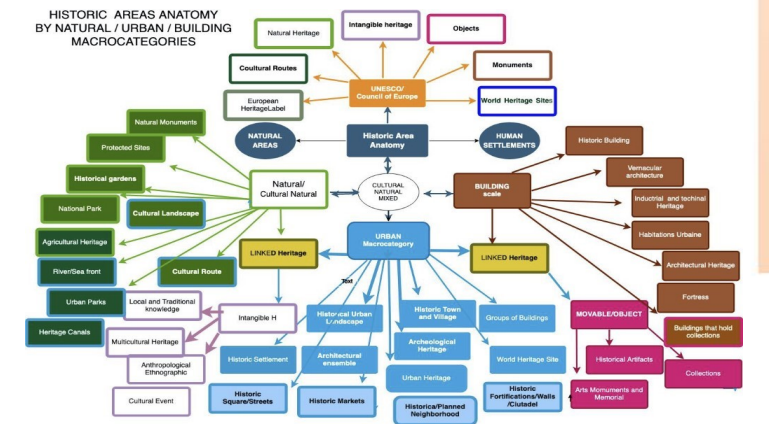
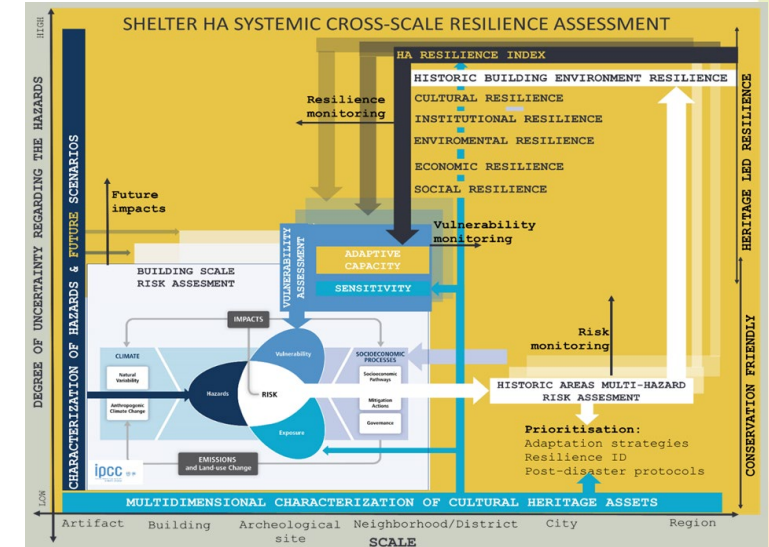
# Assessment & Monitoring

## Challenge: measure resilience

- ✓ **Conceptual basis:** Definition of Resilience + HA Resilience structure
- ✓ **HA resilience assessment and monitoring framework** → 262 indicators
- ✓ **Anatomy of HA:** methodology to collaboratively characterise CH assets for a heritage-led resilience
- ✓ **Local knowledge** → Consultation with OLs through local working sessions addressing socio-economic and non-climate stressors
- ✓ **A replicable spatially explicit risk assessment methodology** → to be implemented in the DDP
- ✓ **Resilience index** → self diagnosis tool



## New Challenges for Europe's Cohesion







EUROPEAN WEEK OF  
REGIONS & CITIES

2003 - 2022

## Tools & Solutions

### Challenge: To develop tools for all the phases of DRM

	Prevention	Preparedness	Response	Recovery
Portfolio of solutions	✓	✓	✓	✓
Early warning systems		✓		
Rapid damage assessment			✓	
Intelligent conversational tool		✓	✓	
Social media data engine		✓	✓	
SHELTER INMMERSITE	✓			✓

New Challenges for  
Europe's Cohesion



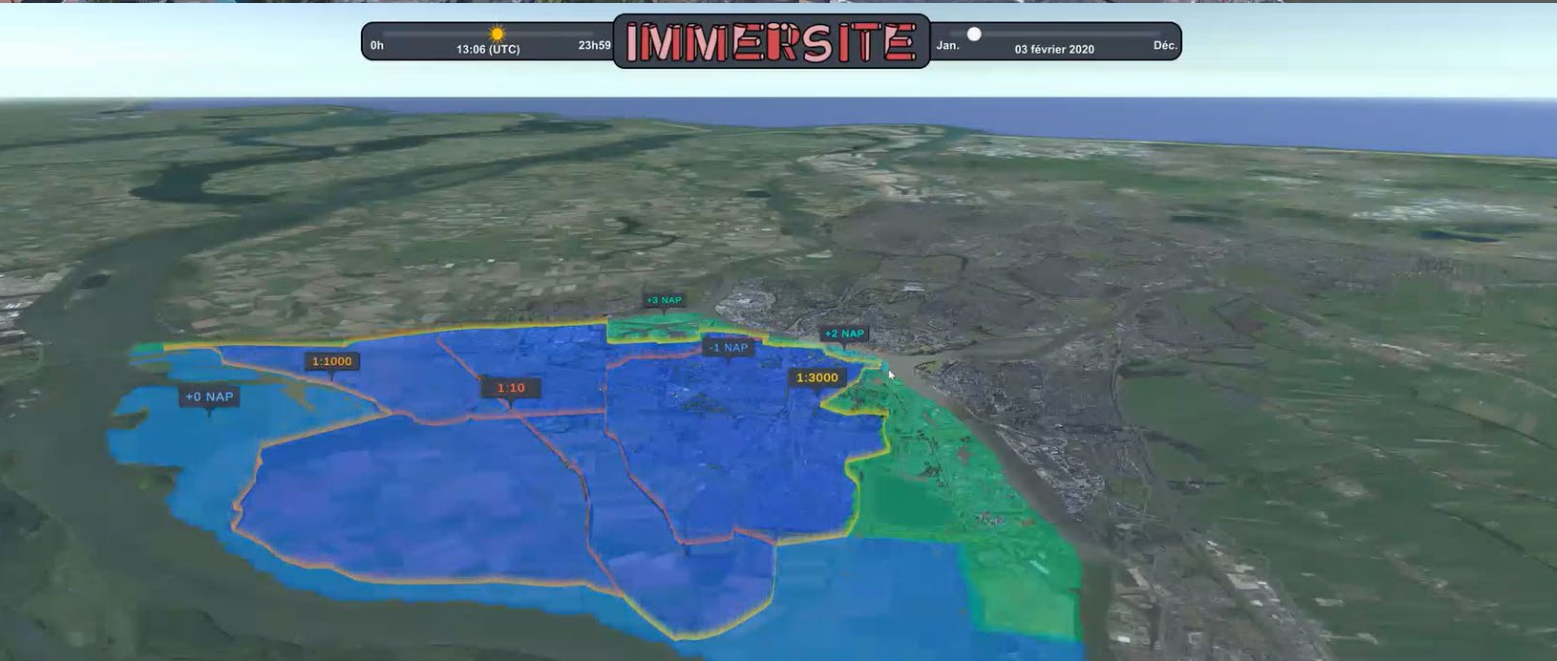




Dykes level



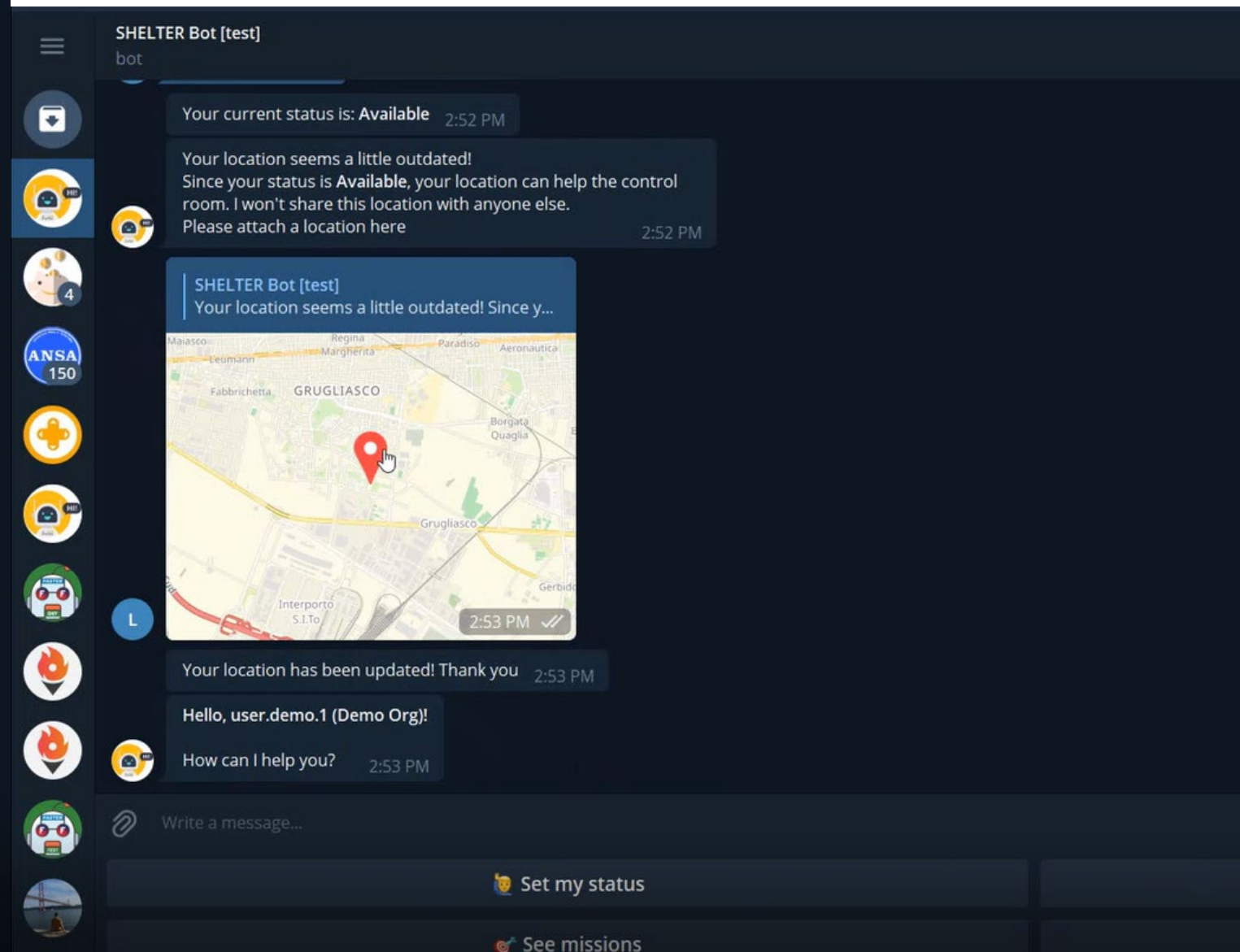








## SHELTER CHATBOT





**Shelter** dashboard

Starting date: 01/04/2022 - 14:56 | End date: 02/03/2022 - 14:56

Reports by hazard:
 

- Wildfire
- Subsidence
- Flood
- Landslide

Missions by status:
 

- Completed

Persons by status:
 

- Moving
- Active

Persons table:
 

Username	Tax code	Organization

**Shelter** map

Longitude : 18.62 | Latitude : 44.80 | Zoom : 9.65

SEARCH HERE

After beginning of a flood event from yesterday, today a landslide has occurred. Many CH assets are destroyed.

**Shelter** map

Longitude : 15.98 | Latitude : 45.81 | Zoom : 16.53

SEARCH HERE

CATEGORY: Person  
 AUTHOR: sava.om.1  
 ORGANIZATION: Sava Open Lab

**Shelter** map

Longitude : 10.06 | Latitude : 44.91 | Zoom : 6.81

SEARCH HERE

- + Create Communication
- + Create Mission
- + Create Map request
- X Close Menu

**Shelter** filters

Starting date: Feb 3 14:57 | Ending date: [dropdown]

February 2022

Su	Mo	Tu	We	Th	Fr	Sa
	1	2	3	4	5	
6	7	8	9	10	11	12
13	14	15	16	17	18	19
20	21	22	23	24	25	26
27	28					

RESET | APPLY



EVENTS STATISTICS

Longitude : 6.73 Latitude : 45.30 Zoom : 2.68 SEARCH HERE

Flood in Amsterdam  
Start : 01/31/2022, 12:40

Storm in England  
Start : 01/31/2022, 18:20  
End : 02/02/2022, 17:40



Social Media - Events

hospitalized 0 false cultural heritage 0 false  
retweet 0 false

Event statistics (0 panels)

Information types during events Distribution of information types Hazard types during events Distribution of hazard types

Other world information - infrastructure and cities

Tweets from selected events

Information type

Other useful information

2022-02-02 15:11:45  
2022-02-02 15:11:43

# SHELTER SOCIAL MEDIA ENGINE

Social Media - Stream

information type All hazard type All languages All informativeness true Time bucket 1m

Statistics



Informative tweets

informative	52430	not informative	0
-------------	-------	-----------------	---

Languages

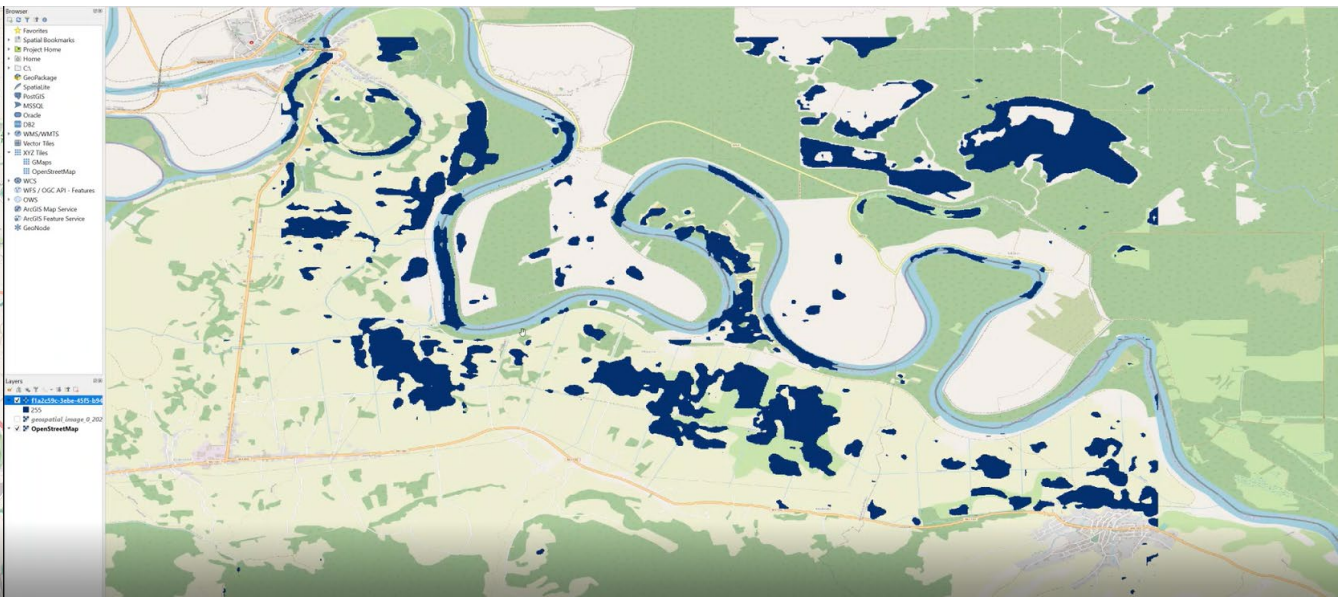
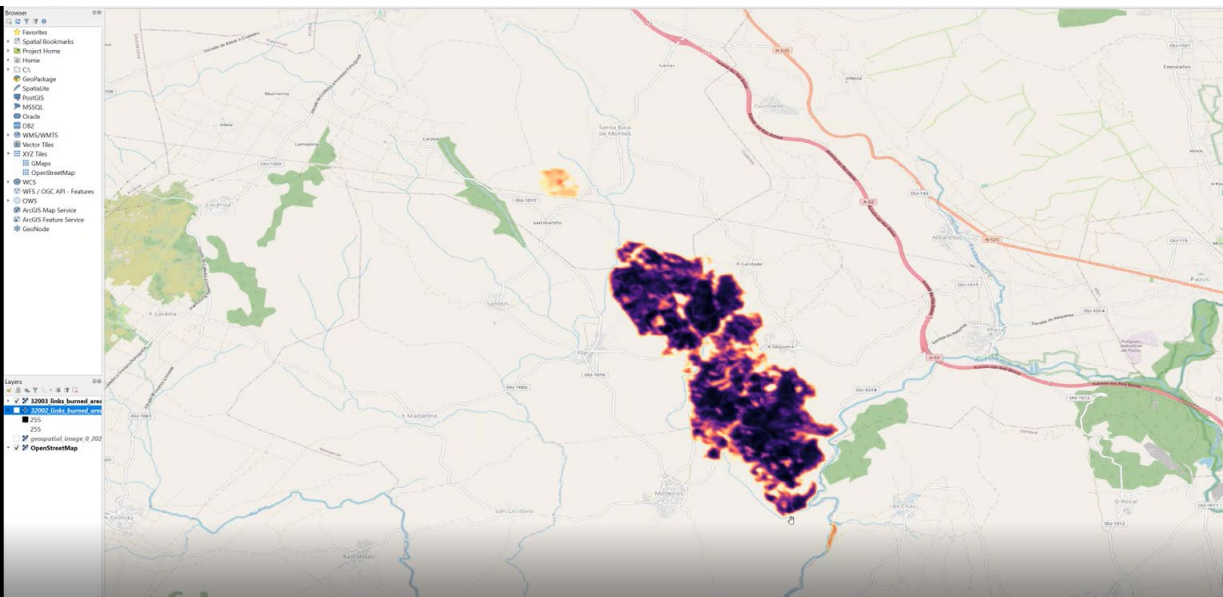
en	43415	es	3769	hr	41	it	1794	nl	173	tr	3238
----	-------	----	------	----	----	----	------	----	-----	----	------

Latest 100 tweets

time	text	hazard types	informativeness
2022-02-03 15:11:52	Okorochia Storms Aso Rock, Cries To Buhari Over EFCC Saga <a href="https://t.co/bFE2ZWcllu">https://t.co/bFE2ZWcllu</a>	Storm	Other use
2022-02-03 15:11:51	7000+ Pakistani students (Studying in china) are stucked in Pakistan since COVID-19 get started. PM @ImranKhanPTI please discuss our issue with Chinese authoritie...	Pandemic	Other use
2022-02-03 15:11:51	@FRANCES75115244 The 6 double vaxxed have become unvaxxed due to loss of vaccine immunity. Time from vaccination must be factored in for all the future cases ...	Pandemic	Other use
2022-02-03 15:11:49	While the US deals with winter weather, its summer in the southern hemisphere. Tropical cyclone #Batsirai is forecast to make landfall Saturday on Madagascar, which ...	Storm	Caution a
2022-02-03 15:11:49	@UnaVoceHamilton @GlobalBC The cold or flu doesn't cause long term, debilitating illness. Long Covid exists. Do you want to be one of them? Cleaning the air ALLOW...	Pandemic	Other use
2022-02-03 15:11:46	Democrats please point out this is because of the gop policy and rub it in the voters faces.	Storm	Other use
2022-02-03 15:11:44	#CancunCruz did nothing! #VoteBlueln2022 @BetoORourke More than 50,000 without power in Texas as major winter storm moves east More than 50,000 without po...	Storm	Other use
2022-02-03 15:11:43	That's too bad. An educated guess would tell me that you don't wear a mask in public and you don't social distance. Since you're so much better than the rest of us, do ...	Pandemic	Other use
2022-02-03 15:11:43	@kentlee47 So now show me proof that the unvaccinated are responsible for the deaths.. Did all unvaccinated people kill granny?? Did all vaccinated people kill granny...	Pandemic	Affected
2022-02-03 15:11:42	This whole protest has been nothing but a grift of a few ppl. The media has played a big part in making it a story that never existed. The organizers are crooks.	Pandemic	Other use
2022-02-03 15:11:41	Thunderstorm Information NCR_PRSD Issued at: 10:00 PM,03 February 2022 Thunderstorm is LESS LIKELY to develop over NationalCapitalRegion within 12 hours.How...	Storm	Caution a
2022-02-03 15:11:41	ANOTHER WINTER STORM is forecast to produce heavy snow from the southern Rockies to northern New England, while heavy ice is likely from Texas to Pennsylvania...	Storm	Caution a
2022-02-03 15:11:41	@provaxtexan @ogilville1 @sammy44231 @MatthewNewell67 @Abraham47955674 @VikiLovesFACS @Jayne_kniphofia @Alimasubway @IdunsDaughter @andylumm...	Pandemic	Affected







**MAIN INTERACTION FLOW:**

**TRIGGER:** a professional user request a mapping through the SHELTER dashboard

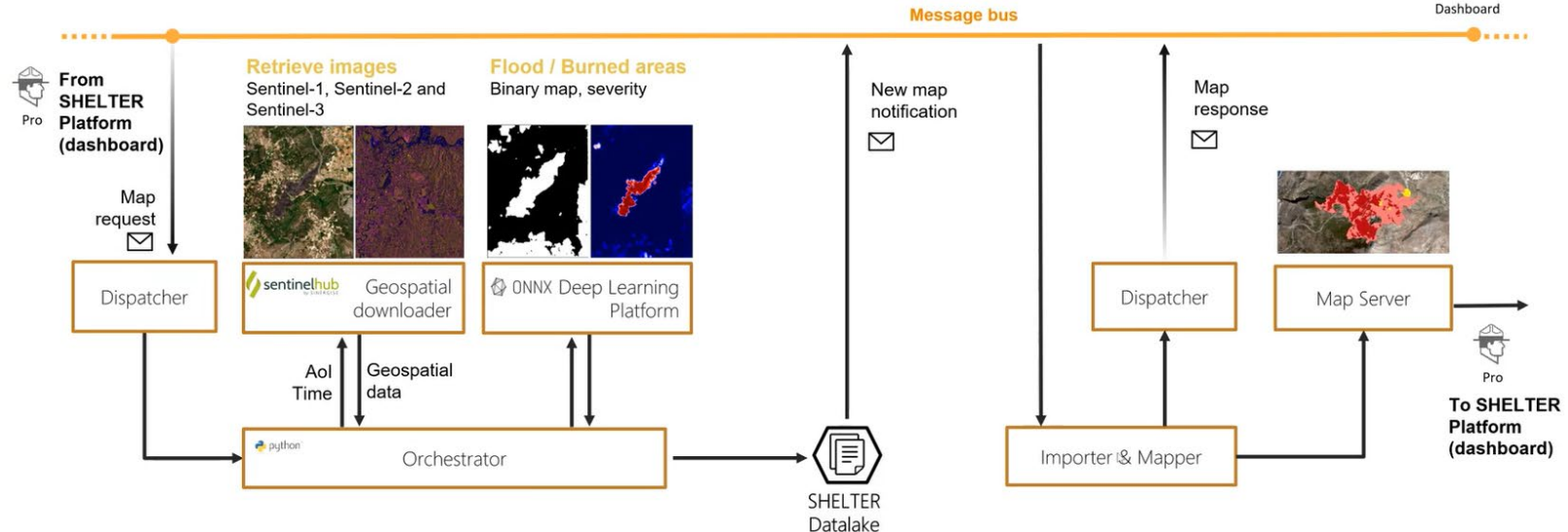


TOUCHPOINT



Dashboard

**BURNT AND FLOODED AREA DELINEATION BY SATELLITE DATA**





EUROPEAN WEEK OF  
REGIONS & CITIES

2003 - 2022

# Community-based resilience

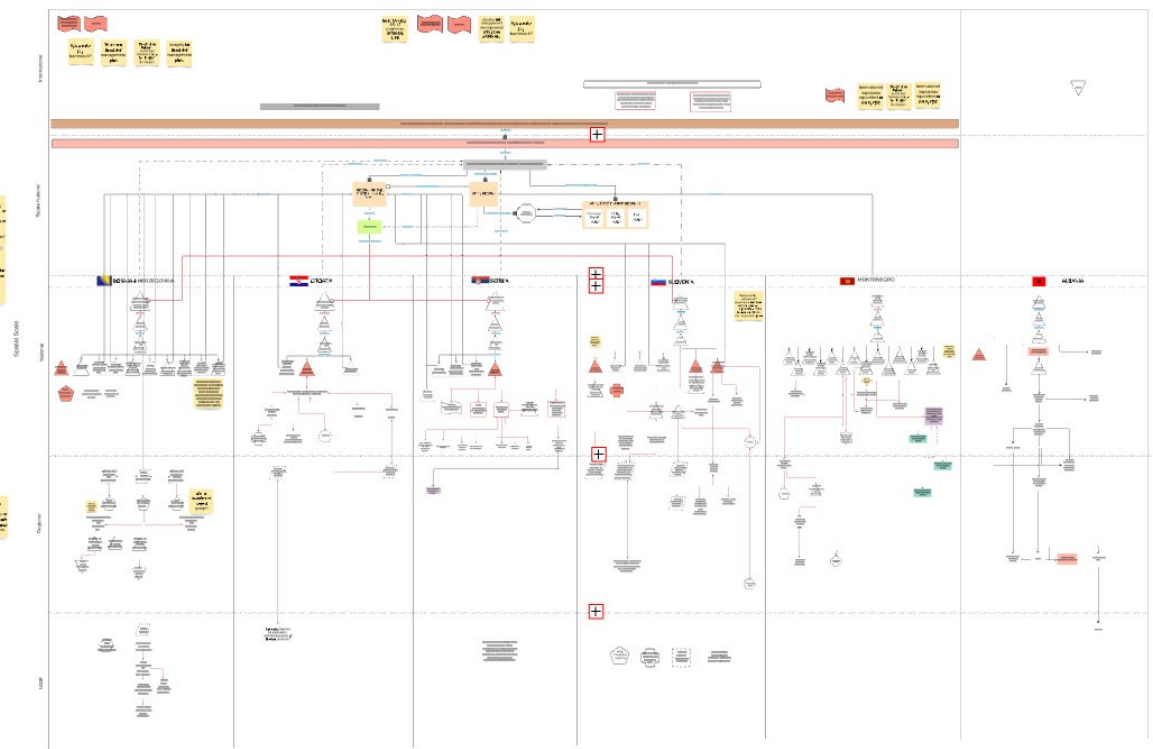
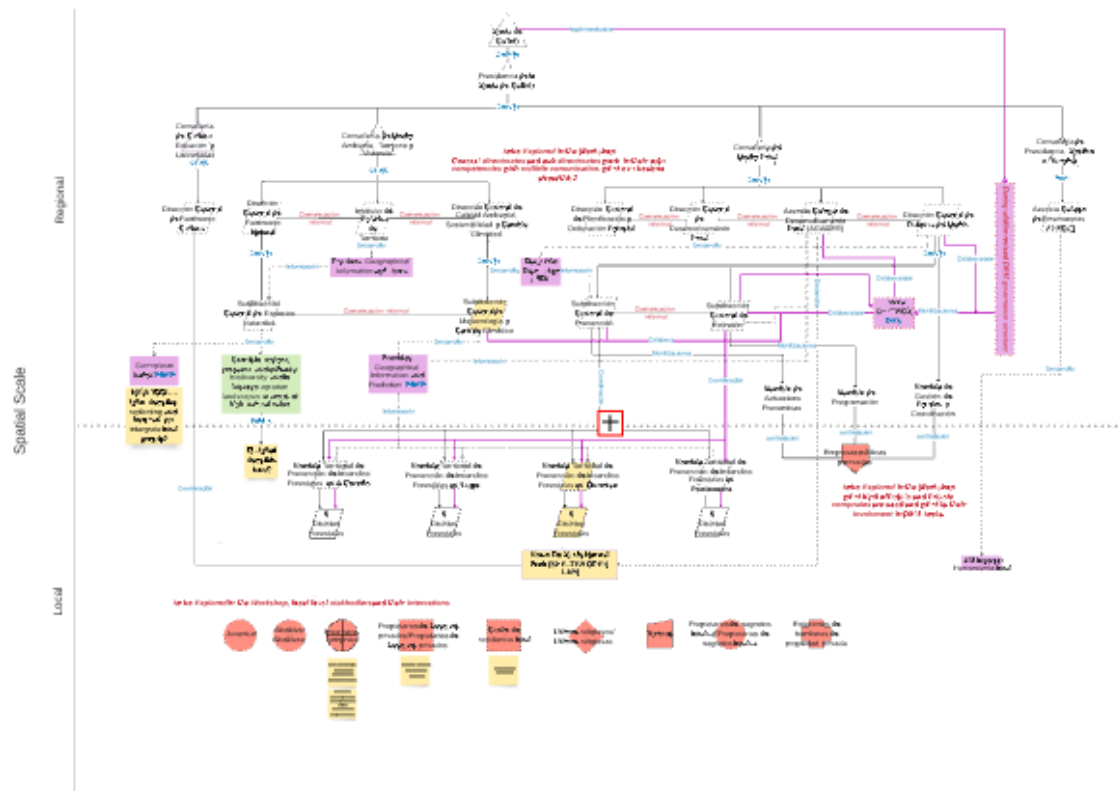
New Challenges for  
Europe's Cohesion

**Challenge: develop the tools and the methodology to support community-based approaches**

- ✓ **Organigraphs** → organigraphs as reflection tool and catalyst
- ✓ **Resilience Financing Toolkit:** Co-created five interrelated tools designed to define resilience financing landscape geography:
  1. Stakeholder mapping matrix
  2. Methodology for assessing CH losses
  3. Narrative to understand insurance landscape
  4. Resilience investment plan
  5. Business model canvas

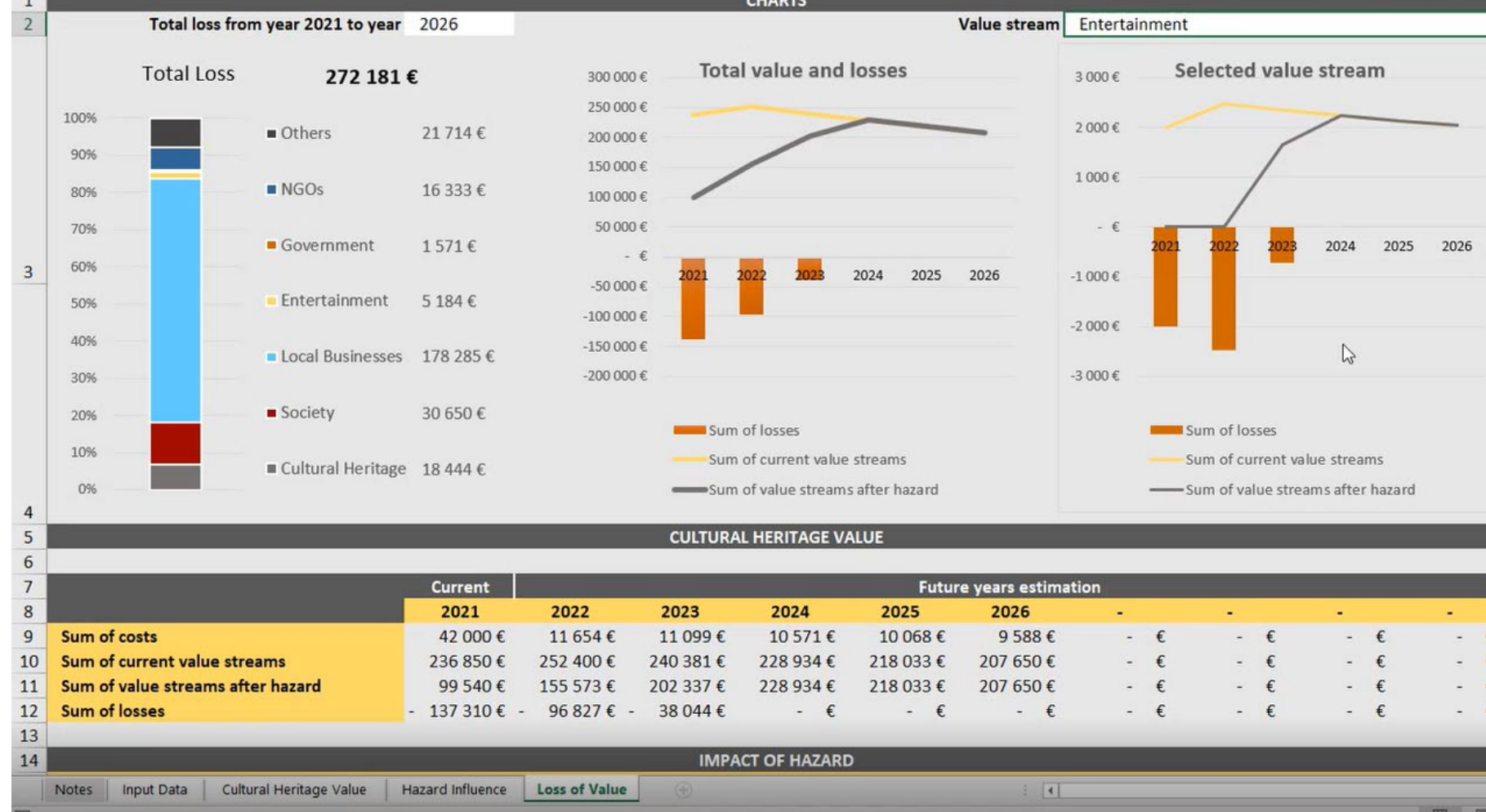


# SHELTER ADAPTIVE GOVERNANCE MAPPING SCHEMES

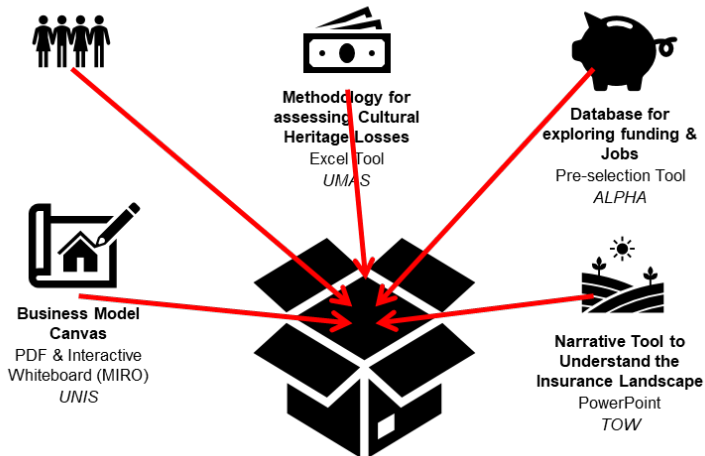




# SHELTER CH ECONOMIC VALUE AND LOSS ASSESSMENT TOOL



## T6.6 – The Resilience Financing Toolkit





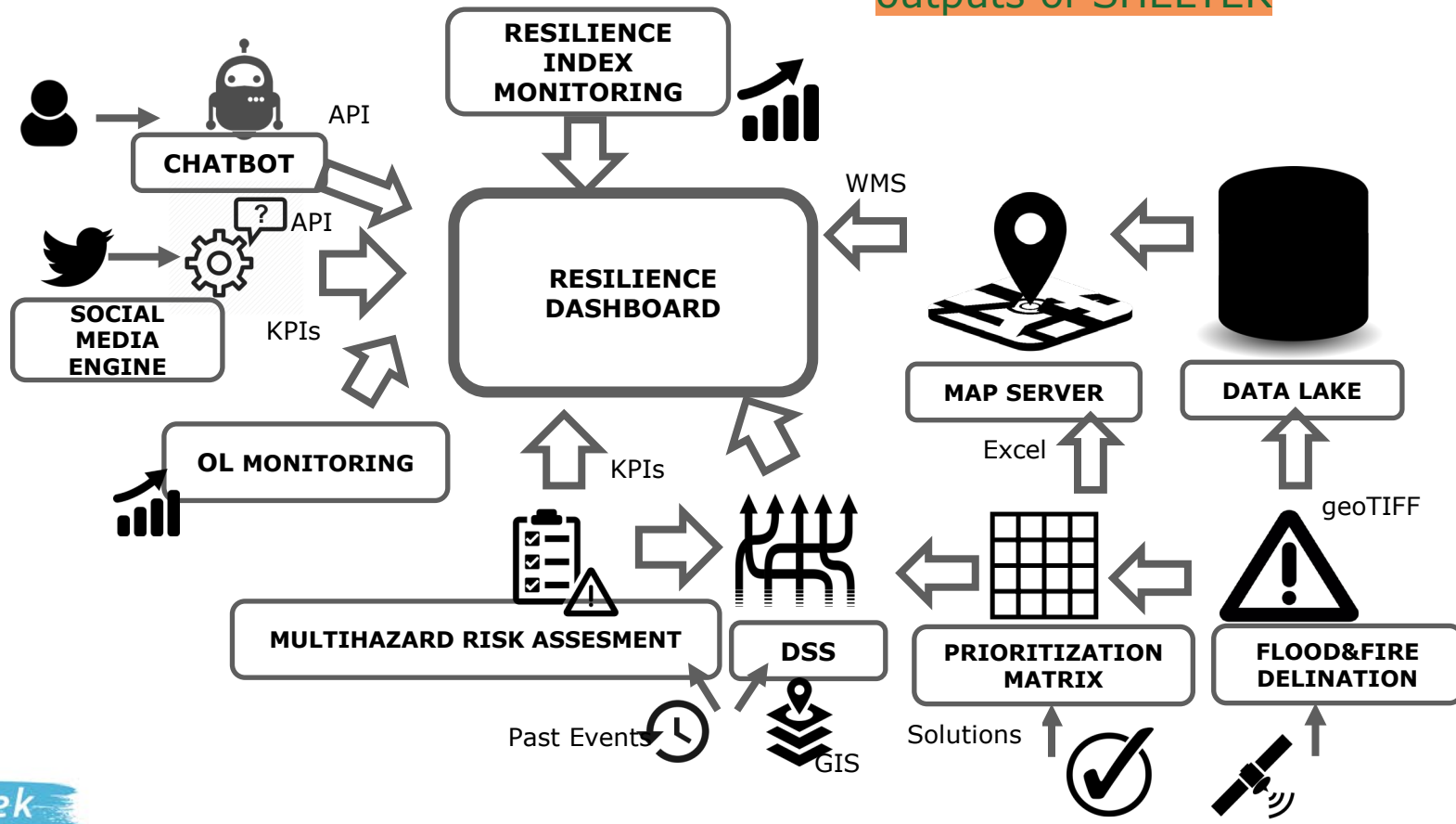
EUROPEAN WEEK OF  
REGIONS & CITIES

2003 - 2022

# Data driven platform

**New Challenges for  
Europe's Cohesion**

**Challenge:** develop a DDP able to provide data services and a visualization dashboard for decision support that integrates relevant outputs of SHELTER







EUROPEAN WEEK OF  
REGIONS & CITIES

2003 - 2022

# Data driven platform

New Challenges for  
Europe's Cohesion

All **components** (AA Server, Message Bus, Data Lake, Importer & mapper) **are operational**

**IoT module:** All components are up and running

**Web-based Resilience dashboard** → first release available

**Risk assessment module and DSS in progress** (prototype available)

The collage includes a system architecture diagram with the following components and connections:

- Heterogeneous IoT devices and systems:** Includes IoT devices, Databases, and Raw data.
- IoT Device and Systems connectors:** Includes Device Connector, System Connector, and System Connectors.
- TimecubeDB:** A central data lake receiving data from connectors.
- Post-processing algorithms:** Includes Neural Networks and Swagger APIs.
- Data Flow:** IoT devices and systems connect to connectors, which feed into TimecubeDB. TimecubeDB then feeds into post-processing algorithms.

The 'Baseline' dashboard displays a table with the following data:

Attribute	Value
ALTEZZA	12
ANNO antecedent e 1892	
ANNO_COSTR	1890
ID_AT	1
ID_CAT_DES	0
ID_CENTRO	46
ID_CLASSE	0
ID_COMPLEX	6533
ID_EDIFICI	6533
ID_FRAZION	1
ID_SEZIONE	79
ID_TIPO_CO	2
ID_TIPO_DE	7
ID_TIPO_1	3
NOME_AT	CENTRO URBANO
NOME_FRAZI	FRAZIONE PIAZZA

#EURegionsWeek



COMMUNITY

**Open Labs**