

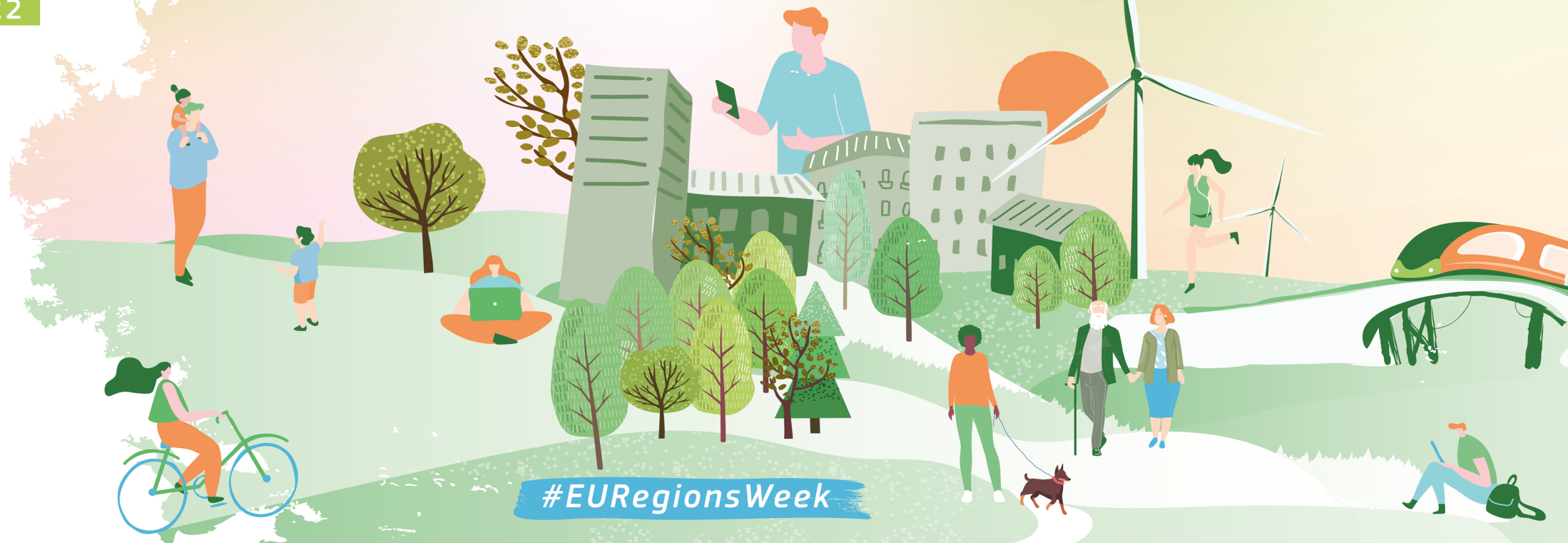


EUROPEAN WEEK OF
REGIONS & CITIES

2003 - 2022

New Challenges for
Europe's Cohesion

Advancing Resilience of historic areas against Climate-related and other Hazards



This project has received funding from the European
Union's Horizon 2020 research and innovation programme
under grant agreement no 820999.



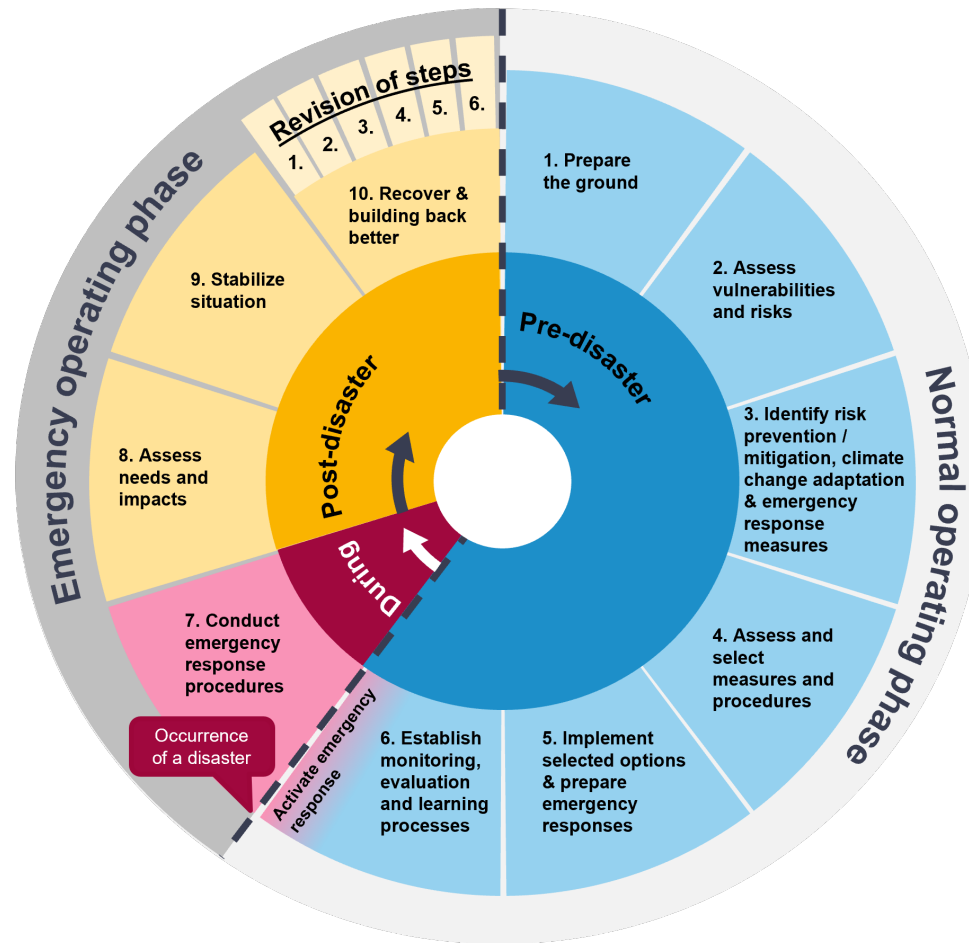


EUROPEAN WEEK OF
REGIONS & CITIES

2003 - 2022

ARCH's Resilience Framework & Tools

New Challenges for
Europe's Cohesion



- Combines climate **change adaptation planning** and **disaster risk management**
- Guidance includes aspects of **heritage management** and **social justice**
- Transferred into CEN Workshop Agreement **CWA 17727**

#EURegionsWeek





EUROPEAN WEEK OF
REGIONS & CITIES

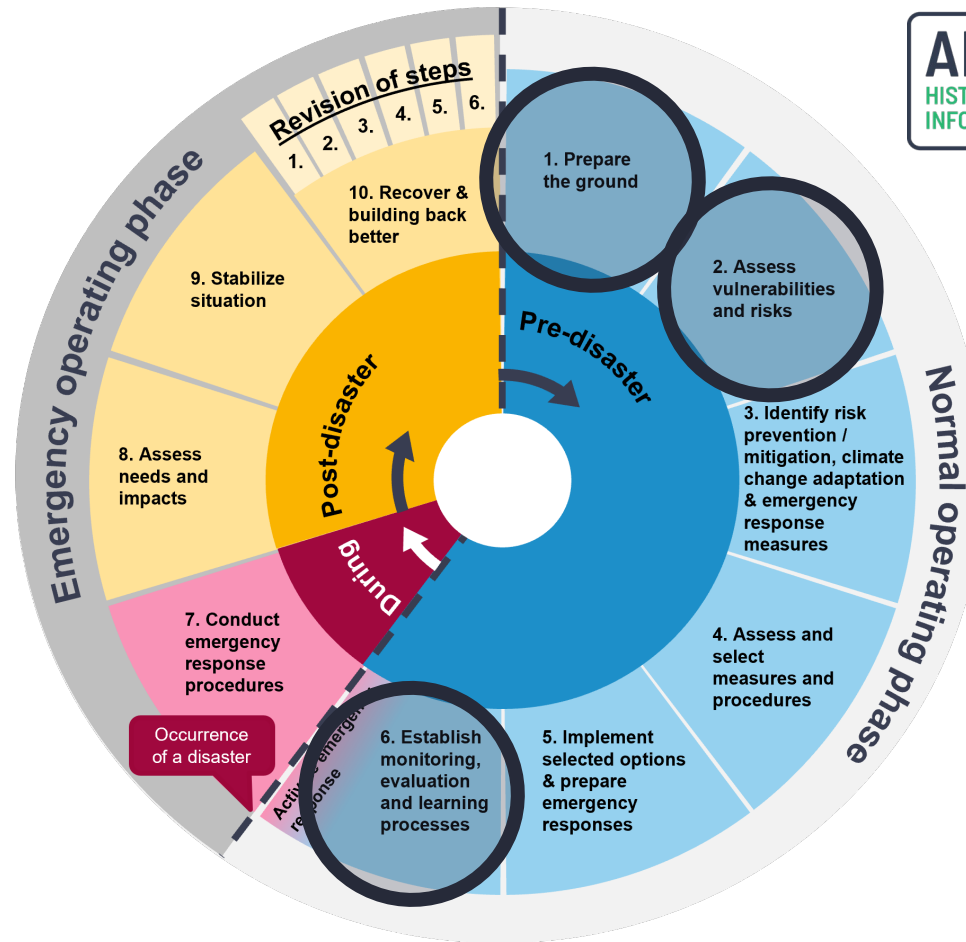
2003 - 2022

ARCH's Resilience Framework & Tools

New Challenges for
Europe's Cohesion

ARCH HARIS
HISTORIC AREA
INFORMATION SYSTEM

ARCH THIS
THREATS AND HAZARD
INFORMATION SYSTEM



- A geo information system for hazard data and area condition





EUROPEAN WEEK OF
REGIONS & CITIES

2003 - 2022

ARCH HARIS & THIS

All your data in one place

New Challenges for
Europe's Cohesion

Socio-economic data
Climate services
3D-Models
and more...

The screenshot displays three overlapping web portals. The top portal is for ARCH HARIS (Historic Area Information System), the middle for ARCH THIS (Threats and Hazard Information System), and the bottom for a 3D map view. The 3D map shows a landscape with green vegetation, brown buildings, and blue water bodies. The interface includes a search bar, navigation menus, and a filter panel on the left with various data layers and classification options.

#EURegionsWeek

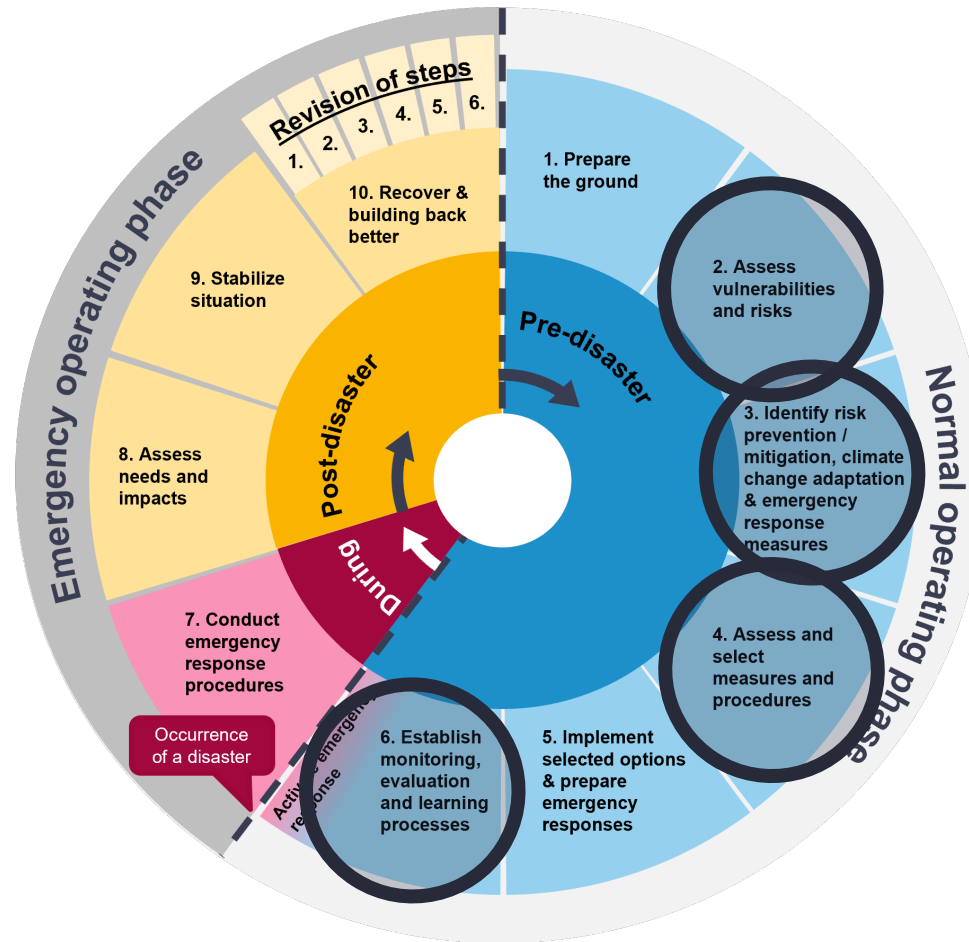




EUROPEAN WEEK OF
REGIONS & CITIES

2003 - 2022

ARCH's Resilience Framework



New Challenges for
Europe's Cohesion



- Dashboards for indicator-based risk analysis

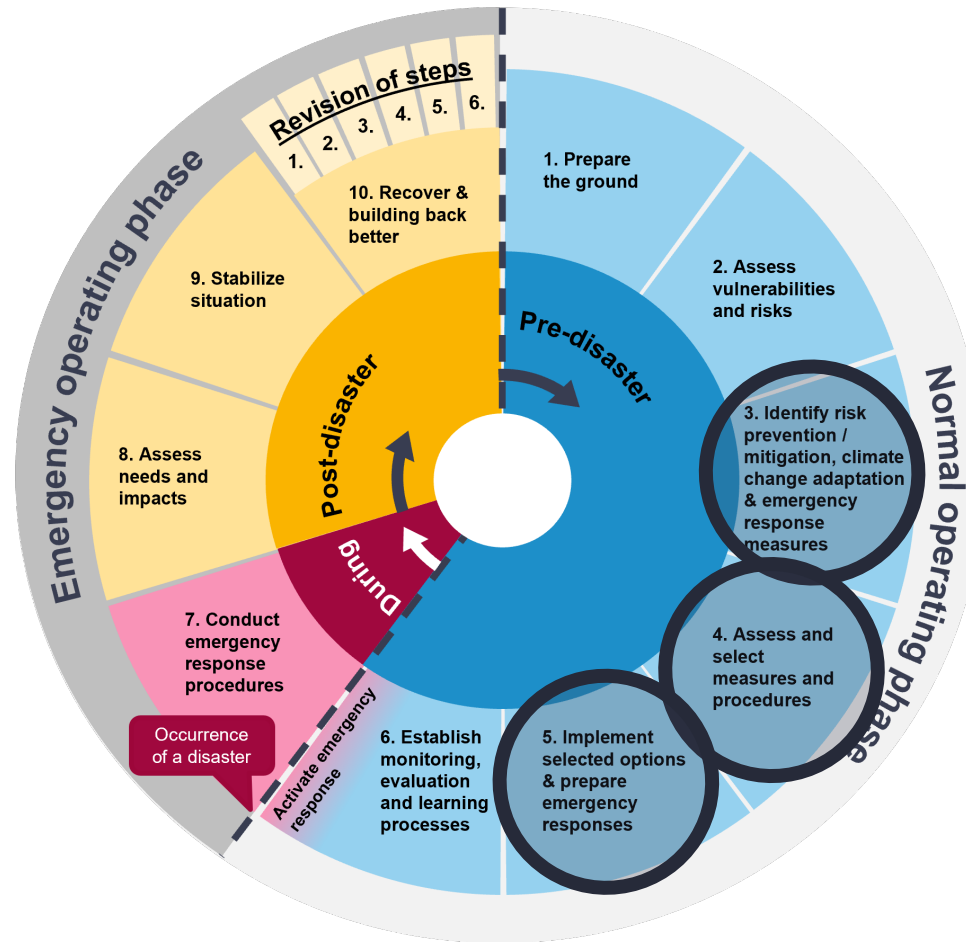




EUROPEAN WEEK OF
REGIONS & CITIES

2003 - 2022

ARCH's Resilience Framework



New Challenges for
Europe's Cohesion



- A database of more than 250 resilience building measures
- A web tool for planning and comparing implementation pathways

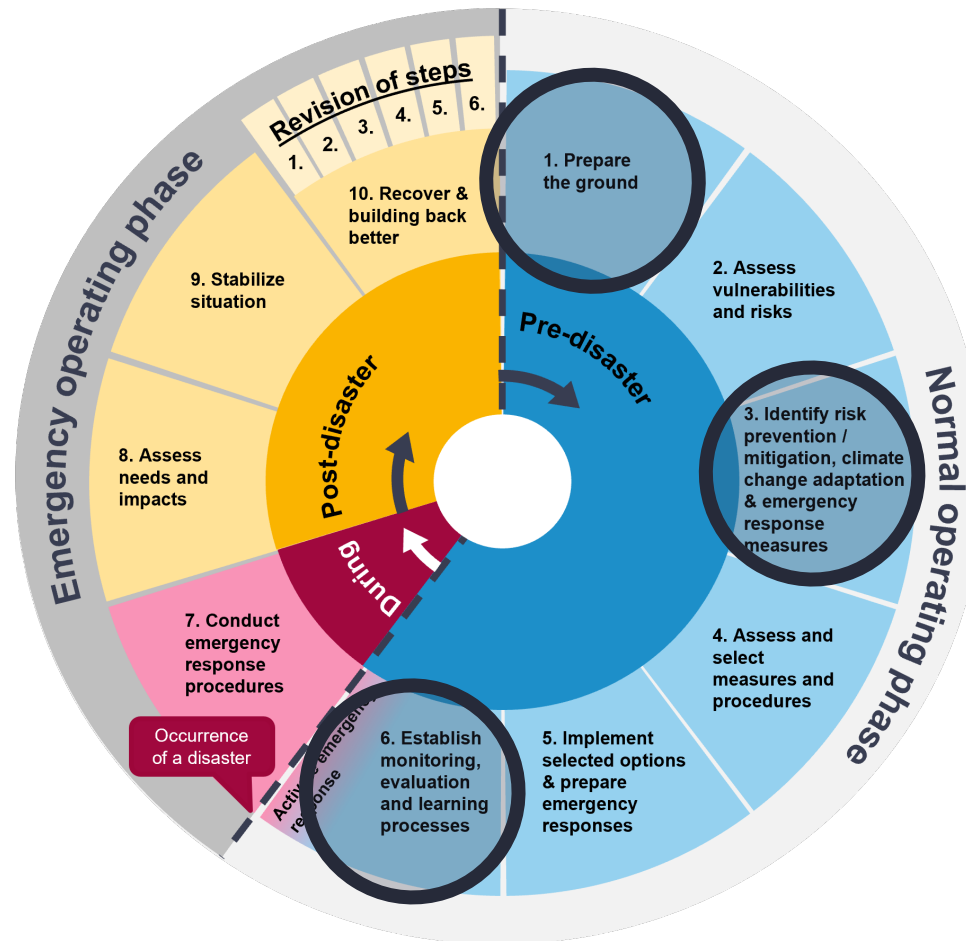




EUROPEAN WEEK OF
REGIONS & CITIES

2003 - 2022

ARCH's Resilience Framework



New Challenges for
Europe's Cohesion



- An online questionnaire to self-assess the resilience maturity of a historic area





EUROPEAN WEEK OF
REGIONS & CITIES

2003 - 2022

ARCH HUB

Your one-stop-shop for resilience building

New Challenges for
Europe's Cohesion

Access all tools and
additional resources at
<https://hub.savingculturalheritage.eu>



ARCH HArIS/THIS

Type: Software, Hardware

Developer: INGV

Topic(s): Disaster Risk Management, Climate Change Adaptation, Heritage Management

[more](#)



ARCH Resilience Measures Inventory (RMI)

Type: Software

Developer: Tecnalía

Topic(s): Disaster Risk Management, Climate Change Adaptation, Heritage Management

[more](#)



ARCH Resilience Assessment Dashboard (RAD)

Type: Software

Developer: Fraunhofer IAIS

Topic(s): Disaster Risk Management, Climate Change Adaptation, Heritage Management, Social Justice

[more](#)



ARCH Resilience Pathway Visualisation Tool (RPVT)

Type: Software

Developer: Tecnalía

Topic(s): Disaster Risk Management, Climate Change Adaptation, Heritage Management

[more](#)

Filter

Type

- Game
- Handbook
- Hardware
- Software

ARCH DRM Framework steps

1. Prepare the ground
2. Assess vulnerabilities and risks
3. Identify risk prevention / mitigation, climate change adaptation & emergency response measures
4. Assess and select measures and procedures
5. Implement selected measures & prepare emergency responses
6. Establish monitoring, evaluation and learning processes
7. Conduct emergency response procedures
8. Assess needs and impacts
9. Stabilize situation
10. Recover & building back better



#EURegionsWeek

