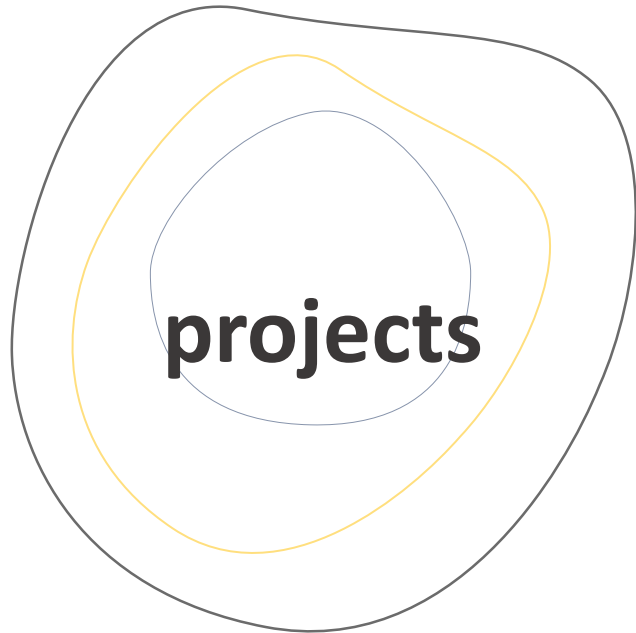




Commission- led NEB Lab projects



Commission-led projects:

Labelling strategy

Regulatory analysis and experimentation

Innovative financing

[Transforming places of learning](#)

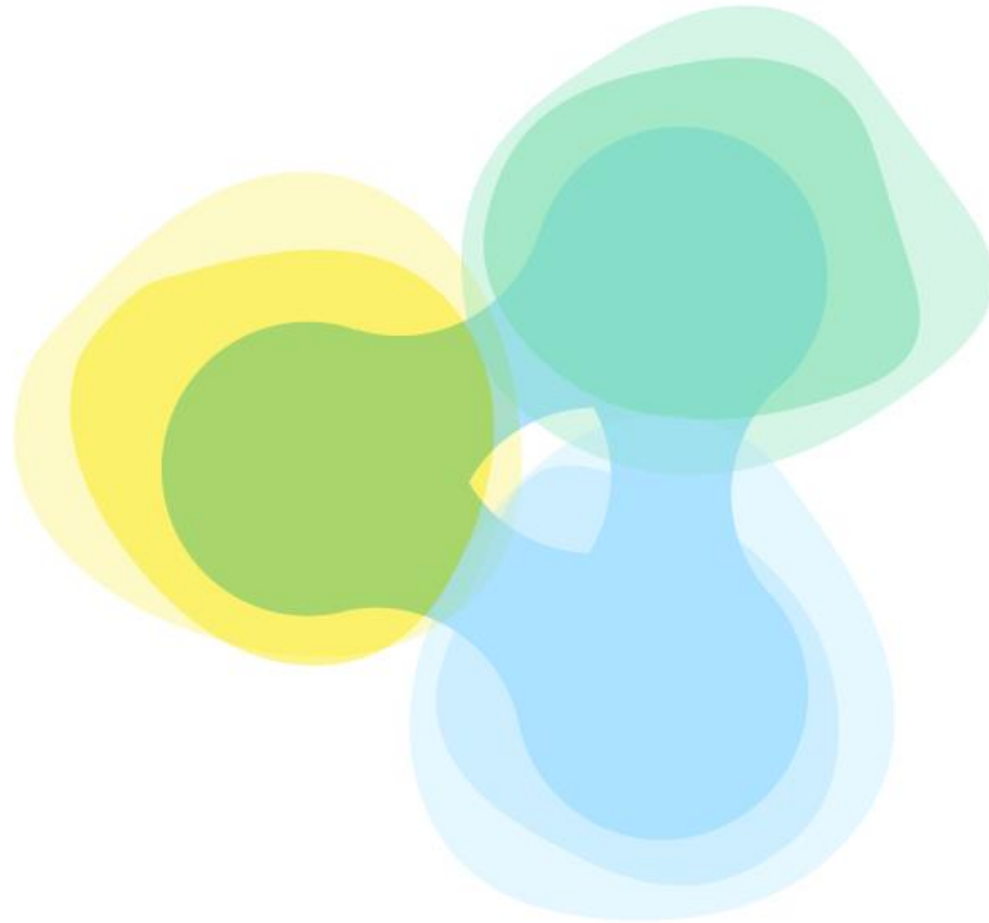
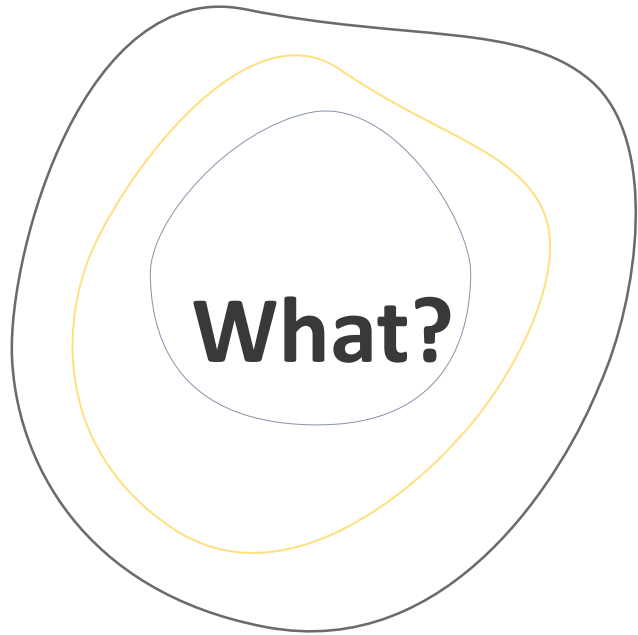


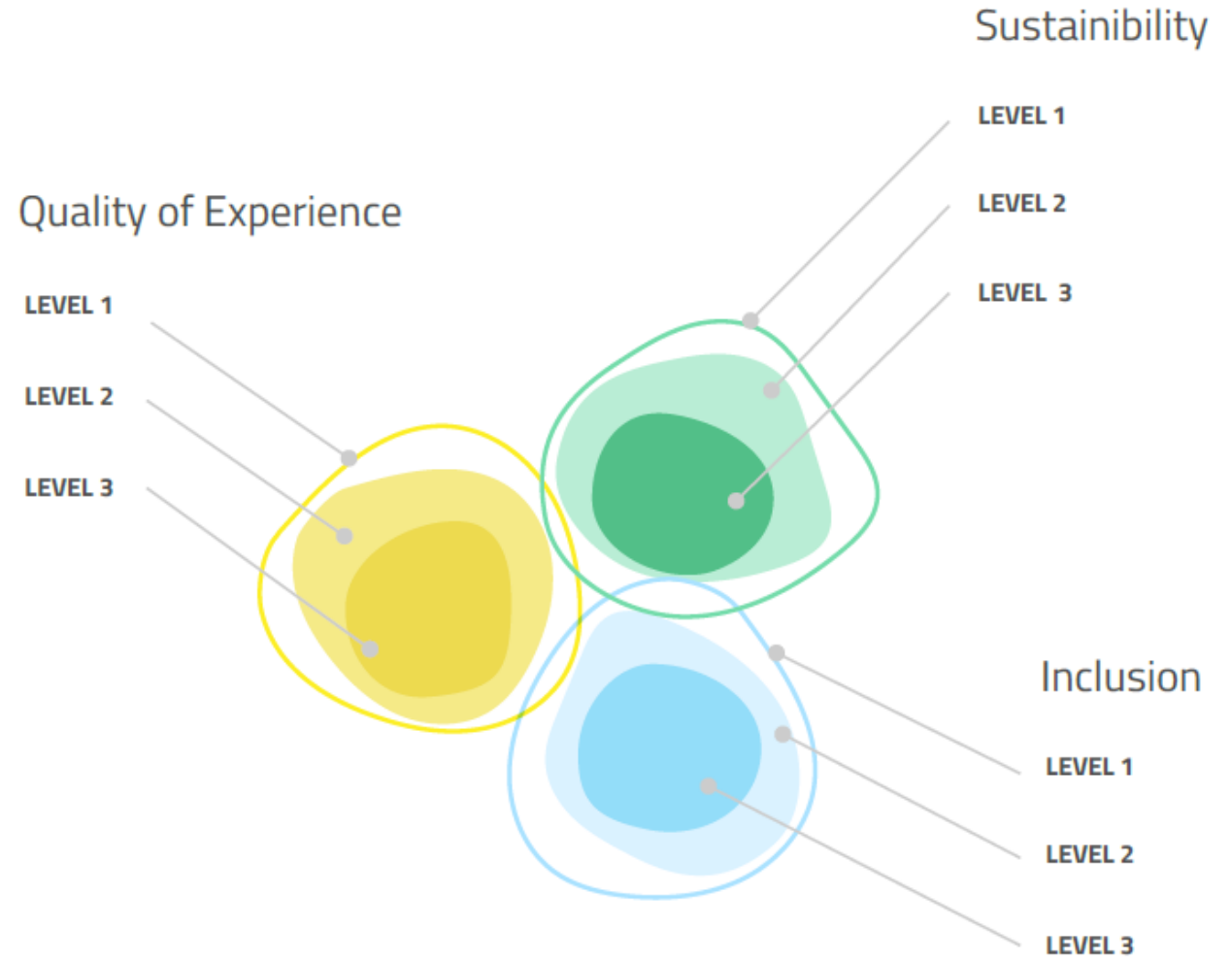
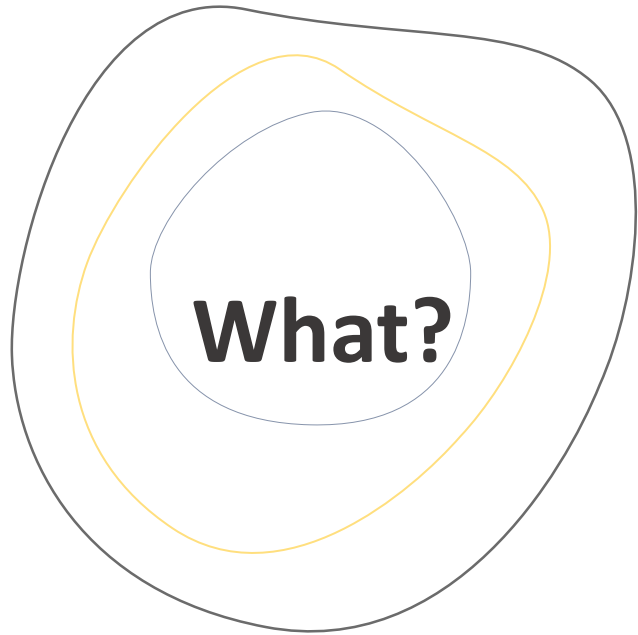
Labelling strategy

supports the **definition, identification**
and **development** of New European
Bauhaus transformation projects.

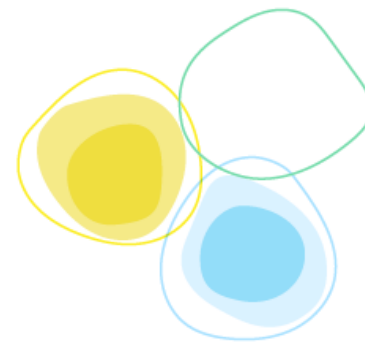
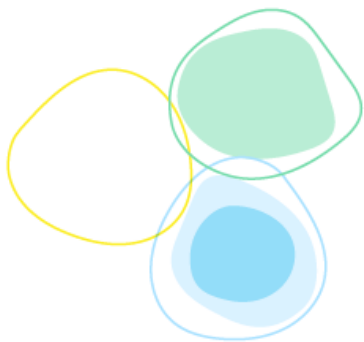
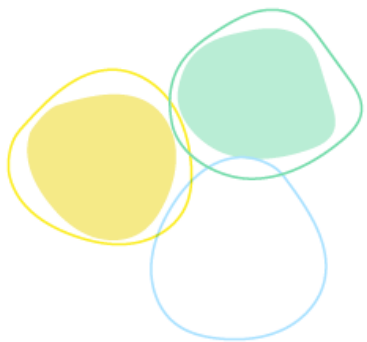
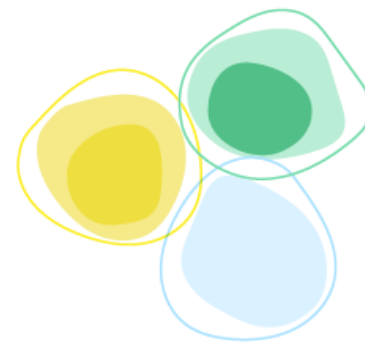
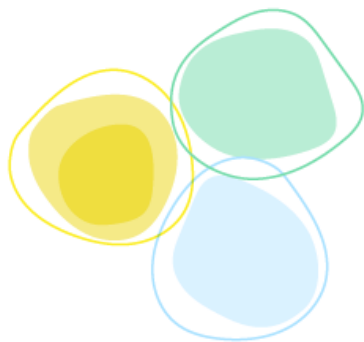
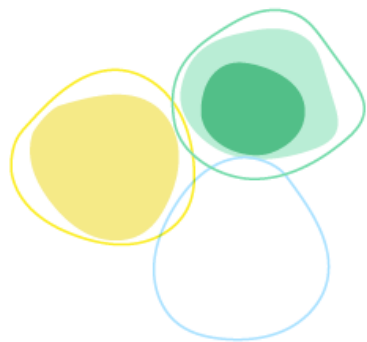


- The **New European Bauhaus Compass** will cover any type of New European Bauhaus project. It will also guide the development of generic policy and funding initiatives both at EU level and within the Member States.
- A series of specific **Self-assessment tools** to align with the NEB dimensions during the design and implementation of transformation projects.

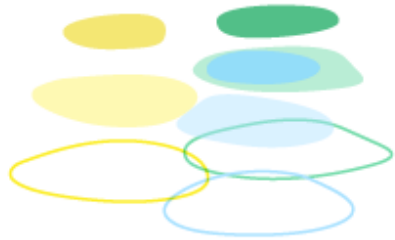
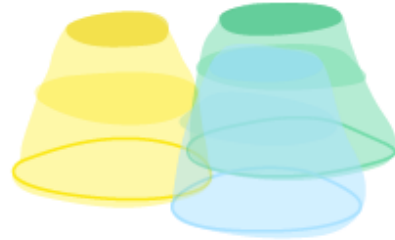


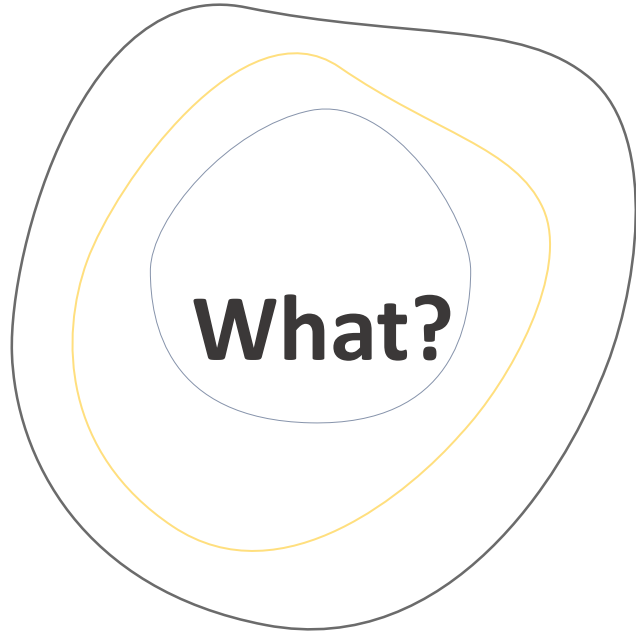


Compass



Compass





- **Assessment:**

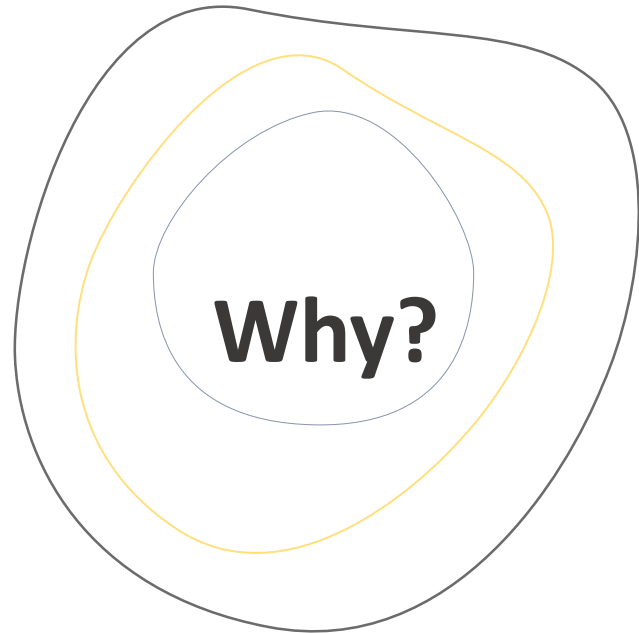
Estimate the performance of a project

- **Evaluation:**

Determine to which degree a set of objectives and/or criteria is satisfied



- **Compliance** = responsiveness/adherence to the NEB values: (beautiful, sustainable, together) and working method (participatory, transdisciplinary, multi-level)



- **Benchmarking and learning**

vis-à-vis peer organisations / individuals / communities)

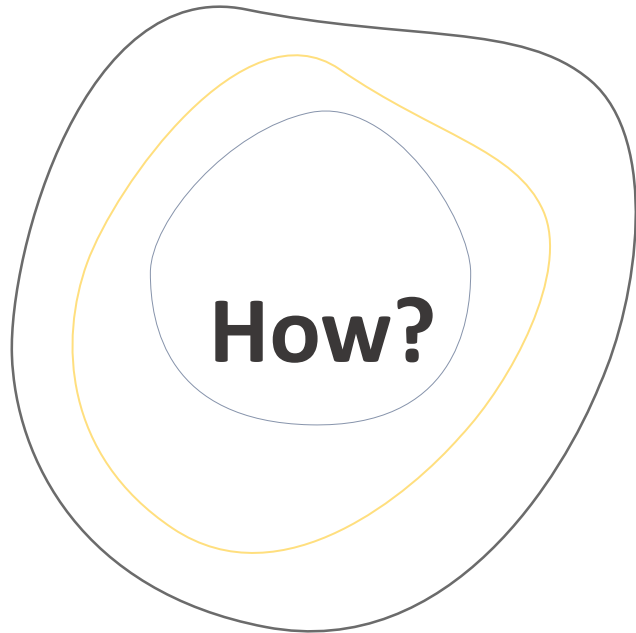
- **Advocacy**

to make sure people and communities understand and support NEB = create a common language)

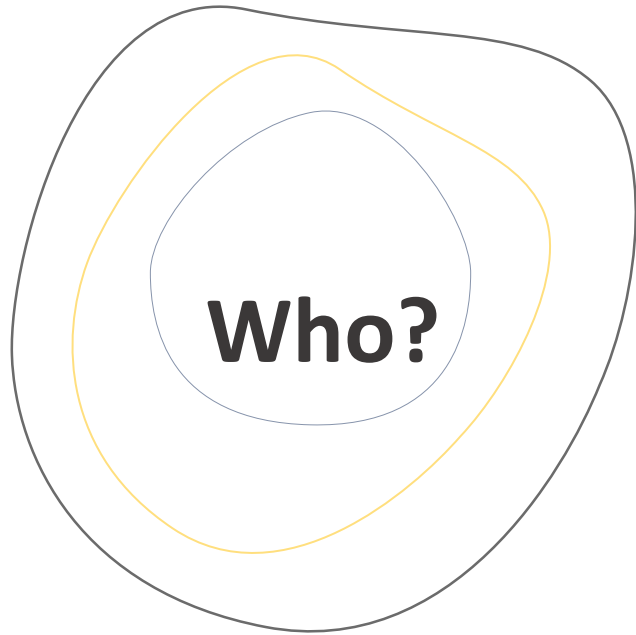
- **Measuring change**

on policies, behaviours, values...or other kinds of **impact** (on economy, environment ...)

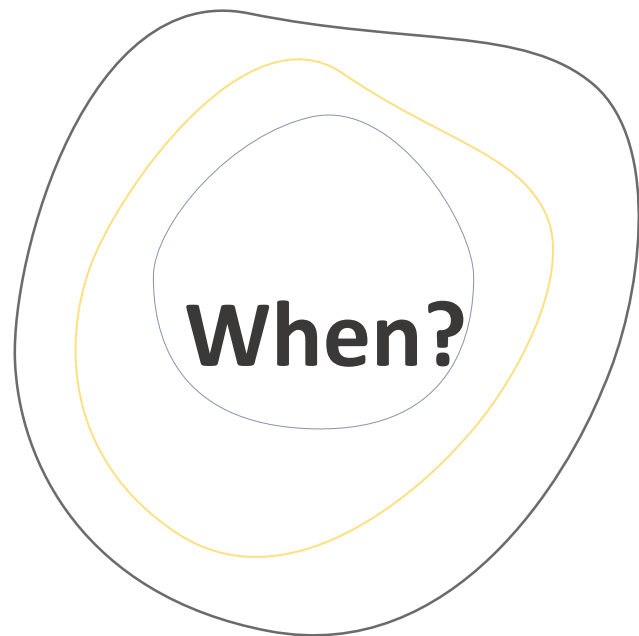
Increased coherence -> higher impact!



- Done with a large community of interested experts – collaborative approach “gaining terrain from inside”
- Building on established frameworks and existing guidance
- We use the **lab approach**: exploring and testing
- Implemented via the Preparatory Action of the EP on a “NEB Knowledge Management Platform”.
- Gradual approach: we could have **first results by end of 2022** and continue growing



- **The Core Team** will and inspire the initiative
- **A group of Experts** will bring technical knowledge and investigate on the existing literature and regulation
- **The NEB Lab** will provide feedback on the research of the Core Team. It will also select, initiate and follow-up a certain amount of test projects
- **Users:** Citizens, Grassroots organizations, Municipalities, Experts, technicians...



Test the draft Compass and publish it; mobilise expertise to work on the self-assessment tool	April 2022
Overview and classification of the existing requirements and standards, guidelines, codes of practices related to the three dimensions of the NEB for buildings and other living spaces.	May June 2022
Definition of a specific taxonomy to address the three dimensions of the NEB for buildings and other living places as part of the EU taxonomy.	June 2022
Creation of a self-assessment compass based on the defined taxonomy and on the existing requirements. (about 2 months to define the taxonomy; then work on the digital tool)	From July to October 2022
Iterative testing and co-creation of the Self-assessment tool with interested stakeholders from the NEB Community	From July to October 2022
Launch of a beta-version of the tool Planning of next actions: Beyond the built environment	December 2022



Regulatory analysis and experimentation

sets out to analyse how the regulatory framework on European, national, regional or local level can support the development of New European Bauhaus projects.



- First step: **Built environment and construction sector**
- **Survey** to collect experiences with local, regional, national and EU legislation in the built environment and construction sector
- Share **existing analysis** (report, study or policy paper) on Regulatory Analysis
- Who: Architects, designers, engineers, urban planners, public servants, companies and citizens



- Interdisciplinary core team, including members of the HLRT, EU Commission and NEB Partners
- Participatory sensemaking workshop to map regulatory barriers and enabling frameworks
- Results will be brought to attention to relevant policymakers when reassessing current legislation and developing future regulation



- **7 April - 30 June 2022:** Survey open for contributions
- 28 April 2022, 14:00-15:00: Info session
- June 2022: Discussion and first stock-taking at NEB Festival
- Autumn 2022: Report with survey results

Participate in the survey
[share your experience](#) from
7th of April



Transformation of places of learning

collects and **connects** transformation initiatives, proof of concepts and good practices **for future** formal and informal **learning environments**.

Participate in the project
[share your project](#)



Innovative funding - pilot for joint funding with philanthropy

explores **innovative funding solutions** and modalities **to mobilise private funding** for New European Bauhaus activities for which traditional EU, or other, instruments and expertise are insufficient or inappropriate.



Innovative funding – crowdfunding and public funding

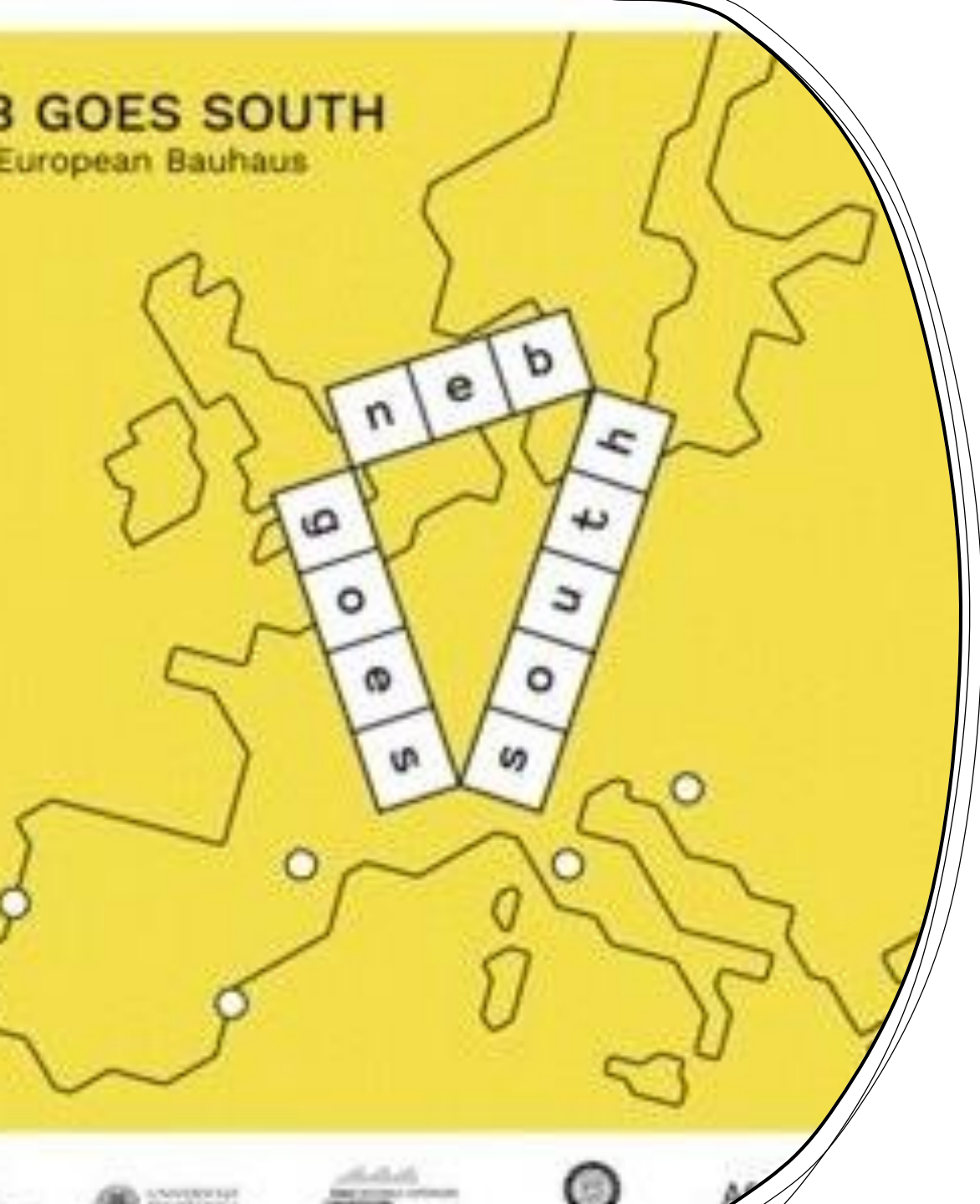
aims to **identify, co-design** and **pilot** models of pooling **private and public resources** and directing them where most needed to support New European Bauhaus transformation projects.



Nordic Carbon Neutral Bauhaus

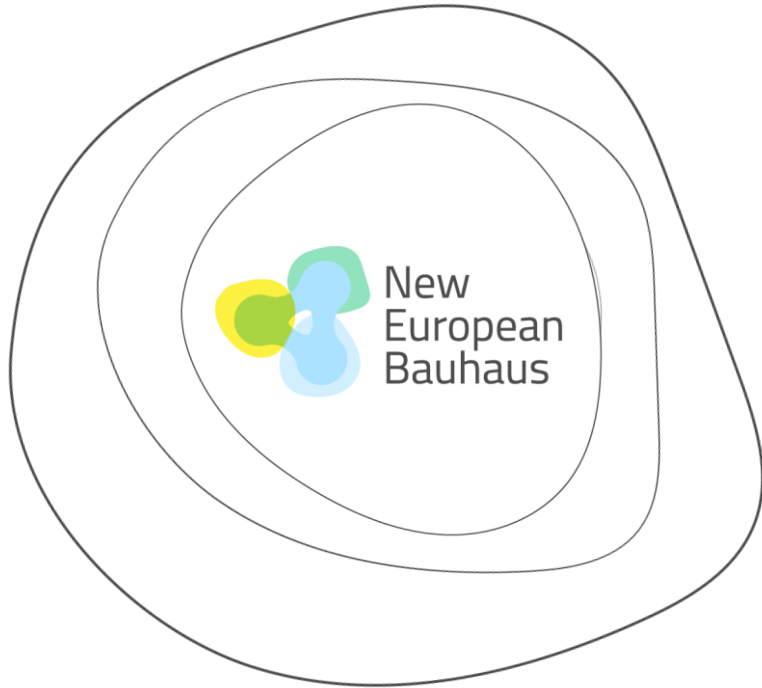
- coordinated work of the Nordic Council of Ministers for Sustainable Cities for places in the North, interested in the Initiative (rural and urban)
- **topics:** carbon neutrality in built environment, rethinking building and living

3 GOES SOUTH
European Bauhaus



NEB goes South

6 schools of architecture from 6 different countries joined forces to create a pan-European platform for meetings and discussion to broaden and enhance international debate on co-designing sustainable solutions while bringing people from different backgrounds together.



Contacts:

#NewEuropeanBauhaus

Web: <https://europa.eu/new-european-bauhaus>

Instagram: @neweuropeanbauhaus

Pinterest:

<https://www.pinterest.com/eucommission/new-european-bauhaus/>

Newsletter:

https://europa.eu/new-european-bauhaus/stay-touch/e-zine_en





Thank you !