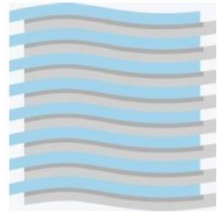


Pan-European Dialogue

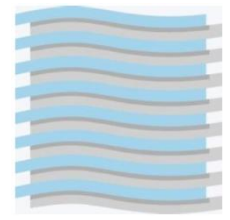
5-6 March 2015, Brussels

**„Challenges and Opportunities for
Cruise Tourism in the Baltic Sea “**



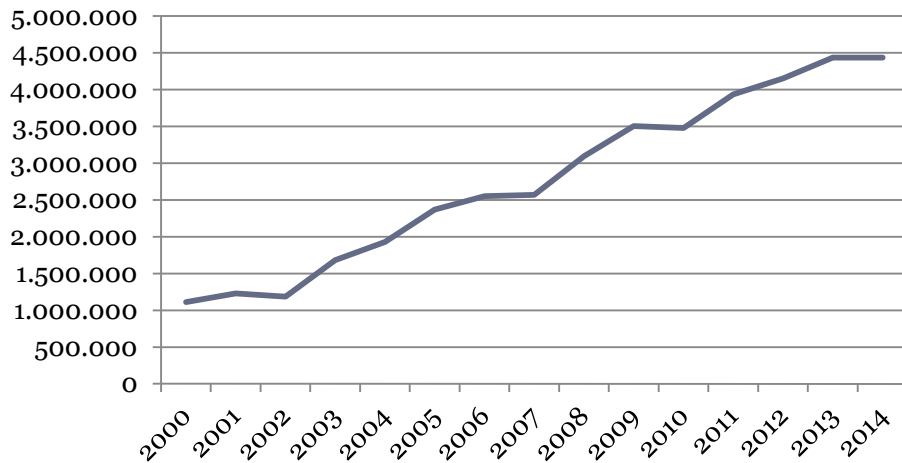
The Baltic Sea Parliamentary Conference

- founded in 1991
- parliamentarians from 11 national parliaments, 11 regional parliaments and 5 parliamentary organizations
- annual conferences and resolutions vis-à-vis the relevant BSR actors
- unique parliamentary bridge between all the EU- and non-EU countries
- BSPC external interfaces include CBSS, HELCOM, NDPHS, the Baltic Sea Labour Network, the Baltic Sea States Sub-regional Cooperation (BSSSC) and the Baltic Development Forum

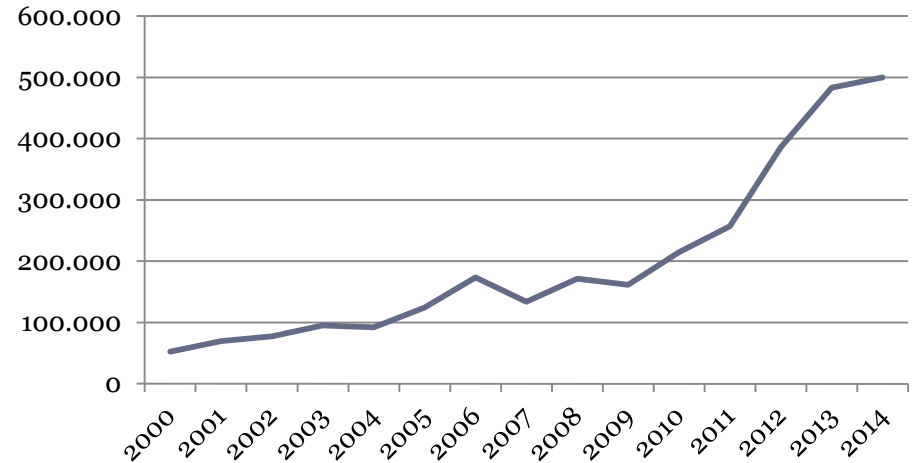


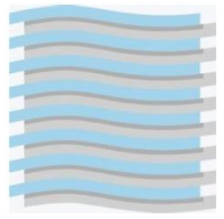
Passenger Numbers in Rostock and Baltic Sea ports

Baltic Sea ports

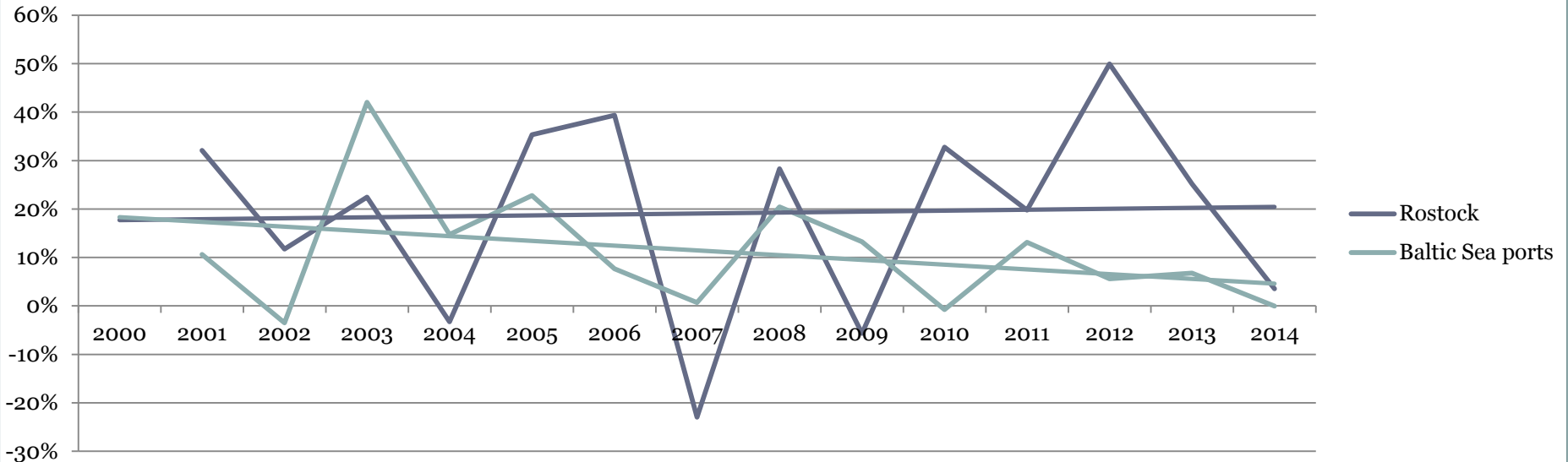


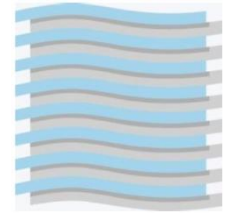
Rostock





Passenger Numbers in Rostock and Baltic Sea ports - Annual Growth -

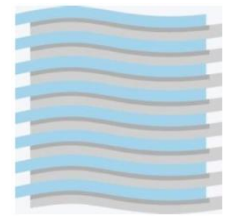




Paragraph 13 of the 23rd BSPC resolution from Olsztyn

[The legislators from the Baltic Sea Region call on the governments in the Baltic Sea Region, the CBSS and the EU to...]

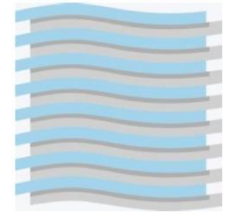
proceed with strong efforts and dedicated resources for the continued improvement and modernization of the waste water treatment capacity throughout the entire Baltic Sea Region, in compliance with the stricter threshold values agreed by HELCOM, and to ensure continuous work to upgrade reception facilities for sewage in passenger ports in line with the Special Area Status of the Baltic Sea under MARPOL Annex IV of the International Maritime Organization.



Challenge 1: Waste Water Treatment Capacities

2011: RESOLUTION MEPC.200(62) Adopted on 15 July 2011

- IMO designates the Baltic Sea as a "**special area**" for passenger ships in terms of MARPOL Annex IV
- The **discharge of sewage** from a passenger ship within a special area shall be **prohibited**: a) for new passenger ships on or after 1 January 2016; and b) for existing passenger ships on or after 1 January 2018
- Each Party ... undertakes to ensure that **facilities** for the reception of sewage **are provided in ports** and terminals which are in a special area and which are used by passenger ships ...
- coastal countries shall report to IMO (MEPC) that the **sewage reception facilities** in the Baltic Sea ports **fulfill the criteria of adequacy**, before the "special area" regulations will take effect on 1 January 2016, at the earliest



Challenge 2: Sulphur emissions

- **Directive 2005/33/EC** has designated the **Baltic Sea**, the North Sea and the English Channel as **SECAs** – maximum sulphur content of the fuels used by ships operating in these sea areas limited to 1.5%
- Stricter rules for **MARPOL Annex VI** – adopted in October 2008 and entrance into force in July 2010, which are basis for **Directive 2012/33/EU** – include a **0.1% limit for sulphur content** in onboard fuel oil as of **1 January 2015**
- New rules are both a **challenge** for the competitiveness of the special areas **and** an **opportunity** to modernize structures and invest in a healthier environment