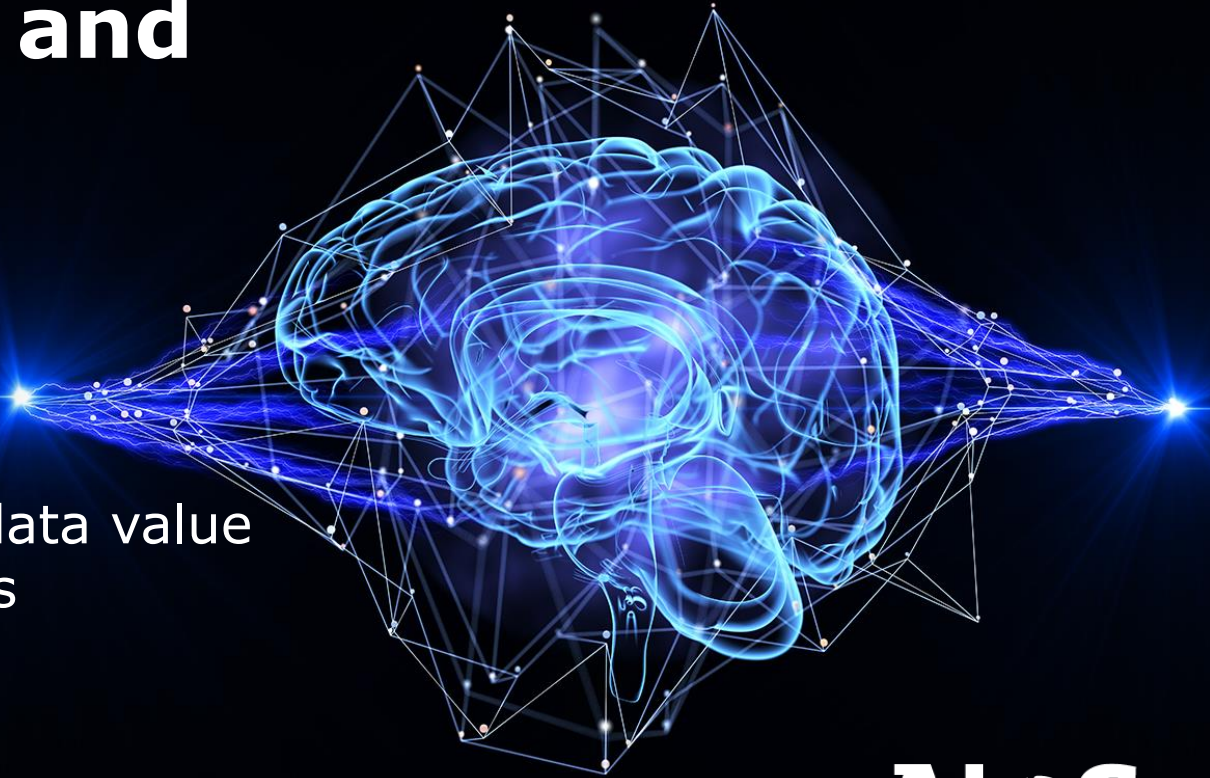


# Data Sharing and Data Spaces

Unlocking stakeholder data value  
in Industrial Ecosystems

*Hubert Tardieu*  
*September 16, 2019*

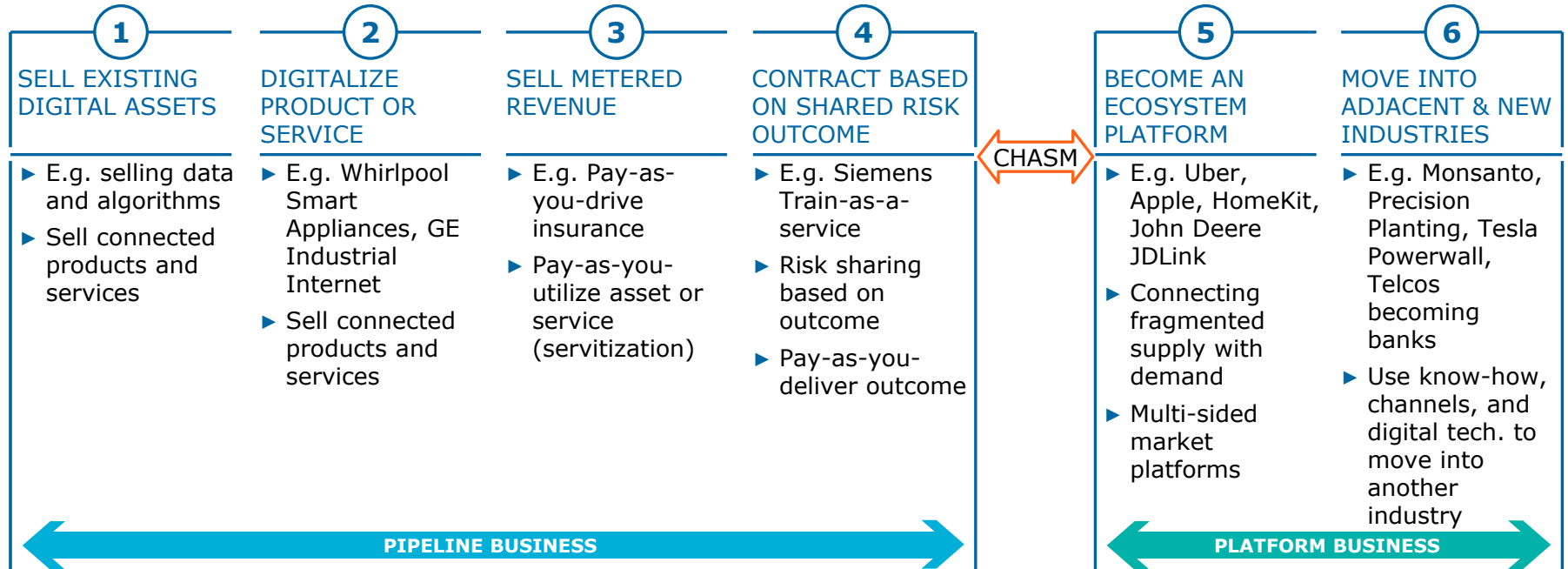


**Atos**

# Digital Transformation in Business to Business: SERVITIZATION OR PLATFORM ?

less transformative

more transformative

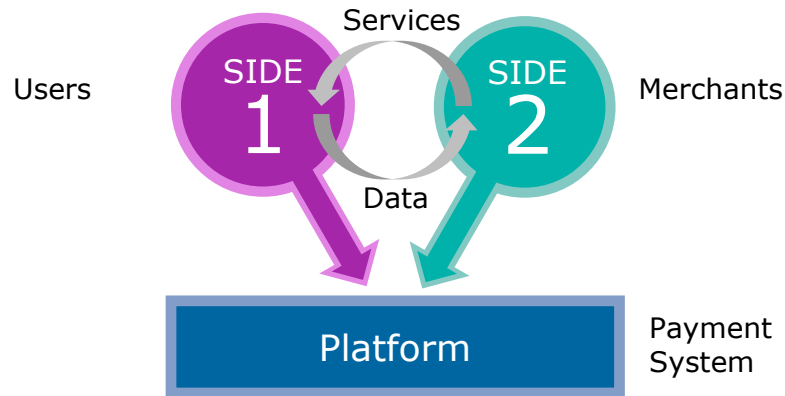


A large white outline of the number 1 is positioned on the left side of the slide. The background is a solid blue color with a faint, light-colored network pattern of interconnected nodes and lines.

# The B-to-C world and the rise of platforms

# Economy of Data

An "Economy of Data" organization targets potential users and providers of data to form a multi-sided market, building shared data asset platforms to be used by the participating players



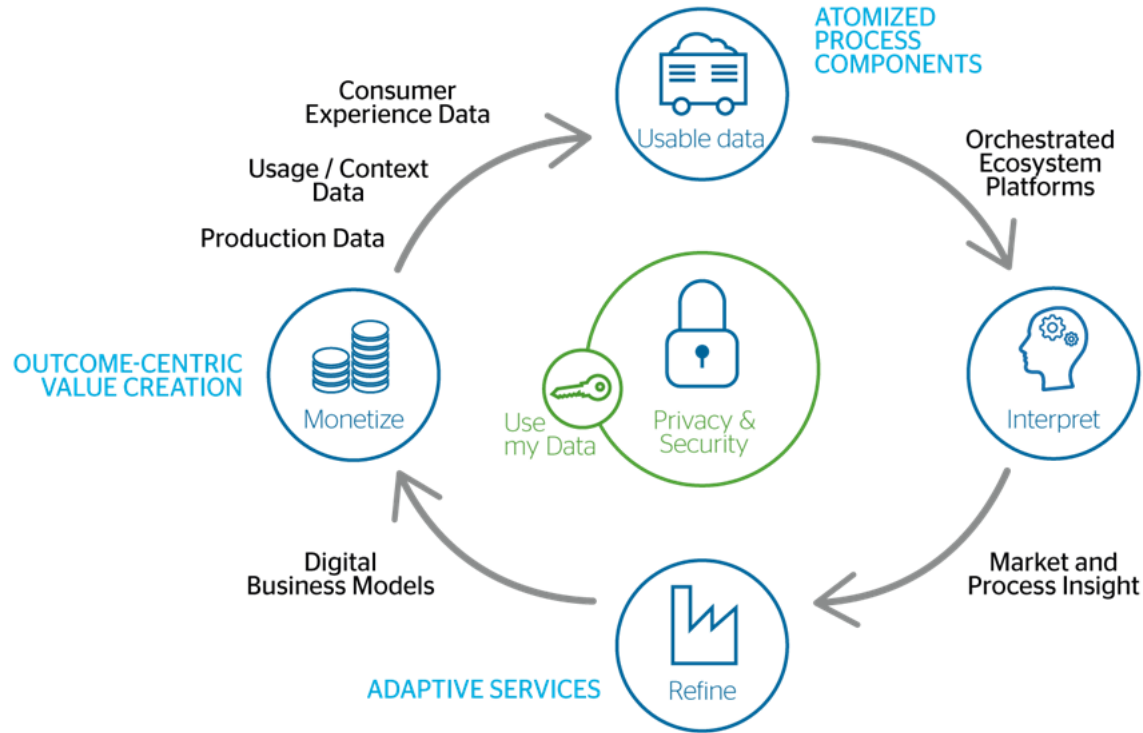
A large, white, stylized outline of the number '2' is positioned on the left side of the slide. The background is a solid blue color with a faint, light blue network pattern of interconnected nodes and lines. A white horizontal line extends from the bottom of the number '2' across the width of the slide.

2

The world of B-to-B

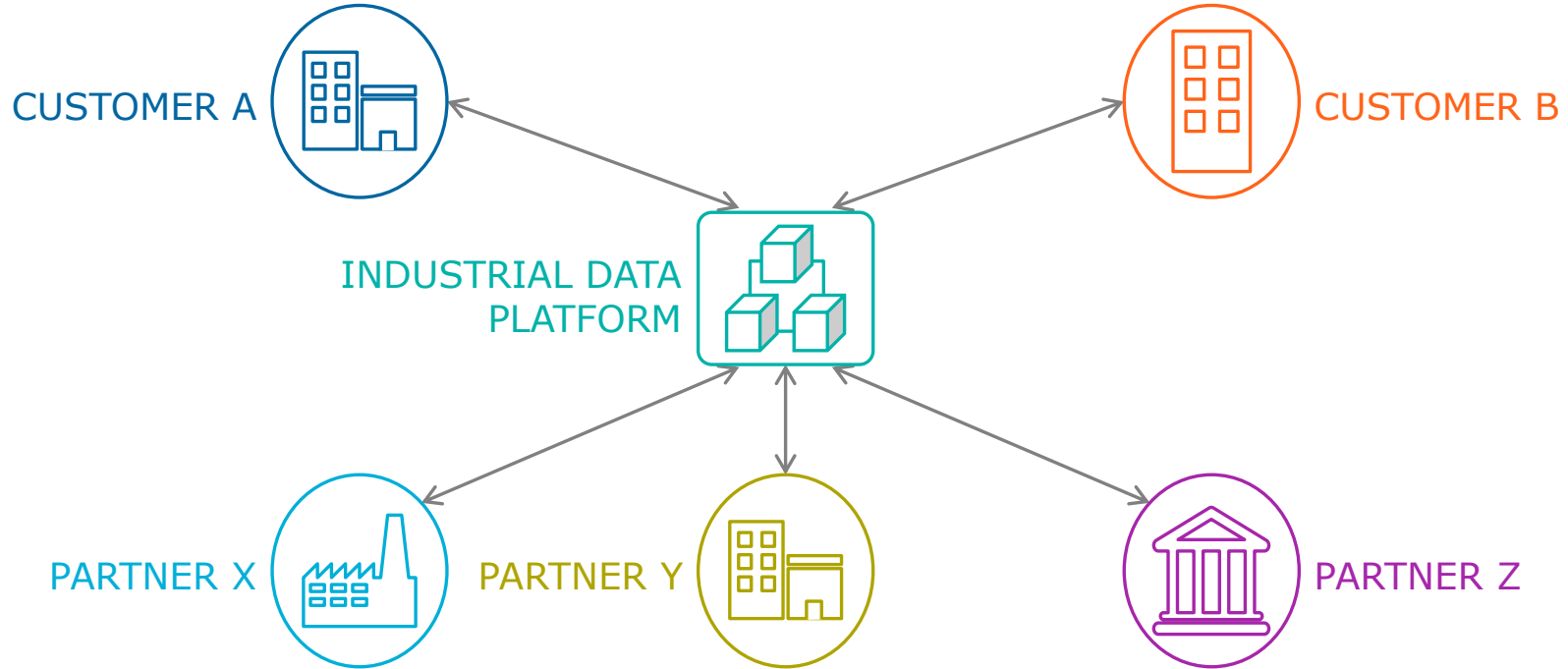
# Value creation

## THROUGH DATA-DRIVEN SMART SERVICES



# Data Monetization for B2B

In the company ecosystem

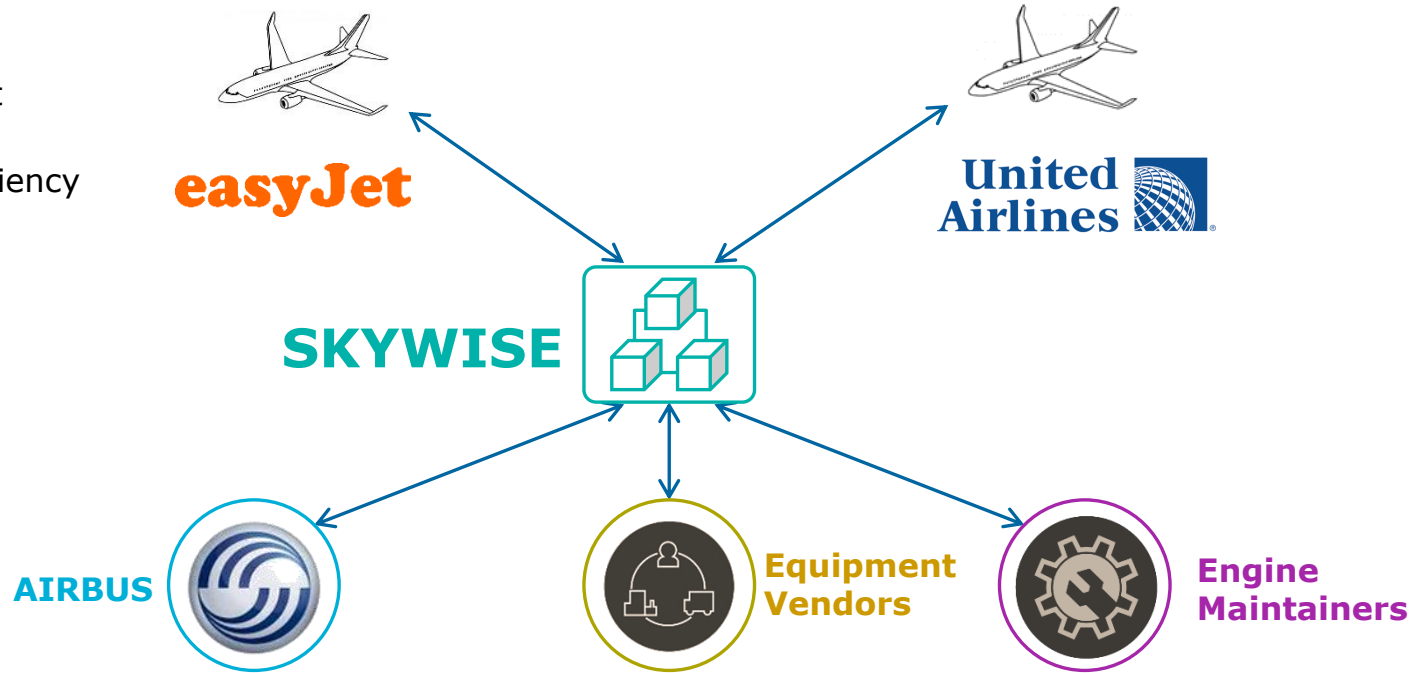


# The example of Skywise:

## A platform for the Airline Industry

### Platform Objectives

- ▶ Shorter time to market
- ▶ Increase Flexibility
- ▶ Boost Operational Efficiency





# 3

## THE CHALLENGE OF DATA SOVEREIGNTY FOR PLATFORM DEVELOPMENT

AV, HEALTH, SMART METERS, OPT-OUT  
and REGULATORY SANDBOXES

---

# NEW REGULATION FOR AUTONOMOUS VEHICLES (VEDECOM)

## CURRENT LEGISLATION FOR FRENCH EXPERIMENTATION

### PACTE new law

- Article 43, **providing new conditions for experimentations of autonomous cars on open roads**
- Tests with **no driver** on board but outside of the vehicle are made possible.
- Driver concept being **clarified**
- Precisions on **civil and criminal responsibility** regimes are given in the context of experimentations.
- Testing autonomous vehicles on **public transport specific lanes** are allowed only for public transportation services only. Discussions on going to let local police authorities decide for other types of vehicle on a case by case basis.
- The process for getting experimentations **authorizations is clarified**
- Driver is exempted from criminal liability when the ADS is on within its normal function specifications.

### LOM: Law on new mobilities

- This law will now be adopted mid 2019.
- It deals more with real life and legal framework for autonomous vehicles deployment.
- It aims at clarifying several items such as:
  - Foreseeing driver's inattention and driver absence.
  - Driver attention and inter-distances
  - Traffic law revision
  - Liabilities in case of an accident
  - Data protection and privacy
- France in favor of a European legal framework which would help the creation of an industrial specific sector at a European Union level.

Still need to modify the Vienna Convention to allow driving without any driver in control of the vehicle

## HEALTH IS MOVING FROM OPT IN TO OPT OUT FOR EVERY NEW BABY AFTER 2021

---

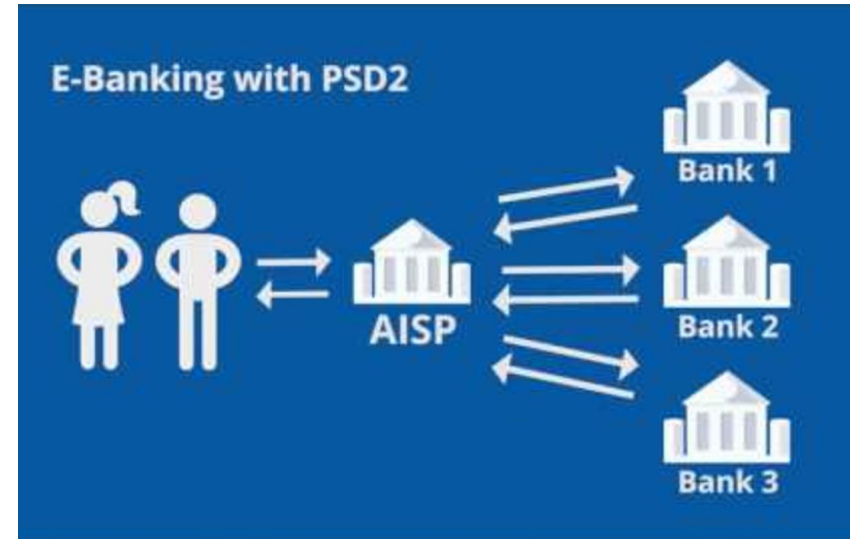
- ▶ Health is going through a significant transformation with PRECISION MEDICINE
  - Progress requires data sharing between Payers (SS, INSURANCE) and Providers (hospitals, pharmaceutical companies....)
- ▶ Electronic Health Records:
  - Historically EHRs have been created with the permission / request of patients (opt-in)
  - After 2021 every new baby will have EHRs created by default, unless parents choose to opt-out
- ▶ Organising and orchestrating trusted and secure Health Data Platforms are crucial pre-requisites for sharing the data necessary for Precision Medicine



# Financial Industry: PSD2 is paving the way for a new financial services platform economy

The European Commission has introduced PSD2 (Payment Services Directive 2 – Jan 2018), a regulation which will significantly boost the emergence of Ecosystems in the financial services market.

- Financial institutions are obliged to offer open API access for other companies to view the data assets of accounts
- Creation of platforms for a whole range of new financial services
- The financial institution is still managing the data and remains responsible for all security and data protection aspects, but will be forced to unlock the value of data



# 4

## Data Usage Control

# Technical vs. Organisational/Legal Enforcement

## Stages of usage control

Usage Control extends, replaces and supplements existing contractual and organizational enforcement

→ Long-term Goal:

Technical Enforcement compensates Organisational/Legal Enforcement



# COMPLIANCE MODEL

## the case of smart meters

An ecosystem which includes smart meters

A third party validates access

Data access regulated for a large group of players



Smart Meter Platform



Electricity Providers



Aggregators

Nest Camera



Service, Insurance



Electricity Distributor, Territory



Clear specification of data usage for a specific service (GDPR Compliant) validated by user



# Implementing « Sandboxes » will be the way forward

---

- **Ecosystem partners define shared data and associated services**
- **Each partner offering service defines data usage control for their service**
- **Accepting service and associated data usage control is an implicit opt-in**
- **Partners are responsible to technically implement data usage compliance [this can be delegated to platform operator]**



# Thank you!

---

Atos, the Atos logo, Atos Codex, Atos Consulting, Atos Worldgrid, Bull, Canopy, equensWorldline, Unify, Worldline and Zero Email are registered trademarks of the Atos group. April 2016. © 2016 Atos. Confidential information owned by Atos, to be used by the recipient only. This document, or any part of it, may not be reproduced, copied, circulated and/or distributed nor quoted without prior written approval from Atos.

The Atos logo is displayed in a bold, white, sans-serif font. The letter 'o' is stylized with a white dot in the center, resembling a network node. The logo is positioned in the bottom right corner of the slide, set against a blue background with a faint network pattern of white lines and nodes.