

SmartAgriHubs

Connecting the dots to unleash the innovation potential for digital transformation of the European agri-food sector

George Beers

Coordinator

DIH Workshop, 3 April 2019, Brussels



Agricultural Digital Innovation Hubs

- Acts as one-stop-shop in proximity of the farmers
- Support facility for companies (SMEs)
- Enables access to the latest knowledge, expertise, and technology
- Provides connection with investors
- Already exist on the ground, i.e. KIC of EIT



SmartAgriHubs in numbers (20M€)



108 Partners
Involved covering all EU

68 partners are SMEs

54% of budget allocated to SMEs



28 FIEs

22 Countries involved

13 Cross-border collaboration FIEs (47%)



30M additional funding mobilized from other sources (public, regional, national and private)

80 new digital solutions introduced into the market

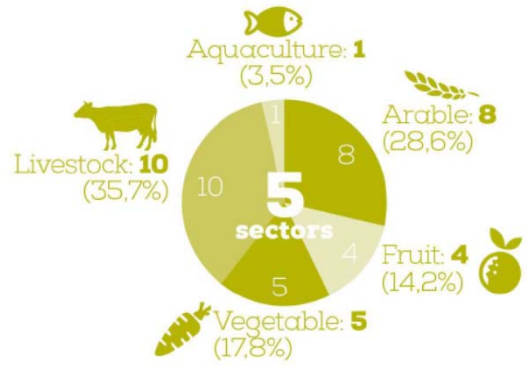
2M Farms involved in digitisation



140 DIHs in the existing Network covering all **28 Member States**

Regional Approach – **9 Regional Clusters**

Attract **260 New DIHs**



6M EUROS distributed through Open Calls

75% of Open Call budget to SMEs

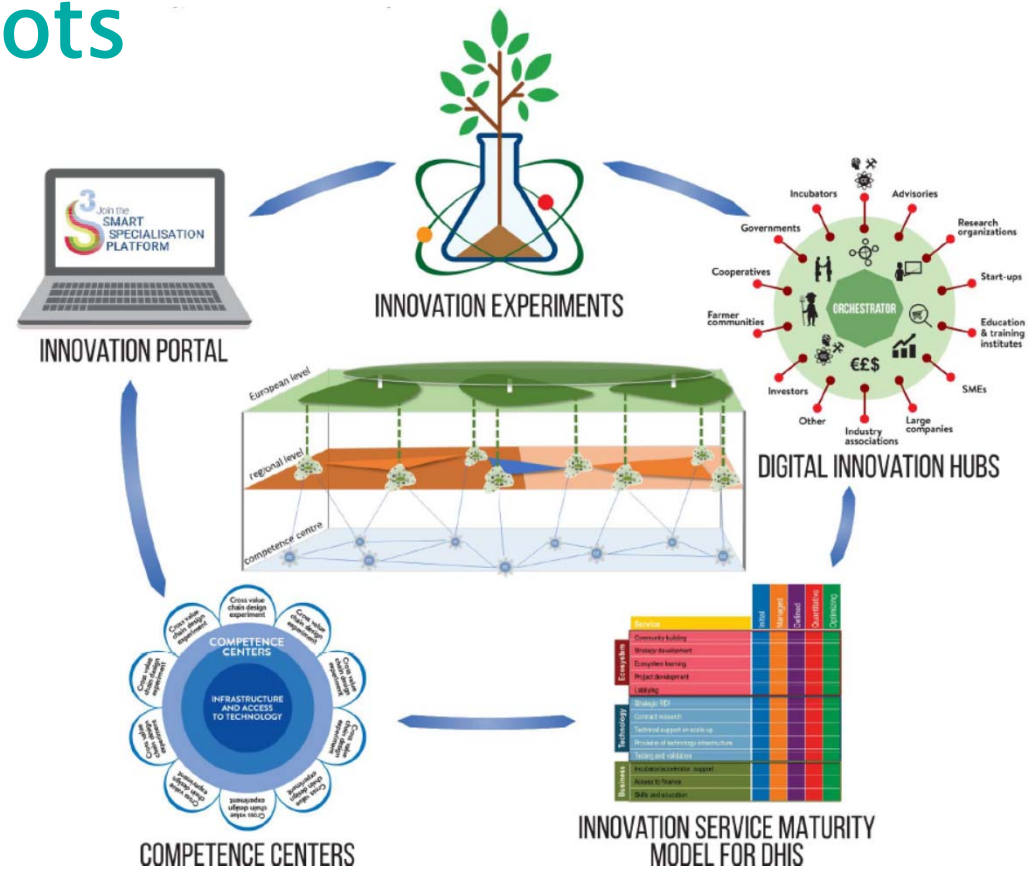
70 New Innovation Experiments

Connecting the Dots

Innovation Portal for connecting DIHs EU-wide with:

- Other DIHs and their services
- Competence Centres
- Innovation Experiments
- Re-usable components
- Test and demonstration Farms

➔ To facilitate DIH services

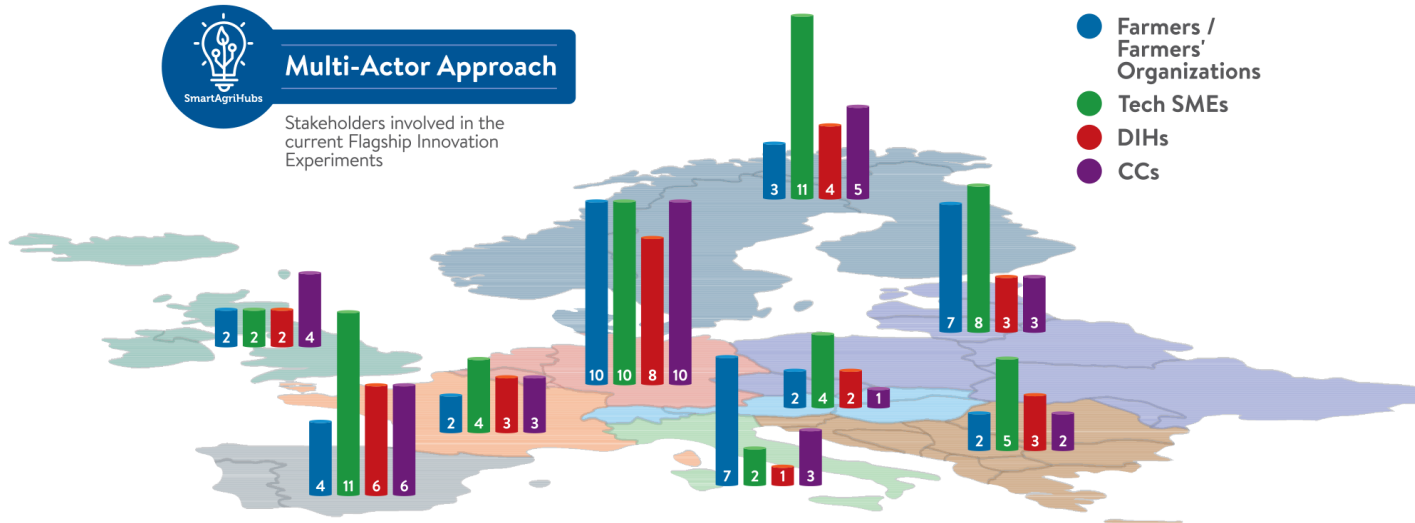


INNOVATION EXPERIMENTS FACILITATED BY DIHS FROM 9 REGIONAL CLUSTERS



Stakeholders involved in the current Flagship Innovation Experiments

- Farmers / Farmers' Organizations
- Tech SMEs
- DIHs
- CCs



REGIONAL CLUSTERS



Roles in the regions: Initiate and (financial) facilitation DIH development
 Financial Participation in (different types of) Open Calls
 Sustaining DIH: Ownership, e.g. PPPs

European Public–Private ICI projects – Building the Ecosystem

2011-2013: **SmartAgriFood** – a FIWARE-based conceptual architecture and prototype applications (5 M€)



2013-2015: **FIspace** – B2B business collaboration platform for agri-food & logistics (+ apps) (13.5 M€)



2014-2016: **Accelerators**: SmartAgriFood2, FInish, FRACTALS (~17 M€) - 125 apps/start-ups based on FIWARE/FIspace



Sep. 2016: **FIWARE Foundation** established with 3 verticals: Smart Cities, Industry and **Agri-Food**



2017-2020: **IoF2020** – The Internet of Food and Farm (30 M€) - IoT large-scale pilot for smart farming and food security



2018-2022: **SmartAgriHubs** – Connecting the dots to unleash the innovation potential for digital transformation of the European Agri-Food sector (20 M€)



Regional Dimension by: Including S3P Platform and Copa-Cogeca members in partnership
Regional Cluster teams in project design





SMART AGRI HUBS