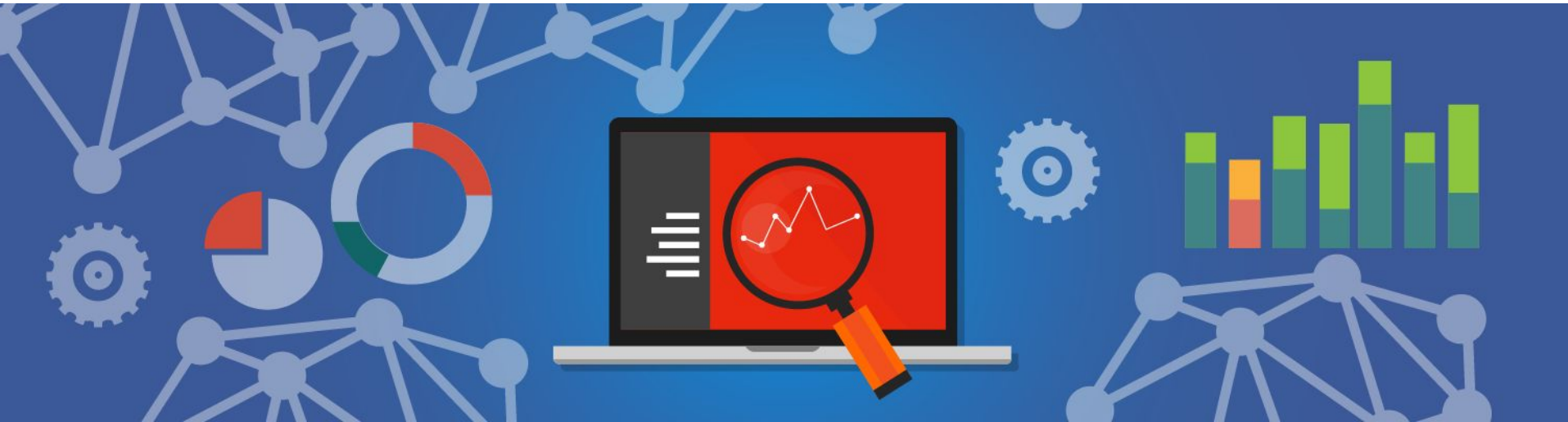




Analytics for Everyday Learning



Introduction to AFEL

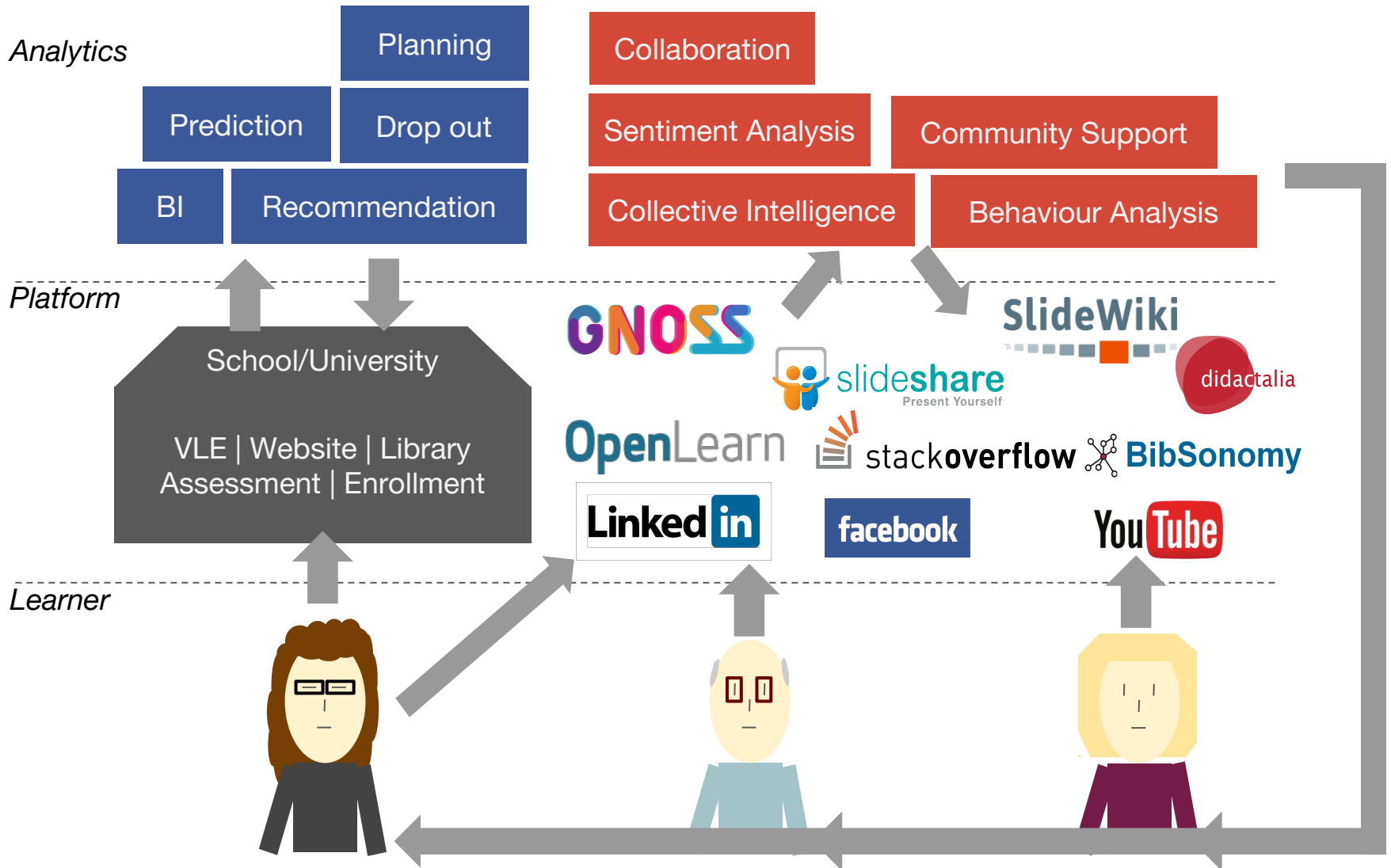
afel-project.eu - [@afelproject](https://twitter.com/afelproject)

Mathieu d'Aquin

[@mdaquin](https://twitter.com/mdaquin)



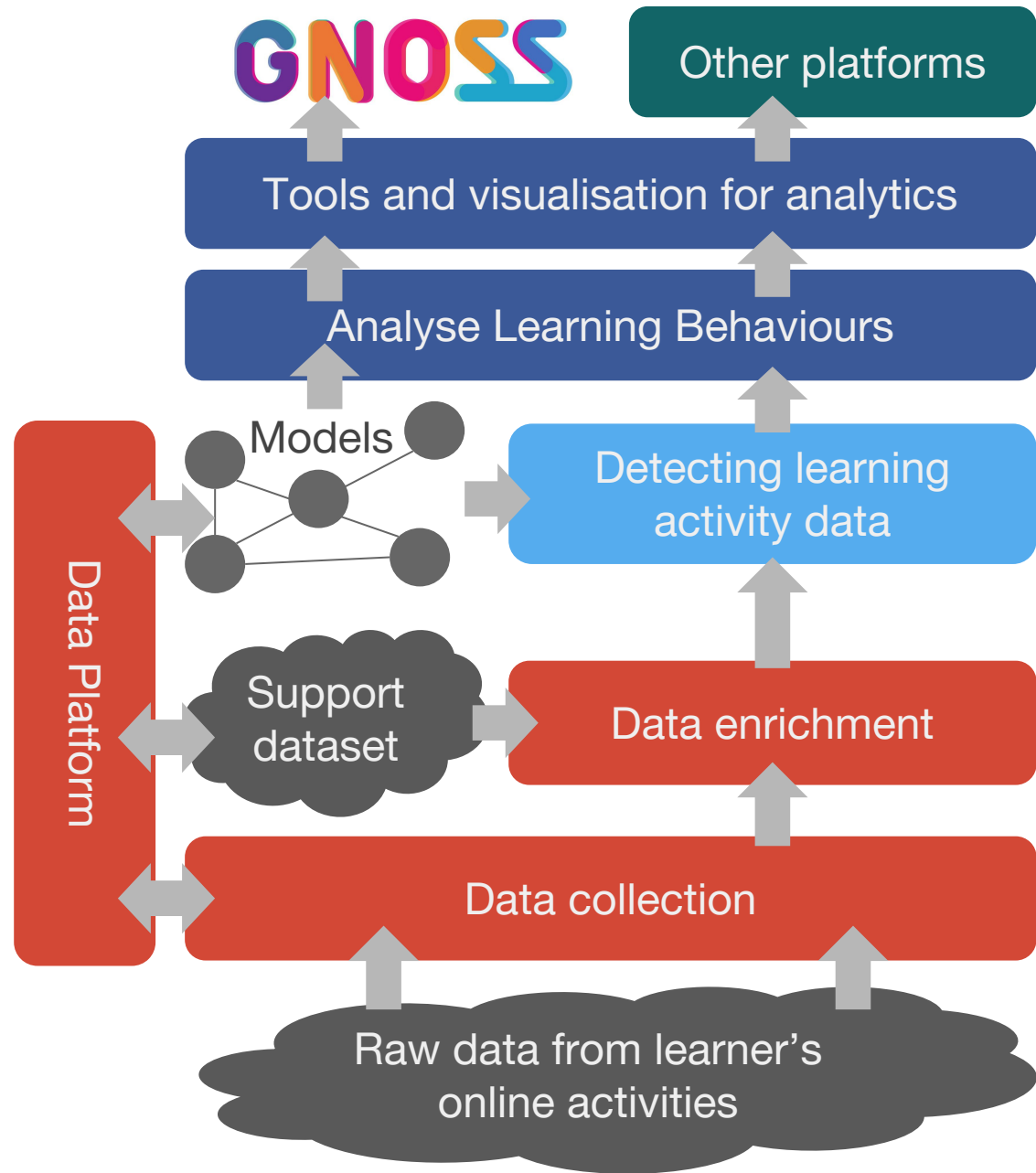
"EVERYDAY" LEARNING





Mostly a “bottom-up” approach, from collecting as much data as possible, to refining these data towards meaningful analytics.

Feedback loop however between analytics and the the models, and between the models and data collection.





afel-project.eu
@afelproject

playlist while assembling this presentation:

CRIPPLE BASTARDS "Your Lies in Check"; MINISTRY "Land of Rape and Honey"; CROWBAR "Odd Fellows Rest"; DEATHBOUND "Non Compos Mentis"