



European
Commission



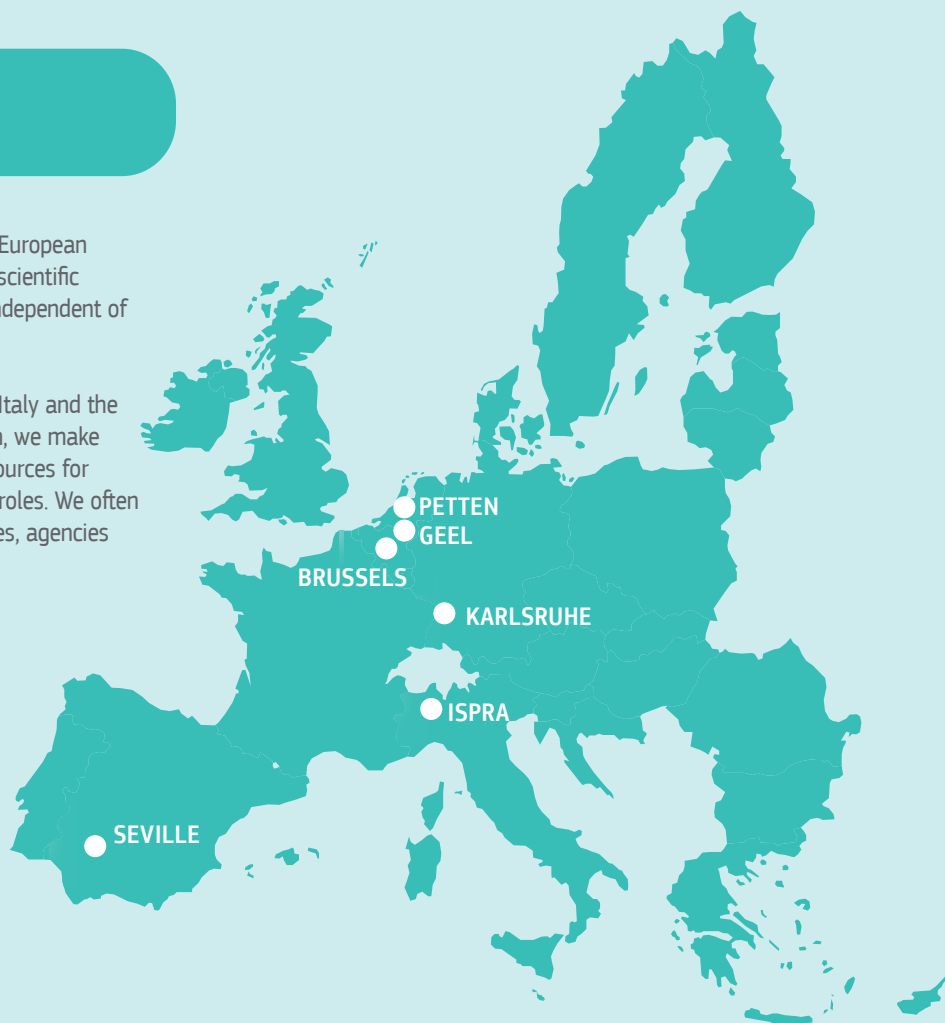
CROATIA

and its collaboration with
the European Commission's
science and knowledge service

Who are we?

The Joint Research Centre (JRC) is a department of the European Commission. Our mission is to support EU policies with scientific evidence throughout the entire policy process. We are independent of national, commercial or stakeholder interests.

Our 2 800 staff are based in Belgium, Germany, Spain, Italy and the Netherlands. In addition to performing our own research, we make sense of collective scientific knowledge from multiple sources for smarter EU policies. Capacity building is one of our key roles. We often work in partnerships with universities, government offices, agencies and stakeholders.





JRC priorities

Most of our scientific work is undertaken in direct support to EU policies. We add value by providing knowledge or services that others are less well placed to provide. And we strive for excellence in all our activities.

In carrying out our work, integrity is a core value: in our approach to science, in the way we treat people, and in avoiding conflicts of interest. We strive always to deliver on our commitments, to promote an open exchange of knowledge and to foster innovation.

Our scientific work covers a wide range of EU policy domains: energy and transport; sustainability and climate; migration; economic questions; education and employment; food, nutrition and health; digital transformation; and innovation. We endeavour to address new societal challenges as they emerge.



Examples of cooperation

→ Fighting forest fires, the high tech way

Croatia is a country at high risk of forest fires. The JRC operates the European Forest Fire Information System through which it works closely with national authorities, including those of Croatia. Forest fires are monitored by satellites allowing the JRC to produce maps outlining the extent of the blaze. Targeted efforts can then be made to fight the fires and to minimise negative effects.

→ Managing the water resources of the Sava River Basin

On water resources management, the JRC in collaboration with Croatian authorities, assessed the impact of land use change, climate change and policy measures on the Sava River Basin. Long-term policy implications for agriculture (irrigation potential), disaster risk reduction (flooding), forest management and water scarcity were outlined, taking into account predictions for water levels during floods and droughts.

→ Air quality in Zagreb

The Croatian capital, Zagreb, was included in a comparative analysis that the JRC carried out on air quality in eight major cities in the Danube region. The analysis identified measures to comply with national emissions ceilings. The cooperation also entailed training Croatian experts on air quality measurements and analysis.

Working together?



USING OUR LABS AND INFRASTRUCTURE

Since 2017 the JRC has opened up 12 of its physical research infrastructures to academia, research organisations and industry (including small and medium enterprises). Scientists will have the opportunity to work in JRC laboratories dedicated to nuclear safety and security, chemistry, life sciences, physical sciences, ICT, and 'foresight' (the branch of scientific research that explores how the future will look).



► <https://europa.eu/!Mx93Uf>

SMART SPECIALISATION

The JRC hosts the Smart Specialisation Platform, which helps European countries and regions identify which research and innovation areas to invest in. The Platform takes into account a country or region's existing strengths and upcoming challenges. We have provided science-based advice for policymakers, businesses and research institutions. And we have developed more than one hundred Smart Specialisation Strategies for various European regions and Member States, e.g. for the agri-food and energy sectors. The Platform has helped foster many partnerships both within the EU and beyond.



► <https://europa.eu/!NQ77mM>

KNOWLEDGE CENTRES AND COMPETENCE CENTRES

The JRC hosts several Commission Knowledge Centres and Competence Centres. These Centres bring together experts, stakeholders and knowledge from both within and outside the European Commission. Knowledge Centres are built around topics, while Competence Centres focus on analytical tools. Together, they inform policymakers, stakeholders and the general public about the latest scientific findings that are relevant for policy. They provide contextualised evidence, reviews, data analysis and data visualisation.



► <https://europa.eu/!DF34qN>

SUPPORT FOR STANDARDISATION

Standardisation and harmonisation promote innovation and competitiveness. They also build consumer trust and are essential for the European single market. For these reasons, more than 70 % of the JRC's projects involve work on standardisation and harmonisation. The JRC also participates in more than 160 technical committees linked to standardisation organisations. The JRC also plays a key role in the development of reference materials. The JRC carries out research to lay the scientific foundations before a standard is adopted, for example, by developing analytical methods.



► <https://europa.eu/!qT77BB>



BRIDGING THE GAP BETWEEN SCIENTISTS AND POLICYMAKERS

The JRC regularly organises or facilitates events known as 'Science meets Regions' and 'Science meets Parliaments'. At these events, scientists and policymakers are brought together to learn about each other's challenges, tackle issues specific to a given region or country, build relationships and promote a culture of evidence-based policymaking.



► <https://europa.eu/!hF73cp>

ACCESSING OUR DATABASES AND MODELS

In line with our values of openness and transparency, we grant access to the JRC's services, databases and tools, including more than 100 models.



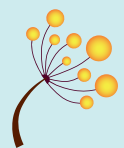
► <https://europa.eu/!nV43gg>

COLLABORATIVE DOCTORAL PARTNERSHIPS

In 2017, the JRC launched the Collaborative Doctoral Partnerships programme to work with universities to better understand what type of research is needed at different phases in the policy process. It places a special emphasis on the science-policy interface, including communication.



► <http://europa.eu/!Tu68Ft>



Did you know?



The main fields of cooperation between JRC and Croatian partners are environmental protection and monitoring; land-use and forest management; disaster risk reduction; energy and climate; nuclear safety and security; agriculture and food security.



The JRC has assisted Croatia since 2001 in the area of scientific and technological know-how underpinning EU policies, providing technical support during the pre-accession period.



The Croatian Member of the JRC Board of Governors is Zdenko Franić, of the Institute for Medical Research and Occupational Health.

If you want to know more...



SIGN UP FOR OUR NEWSLETTER

<https://ec.europa.eu/jrc/en/jrc-newsletter>



VISIT OUR WEB-SITE!

<https://ec.europa.eu/jrc/en>



EXPLORE OUR SCIENCE HUB AT

<https://ec.europa.eu/jrc/en/about/science-hub>



SEE WHICH MODELS AND DATABASES WE HAVE

<https://ec.europa.eu/jrc/en/scientific-tools>



LOOK AT OUR LATEST ANNUAL REPORT

<https://europa.eu/!Bb93uV>



READ OUR STRATEGY

https://ec.europa.eu/jrc/sites/jrcsh/files/jrc-strategy-2030_en.pdf



COME WORK WITH US

<https://ec.europa.eu/jrc/en/working-with-us/jobs>



MEET US AT AN EVENT!

<https://ec.europa.eu/jrc/en/events>

Your National Contact Points



YOU CAN ALWAYS GET MORE INFORMATION FROM YOUR JRC NATIONAL CONTACT POINTS

Find out who they are and how to reach them: <https://ec.europa.eu/jrc/en/working-with-us/jrc-national-contact-points>

