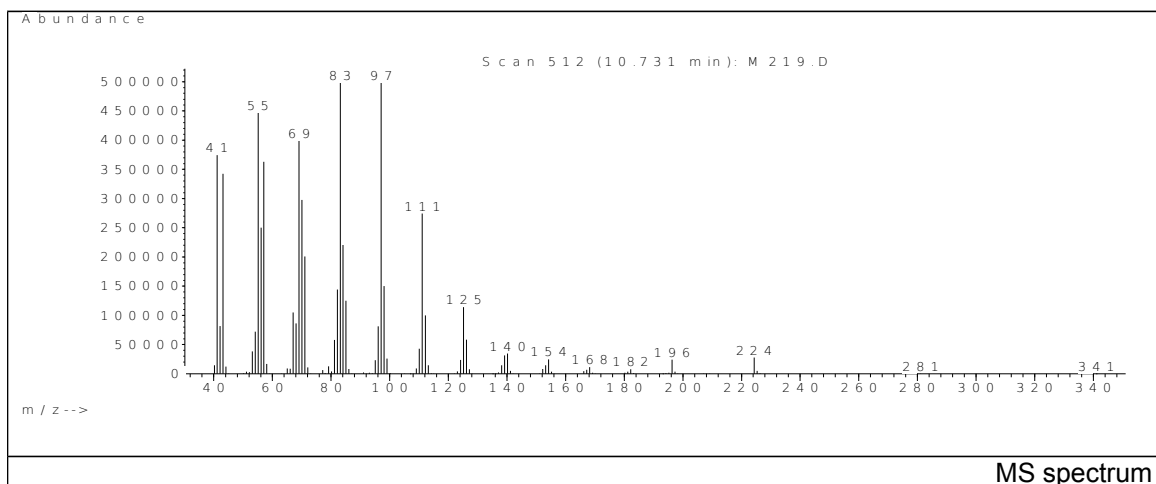
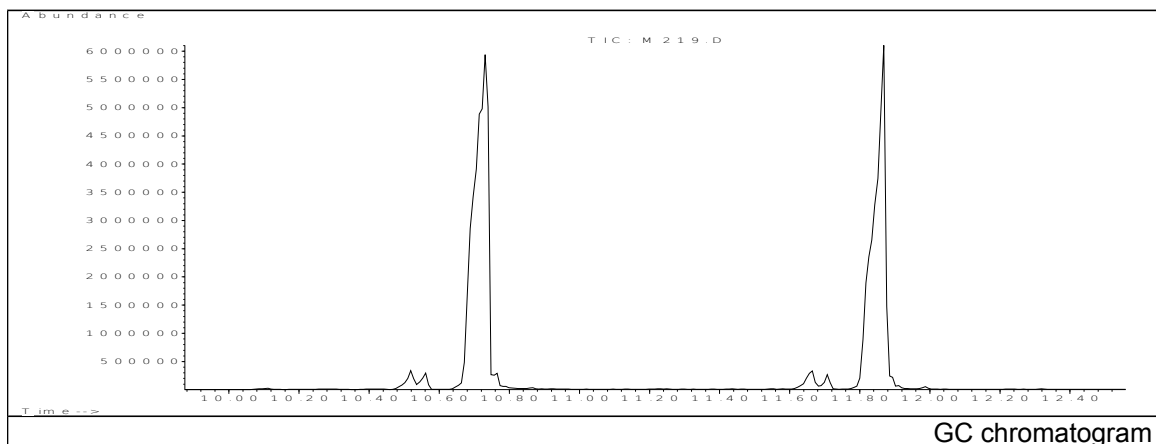


JRC CRL - FCM Database / GC-MS

Sample Name: 1-hexadecene , 1-octadecene
Solvent: Isooctane
Concentration: 100 µg/mL

Date: 15/01/2008
CAS: 068855-60-7
PM ref: - [U.R.N. M219]

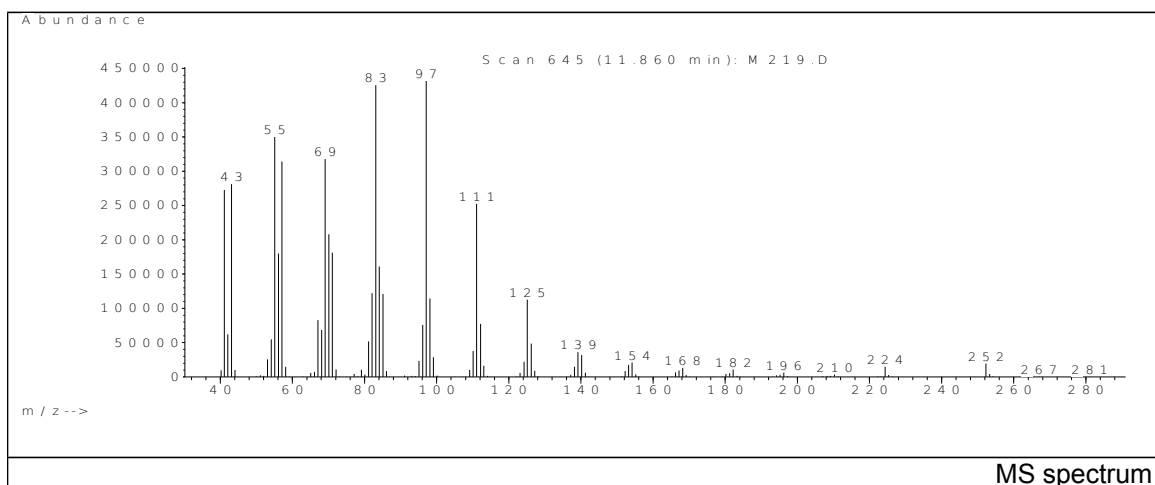


m/z	Abundance	Ion Intensity %	m/z	Abundance	Ion Intensity %
41.10	374528.0	71.73	82.10	144128.0	27.60
43.10	342400.0	65.58	83.10	512512.0	98.16
55.10	447424.0	85.70	84.10	220672.0	42.27
56.10	250240.0	47.93	85.10	125248.0	23.99
57.10	362880.0	69.50	97.10	522112.0	100.00
69.10	398784.0	76.38	98.10	149952.0	28.72
70.10	297856.0	57.05	111.10	274368.0	52.55
71.10	200960.0	38.49	125.20	114144.0	21.86

Spectrometer: HEWLETT PACKARD GC/MS 6890/5973
Inlet system: capillary GC/MS
Scan Range: 40-700 amu
Source temperature: 230°C

Flow: 1.2 mL/min
Column: HP-5MS (30 m x 0.25 mm x 0.25 µm)
Programme temperature: 55°C; (3min)
20°C/min (350°C); 20 min

JRC CRL - FCM Database / GC-MS



m/z	Abundance	Ion Intensity %	m/z	Abundance	Ion Intensity %
41.10	272512.0	60.29	82.10	122056.0	27.00
43.10	281408.0	62.25	83.10	425664.0	94.17
55.10	350784.0	77.60	84.10	160960.0	35.61
56.10	180032.0	39.83	85.10	120912.0	26.75
57.10	314176.0	69.50	97.10	452032.0	100.00
69.10	317696.0	70.28	98.10	114344.0	25.30
70.10	208064.0	46.03	111.10	252544.0	55.87
71.10	181376.0	40.12	125.10	112736.0	24.94

Spectrometer: HEWLETT PACKARD GC/MS 6890/5973
 Inlet system: capillary GC/MS
 Scan Range: 40-700 amu
 Source temperature: 230°C

Flow: 1.2 mL/min
 Column: HP-5MS (30 m x 0.25 mm x 0.25 µm)
 Programme temperature: 55°C; (3min)
 20°C/min (350°C); 20 min