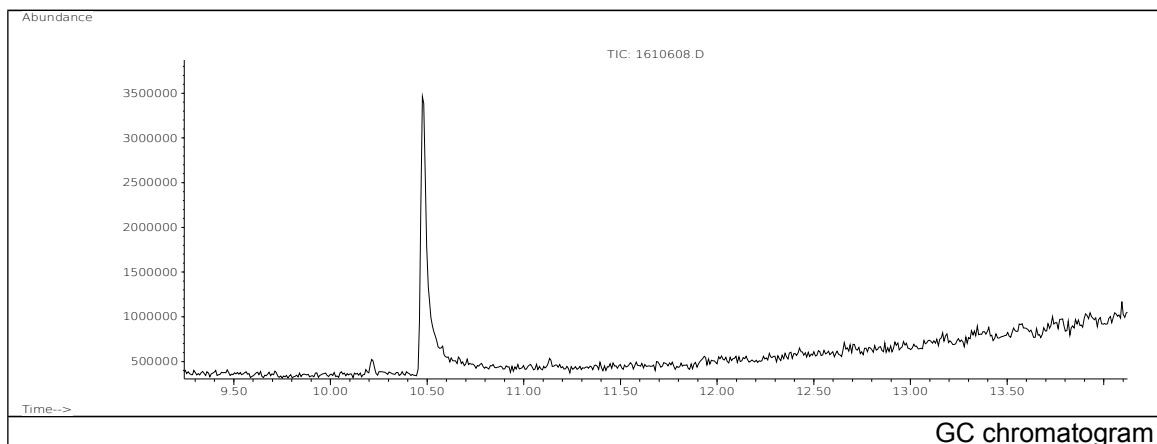


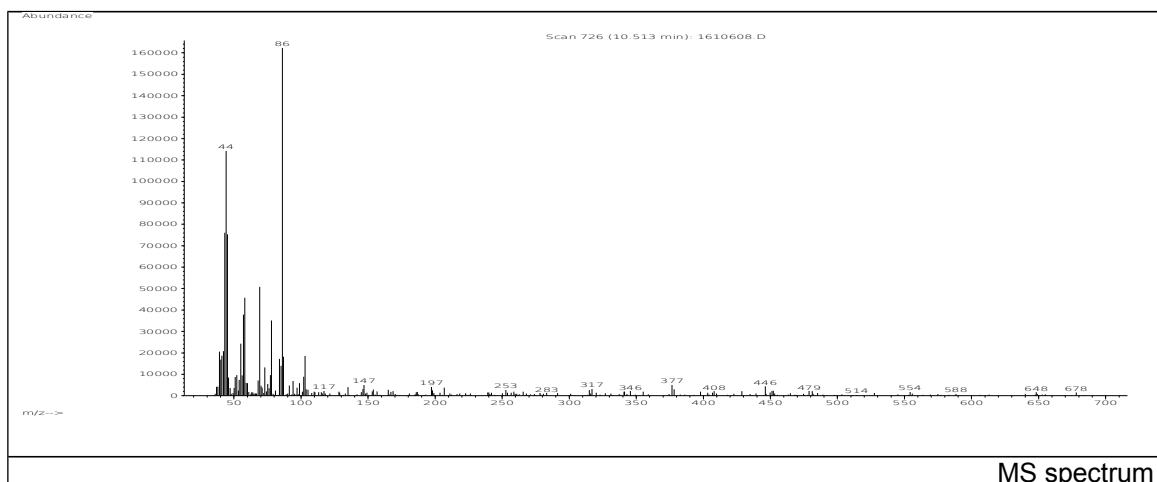
JRC CRL - FCM Database / GC-MS

Sample Name: Isosorbide
Solvent: Ethanol
Concentration: 100 µg/mL

Date: 17/01/2005
CAS: 000652-67-5
PM ref: - [U.R.N. M215]



GC chromatogram



MS spectrum

m/z	Abundance	Ion Intensity %	m/z	Abundance	Ion Intensity %
39.20	59320,0	12,45	69.10	160512,0	33,69
41.10	49416,0	10,37	73.10	40408,0	8,48
43.10	217152,0	45,58	84.10	42648,0	8,95
44.10	262400,0	55,08	85.10	61648,0	12,94
45.10	169216,0	35,52	86.10	476416,0	100,00
55.10	80256,0	16,85	87.10	37840,0	7,94
57.10	115320,0	24,21	103.10	40144,0	8,43
58.20	107152,0	22,49			

Spectrometer: HEWLETT PACKARD GC/MS 6890/5973
Inlet system: capillary GC/MS
Scan Range: 40-700 amu
Source temperature: 230 °C

Flow: 1.2 mL/min
Column: DB 17-HT (30 m x 0.25 mm x 0.15 µm)
Programme temperature: 40 °C (3 min); 20 °C/min
(350 °C); 350 °C (20 min)