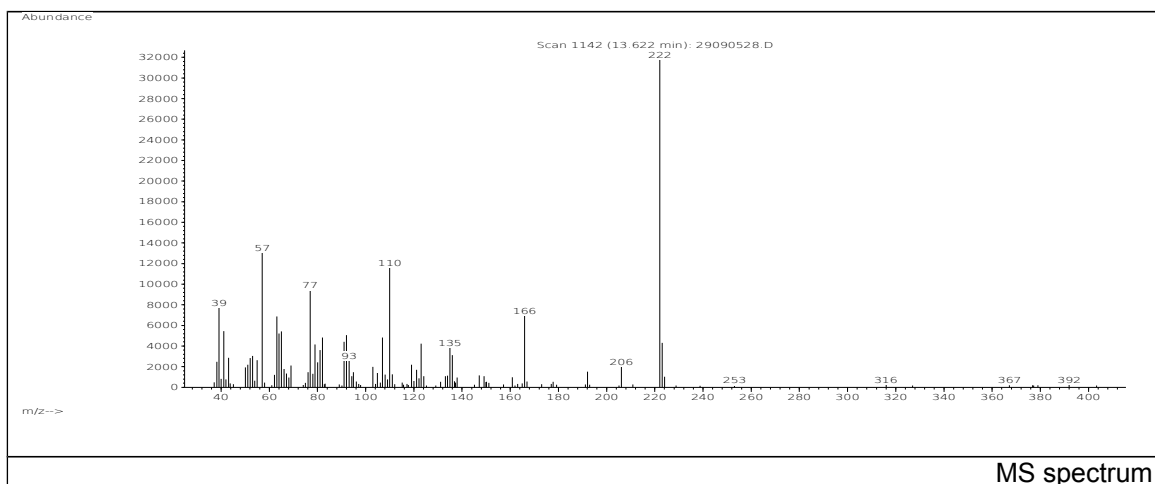
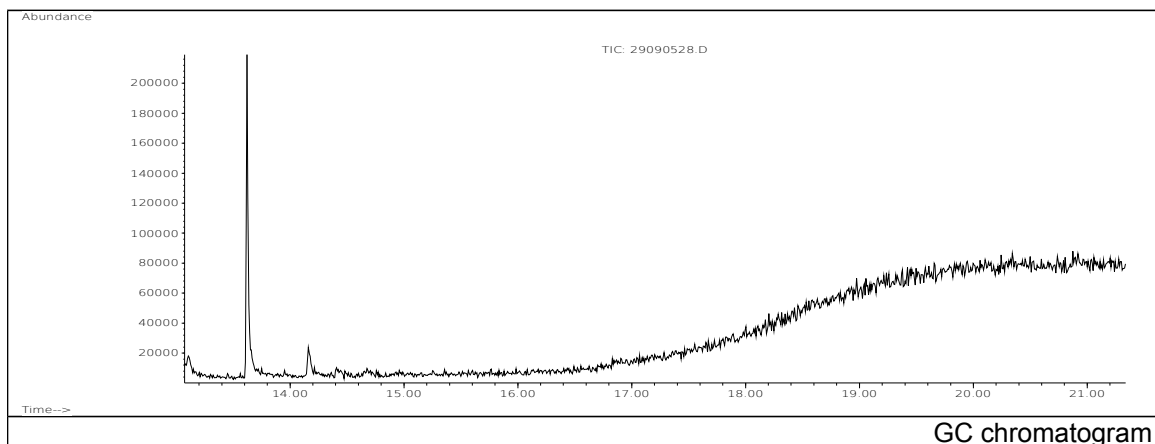


# JRC CRL - FCM Database / GC-MS

Sample Name: Resorcinol diglycidyl ether  
Solvent: Methanol  
Concentration: 100 µg/mL

Date: 29/09/2005  
CAS: 000101-90-6  
PM ref: 24073 [U.R.N. M187]



m/z	Abundance	Ion Intensity %	m/z	Abundance	Ion Intensity %
39.10	7749,0	23,71	91.00	4423,0	13,53
41.10	5447,0	16,67	92.00	5061,0	15,49
57.10	13041,0	39,91	107.00	4821,0	14,75
63.10	6866,0	21,01	110.00	11612,0	35,53
64.00	5220,0	15,97	166.00	6940,0	21,24
65.00	5430,0	16,62	222.10	32680,0	100,00
77.00	9413,0	28,80	223.10	4305,0	13,17
82.10	4832,0	14,79			

Spectrometer: HEWLETT PACKARD GC/MS 6890/5973  
Inlet system: capillary GC/MS  
Scan Range: 40-700 amu  
Source temperature: 230 °C

Flow: 1.2 mL/min  
Column: DB 17-HT (30 m x 0.25 mm x 0.15 µm)  
Programme temperature: 40 °C (3 min); 20 °C/min  
(350 °C); 350 °C (20 min)