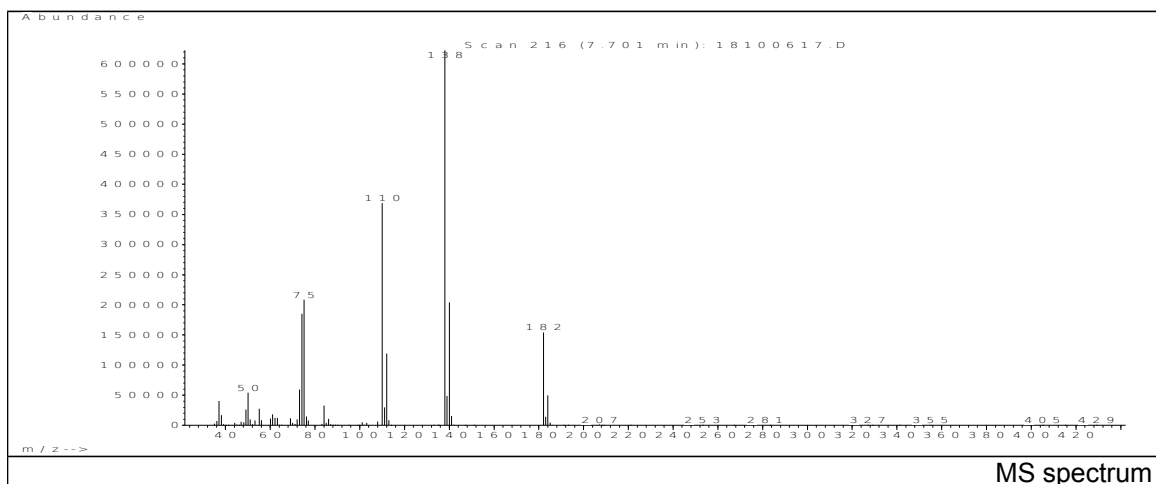
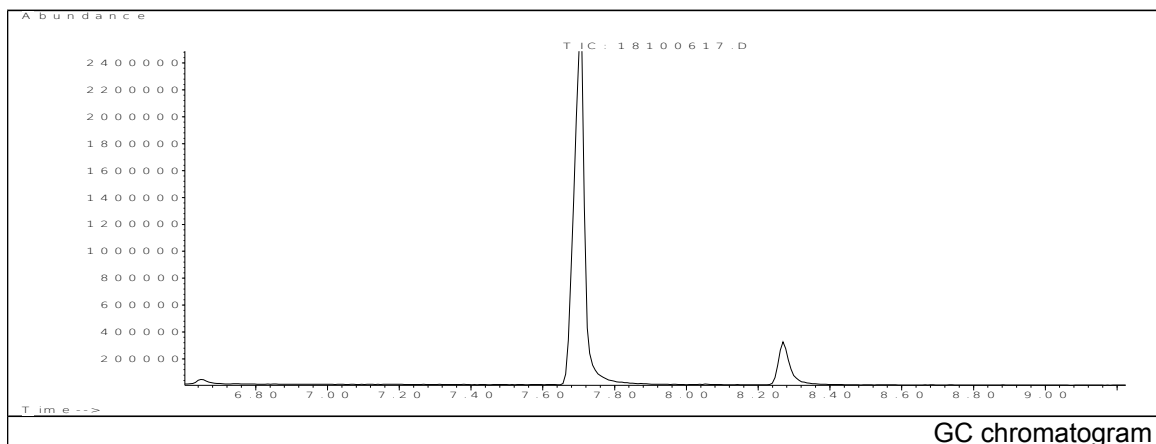


JRC CRL - FCM Database / GC-MS

Sample Name: Alkyl ether sulfate C12-14 with EO, sodium salt
Solvent: Hexane
Concentration: 100 µg/mL

Date: 26/10/2006
CAS: 068891-38-3
PM ref: - [U.R.N. M180]

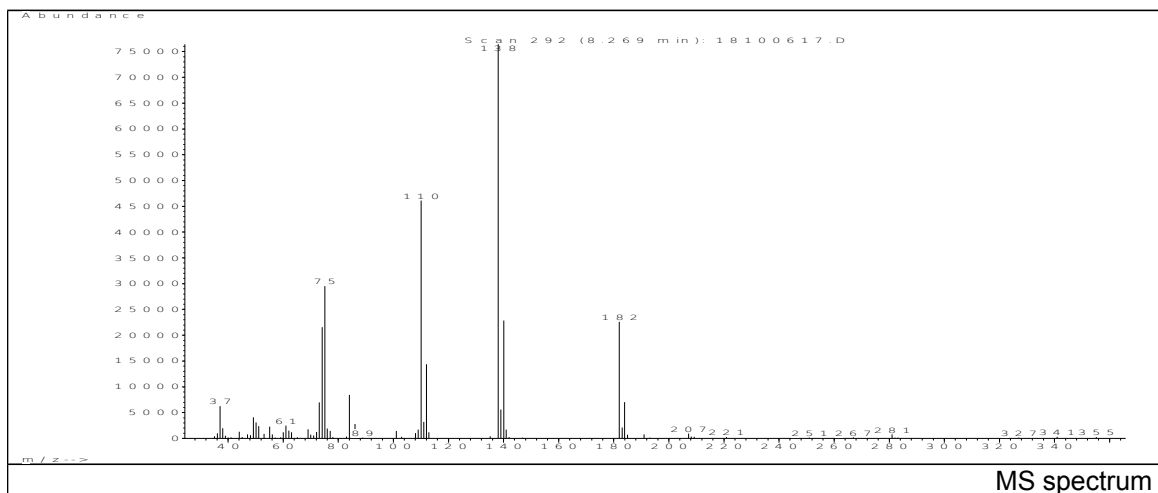


m/z	Abundance	Ion Intensity %	m/z	Abundance	Ion Intensity %
37.15	40512.0	6.51	110.05	368704.0	59.22
49.15	26240.0	4.21	111.05	29904.0	4.80
50.15	54152.0	8.70	112.05	119096.0	19.13
55.05	27704.0	4.45	138.05	622592.0	100.00
73.05	59528.0	9.56	139.05	48960.0	7.86
74.15	185280.0	29.76	140.05	203968.0	32.76
75.05	208768.0	33.53	182.05	154240.0	24.77
84.05	32968.0	5.30	184.05	49512.0	7.95

Spectrometer: HEWLETT PACKARD GC/MS 6890/5973
Inlet system: capillary GC/MS
Scan Range: 40-700 amu
Source temperature: 230°C

Flow: 1.2 mL/min
Column: HP-5MS (30 m x 0.25 mm x 0.25 µm)
Programme temperature: 60°C; 15°C/min (250°C)
10°C/min (325°C); 10 min

JRC CRL - FCM Database / GC-MS



m/z	Abundance	Ion Intensity %	m/z	Abundance	Ion Intensity %
37.15	6282.0	8.22	110.05	46120.0	60.36
49.15	4067.0	5.32	111.05	3226.0	4.22
50.15	3128.0	4.09	112.05	14393.0	18.84
73.15	7003.0	9.17	138.05	76408.0	100.00
74.15	21552.0	28.21	139.05	5607.0	7.34
75.15	29536.0	38.66	140.05	22840.0	29.89
84.05	8434.0	11.04	182.05	22584.0	29.56
86.05	2796.0	3.66	183.95	7028.0	9.20

Spectrometer: HEWLETT PACKARD GC/MS 6890/5973
 Inlet system: capillary GC/MS
 Scan Range: 40-700 amu
 Source temperature: 230°C

Flow: 1.2 mL/min
 Column: HP-5MS (30 m x 0.25 mm x 0.25 µm)
 Programme temperature: 60°C; 15°C/min (250°C)
 10°C/min (325°C); 10 min