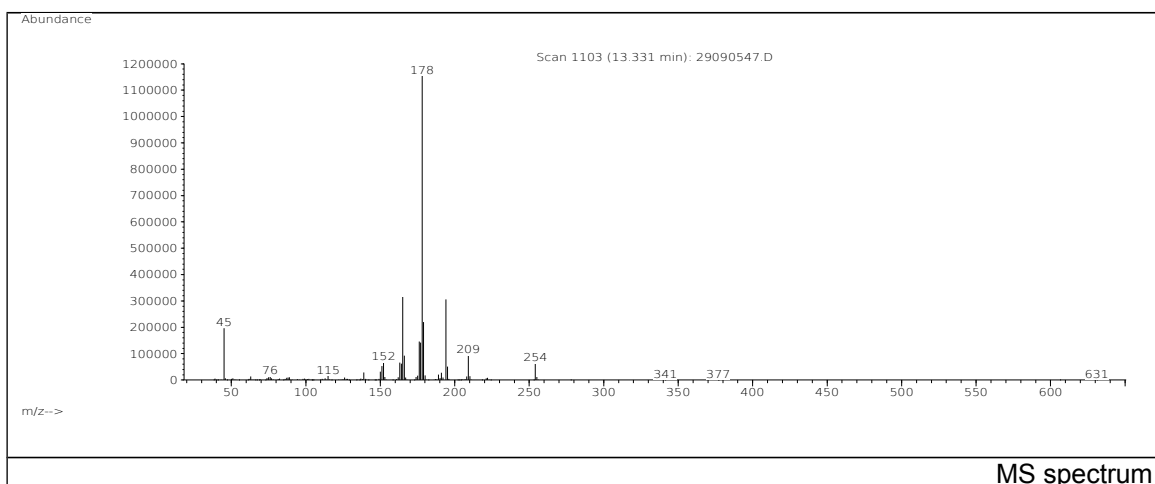
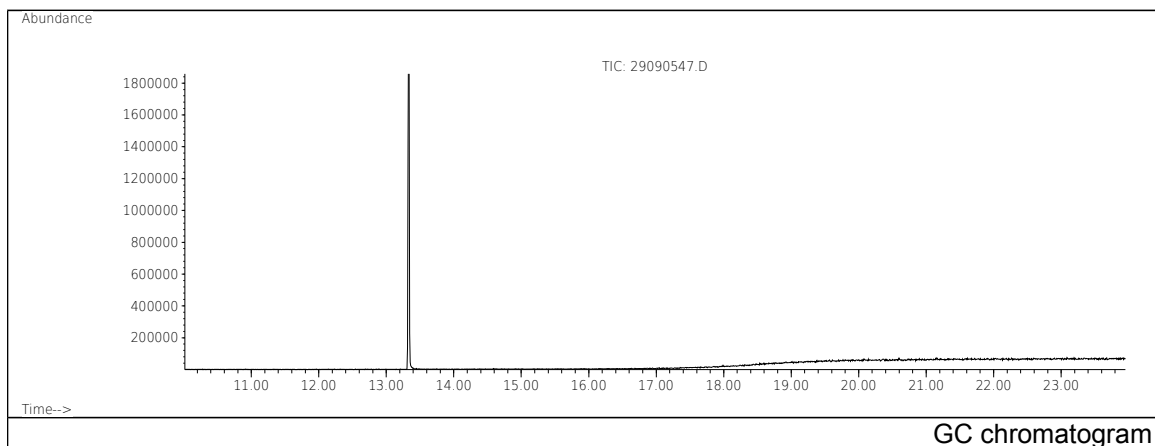


JRC CRL - FCM Database / GC-MS

Sample Name: 1,1,1-Trimethylolpropane
Solvent: Hexane
Concentration: 100 µg/mL

Date: 29/09/2005
CAS: 000077-99-6
PM ref: 25600 [U.R.N. M176]



m/z	Abundance	Ion Intensity %	m/z	Abundance	Ion Intensity %
45.10	196544,0	16,37	177.10	141824,0	11,81
151.10	53200,0	4,43	178.10	1200640,0	100,00
152.10	67288,0	5,60	179.10	219584,0	18,29
163.10	65712,0	5,47	194.10	305600,0	25,45
164.10	62176,0	5,18	195.10	51312,0	4,27
165.10	314752,0	26,22	209.10	92848,0	7,73
166.10	92280,0	7,69	254.10	60976,0	5,08
176.10	146176,0	12,17			

Spectrometer: HEWLETT PACKARD GC/MS 6890/5973
Inlet system: capillary GC/MS
Scan Range: 40-700 amu
Source temperature: 230 °C

Flow: 1.2 mL/min
Column: DB 17-HT (30 m x 0.25 mm x 0.15 µm)
Programme temperature: 40 °C (3 min); 20 °C/min
(350 °C); 350 °C (20 min)