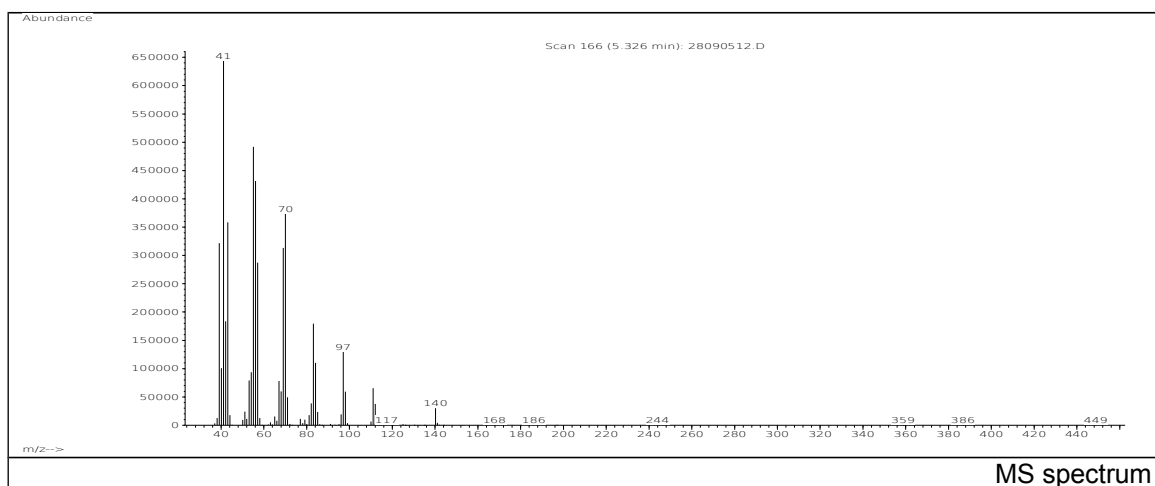
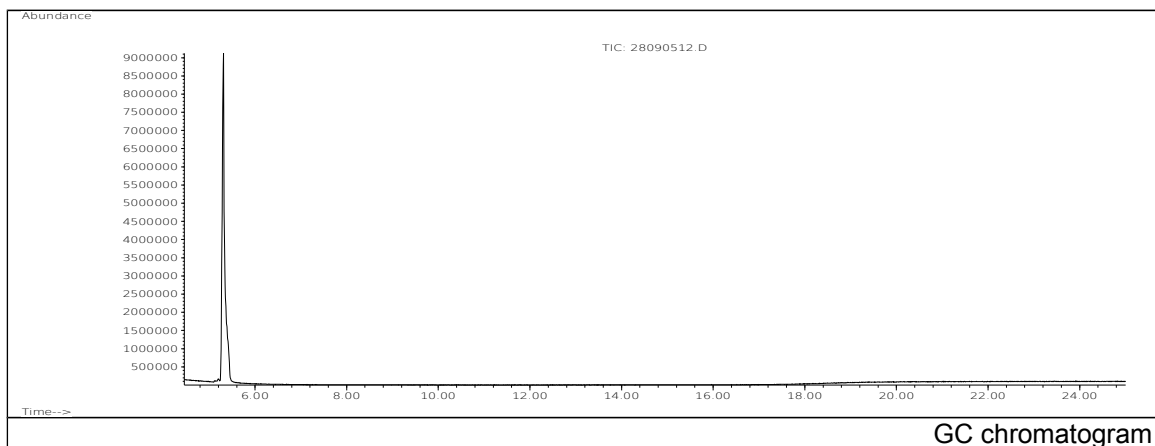


# JRC CRL - FCM Database / GC-MS

Sample Name: 1-Decene  
Solvent: Hexane  
Concentration: 100 µg/mL

Date: 28/09/2005  
CAS: 000872-05-9  
PM ref: 15130 [U.R.N. A158]



m/z	Abundance	Ion Intensity %	m/z	Abundance	Ion Intensity %
39.10	321664,0	48,65	56.10	431360,0	65,24
40.10	100960,0	15,27	57.10	287232,0	43,44
41.10	661184,0	100,00	69.10	313408,0	47,40
42.10	183808,0	27,80	70.10	373952,0	56,56
43.10	358528,0	54,23	83.10	179328,0	27,12
53.10	79296,0	11,99	84.10	110376,0	16,69
54.10	93880,0	14,20	97.10	129328,0	19,56
55.10	491840,0	74,39			

Spectrometer: HEWLETT PACKARD GC/MS 6890/5973  
Inlet system: capillary GC/MS  
Scan Range: 40-700 amu  
Source temperature: 230 °C

Flow: 1.2 mL/min  
Column: DB 17-HT (30 m x 0.25 mm x 0.15 µm)  
Programme temperature: 40 °C (3 min); 20 °C/min  
(350 °C); 350 °C (20 min)