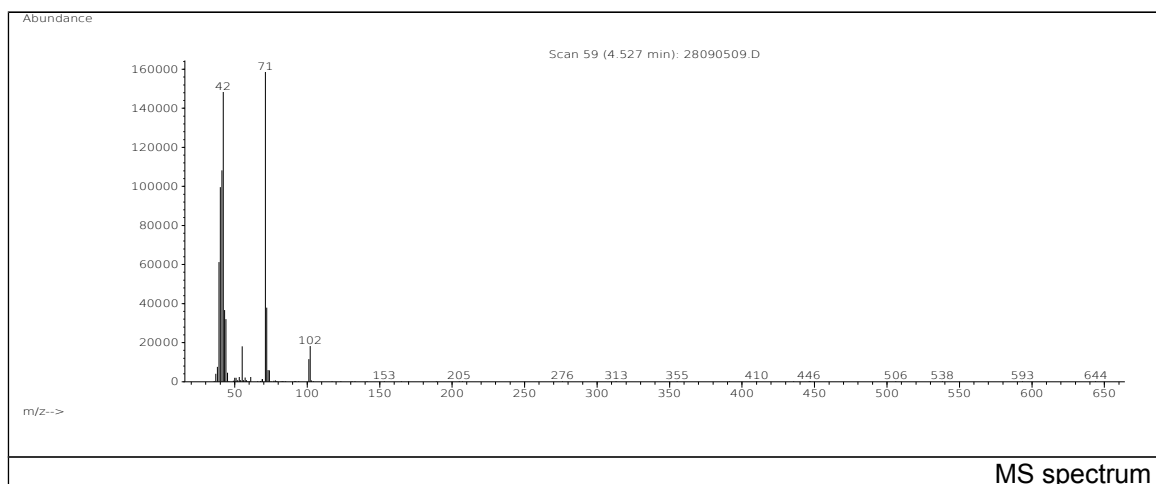
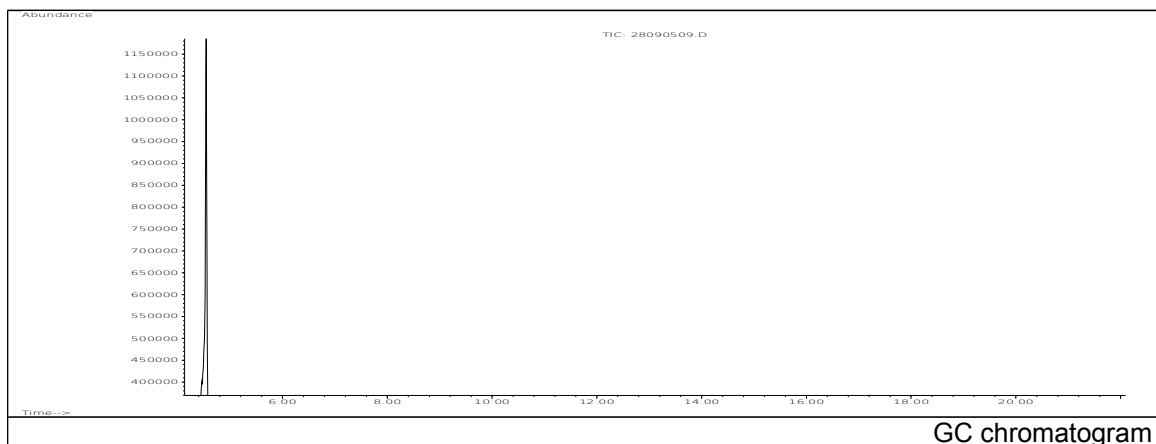


JRC CRL - FCM Database / GC-MS

Sample Name: 1,4-Butanediol formal
Solvent: Methanol
Concentration: 100 µg/mL

Date: 28/09/2005
CAS: 000505-65-7
PM ref: 13810 [U.R.N. A155]



m/z	Abundance	Ion Intensity %	m/z	Abundance	Ion Intensity %
38.10	7555,0	4,59	55.10	18032,0	10,96
39.10	61232,0	37,23	71.10	164480,0	100,00
40.00	99584,0	60,54	72.10	37888,0	23,04
41.10	108304,0	65,85	73.00	5957,0	3,62
42.10	148416,0	90,23	74.00	5839,0	3,55
43.10	36648,0	22,28	101.10	11544,0	7,02
44.00	32024,0	19,47	102.00	18288,0	11,12
45.10	4645,0	2,82			

Spectrometer: HEWLETT PACKARD GC/MS 6890/5973
Inlet system: capillary GC/MS
Scan Range: 40-700 amu
Source temperature: 230 °C

Flow: 1.2 mL/min
Column: DB 17-HT (30 m x 0.25 mm x 0.15 µm)
Programme temperature: 40 °C (3 min); 20 °C/min
(350 °C); 350 °C (20 min)