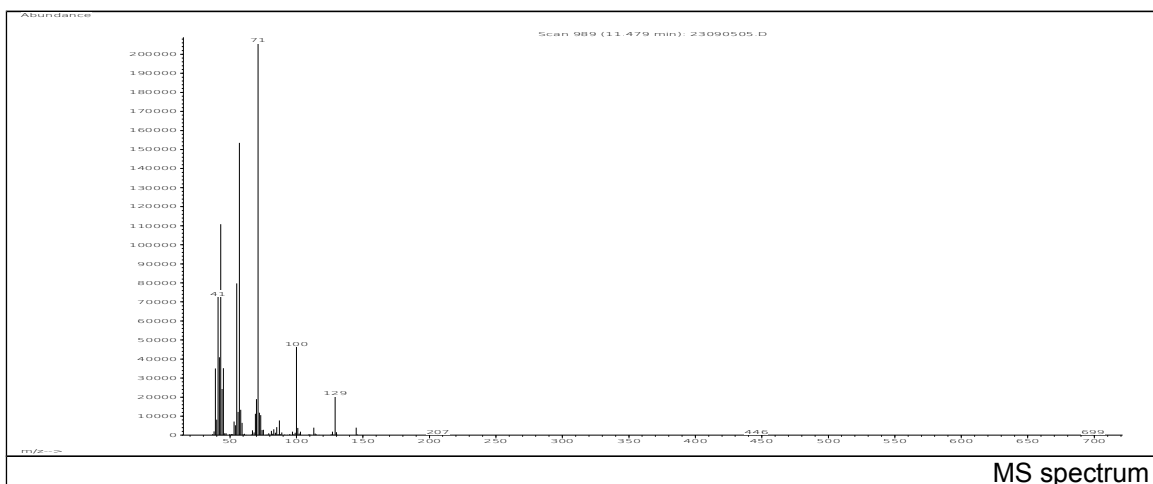
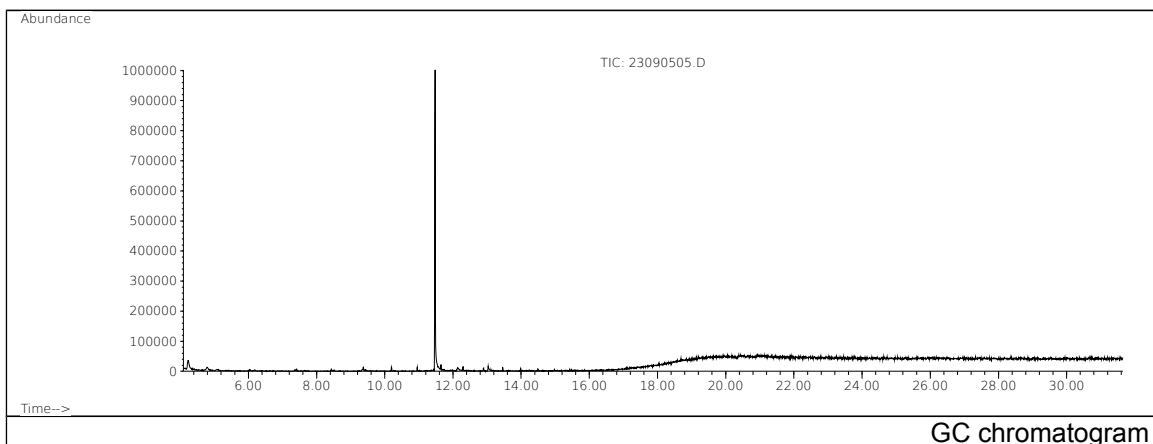


JRC CRL - FCM Database / GC-MS

Sample Name: 1,4-Butanediol-bis(2,3-epoxypropyl)ether
Solvent: Methanol
Concentration: 100 µg/mL

Date: 22/09/2005
CAS: 002425-79-8
PM ref: 13780 [U.R.N. A148]



m/z	Abundance	Ion Intensity %	m/z	Abundance	Ion Intensity %
39.10	35032,0	16,77	57.10	153536,0	73,50
41.10	72512,0	34,71	58.10	13362,0	6,40
42.10	40912,0	19,58	70.00	18904,0	9,05
43.10	110792,0	53,04	71.10	208896,0	100,00
44.10	24288,0	11,63	72.10	11853,0	5,67
45.10	35184,0	16,84	100.10	46408,0	22,22
55.10	79728,0	38,17	129.10	20344,0	9,74
56.10	12177,0	5,83			

Spectrometer: HEWLETT PACKARD GC/MS 6890/5973
Inlet system: capillary GC/MS
Scan Range: 40-700 amu
Source temperature: 230 °C

Flow: 1.2 mL/min
Column: DB 17-HT (30 m x 0.25 mm x 0.15 µm)
Programme temperature: 40 °C (3 min); 20 °C/min
(350 °C); 350 °C (20 min)