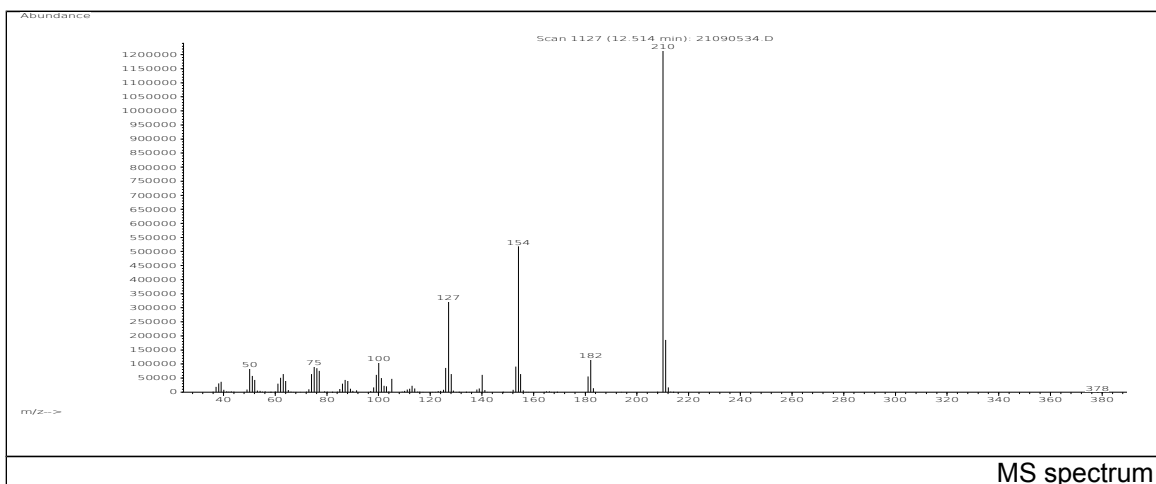
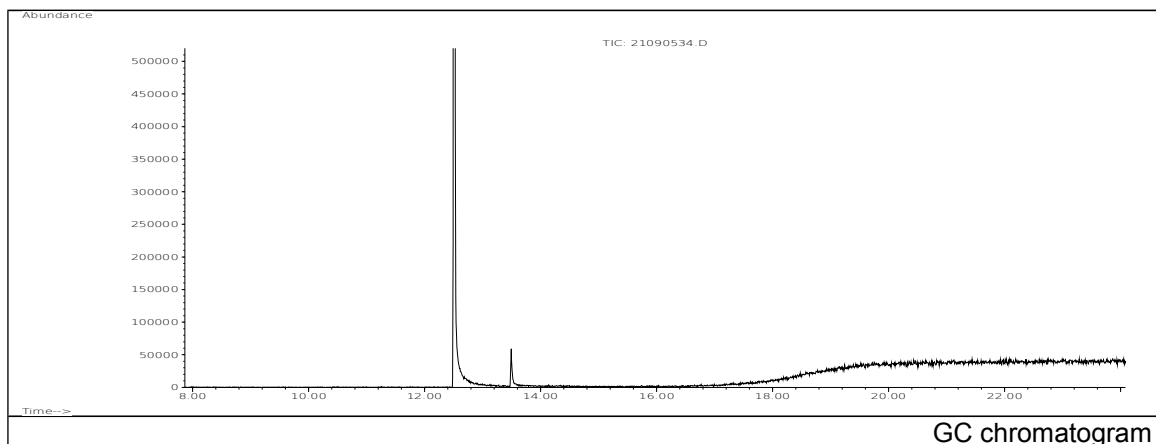


# JRC CRL - FCM Database / GC-MS

Sample Name: 1,5-Naphthalene diisocyanate  
Solvent: Hexanel  
Concentration: 100 µg/mL

Date: 21/09/2005  
CAS: 003173-72-6  
PM ref: 22420 [U.R.N. A130]



m/z	Abundance	Ion Intensity %	m/z	Abundance	Ion Intensity %
50.10	84320,0	6,79	127.10	321536,0	25,90
63.10	64496,0	5,19	153.10	91200,0	7,35
74.10	64576,0	5,20	154.10	518592,0	41,77
75.10	90968,0	7,33	155.00	64352,0	5,18
76.10	84896,0	6,84	182.10	115952,0	9,34
77.10	75424,0	6,07	210.10	1241600,0	100,00
100.10	105088,0	8,46	211.10	185344,0	14,93
126.00	86416,0	6,96			

Spectrometer: HEWLETT PACKARD GC/MS 6890/5973  
Inlet system: capillary GC/MS  
Scan Range: 40-700 amu  
Source temperature: 230 °C

Flow: 1.2 mL/min  
Column: DB 17-HT (30 m x 0.25 mm x 0.15 µm)  
Programme temperature: 40 °C (3 min); 20 °C/min  
(350 °C); 350 °C (20 min)