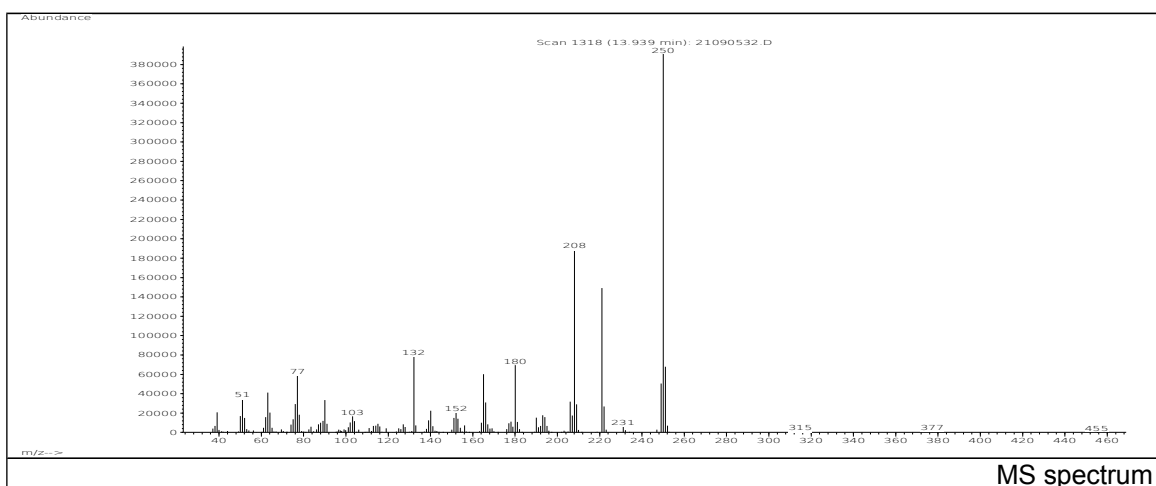
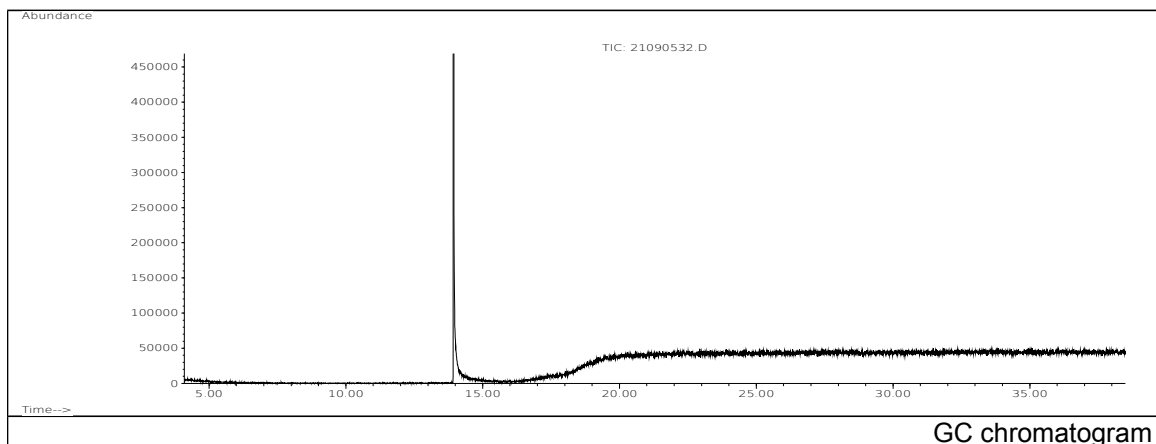


JRC CRL - FCM Database / GC-MS

Sample Name: Diphenylmethane-4,4'-diisocyanate
Solvent: Hexanel
Concentration: 100 µg/mL

Date: 21/09/2005
CAS: 000101-68-8
PM ref: 16630 [U.R.N. A127]



m/z	Abundance	Ion Intensity %	m/z	Abundance	Ion Intensity %
51.10	34424,0	8,64	180.10	69576,0	17,45
63.10	41048,0	10,30	206.10	31888,0	8,00
76.10	29264,0	7,34	208.10	188352,0	47,25
77.10	58800,0	14,75	221.10	149248,0	37,44
90.10	33552,0	8,42	249.10	50456,0	12,66
132.10	78136,0	19,60	250.10	398656,0	100,00
165.10	60192,0	15,10	251.10	68008,0	17,06
166.10	31088,0	7,80			

Spectrometer: HEWLETT PACKARD GC/MS 6890/5973
Inlet system: capillary GC/MS
Scan Range: 40-700 amu
Source temperature: 230 °C

Flow: 1.2 mL/min
Column: DB 17-HT (30 m x 0.25 mm x 0.15 µm)
Programme temperature: 40 °C (3 min); 20 °C/min
(350 °C); 350 °C (20 min)