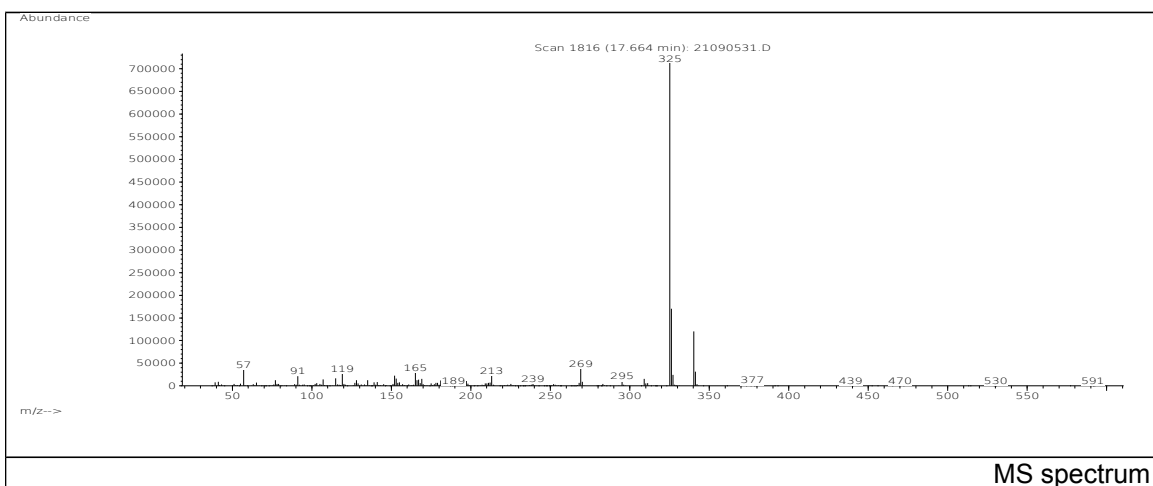
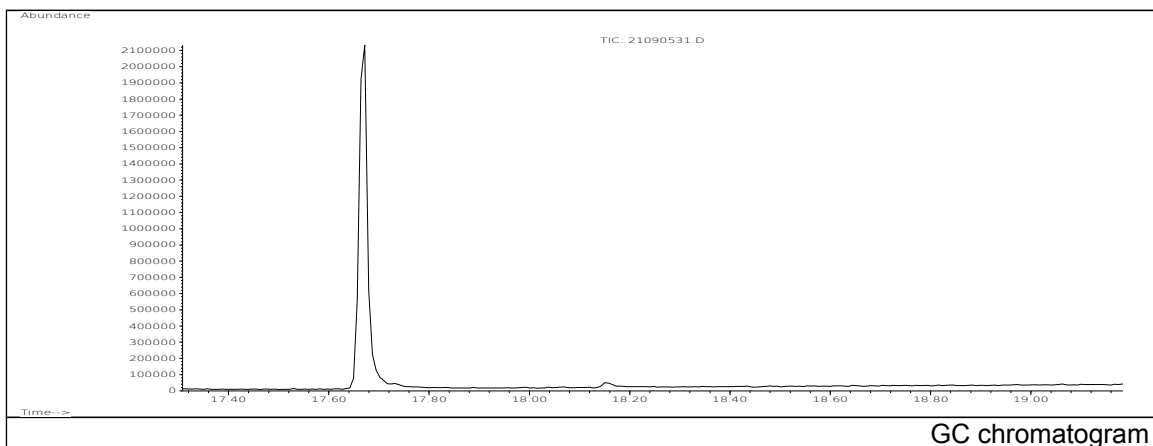


JRC CRL - FCM Database / GC-MS

Sample Name: 2,2-Bis(4-hydroxyphenyl) propane bis(2,3-epoxypropyl) ether
 Solvent: Hexanel CAS: 001675-54-3
 Concentration: 100 µg/mL PM ref: 13510 [U.R.N. A122]



m/z	Abundance	Ion Intensity %	m/z	Abundance	Ion Intensity %
57.10	35368,0	4,82	269.10	38152,0	5,20
91.10	21240,0	2,89	309.10	15766,0	2,15
115.00	16800,0	2,29	325.20	733952,0	100,00
119.10	26376,0	3,59	326.20	170432,0	23,22
152.10	22320,0	3,04	327.10	24168,0	3,29
153.10	16026,0	2,18	340.20	120376,0	16,40
165.10	29032,0	3,96	341.20	31256,0	4,26
213.10	22256,0	3,03			

Spectrometer: HEWLETT PACKARD GC/MS 6890/5973
 Inlet system: capillary GC/MS
 Scan Range: 40-700 amu
 Source temperature: 230 °C

Flow: 1.2 mL/min
 Column: DB 17-HT (30 m x 0.25 mm x 0.15 µm)
 Programme temperature: 40 °C (3 min); 20 °C/min
 (350 °C); 350 °C (20 min)