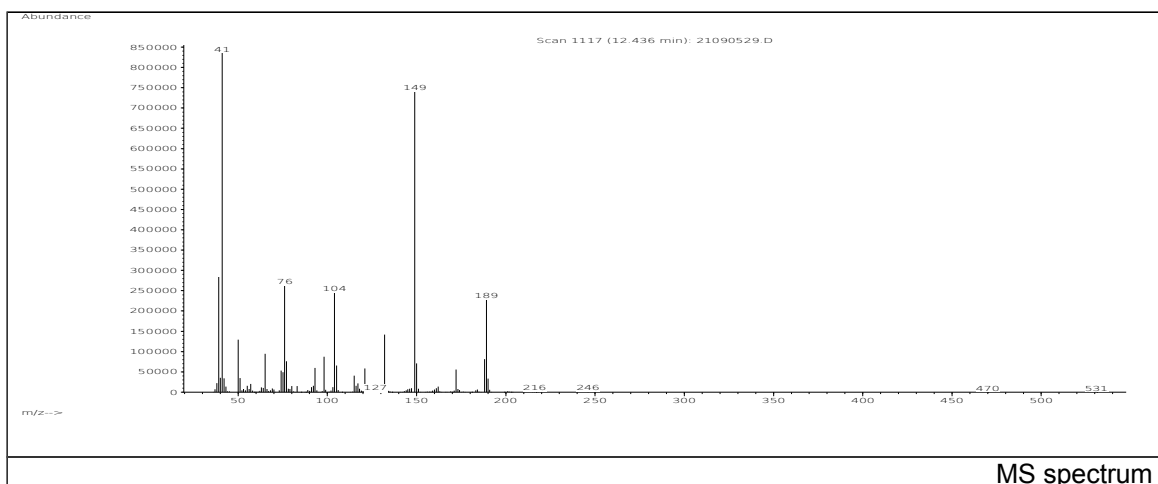
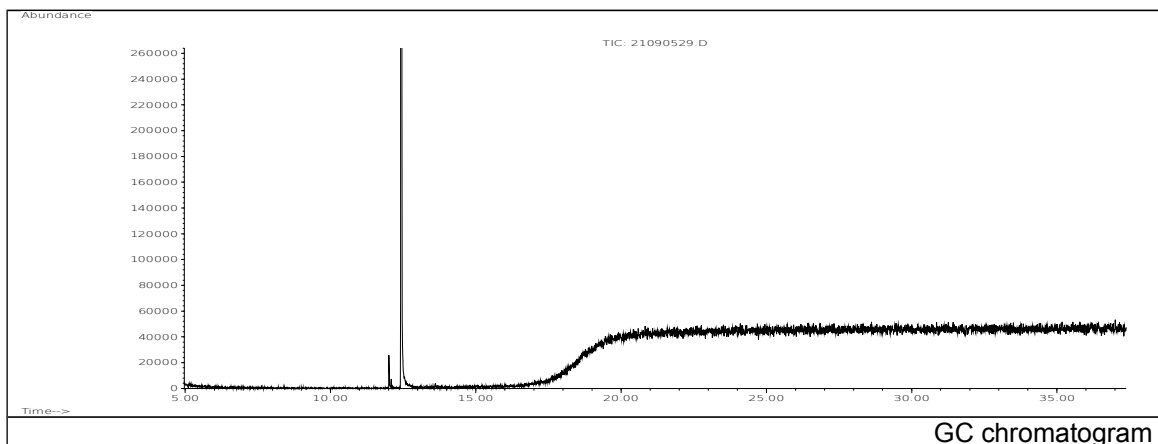


# JRC CRL - FCM Database / GC-MS

Sample Name: Phthalic acid diallyl ester  
Solvent: Hexane  
Concentration: 100 µg/mL

Date: 21/09/2005  
CAS: 000131-17-9  
PM ref: 23230 [U.R.N. A120]



m/z	Abundance	Ion Intensity %	m/z	Abundance	Ion Intensity %
39.10	412416,0	32,05	105.00	112072,0	8,71
41.10	1286656,0	100,00	132.00	249536,0	19,39
50.10	193216,0	15,02	149.00	1283072,0	99,72
65.10	148160,0	11,52	150.00	116904,0	9,09
76.10	421952,0	32,79	172.10	103736,0	8,06
77.10	120952,0	9,40	188.10	147968,0	11,50
98.10	141184,0	10,97	189.10	405504,0	31,52
104.00	394560,0	30,67			

Spectrometer: HEWLETT PACKARD GC/MS 6890/5973  
Inlet system: capillary GC/MS  
Scan Range: 40-700 amu  
Source temperature: 230 °C

Flow: 1.2 mL/min  
Column: DB 17-HT (30 m x 0.25 mm x 0.15 µm)  
Programme temperature: 40 °C (3 min); 20 °C/min  
(350 °C); 350 °C (20 min)