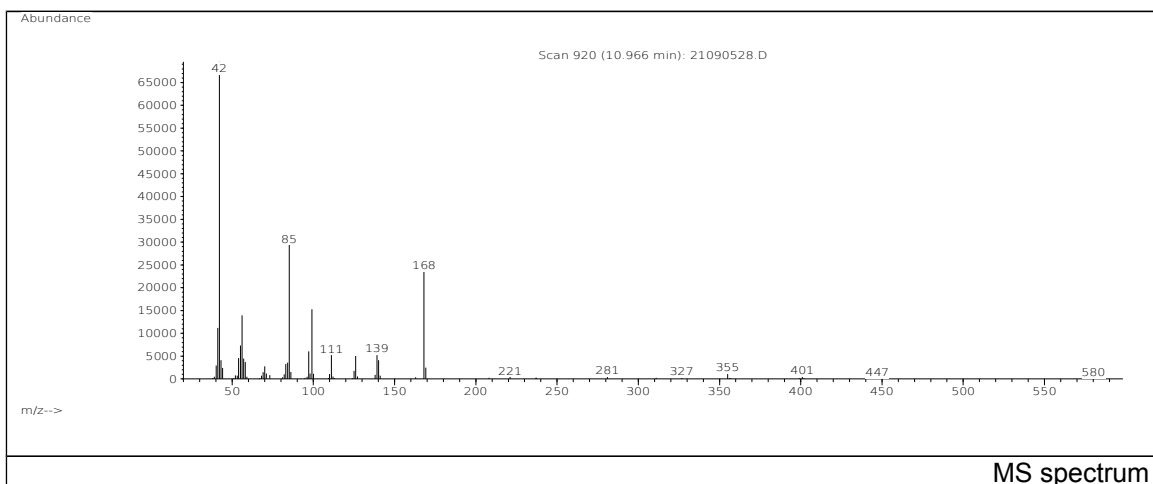
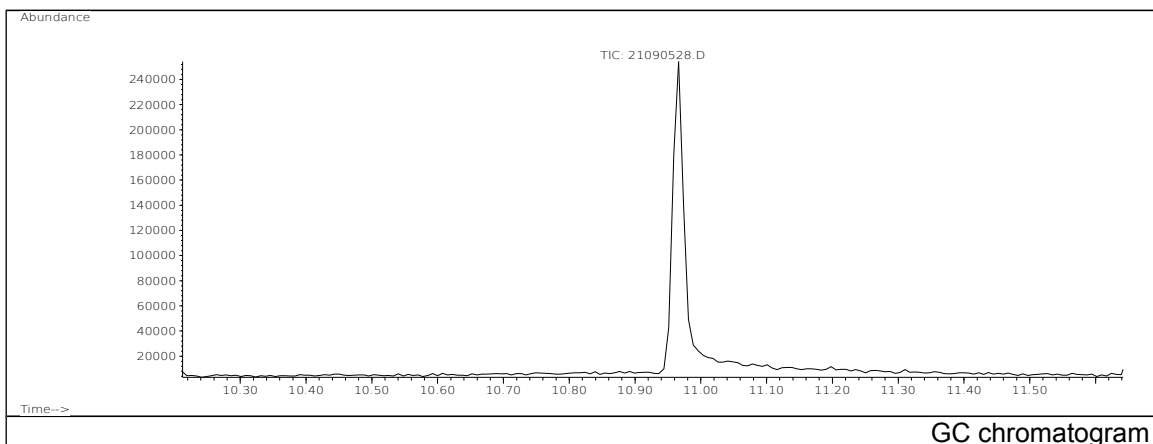


# JRC CRL - FCM Database / GC-MS

Sample Name: Ethylenediamine  
Solvent: Ethanol  
Concentration: 100 µg/mL

Date: 21/09/2005  
CAS: 000107-15-3  
PM ref: 16960 [U.R.N. A1119]



m/z	Abundance	Ion Intensity %	m/z	Abundance	Ion Intensity %
41.10	11175,0	16,07	97.10	6061,0	8,72
42.10	69528,0	100,00	99.10	15305,0	22,01
43.10	4147,0	5,96	111.10	5217,0	7,50
54.00	4584,0	6,59	126.10	5048,0	7,26
55.10	7360,0	10,59	139.10	5239,0	7,54
56.10	13915,0	20,01	140.10	4150,0	5,97
57.10	4494,0	6,46	168.10	23480,0	33,77
85.10	29368,0	42,24			

Spectrometer: HEWLETT PACKARD GC/MS 6890/5973  
Inlet system: capillary GC/MS  
Scan Range: 40-700 amu  
Source temperature: 230 °C

Flow: 1.2 mL/min  
Column: DB 17-HT (30 m x 0.25 mm x 0.15 µm)  
Programme temperature: 40 °C (3 min); 20 °C/min  
(350 °C); 350 °C (20 min)