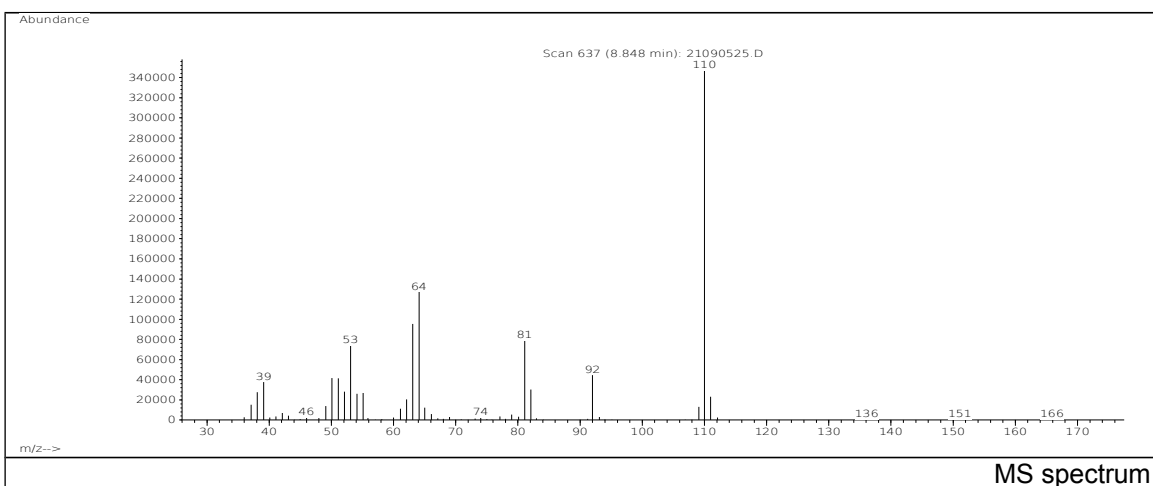
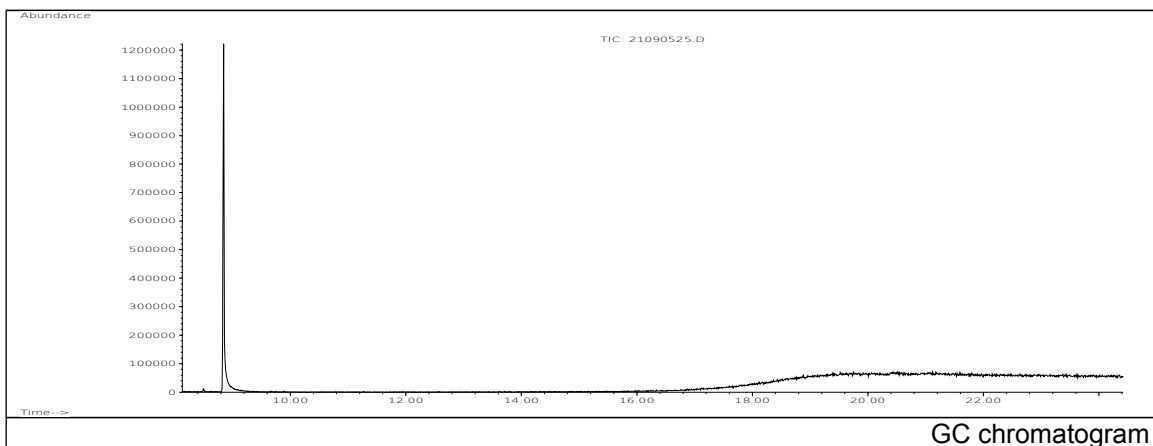


JRC CRL - FCM Database / GC-MS

Sample Name: 1,2-Dihydroxybenzene
Solvent: Ethanol
Concentration: 100 µg/mL

Date: 21/09/2005
CAS: 000120-80-9
PM ref: 15880 [U.R.N. A106]



m/z	Abundance	Ion Intensity %	m/z	Abundance	Ion Intensity %
38.10	23568,0	8,26	62.10	19776,0	6,93
39.10	33816,0	11,86	63.10	77456,0	27,16
50.10	35944,0	12,60	64.10	109864,0	38,52
51.10	37448,0	13,13	81.10	65960,0	23,13
52.10	25288,0	8,87	82.10	26920,0	9,44
53.10	59408,0	20,83	92.00	35168,0	12,33
54.10	22992,0	8,06	110.00	285184,0	100,00
55.10	24952,0	8,75			

Spectrometer: HEWLETT PACKARD GC/MS 6890/5973
Inlet system: capillary GC/MS
Scan Range: 40-700 amu
Source temperature: 230 °C

Flow: 1.2 mL/min
Column: DB 17-HT (30 m x 0.25 mm x 0.15 µm)
Programme temperature: 40 °C (3 min); 20 °C/min
(350 °C); 350 °C (20 min)