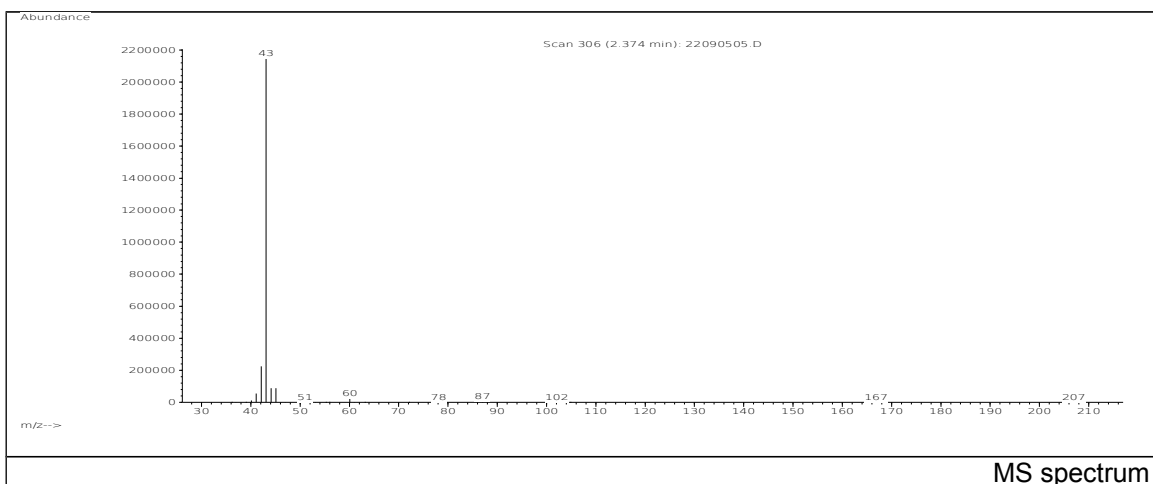
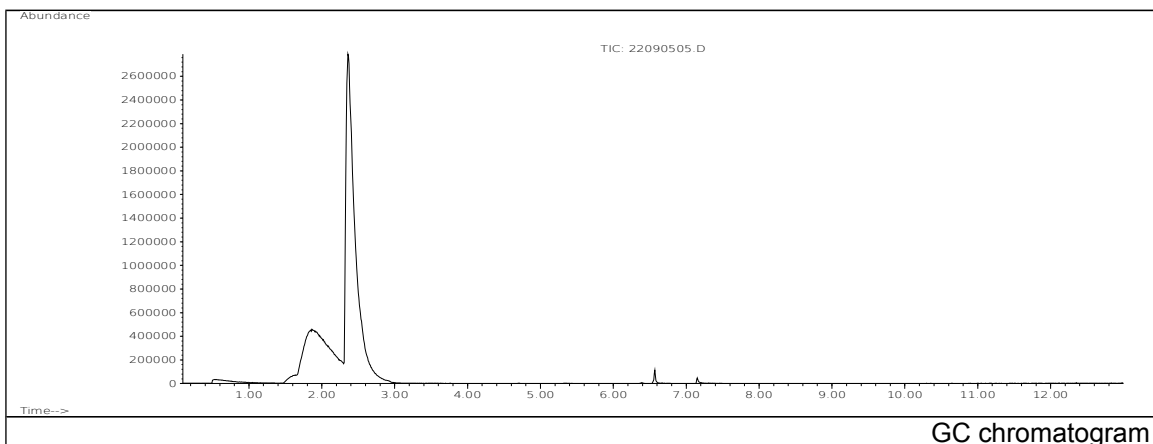


JRC CRL - FCM Database / GC-MS

Sample Name: Acetic anhydride
Solvent: Diethyl Ether
Concentration: 100 µg/mL

Date: 22/09/2005
CAS: 000108-24-7
PM ref: 10150 [U.R.N. A105]



m/z	Abundance	Ion Intensity %	m/z	Abundance	Ion Intensity %
36.90	487,0	0,02	46.00	1044,0	0,05
39.10	405,0	0,02	56.00	1833,0	0,09
40.10	9886,0	0,48	60.10	23784,0	1,16
41.10	53416,0	2,60	61.20	613,0	0,03
42.10	204608,0	9,97	87.00	5648,0	0,28
43.10	2052096,0	100,00	102.00	624,0	0,03
44.10	76464,0	3,73	207.10	569,0	0,03
45.10	85648,0	4,17			

Spectrometer: HEWLETT PACKARD GC/MS 6890/5973
Inlet system: capillary GC/MS
Scan Range: 40-700 amu
Source temperature: 230 °C

Flow: 1.2 mL/min
Column: DB 17-HT (30 m x 0.25 mm x 0.15 µm)
Programme temperature: 40 °C (3 min); 20 °C/min
(350 °C); 350 °C (20 min)