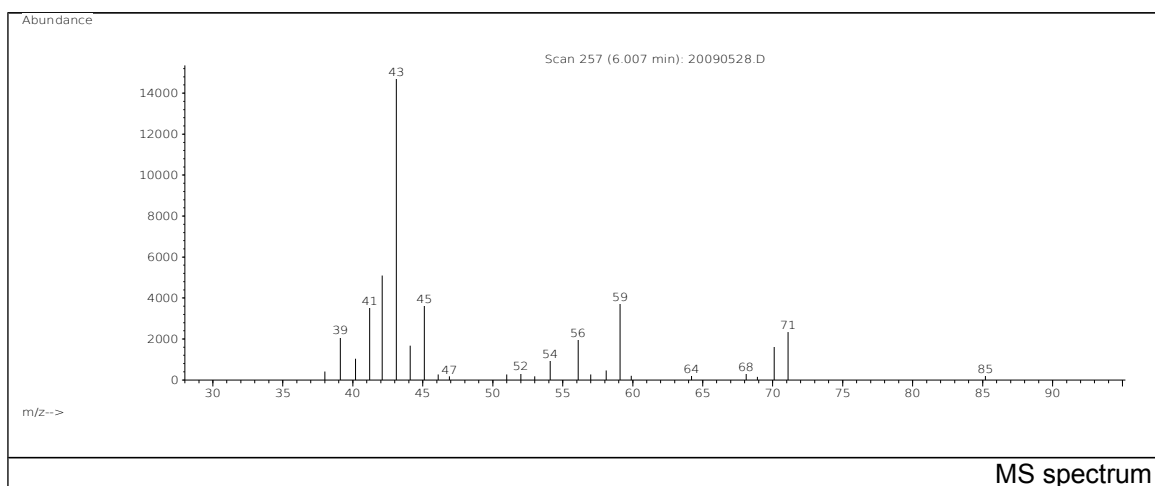
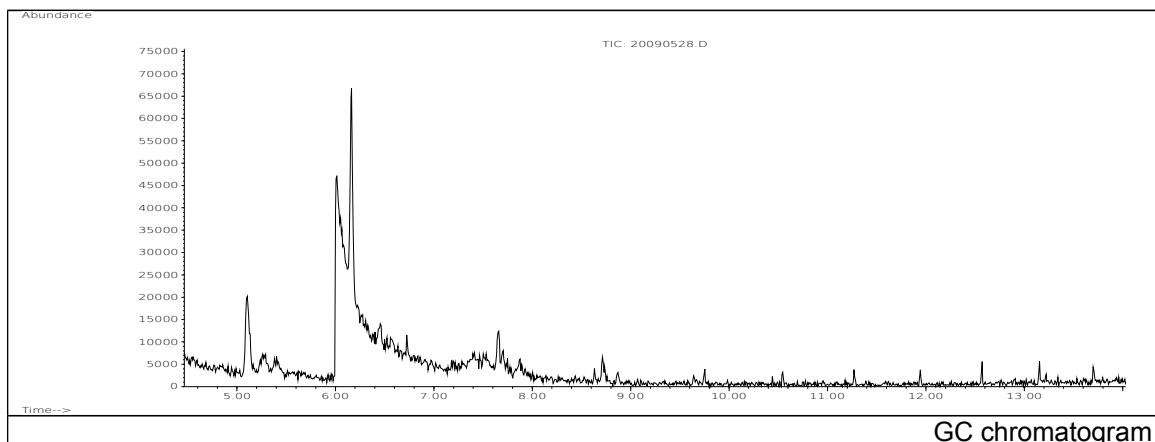


JRC CRL - FCM Database / GC-MS

Sample Name: 1,4-Diaminobutane
Solvent: Ethanol
Concentration: 100 µg/mL

Date: 20/09/2005
CAS: 000110-60-1
PM ref: 15250 [U.R.N. M090]



| m/z | Abundance | Ion Intensity % | m/z | Abundance | Ion Intensity % |
|-------|-----------|-----------------|-------|-----------|-----------------|
| 38.10 | 516,0 | 3,58 | 52.00 | 490,0 | 3,40 |
| 39.10 | 2122,0 | 14,74 | 54.10 | 977,0 | 6,78 |
| 40.00 | 956,0 | 6,64 | 56.00 | 2094,0 | 14,54 |
| 41.10 | 3829,0 | 26,59 | 58.20 | 759,0 | 5,27 |
| 42.10 | 5525,0 | 38,37 | 59.10 | 3273,0 | 22,73 |
| 43.10 | 14400,0 | 100,00 | 70.10 | 2095,0 | 14,55 |
| 44.10 | 2182,0 | 15,15 | 71.10 | 2366,0 | 16,43 |
| 45.10 | 3294,0 | 22,88 | | | |

Spectrometer: HEWLETT PACKARD GC/MS 6890/5973
Inlet system: capillary GC/MS
Scan Range: 40-700 amu
Source temperature: 230 °C

Flow: 1.2 mL/min
Column: DB 17-HT (30 m x 0.25 mm x 0.15 µm)
Programme temperature: 40 °C (3 min); 20 °C/min
(350 °C); 350 °C (20 min)