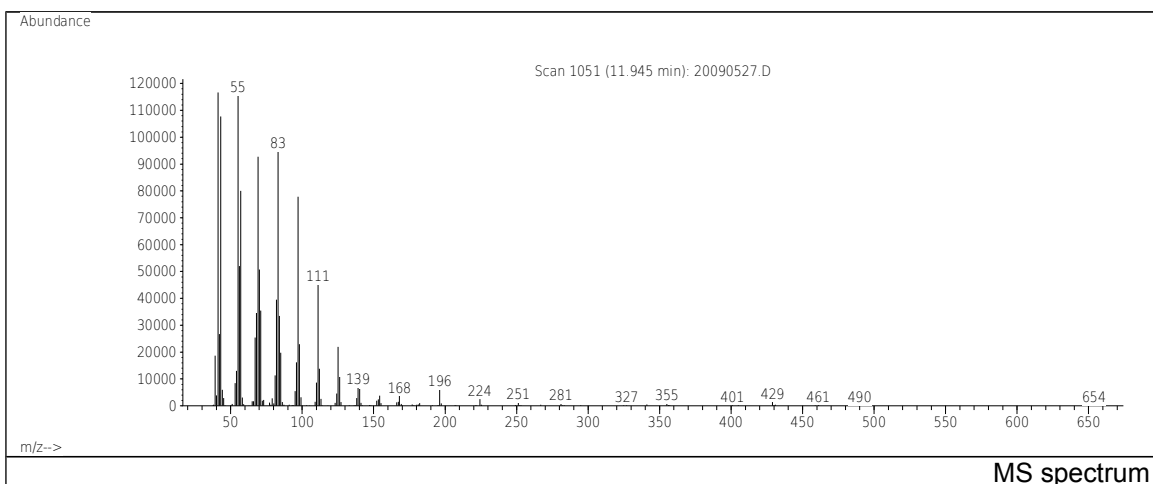
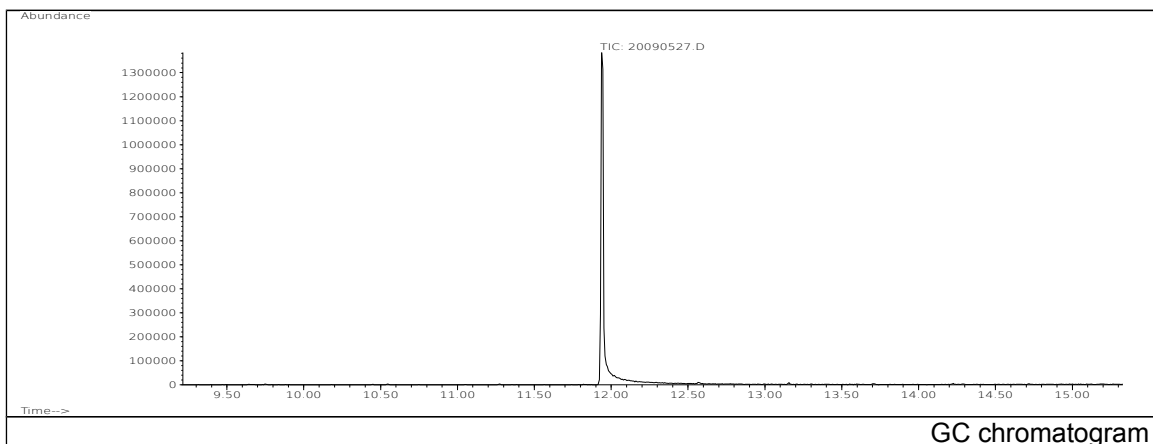


JRC CRL - FCM Database / GC-MS

Sample Name: 1-Hexadecanol
Solvent: Ethanol
Concentration: 100 µg/mL

Date: 20/09/2005
CAS: 036653-82-4
PM ref: 18310 [U.R.N. M089]



m/z	Abundance	Ion Intensity %	m/z	Abundance	Ion Intensity %
41.10	131776,0	97,81	70.10	52496,0	38,97
42.10	32288,0	23,97	71.10	36352,0	26,98
43.10	127624,0	94,73	82.10	44576,0	33,09
55.10	134720,0	100,00	83.10	99312,0	73,72
56.10	60768,0	45,11	84.10	36328,0	26,97
57.10	89568,0	66,48	97.10	76728,0	56,95
68.10	36784,0	27,30	111.10	42728,0	31,72
69.10	101672,0	75,47			

Spectrometer: HEWLETT PACKARD GC/MS 6890/5973
Inlet system: capillary GC/MS
Scan Range: 40-700 amu
Source temperature: 230 °C

Flow: 1.2 mL/min
Column: DB 17-HT (30 m x 0.25 mm x 0.15 µm)
Programme temperature: 40 °C (3 min); 20 °C/min
(350 °C); 350 °C (20 min)