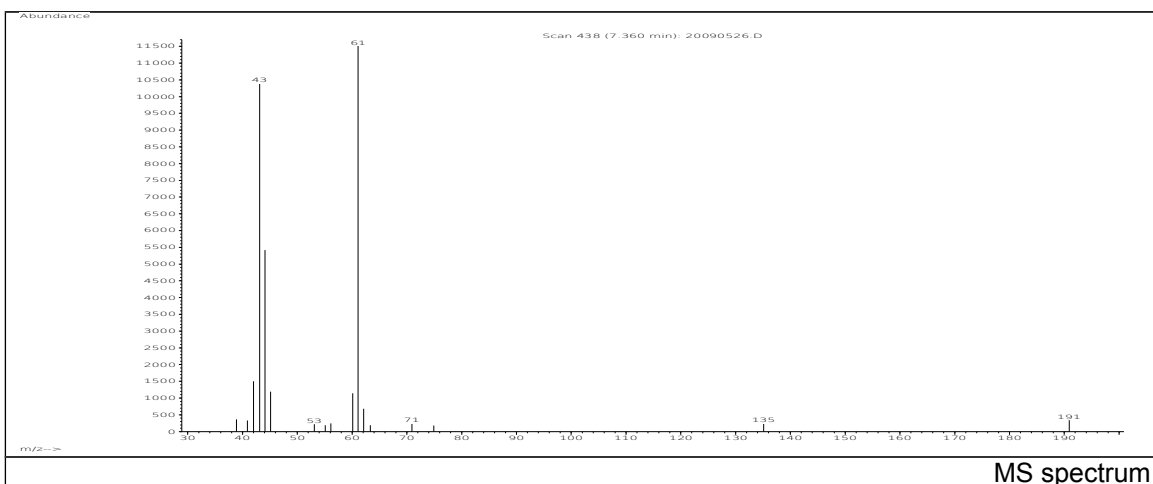
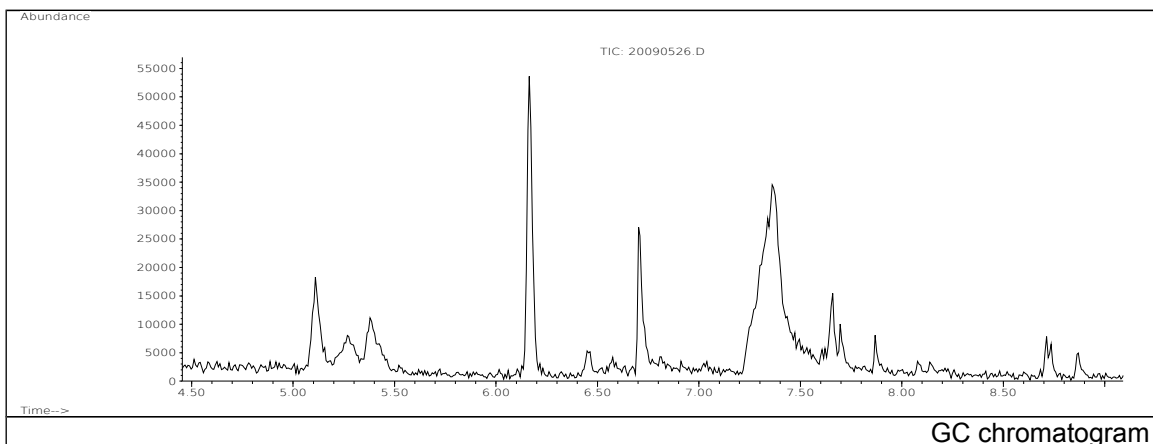


JRC CRL - FCM Database / GC-MS

Sample Name: Glycerol
Solvent: Ethanol
Concentration: 100 µg/mL

Date: 20/09/2005
CAS: 000056-81-5
PM ref: 18100 [U.R.N. M088]



| m/z | Abundance | Ion Intensity % | m/z | Abundance | Ion Intensity % |
|-------|-----------|-----------------|--------|-----------|-----------------|
| 37.00 | 269,0 | 3,05 | 54.90 | 228,0 | 2,59 |
| 38.90 | 336,0 | 3,82 | 60.00 | 1363,0 | 15,48 |
| 40.80 | 246,0 | 2,79 | 61.10 | 7960,0 | 90,39 |
| 42.10 | 1869,0 | 21,22 | 62.10 | 359,0 | 4,08 |
| 43.10 | 8806,0 | 100,00 | 103.00 | 187,0 | 2,12 |
| 44.10 | 4407,0 | 50,05 | 117.00 | 241,0 | 2,74 |
| 45.20 | 698,0 | 7,93 | 54.90 | 228,0 | 2,59 |
| 47.10 | 189,0 | 2,15 | | | |

Spectrometer: HEWLETT PACKARD GC/MS 6890/5973
Inlet system: capillary GC/MS
Scan Range: 40-700 amu
Source temperature: 230 °C

Flow: 1.2 mL/min
Column: DB 17-HT (30 m x 0.25 mm x 0.15 µm)
Programme temperature: 40 °C (3 min); 20 °C/min
(350 °C); 350 °C (20 min)