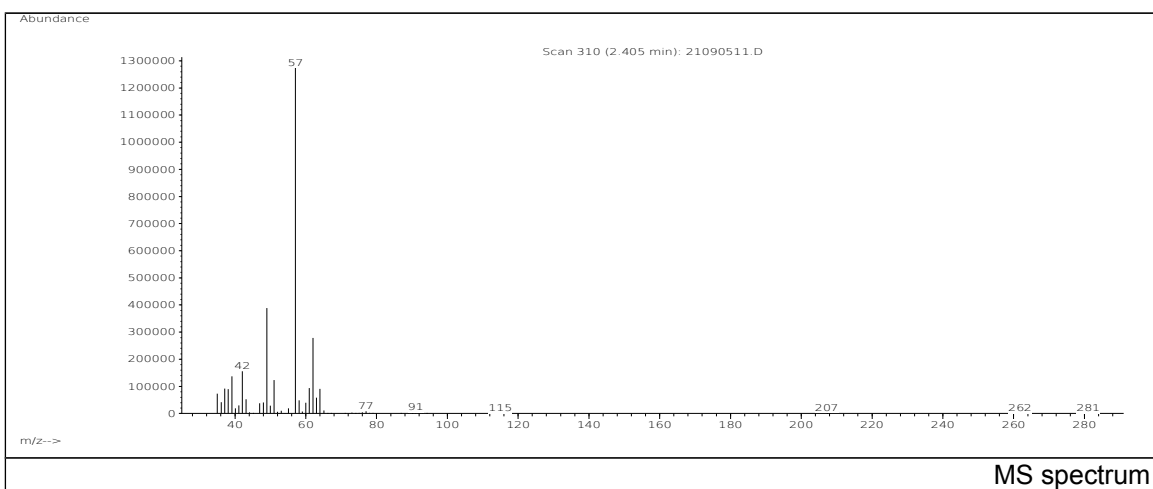
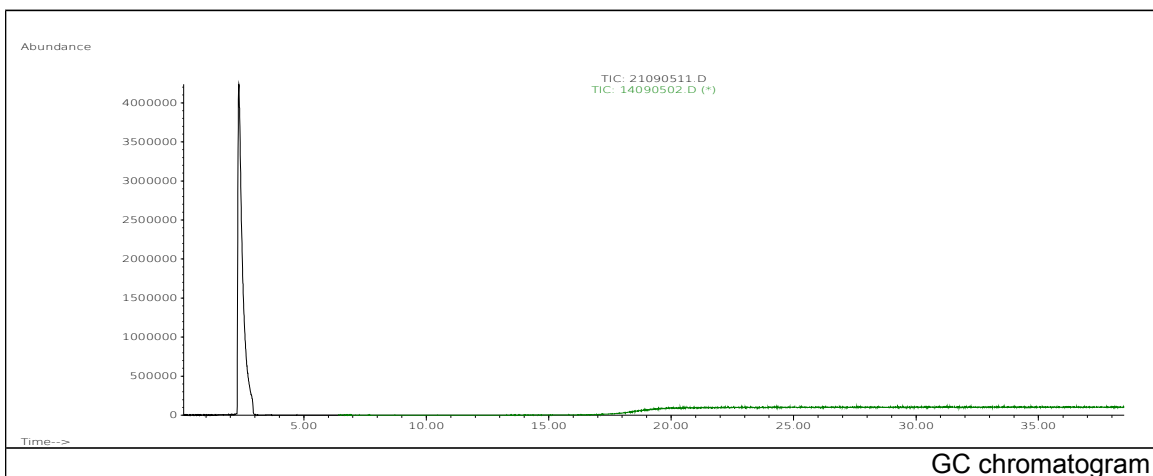


JRC CRL - FCM Database / GC-MS

Sample Name: Epichlorohydrin
Solvent: Hexane
Concentration: 100 µg/mL

Date: 21/09/2005
CAS: 000106-89-8
PM ref: 16750 [U.R.N. M085]



m/z	Abundance	Ion Intensity %	m/z	Abundance	Ion Intensity %
35.10	87368,0	5,40	51.00	156416,0	9,67
37.10	108184,0	6,69	57.10	1617408,0	100,00
38.10	106680,0	6,60	58.10	58328,0	3,61
39.10	169536,0	10,48	61.00	114832,0	7,10
42.10	198912,0	12,30	62.00	348800,0	21,57
43.10	64488,0	3,99	63.00	73560,0	4,55
48.00	53648,0	3,32	64.00	107240,0	6,63
49.10	475392,0	29,39			

Spectrometer: HEWLETT PACKARD GC/MS 6890/5973
Inlet system: capillary GC/MS
Scan Range: 40-700 amu
Source temperature: 230 °C

Flow: 1.2 mL/min
Column: DB 17-HT (30 m x 0.25 mm x 0.15 µm)
Programme temperature: 40 °C (3 min); 20 °C/min
(350 °C); 350 °C (20 min)